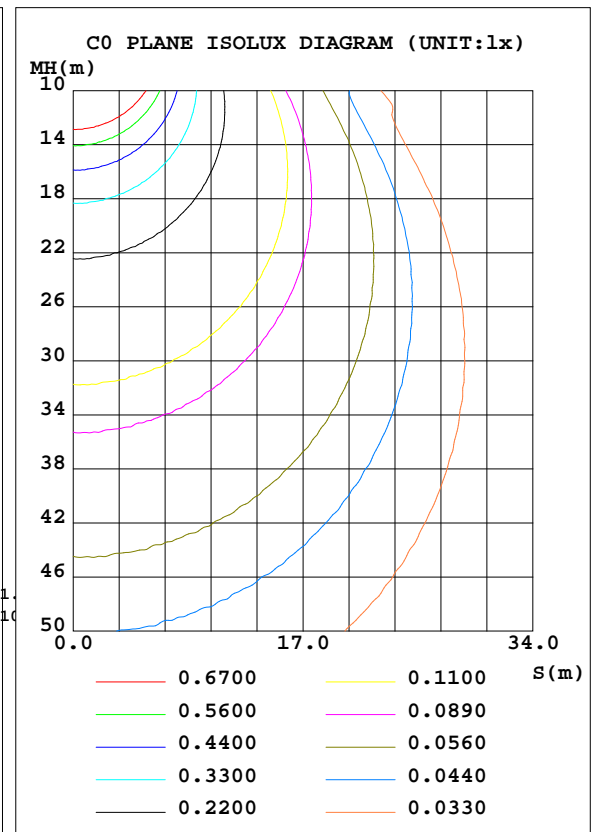
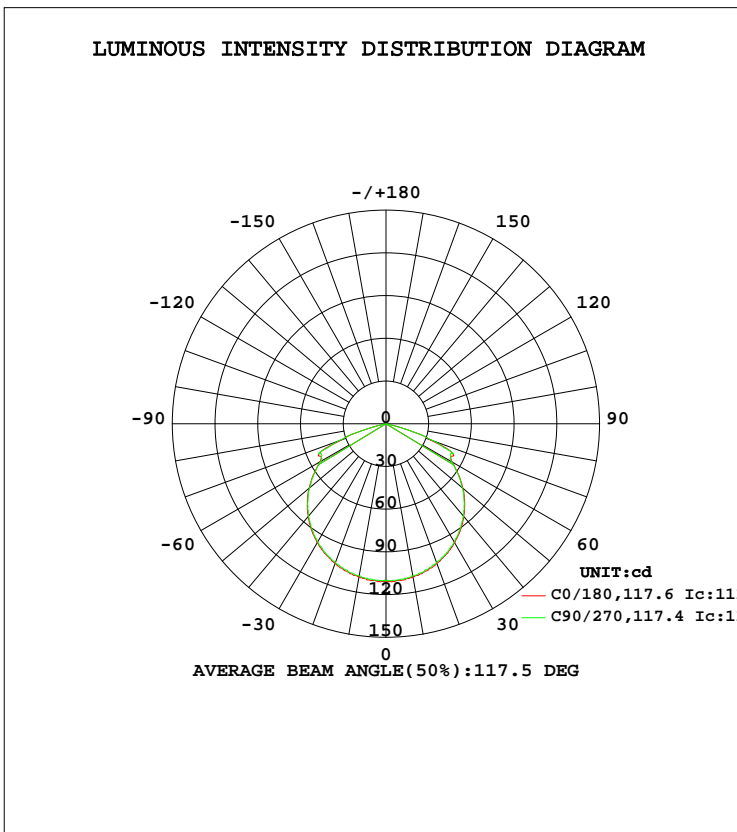


LUMINAIRE PHOTOMETRIC TEST REPORT

Test:U:3.520V I:0.7280A P:2.563W PF:1.000 Freq:0Hz Lamp Flux:321.554x1 lm		
NAME: 1	TYPE:	WEIGHT:
SPEC.:	DIM.:	SERIAL No.:
MFR.:	SUR.:	Shielding Angle:

DATA OF LAMP		PHOTOMETRIC DATA Eff: 125.48 lm/W			
MODEL	GWUF6030 GWUF6030-S GWUF6030-SR	I _{max} (cd)	111.2	S/MH(C0/180)	1.30
NOMINAL POWER(W)	2.6	LOR(%)	100.0	S/MH(C90/270)	1.29
RATED VOLTAGE(V)	3.52	TOTAL FLUX(lm)	321.55	η UP, DN(C0-180)	0.0,50.0
NOMINAL FLUX(lm)	321.554	CIE CLASS	DIRECT	η UP, DN(C180-360)	0.0,50.0
LAMPS INSIDE	1	η up(%)	0.1	CIBSE SHR NOM	1.50
TEST VOLTAGE(V)	3.52	η down(%)	99.9	CIBSE SHR MAX	1.50



C Range: 0 - 360DEG
 C Interval: 22.5DEG
 Test Speed: HIGH
 Temperature:25.1DEG
 Operators:Wilson
 Test Date:2019-06-18

γ Range: 0 - 180DEG
 γ Interval: 0.5DEG
 Test System:EVERFINE GO-R5000_V2 SYSTEM V2.0.354
 Humidity:60.5%
 Test Distance:2.718m [K=1.0000]
 Remarks: File No.: WT-F-504-3206-01-A

Checker: Near Gao

Assessor: Akin Xu

ZONAL FLUX DIAGRAM

ZONAL FLUX DIAGRAM:

γ	C0	C45	C90	C135	C180	C225	C270	C315	γ	Φ zone	Φ total	%lum, lamp
5	110.4	110.0	110.1	110.0	110.4	110.0	110.1	110.0	0- 5	2.639	2.639	0.82,0.82
10	109.2	109.1	108.6	109.1	109.2	109.1	108.6	109.1	5- 10	7.840	10.48	3.26,3.26
15	107.2	107.0	106.3	107.0	107.2	107.0	106.3	107.0	10- 15	12.81	23.29	7.24,7.24
20	104.4	104.2	103.8	104.2	104.4	104.2	103.8	104.2	15- 20	17.39	40.68	12.7,12.7
25	100.8	100.5	100.1	100.5	100.8	100.5	100.1	100.5	20- 25	21.45	62.13	19.3,19.3
30	96.53	96.19	95.76	96.19	96.53	96.19	95.76	96.19	25- 30	24.86	86.99	27.1,27.1
35	91.14	90.89	90.49	90.89	91.14	90.89	90.49	90.89	30- 35	27.50	114.5	35.6,35.6
40	85.00	84.44	84.58	84.44	85.00	84.44	84.58	84.44	35- 40	29.28	143.8	44.7,44.7
45	78.28	77.76	77.62	77.76	78.28	77.76	77.62	77.76	40- 45	30.10	173.9	54.1,54.1
50	70.38	70.29	70.12	70.29	70.38	70.29	70.12	70.29	45- 50	29.93	203.8	63.4,63.4
55	62.22	61.85	61.76	61.85	62.22	61.85	61.76	61.85	50- 55	28.73	232.5	72.3,72.3
60	53.84	53.23	53.05	53.23	53.84	53.23	53.05	53.23	55- 60	26.60	259.1	80.6,80.6
65	52.66	51.06	50.01	51.06	52.66	51.06	50.01	51.06	60- 65	25.02	284.2	88.4,88.4
70	33.54	34.06	35.42	34.06	33.54	34.06	35.42	34.06	65- 70	22.92	307.1	95.5,95.5
75	11.18	11.25	11.09	11.25	11.18	11.25	11.09	11.25	70- 75	12.66	319.7	99.4,99.4
80	0.2188	0.2145	0.2162	0.2145	0.2188	0.2145	0.2162	0.2145	75- 80	1.443	321.2	99.9,99.9
85	0.0504	0.0480	0.0542	0.0480	0.0504	0.0480	0.0542	0.0480	80- 85	0.0648	321.2	99.9,99.9
90	0.0038	0.0021	0.0018	0.0021	0.0038	0.0021	0.0018	0.0021	85- 90	0.0097	321.2	99.9,99.9
95	0.0059	0.0040	0.0027	0.0040	0.0059	0.0040	0.0027	0.0040	90- 95	0.0017	321.3	99.9,99.9
100	0.0067	0.0056	0.0057	0.0056	0.0067	0.0056	0.0057	0.0056	95-100	0.0030	321.3	99.9,99.9
105	0.0091	0.0079	0.0084	0.0079	0.0091	0.0079	0.0084	0.0079	100-105	0.0039	321.3	99.9,99.9
110	0.0124	0.0122	0.0121	0.0122	0.0124	0.0122	0.0121	0.0122	105-110	0.0054	321.3	99.9,99.9
115	0.0205	0.0180	0.0179	0.0180	0.0205	0.0180	0.0179	0.0180	110-115	0.0076	321.3	99.9,99.9
120	0.0289	0.0251	0.0258	0.0251	0.0289	0.0251	0.0258	0.0251	115-120	0.0105	321.3	99.9,99.9
125	0.0371	0.0337	0.0324	0.0337	0.0371	0.0337	0.0324	0.0337	120-125	0.0137	321.3	99.9,99.9
130	0.0468	0.0431	0.0436	0.0431	0.0468	0.0431	0.0436	0.0431	125-130	0.0170	321.3	99.9,99.9
135	0.0623	0.0605	0.0613	0.0605	0.0623	0.0605	0.0613	0.0605	130-135	0.0207	321.3	99.9,99.9
140	0.0773	0.0801	0.0809	0.0801	0.0773	0.0801	0.0809	0.0801	135-140	0.0257	321.4	99.9,99.9
145	0.0968	0.1034	0.1077	0.1034	0.0968	0.1034	0.1077	0.1034	140-145	0.0303	321.4	99.9,99.9
150	0.1178	0.1262	0.1313	0.1262	0.1178	0.1262	0.1313	0.1262	145-150	0.0336	321.4	100,100
155	0.1398	0.1492	0.1497	0.1492	0.1398	0.1492	0.1497	0.1492	150-155	0.0344	321.5	100,100
160	0.1629	0.1674	0.1673	0.1674	0.1629	0.1674	0.1673	0.1674	155-160	0.0331	321.5	100,100
165	0.1743	0.1752	0.1745	0.1752	0.1743	0.1752	0.1745	0.1752	160-165	0.0281	321.5	100,100
170	0.1793	0.1683	0.1674	0.1683	0.1793	0.1683	0.1674	0.1683	165-170	0.0206	321.5	100,100
175	0.1743	0.1642	0.1554	0.1642	0.1743	0.1642	0.1554	0.1642	170-175	0.0120	321.6	100,100
180	0.1798	0.1669	0.1530	0.1669	0.1798	0.1669	0.1530	0.1669	175-180	0.0040	321.6	100,100
DEG	LUMINOUS INTENSITY:cd									UNIT:lm		

Conical surface Flux(90deg): 173.88 lm

%lum = 54.1%
%lamp = 54.1%

Conical surface Flux(120deg): 259.13 lm

%lum = 80.6%
%lamp = 80.6%

C Range: 0 - 360DEG
C Interval: 22.5DEG
Test Speed: HIGH
Temperature:25.1DEG
Operators:Wilson
Test Date:2019-06-18

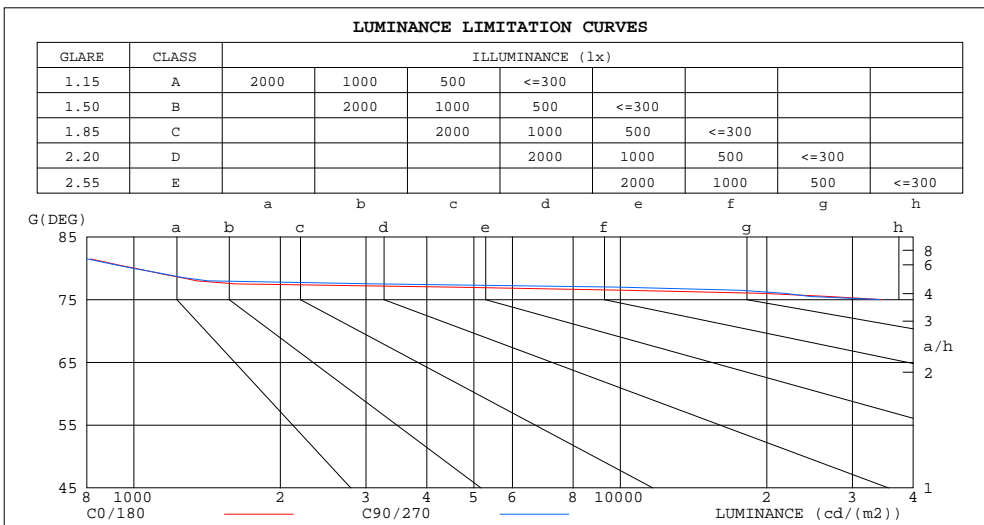
γ Range: 0 - 180DEG
γ Interval: 0.5DEG
Test System:EVERFINE GO-R5000_V2 SYSTEM V2.0.354
Humidity:60.5%
Test Distance:2.718m [K=1.0000]
Remarks: File No.: WT-F-504-3206-01-A

Checker: Near Gao

Assessor: Akin Xu

LUMINANCE LIMITATION CURVES

Test:U:3.520V I:0.7280A P:2.563W PF:1.000 Freq:0Hz Lamp Flux:321.554x1 lm		
NAME: 1	TYPE:	WEIGHT:
SPEC.:	DIM.:	SERIAL No.:
MFR.:	SUR.:	Shielding Angle:



LUMINANCE cd/(m2)		
G(DEG)	C0/180	C90/270
85	461	496
80	1005	992
75	34441	34161
70	78201	82543
65	99344	94319
60	85852	84570
55	86496	85828
50	87297	86958
45	88265	87500

C Range: 0 - 360DEG
 C Interval: 22.5DEG
 Test Speed: HIGH
 Temperature: 25.1DEG
 Operators: Wilson
 Test Date: 2019-06-18

γ Range: 0 - 180DEG
 γ Interval: 0.5DEG
 Test System: EVERFINE GO-R5000_V2 SYSTEM V2.0.354
 Humidity: 60.5%
 Test Distance: 2.718m [K=1.0000]
 Remarks: File No.: WT-F-504-3206-01-A

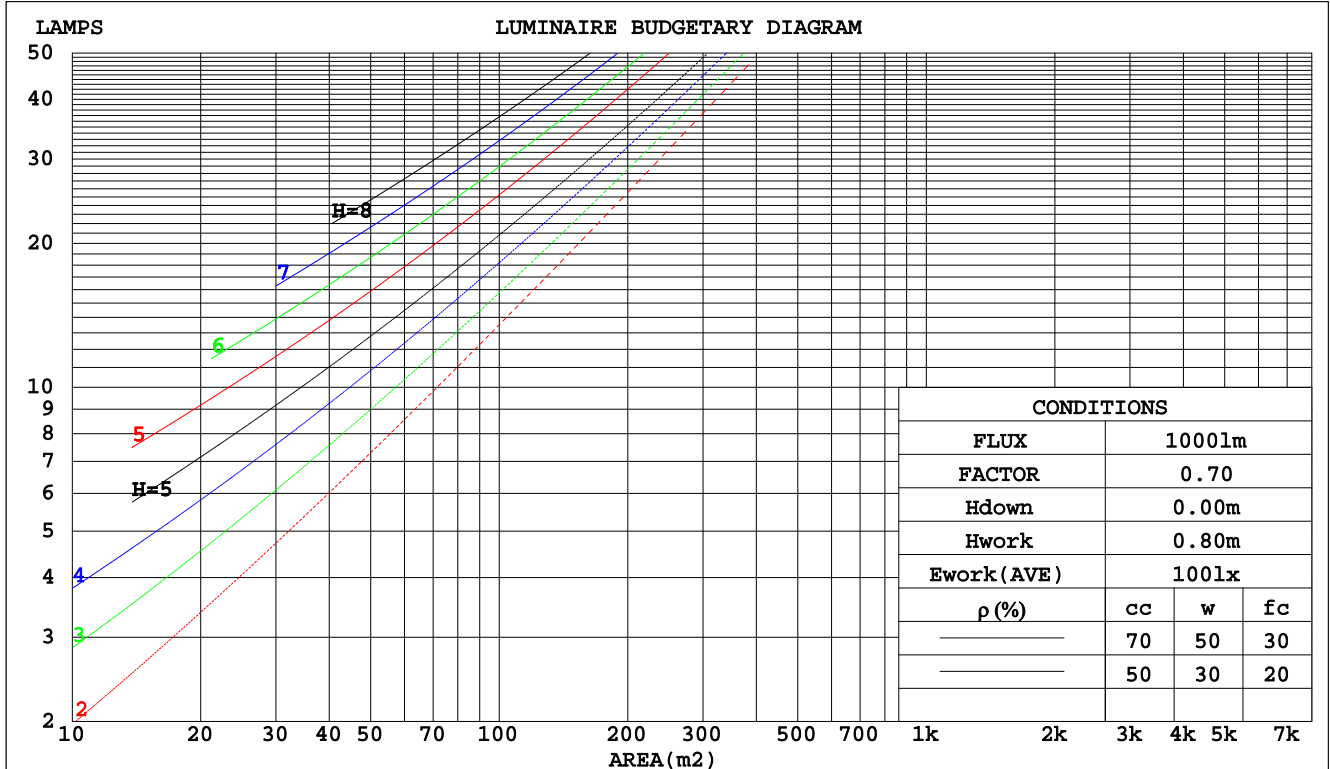
Checker: Near Gao

Assessor: Akin Xu

CU AND LUMINAIRE BUDGETARY ESTIMATE DIAGRAM

Test:U:3.520V I:0.7280A P:2.563W PF:1.000 Freq:0Hz Lamp Flux:321.554x1 lm		
NAME: 1	TYPE:	WEIGHT:
SPEC.:	DIM.:	SERIAL No.:
MFR.:	SUR.:	Shielding Angle:

pcc	80%			70%			50%			30%			10%			0
	50%	30%	10%	50%	30%	10%	50%	30%	10%	50%	30%	10%	50%	30%	10%	0
pw																0
pfc	20%			20%			20%			20%			20%			0
RCR	RCR:Room Cavity Ratio Coefficients of Utilization(CU)															
0.0	1.19	1.19	1.19	1.16	1.16	1.16	1.11	1.11	1.11	1.06	1.06	1.06	1.02	1.02	1.02	.00
1.0	1.05	1.01	.98	1.03	.99	.96	.99	.96	.93	.95	.92	.90	.91	.89	.87	.85
2.0	.92	.85	.80	.90	.84	.79	.86	.81	.77	.83	.79	.75	.80	.77	.73	.71
3.0	.80	.72	.66	.79	.71	.65	.76	.70	.64	.73	.68	.63	.71	.66	.62	.60
4.0	.71	.62	.56	.70	.62	.55	.67	.60	.55	.65	.59	.54	.63	.57	.53	.51
5.0	.63	.54	.48	.62	.54	.47	.60	.53	.47	.58	.52	.46	.56	.51	.46	.44
6.0	.57	.48	.42	.56	.47	.41	.54	.47	.41	.52	.46	.41	.51	.45	.40	.38
7.0	.51	.43	.37	.51	.42	.36	.49	.42	.36	.48	.41	.36	.46	.40	.36	.34
8.0	.47	.38	.32	.46	.38	.32	.45	.37	.32	.44	.37	.32	.42	.36	.32	.30
9.0	.43	.35	.29	.42	.34	.29	.41	.34	.29	.40	.33	.29	.39	.33	.29	.27
10.0	.40	.32	.26	.39	.31	.26	.38	.31	.26	.37	.31	.26	.36	.30	.26	.24



C Range: 0 - 360DEG
 C Interval: 22.5DEG
 Test Speed: HIGH
 Temperature: 25.1DEG
 Operators: Wilson
 Test Date: 2019-06-18

γ Range: 0 - 180DEG
 γ Interval: 0.5DEG
 Test System: EVERFINE GO-R5000_V2 SYSTEM V2.0.354
 Humidity: 60.5%
 Test Distance: 2.718m [K=1.0000]
 Remarks: File No.: WT-F-504-3206-01-A

Checker: Near Gao

Assessor: Akin Xu

WEC AND CCEC

Test:U:3.520V I:0.7280A P:2.563W PF:1.000 Freq:0Hz Lamp Flux:321.554x1 lm		
NAME: 1	TYPE:	WEIGHT:
SPEC.:	DIM.:	SERIAL No.:
MFR.:	SUR.:	Shielding Angle:

ρcc	80%			70%			50%			30%			10%			0
ρw	50%	30%	10%	50%	30%	10%	50%	30%	10%	50%	30%	10%	50%	30%	10%	0
ρfc	20%			20%			20%			20%			20%			0
RCR	RCR:Room Cavity Ratio						Wall Exitance Coefficients(WEC)									
0.0																
1.0	.285	.162	.051	.278	.158	.050	.265	.152	.048	.252	.146	.047	.241	.140	.045	
2.0	.279	.153	.047	.272	.150	.046	.261	.145	.045	.250	.140	.044	.240	.136	.043	
3.0	.263	.140	.042	.257	.138	.041	.247	.134	.041	.237	.130	.040	.229	.127	.039	
4.0	.245	.127	.037	.240	.126	.037	.231	.123	.037	.223	.120	.036	.215	.117	.036	
5.0	.228	.116	.034	.224	.115	.033	.216	.112	.033	.208	.110	.033	.201	.107	.032	
6.0	.212	.106	.030	.208	.105	.030	.201	.103	.030	.194	.101	.030	.188	.099	.029	
7.0	.198	.098	.028	.195	.097	.028	.188	.095	.027	.182	.093	.027	.176	.092	.027	
8.0	.185	.091	.025	.182	.090	.025	.176	.088	.025	.171	.087	.025	.166	.085	.025	
9.0	.174	.084	.023	.171	.083	.023	.166	.082	.023	.161	.081	.023	.156	.079	.023	
10.0	.163	.078	.022	.161	.078	.022	.156	.077	.022	.152	.075	.021	.148	.074	.021	

ρcc	80%			70%			50%			30%			10%			0
ρw	50%	30%	10%	50%	30%	10%	50%	30%	10%	50%	30%	10%	50%	30%	10%	0
ρfc	20%			20%			20%			20%			20%			0
RCR	RCR:Room Cavity Ratio						Ceiling Cavity Exitance Coefficients(CCEC)									
0.0	.191	.191	.191	.163	.163	.163	.112	.112	.112	.064	.064	.064	.020	.020	.020	
1.0	.179	.157	.137	.153	.135	.118	.105	.093	.082	.060	.054	.047	.019	.017	.015	
2.0	.171	.133	.100	.147	.114	.087	.101	.079	.060	.058	.046	.035	.019	.015	.012	
3.0	.164	.115	.076	.140	.099	.066	.096	.069	.046	.056	.040	.027	.018	.013	.009	
4.0	.157	.102	.060	.134	.088	.052	.092	.061	.037	.053	.036	.022	.017	.012	.007	
5.0	.149	.091	.048	.128	.079	.042	.088	.055	.030	.051	.032	.018	.017	.011	.006	
6.0	.143	.083	.040	.123	.072	.035	.085	.050	.025	.049	.030	.015	.016	.010	.005	
7.0	.136	.076	.034	.117	.066	.030	.081	.046	.021	.047	.027	.013	.015	.009	.004	
8.0	.130	.070	.030	.111	.061	.026	.077	.043	.018	.045	.025	.011	.015	.008	.004	
9.0	.124	.065	.026	.106	.057	.023	.074	.040	.016	.043	.024	.010	.014	.008	.003	
10.0	.118	.061	.023	.102	.053	.020	.070	.037	.014	.041	.022	.009	.013	.007	.003	

C Range: 0 - 360DEG
 C Interval: 22.5DEG
 Test Speed: HIGH
 Temperature:25.1DEG
 Operators:Wilson
 Test Date:2019-06-18

γ Range: 0 - 180DEG
 γ Interval: 0.5DEG
 Test System:EVERFINE GO-R5000_V2 SYSTEM V2.0.354
 Humidity:60.5%
 Test Distance:2.718m [K=1.0000]
 Remarks: File No.: WT-F-504-3206-01-A

Checker: Near Gao

Assessor: Akin Xu

UGR(Unified Glare Rating) Table

Test:U:3.520V I:0.7280A P:2.563W PF:1.000 Freq:0Hz Lamp Flux:321.554x1 lm										
NAME: 1					TYPE:			WEIGHT:		
SPEC.:					DIM.:			SERIAL No.:		
MFR.:					SUR.:			Shielding Angle:		
ceiling/cavity	0.7	0.7	0.5	0.5	0.3	0.7	0.7	0.5	0.5	0.3
walls	0.5	0.3	0.5	0.3	0.3	0.5	0.3	0.5	0.3	0.3
working plane	0.2	0.2	0.2	0.2	0.2	0.2	0.2	0.2	0.2	0.2
Room dimensions	Viewed crosswise					Viewed endwise				
x = 2H y = 2H	32.6	34.1	32.9	34.4	34.6	32.6	34.1	32.9	34.3	34.5
3H	34.5	35.9	34.8	36.2	36.4	34.5	35.9	34.8	36.1	36.4
4H	34.8	36.1	35.1	36.3	36.6	34.7	36.0	35.0	36.3	36.5
6H	34.6	35.9	35.0	36.2	36.4	34.6	35.8	34.9	36.1	36.4
8H	34.6	35.8	34.9	36.1	36.4	34.5	35.7	34.9	36.0	36.3
12H	34.5	35.7	34.9	36.0	36.3	34.5	35.6	34.8	35.9	36.2
4H 2H	33.4	34.8	33.8	35.0	35.3	33.4	34.7	33.7	35.0	35.3
3H	35.3	36.5	35.7	36.8	37.1	35.3	36.5	35.7	36.8	37.1
4H	35.6	36.6	35.9	36.9	37.3	35.5	36.6	35.9	36.9	37.2
6H	35.5	36.4	35.9	36.7	37.1	35.4	36.4	35.8	36.7	37.1
8H	35.4	36.3	35.8	36.6	37.0	35.4	36.2	35.8	36.6	37.0
12H	35.4	36.2	35.8	36.5	37.0	35.3	36.1	35.8	36.5	36.9
8H 4H	35.6	36.4	36.0	36.8	37.2	35.5	36.4	35.9	36.8	37.1
6H	35.5	36.2	35.9	36.6	37.0	35.5	36.2	35.9	36.6	37.0
8H	35.5	36.1	35.9	36.5	37.0	35.4	36.0	35.9	36.5	36.9
12H	35.4	35.9	35.9	36.4	36.9	35.4	35.9	35.9	36.4	36.8
12H 4H	35.5	36.3	36.0	36.7	37.1	35.5	36.3	35.9	36.7	37.1
6H	35.5	36.1	35.9	36.5	37.0	35.4	36.0	35.9	36.5	36.9
8H	35.4	35.9	35.9	36.4	36.9	35.4	35.9	35.9	36.4	36.8
Variations with the observer position at spacings:										
S = 1.0H	+ 0.2 / - 0.3					+ 0.2 / - 0.3				
1.5H	+ 0.5 / - 0.4					+ 0.3 / - 0.4				
2.0H	+ 0.3 / - 0.5					+ 0.3 / - 0.5				

CIE Pub.117, 321.6 lm Total Lamp Luminous Flux Correct (8log(F/F0) = -3.9)

C Range: 0 - 360DEG
 C Interval: 22.5DEG
 Test Speed: HIGH
 Temperature:25.1DEG
 Operators:Wilson
 Test Date:2019-06-18

γ Range: 0 - 180DEG
 γ Interval: 0.5DEG
 Test System:EVERFINE GO-R5000_V2 SYSTEM V2.0.354
 Humidity:60.5%
 Test Distance:2.718m [K=1.0000]
 Remarks: File No.: WT-F-504-3206-01-A

Checker: Near Gao

Assessor: Akin Xu

UTILIZATION FACTORS TABLE

Test:U:3.520V I:0.7280A P:2.563W PF:1.000 Freq:0Hz Lamp Flux:321.554x1 lm		
NAME: 1	TYPE:	WEIGHT:
SPEC.:	DIM.:	SERIAL No.:
MFR.:	SUR.:	Shielding Angle:

REFLECTANCE										
Ceiling	0.8	0.8	0.8	0.7	0.7	0.7	0.5	0.5	0.5	0
Walls	0.7	0.5	0.3	0.7	0.5	0.3	0.7	0.5	0.3	0
Working plane	0.2	0.2	0.2	0.2	0.2	0.2	0.2	0.2	0.2	0
ROOM INDEX	UTILIZATION FACTORS(PERCENT) $k(RI) \times RCR = 5$									
k = 0.60	58	46	39	57	46	39	56	45	39	32
0.80	68	56	49	67	56	49	65	55	48	41
1.00	76	65	58	75	65	58	73	66	57	50
1.25	84	73	66	82	73	66	80	71	65	58
1.50	89	79	72	87	78	72	84	76	71	63
2.00	96	88	81	94	86	81	91	84	79	71
2.50	100	92	87	98	91	86	94	88	84	76
3.00	103	97	92	101	95	91	97	92	88	80
4.00	107	102	98	105	100	96	101	97	94	85
5.00	110	105	102	107	103	100	103	100	97	88
ROOM INDEX	UF(total)									Direct
According to DIN EN 13032-2 2004			Suspended				SHRNM = 1.25			

C Range: 0 - 360DEG
 C Interval: 22.5DEG
 Test Speed: HIGH
 Temperature:25.1DEG
 Operators:Wilson
 Test Date:2019-06-18

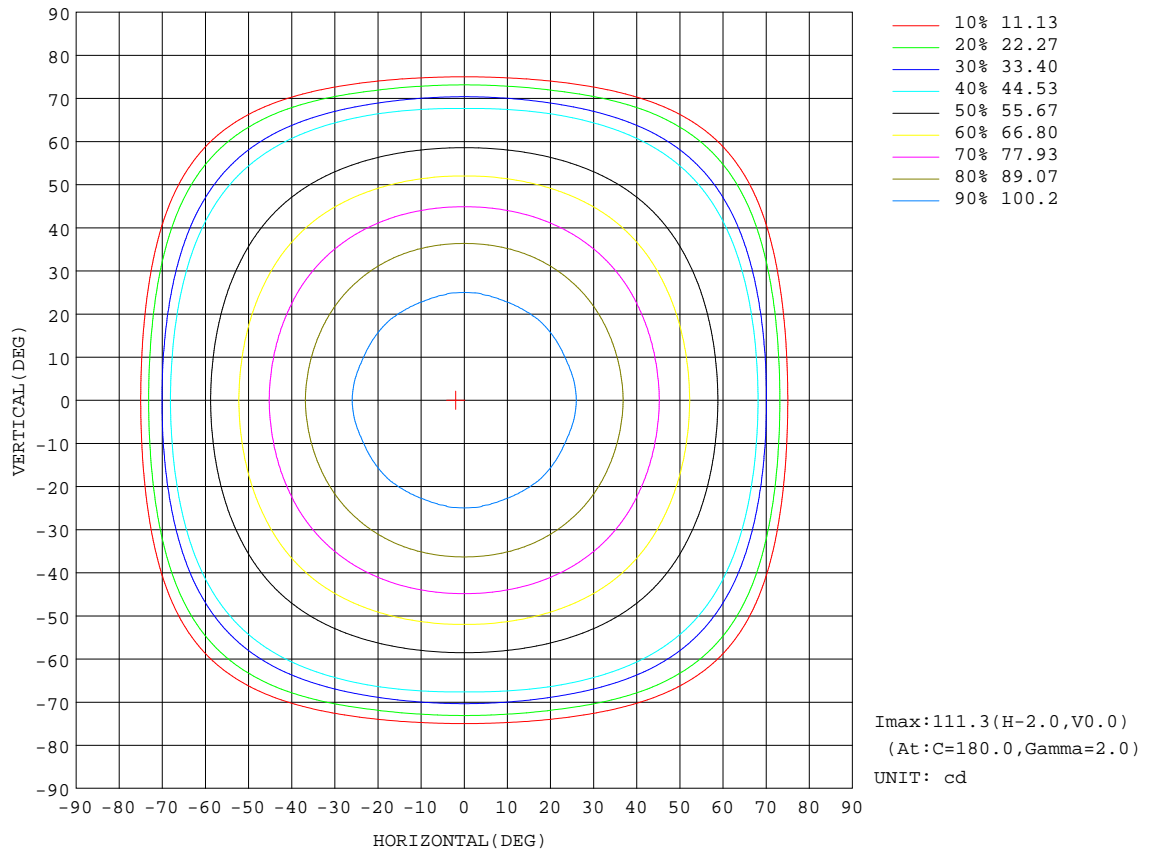
γ Range: 0 - 180DEG
 γ Interval: 0.5DEG
 Test System:EVERFINE GO-R5000_V2 SYSTEM V2.0.354
 Humidity:60.5%
 Test Distance:2.718m [K=1.0000]
 Remarks: File No.: WT-F-504-3206-01-A

Checker: Near Gao

Assessor: Akin Xu

ISOCANDELA DIAGRAM

Test:U:3.520V I:0.7280A P:2.563W PF:1.000 Freq:0Hz Lamp Flux:321.554x1 lm		
NAME: 1	TYPE:	WEIGHT:
SPEC.:	DIM.:	SERIAL No.:
MFR.:	SUR.:	Shielding Angle:



C Range: 0 - 360DEG
 C Interval: 22.5DEG
 Test Speed: HIGH
 Temperature: 25.1DEG
 Operators: Wilson
 Test Date: 2019-06-18

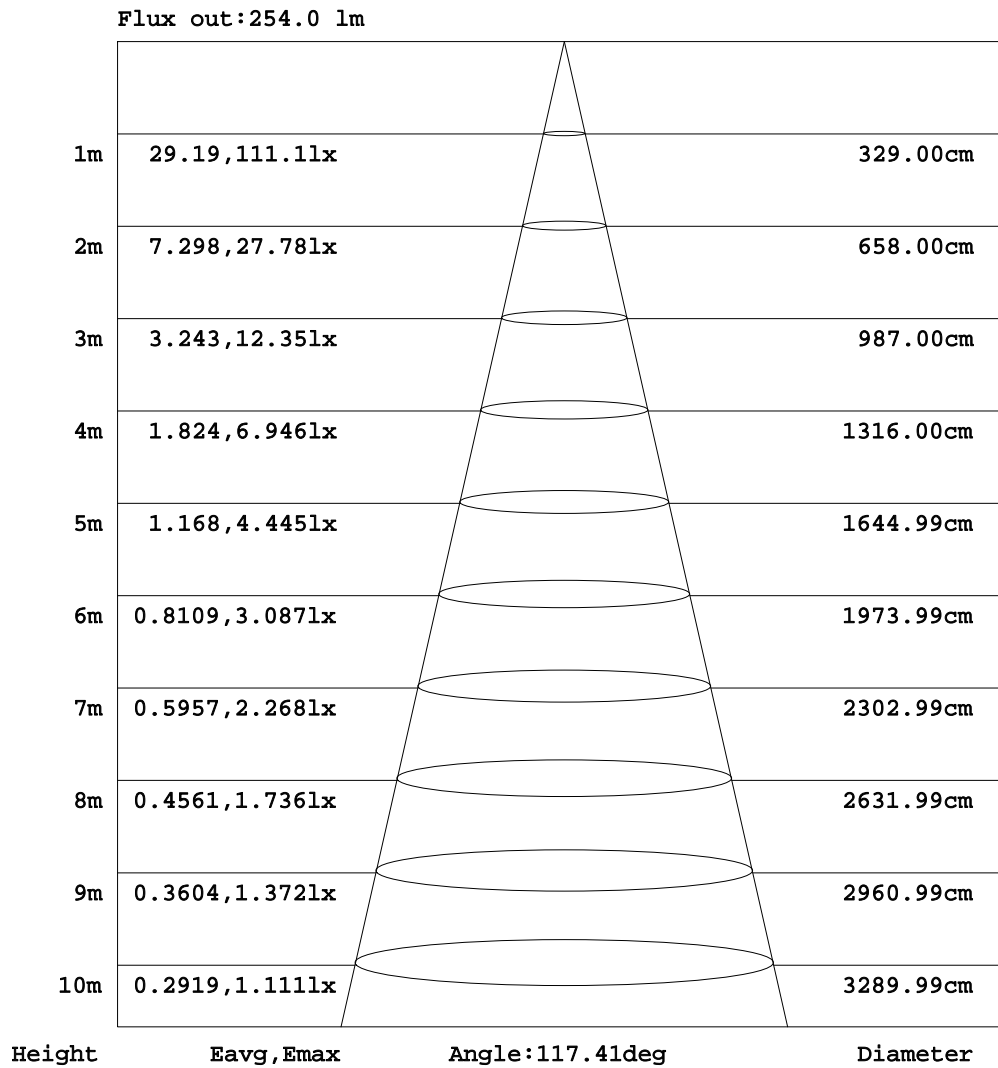
γ Range: 0 - 180DEG
 γ Interval: 0.5DEG
 Test System: EVERFINE GO-R5000_V2 SYSTEM V2.0.354
 Humidity: 60.5%
 Test Distance: 2.718m [K=1.0000]
 Remarks: File No.: WT-F-504-3206-01-A

Checker: Near Gao

Assessor: Akin Xu

AAI Figure

Test:U:3.520V I:0.7280A P:2.563W PF:1.000 Freq:0Hz Lamp Flux:321.554x1 lm		
NAME: 1	TYPE:	WEIGHT:
SPEC.:	DIM.:	SERIAL No.:
MFR.:	SUR.:	Shielding Angle:



Note:The Curves indicate the illuminated area and the average illumination when the luminaire is at different distance.

C Range: 0 - 360DEG
 C Interval: 22.5DEG
 Test Speed: HIGH
 Temperature:25.1DEG
 Operators:Wilson
 Test Date:2019-06-18

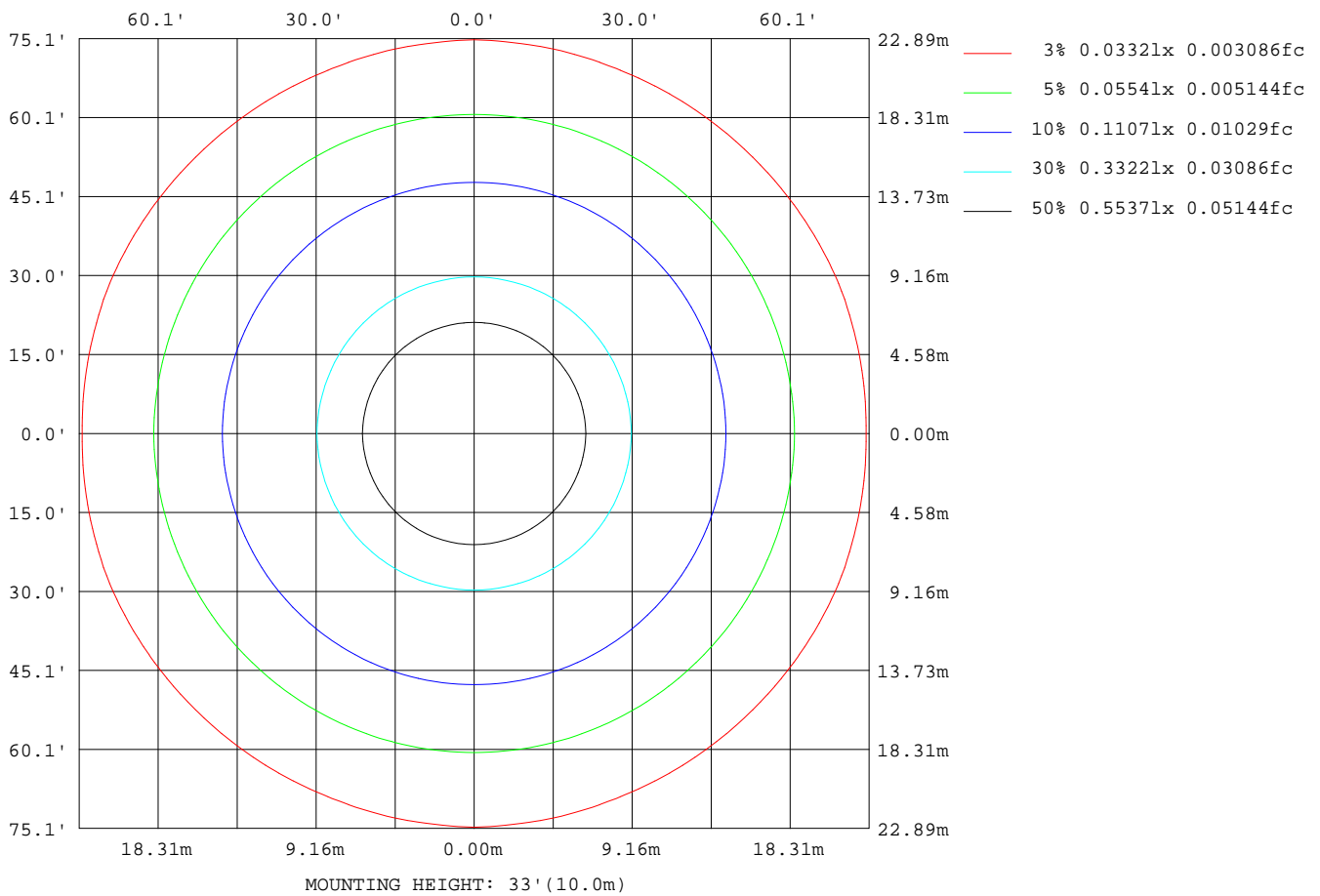
γ Range: 0 - 180DEG
 γ Interval: 0.5DEG
 Test System:EVERFINE GO-R5000_V2 SYSTEM V2.0.354
 Humidity:60.5%
 Test Distance:2.718m [K=1.0000]
 Remarks: File No.: WT-F-504-3206-01-A

Checker: Near Gao

Assessor: Akin Xu

ISOLUX DIAGRAM

Test:U:3.520V I:0.7280A P:2.563W PF:1.000 Freq:0Hz Lamp Flux:321.554x1 lm		
NAME: 1	TYPE:	WEIGHT:
SPEC.:	DIM.:	SERIAL No.:
MFR.:	SUR.:	Shielding Angle:



C Range: 0 - 360DEG
 C Interval: 22.5DEG
 Test Speed: HIGH
 Temperature:25.1DEG
 Operators:Wilson
 Test Date:2019-06-18

γ Range: 0 - 180DEG
 γ Interval: 0.5DEG
 Test System:EVERFINE GO-R5000_V2 SYSTEM V2.0.354
 Humidity:60.5%
 Test Distance:2.718m [K=1.0000]
 Remarks: File No.: WT-F-504-3206-01-A

Checker: Near Gao

Assessor: Akin Xu

LED Avg.L Report

Test:U:3.520V I:0.7280A P:2.563W PF:1.000 Freq:0Hz Lamp Flux:321.554x1 lm		
NAME: 1	TYPE:	WEIGHT:
SPEC.:	DIM.:	SERIAL No.:
MFR.:	SUR.:	Shielding Angle:

AvgL	cd/m2
L_0~180(65)av	99201
L_0~180(75)av	34392
L_0~180(85)av	460
L_90~270(65)av	94208
L_90~270(75)av	34121
L_90~270(85)av	495
L_45(65)av	96186
L_45(75)av	34595
L_45(85)av	438

Standard: GB/T 29293-2012

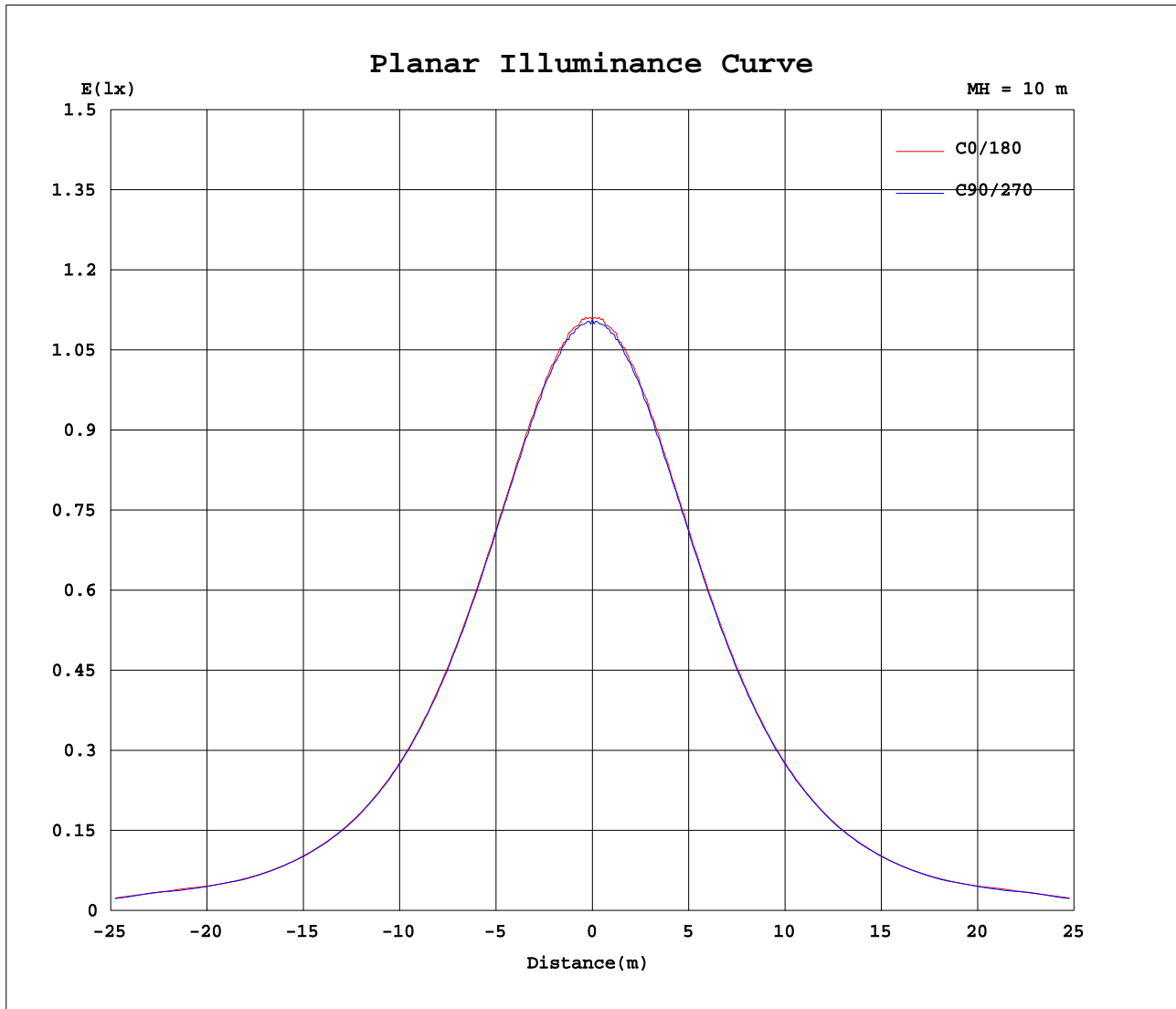
C Range: 0 - 360DEG
 C Interval: 22.5DEG
 Test Speed: HIGH
 Temperature:25.1DEG
 Operators:Wilson
 Test Date:2019-06-18

γ Range: 0 - 180DEG
 γ Interval: 0.5DEG
 Test System:EVERFINE GO-R5000_V2 SYSTEM V2.0.354
 Humidity:60.5%
 Test Distance:2.718m [K=1.0000]
 Remarks: File No.: WT-F-504-3206-01-A

Checker: Near Gao

Assessor: Akin Xu

Planar Illuminance Curve



C Range: 0 - 360DEG
 C Interval: 22.5DEG
 Test Speed: HIGH
 Temperature: 25.1DEG
 Operators: Wilson
 Test Date: 2019-06-18

γ Range: 0 - 180DEG
 γ Interval: 0.5DEG
 Test System: EVERFINE GO-R5000_V2 SYSTEM V2.0.354
 Humidity: 60.5%
 Test Distance: 2.718m [K=1.0000]
 Remarks: File No.: WT-F-504-3206-01-A

Checker: Near Gao

Assessor: Akin Xu

LUMINOUS DISTRIBUTION INTENSITY DATA

Test:U:3.520V I:0.7280A P:2.563W PF:1.000 Freq:0Hz Lamp Flux:321.554x1 lm		
NAME: 1	TYPE:	WEIGHT:
SPEC.:	DIM.:	SERIAL No.:
MFR.:	SUR.:	Shielding Angle:

Table--1

UNIT: cd

C(DEG)\ γ (DEG)	0	22.5	45	67.5	90	112.5	135	157.5	180	202.5	225	247.5	270	292.5	315	337.5			
0	111	111	111	111	111	111	111	111	111	111	111	111	111	111	111	111			
5	110	110	110	110	110	110	110	110	110	110	110	110	110	110	110	110			
10	109	109	109	109	109	109	109	109	109	109	109	109	109	109	109	109			
15	107	107	107	107	106	107	107	107	107	107	107	107	106	107	107	107			
20	104	104	104	104	104	104	104	104	104	104	104	104	104	104	104	104			
25	101	101	100	99.5	100	99.5	100	101	101	101	100	99.5	100	99.5	100	101			
30	96.5	95.9	96.2	95.9	95.8	95.9	96.2	95.9	96.5	95.9	96.2	95.9	95.8	95.9	96.2	95.9			
35	91.1	90.7	90.9	90.7	90.5	90.7	90.9	90.7	91.1	90.7	90.9	90.7	90.5	90.7	90.9	90.7			
40	85.0	84.7	84.4	84.8	84.6	84.8	84.4	84.7	85.0	84.7	84.4	84.8	84.6	84.8	84.4	84.7			
45	78.3	77.9	77.8	77.8	77.6	77.8	77.8	77.9	78.3	77.9	77.8	77.8	77.6	77.8	77.8	77.9			
50	70.4	70.2	70.3	70.2	70.1	70.2	70.3	70.2	70.4	70.2	70.3	70.2	70.1	70.2	70.3	70.2			
55	62.2	61.9	61.9	61.9	61.8	61.9	61.9	61.9	62.2	61.9	61.9	61.9	61.8	61.9	61.9	61.9			
60	53.8	53.2	53.2	53.3	53.0	53.3	53.2	53.2	53.8	53.2	53.2	53.3	53.0	53.3	53.2	53.2			
65	52.7	51.9	51.1	50.6	50.0	50.6	51.1	51.9	52.7	51.9	51.1	50.6	50.0	50.6	51.1	51.9			
70	33.5	33.6	34.1	34.3	35.4	34.3	34.1	33.6	33.5	33.6	34.1	34.3	35.4	34.3	34.1	33.6			
75	11.2	10.8	11.2	11.1	11.1	11.1	11.2	10.8	11.2	10.8	11.2	11.1	11.1	11.1	11.2	10.8			
80	0.22	0.22	0.21	0.21	0.22	0.21	0.21	0.22	0.22	0.22	0.21	0.21	0.22	0.21	0.21	0.22			
85	0.05	0.05	0.05	0.05	0.05	0.05	0.05	0.05	0.05	0.05	0.05	0.05	0.05	0.05	0.05	0.05			
90	0.00	0.00	0.00	0.00	0.00	0.00	0.00	0.00	0.00	0.00	0.00	0.00	0.00	0.00	0.00	0.00			
95	0.01	0.00	0.00	0.00	0.00	0.00	0.00	0.00	0.01	0.00	0.00	0.00	0.00	0.00	0.00	0.00			
100	0.01	0.01	0.01	0.01	0.01	0.01	0.01	0.01	0.01	0.01	0.01	0.01	0.01	0.01	0.01	0.01			
105	0.01	0.01	0.01	0.01	0.01	0.01	0.01	0.01	0.01	0.01	0.01	0.01	0.01	0.01	0.01	0.01			
110	0.01	0.01	0.01	0.01	0.01	0.01	0.01	0.01	0.01	0.01	0.01	0.01	0.01	0.01	0.01	0.01			
115	0.02	0.02	0.02	0.02	0.02	0.02	0.02	0.02	0.02	0.02	0.02	0.02	0.02	0.02	0.02	0.02			
120	0.03	0.03	0.03	0.03	0.03	0.03	0.03	0.03	0.03	0.03	0.03	0.03	0.03	0.03	0.03	0.03			
125	0.04	0.04	0.03	0.03	0.03	0.03	0.03	0.04	0.04	0.04	0.03	0.03	0.03	0.03	0.03	0.04			
130	0.05	0.04	0.04	0.04	0.04	0.04	0.04	0.04	0.05	0.04	0.04	0.04	0.04	0.04	0.04	0.04			
135	0.06	0.06	0.06	0.06	0.06	0.06	0.06	0.06	0.06	0.06	0.06	0.06	0.06	0.06	0.06	0.06			
140	0.08	0.08	0.08	0.08	0.08	0.08	0.08	0.08	0.08	0.08	0.08	0.08	0.08	0.08	0.08	0.08			
145	0.10	0.10	0.10	0.11	0.11	0.11	0.10	0.10	0.10	0.10	0.10	0.11	0.11	0.11	0.10	0.10			
150	0.12	0.12	0.13	0.13	0.13	0.13	0.13	0.12	0.12	0.12	0.13	0.13	0.13	0.13	0.13	0.12			
155	0.14	0.15	0.15	0.15	0.15	0.15	0.15	0.15	0.14	0.15	0.15	0.15	0.15	0.15	0.15	0.15			
160	0.16	0.16	0.17	0.17	0.17	0.17	0.17	0.16	0.16	0.16	0.17	0.17	0.17	0.17	0.17	0.16			
165	0.17	0.17	0.18	0.18	0.17	0.18	0.18	0.17	0.17	0.17	0.18	0.18	0.17	0.18	0.18	0.17			
170	0.18	0.17	0.17	0.17	0.17	0.17	0.17	0.17	0.18	0.17	0.17	0.17	0.17	0.17	0.17	0.17			
175	0.17	0.17	0.16	0.16	0.16	0.16	0.16	0.17	0.17	0.17	0.16	0.16	0.16	0.16	0.16	0.17			
180	0.18	0.17	0.17	0.16	0.15	0.16	0.17	0.17	0.18	0.17	0.17	0.16	0.15	0.16	0.17	0.17			

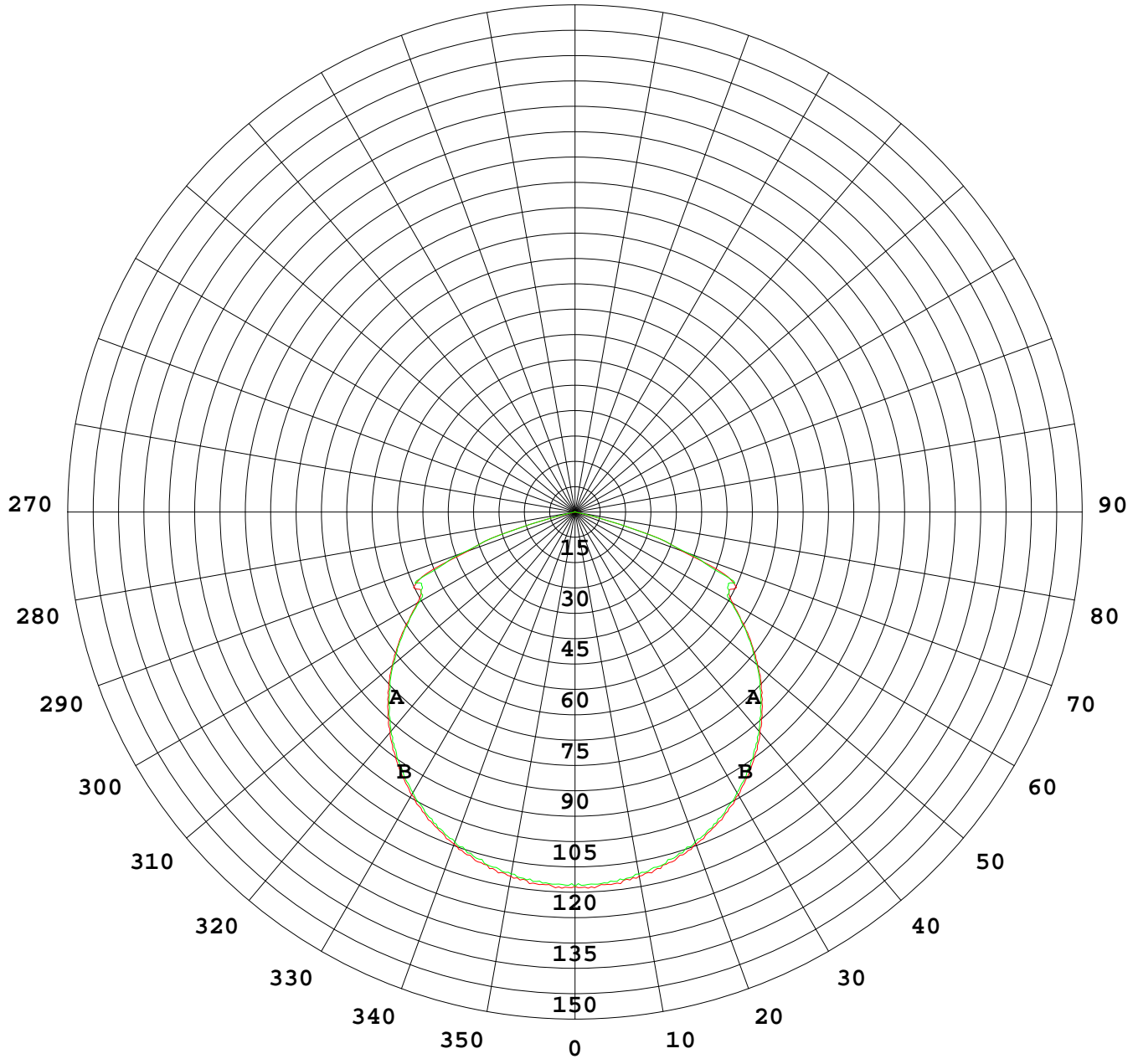
C Range: 0 - 360DEG
 C Interval: 22.5DEG
 Test Speed: HIGH
 Temperature:25.1DEG
 Operators:Wilson
 Test Date:2019-06-18

γ Range: 0 - 180DEG
 γ Interval: 0.5DEG
 Test System:EVERFINE GO-R5000_V2 SYSTEM V2.0.354
 Humidity:60.5%
 Test Distance:2.718m [K=1.0000]
 Remarks: File No.: WT-F-504-3206-01-A

Checker: Near Gao

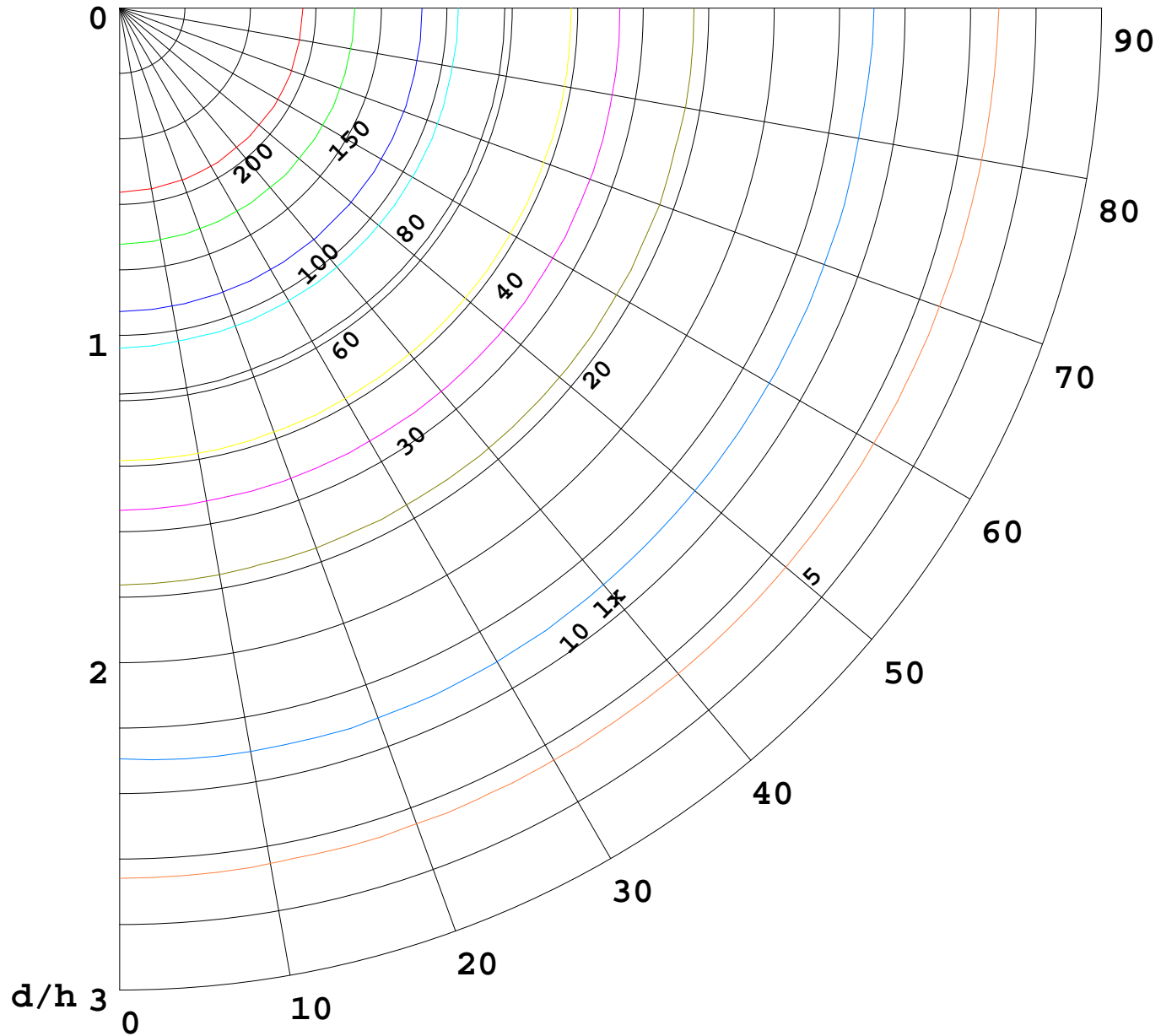
Assessor: Akin Xu

I(cd)



1000 lm

$K = 1$



F = 1000 lm
K = 0.7
Hcc = 0.8 m
Hfc = 0.0 m
Eave = 100 lx

	Pcc	Pw	Pfc
—————	70	50	30
—————	50	30	20

