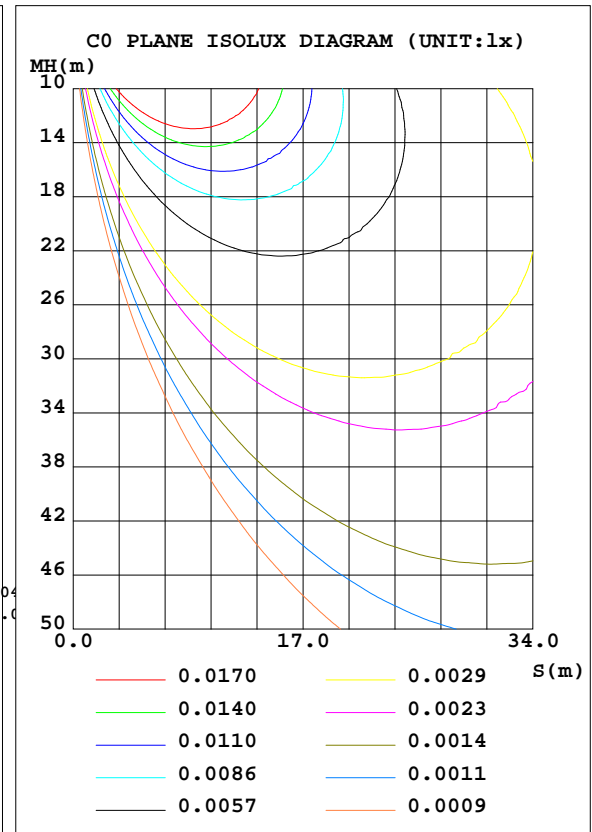
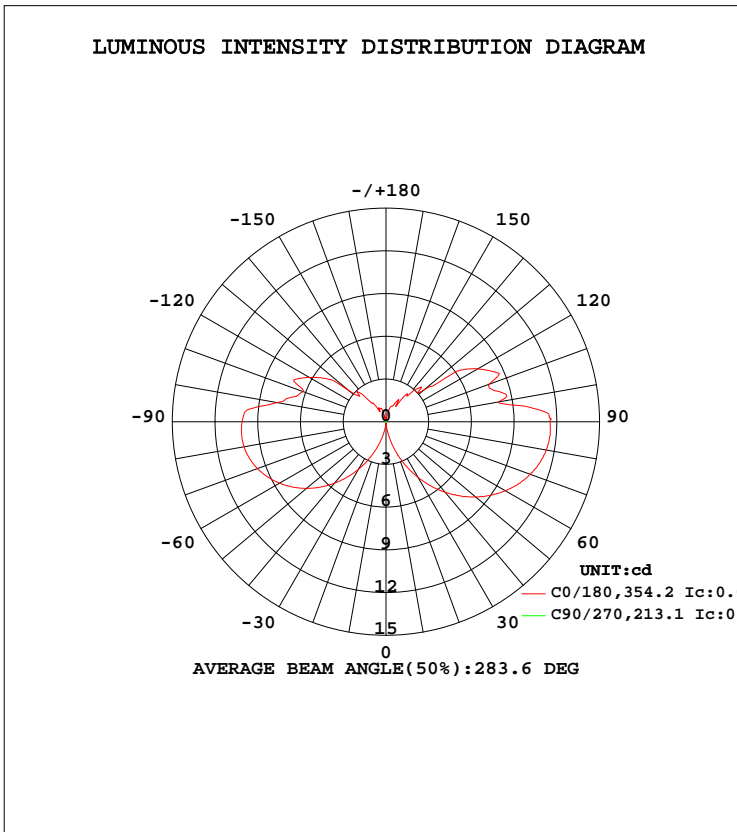


LUMINAIRE PHOTOMETRIC TEST REPORT

Test:U:3.270V I:0.3529A P:1.154W PF:1.000 Freq:0Hz Lamp Flux:44.5649x1 lm		
NAME: 1	TYPE:	WEIGHT:
SPEC.:	DIM.:	SERIAL No.:
MFR.:	SUR.:	Shielding Angle:

DATA OF LAMP		PHOTOMETRIC DATA Eff: 38.62 lm/W			
MODEL	GWJBE1801	I _{max} (cd)	11.62	S/MH(C0/180)	14.17
NOMINAL POWER(W)	1.1	LOR(%)	100.0	S/MH(C90/270)	1.41
RATED VOLTAGE(V)	240	TOTAL FLUX(lm)	44.565	η UP, DN(C0-180)	20.2, 29.8
NOMINAL FLUX(lm)	44.5649	CIE CLASS	DIFFUSE	η UP, DN(C180-360)	20.3, 29.6
LAMPS INSIDE	1	η up(%)	40.6	CIBSE SHR NOM	1.00
TEST VOLTAGE(V)	240	η down(%)	59.4	CIBSE SHR MAX	1.15



C Range: 0 - 360DEG
 C Interval: 22.5DEG
 Test Speed: HIGH
 Temperature:25.1DEG
 Operators:Wilson
 Test Date:2019-01-15

γ Range: 0 - 180DEG
 γ Interval: 0.5DEG
 Test System:EVERFINE GO-R5000_V2 SYSTEM V2.0.354
 Humidity:60.5%
 Test Distance:2.718m [K=1.0000]
 Remarks: File No.: WT-F-504-3206-01-A

Checker: Near Gao

Assessor: Akin Xu

ZONAL FLUX DIAGRAM

ZONAL FLUX DIAGRAM:

γ	C0	C45	C90	C135	C180	C225	C270	C315	γ	Φ zone	Φ total	%lum,lamp
5	0.2272	0.1123	0.0405	0.1080	0.1774	0.1015	0.0417	0.1136	0- 5	0.0018	0.0018	0.00,0.00
10	0.7890	0.3613	0.0405	0.3344	0.6267	0.3138	0.0414	0.3762	5- 10	0.0166	0.0184	0.04,0.04
15	1.593	0.7467	0.0402	0.6680	1.274	0.6366	0.0405	0.7903	10- 15	0.0631	0.0815	0.18,0.18
20	2.526	1.223	0.0393	1.071	2.061	1.034	0.0399	1.298	15- 20	0.1525	0.2340	0.53,0.53
25	3.521	1.741	0.0384	1.531	2.927	1.478	0.0393	1.855	20- 25	0.2889	0.5229	1.17,1.17
30	4.525	2.287	0.0364	2.019	3.838	1.958	0.0370	2.442	25- 30	0.4704	0.9933	2.23,2.23
35	5.507	2.844	0.0352	2.528	4.744	2.448	0.0375	3.031	30- 35	0.6931	1.686	3.78,3.78
40	6.472	3.391	0.0340	3.004	5.639	2.939	0.0364	3.599	35- 40	0.9509	2.637	5.92,5.92
45	7.362	3.929	0.0304	3.488	6.485	3.422	0.0360	4.159	40- 45	1.233	3.870	8.68,8.68
50	8.225	4.442	0.0292	3.967	7.282	3.884	0.0349	4.699	45- 50	1.529	5.399	12.1,12.1
55	9.000	4.916	0.0259	4.365	7.999	4.303	0.0343	5.186	50- 55	1.832	7.231	16.2,16.2
60	9.690	5.394	0.0226	4.723	8.631	4.682	0.0310	5.616	55- 60	2.127	9.358	21,21
65	10.27	5.692	0.0206	5.030	9.173	5.003	0.0304	6.013	60- 65	2.402	11.76	26.4,26.4
70	10.80	6.007	0.0173	5.268	9.606	5.280	0.0298	6.341	65- 70	2.647	14.41	32.3,32.3
75	11.18	6.214	0.0140	5.461	9.935	5.463	0.0262	6.616	70- 75	2.852	17.26	38.7,38.7
80	11.42	6.397	0.0111	5.545	10.12	5.566	0.0229	6.776	75- 80	3.005	20.26	45.5,45.5
85	11.56	6.450	0.0072	5.608	10.18	5.597	0.0200	6.848	80- 85	3.097	23.36	52.4,52.4
90	11.55	6.411	0.0025	5.545	10.10	5.555	0.0161	6.834	85- 90	3.125	26.49	59.4,59.4
95	10.51	5.972	0	5.364	9.758	5.393	0.0122	6.708	90- 95	3.064	29.55	66.3,66.3
100	8.050	5.053	0.0015	4.556	7.773	4.749	0.0137	5.819	95-100	2.639	32.19	72.2,72.2
105	8.227	4.615	0.0018	3.952	6.770	4.165	0.0167	5.116	100-105	2.255	34.44	77.3,77.3
110	7.690	4.156	0.0042	3.368	6.227	3.505	0.0197	4.542	105-110	1.956	36.40	81.7,81.7
115	8.340	3.681	0.0056	3.115	7.046	2.868	0.0239	4.076	110-115	1.849	38.25	85.8,85.8
120	7.434	3.174	0.0063	2.746	6.231	2.533	0.0257	3.311	115-120	1.620	39.87	89.5,89.5
125	6.287	2.708	0.0069	2.388	5.335	2.243	0.0259	2.746	120-125	1.332	41.20	92.5,92.5
130	3.520	2.312	0.0072	2.026	3.448	1.842	0.0253	2.408	125-130	1.005	42.21	94.7,94.7
135	3.419	1.909	0.0060	1.562	2.728	1.439	0.0218	2.011	130-135	0.7274	42.94	96.3,96.3
140	2.408	1.588	0.0062	1.184	2.277	1.098	0.0215	1.738	135-140	0.5502	43.49	97.6,97.6
145	2.031	1.161	0.0066	0.8437	1.629	0.9323	0.0209	1.348	140-145	0.3868	43.87	98.4,98.4
150	1.808	0.9180	0.0066	0.7208	0.8642	0.8980	0.0185	1.016	145-150	0.2541	44.13	99,99
155	1.356	0.9471	0.0066	0.7139	0.9894	0.7907	0.0167	0.9893	150-155	0.1950	44.32	99.5,99.5
160	1.174	0.7915	0.0066	0.3034	1.018	0.3465	0.0158	0.8251	155-160	0.1338	44.46	99.8,99.8
165	0.9695	0.5182	0.0072	0.3437	0.3940	0.3019	0.0125	0.4377	160-165	0.0759	44.53	99.9,99.9
170	0.3585	0.0447	0.0072	0.1395	0.3471	0.1454	0.0119	0.0703	165-170	0.0283	44.56	100,100
175	0.0562	0.0329	0.0071	0.0285	0.0805	0.0257	0.0077	0.0343	170-175	0.0053	44.56	100,100
180	0.0065	0.0071	0.0069	0.0080	0.0055	0.0064	0.0069	0.0068	175-180	0.0004	44.56	100,100
DEG	LUMINOUS INTENSITY:cd									UNIT:lm		

Conical surface Flux(90deg): 3.8702 lm

%lum = 8.7%

%lamp = 8.7%

Conical surface Flux(120deg): 9.3579 lm

%lum = 21.0%

%lamp = 21.0%

C Range: 0 - 360DEG
 C Interval: 22.5DEG
 Test Speed: HIGH
 Temperature:25.1DEG
 Operators:Wilson
 Test Date:2019-01-15

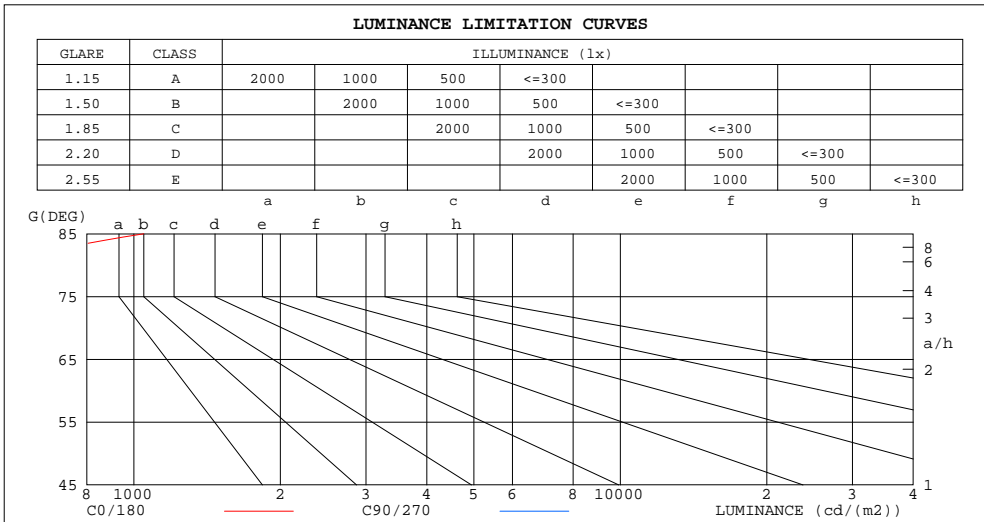
γ Range: 0 - 180DEG
 γ Interval: 0.5DEG
 Test System:EVERFINE GO-R5000_V2 SYSTEM V2.0.354
 Humidity:60.5%
 Test Distance:2.718m [K=1.0000]
 Remarks: File No.: WT-F-504-3206-01-A

Checker: Near Gao

Assessor: Akin Xu

LUMINANCE LIMITATION CURVES

Test:U:3.270V I:0.3529A P:1.154W PF:1.000 Freq:0Hz Lamp Flux:44.5649x1 lm		
NAME: 1	TYPE:	WEIGHT:
SPEC.:	DIM.:	SERIAL No.:
MFR.:	SUR.:	Shielding Angle:



LUMINANCE cd/(m2)		
G(DEG)	C0/180	C90/270
85	1048	1
80	520	1
75	341	0
70	249	0
65	192	0
60	153	0
55	124	0
50	101	0
45	82	0

C Range: 0 - 360DEG
 C Interval: 22.5DEG
 Test Speed: HIGH
 Temperature:25.1DEG
 Operators:Wilson
 Test Date:2019-01-15

γ Range: 0 - 180DEG
 γ Interval: 0.5DEG
 Test System:EVERFINE GO-R5000_V2 SYSTEM V2.0.354
 Humidity:60.5%
 Test Distance:2.718m [K=1.0000]
 Remarks: File No.: WT-F-504-3206-01-A

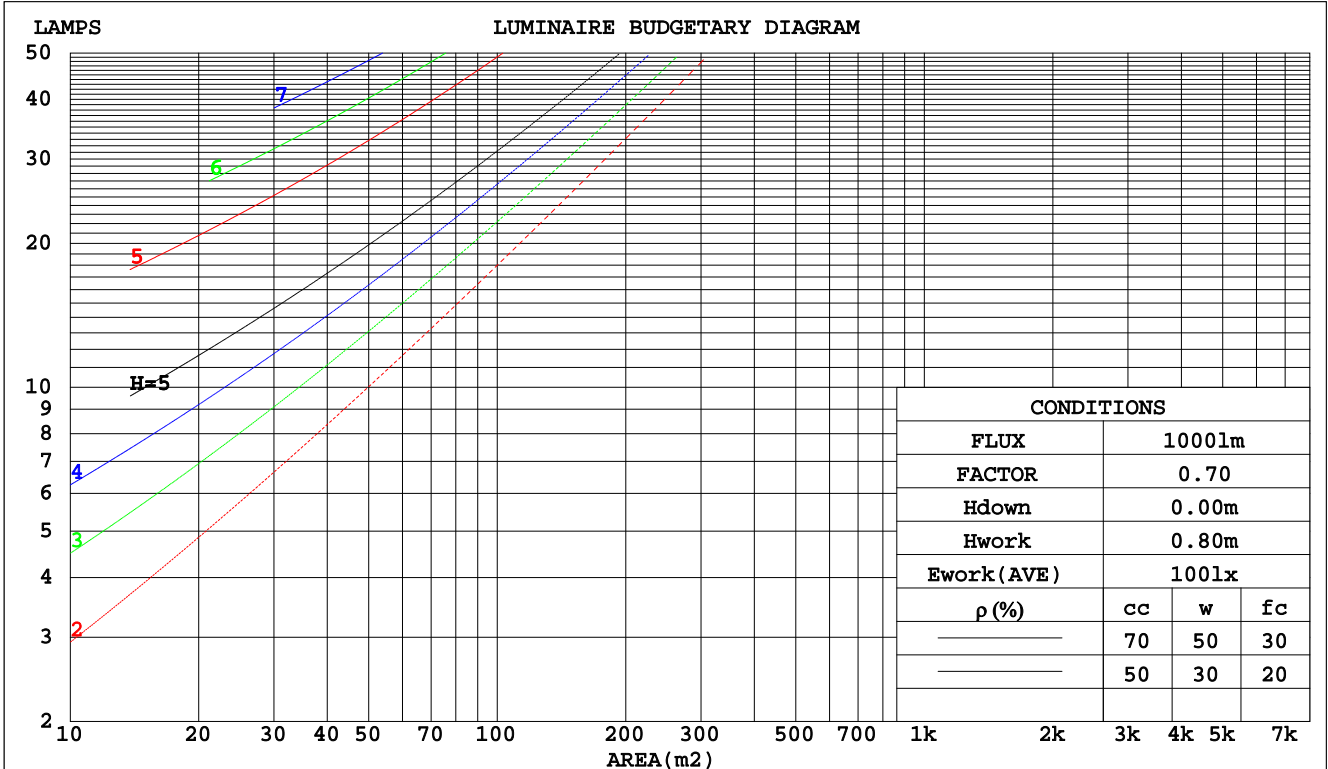
Checker: Near Gao

Assessor: Akin Xu

CU AND LUMINAIRE BUDGETARY ESTIMATE DIAGRAM

Test:U:3.270V I:0.3529A P:1.154W PF:1.000 Freq:0Hz Lamp Flux:44.5649x1 lm		
NAME: 1	TYPE:	WEIGHT:
SPEC.:	DIM.:	SERIAL No.:
MFR.:	SUR.:	Shielding Angle:

pcc	80%			70%			50%			30%			10%			0
	50%	30%	10%	50%	30%	10%	50%	30%	10%	50%	30%	10%	50%	30%	10%	0
pw																0
pfc	20%			20%			20%			20%			20%			0
RCR	RCR:Room Cavity Ratio						Coefficients of Utilization(CU)									
0.0	1.09	1.09	1.09	1.02	1.02	1.02	.89	.89	.89	.76	.76	.76	.65	.65	.65	.59
1.0	.85	.78	.72	.79	.73	.67	.67	.62	.58	.56	.52	.49	.46	.43	.40	.35
2.0	.70	.61	.53	.65	.57	.50	.54	.48	.42	.45	.40	.35	.36	.32	.28	.24
3.0	.59	.49	.41	.55	.46	.38	.46	.38	.32	.37	.32	.27	.30	.25	.21	.17
4.0	.51	.41	.33	.47	.38	.30	.39	.32	.26	.32	.26	.21	.25	.20	.16	.12
5.0	.45	.34	.27	.41	.32	.25	.34	.27	.21	.28	.22	.17	.22	.17	.13	.10
6.0	.39	.29	.22	.36	.27	.21	.30	.23	.17	.25	.19	.14	.19	.14	.11	.07
7.0	.35	.25	.19	.32	.24	.17	.27	.20	.14	.22	.16	.12	.17	.12	.09	.06
8.0	.31	.22	.16	.29	.21	.15	.24	.17	.12	.20	.14	.10	.16	.11	.07	.05
9.0	.28	.20	.14	.26	.18	.13	.22	.15	.11	.18	.12	.08	.14	.10	.06	.04
10.0	.26	.18	.12	.24	.16	.11	.20	.14	.09	.17	.11	.07	.13	.09	.05	.03



C Range: 0 - 360DEG
 C Interval: 22.5DEG
 Test Speed: HIGH
 Temperature:25.1DEG
 Operators:Wilson
 Test Date:2019-01-15

γ Range: 0 - 180DEG
 γ Interval: 0.5DEG
 Test System:EVERFINE GO-R5000_V2 SYSTEM V2.0.354
 Humidity:60.5%
 Test Distance:2.718m [K=1.0000]
 Remarks: File No.: WT-F-504-3206-01-A

Checker: Near Gao

Assessor: Akin Xu

WEC AND CCEC

Test:U:3.270V I:0.3529A P:1.154W PF:1.000 Freq:0Hz Lamp Flux:44.5649x1 lm		
NAME: 1	TYPE:	WEIGHT:
SPEC.:	DIM.:	SERIAL No.:
MFR.:	SUR.:	Shielding Angle:

ρcc	80%			70%			50%			30%			10%			0
ρw	50%	30%	10%	50%	30%	10%	50%	30%	10%	50%	30%	10%	50%	30%	10%	0
ρfc	20%			20%			20%			20%			20%			0
RCR	RCR:Room Cavity Ratio						Wall Exitance Coefficients(WEC)									
0.0																
1.0	.483	.274	.087	.463	.264	.084	.426	.244	.078	.392	.226	.073	.360	.209	.067	
2.0	.391	.214	.066	.373	.205	.063	.339	.189	.059	.308	.173	.054	.279	.158	.050	
3.0	.334	.178	.053	.318	.170	.051	.287	.156	.047	.258	.142	.043	.232	.128	.040	
4.0	.293	.153	.045	.278	.146	.043	.250	.133	.040	.224	.120	.036	.199	.108	.033	
5.0	.262	.133	.039	.248	.127	.037	.222	.116	.034	.198	.104	.031	.175	.094	.028	
6.0	.237	.119	.034	.224	.113	.033	.200	.103	.030	.178	.092	.027	.157	.083	.025	
7.0	.216	.107	.030	.204	.102	.029	.182	.092	.027	.161	.083	.024	.142	.074	.022	
8.0	.198	.097	.027	.188	.092	.026	.167	.084	.024	.148	.075	.022	.130	.067	.019	
9.0	.183	.089	.025	.173	.085	.024	.155	.076	.022	.137	.068	.020	.120	.061	.018	
10.0	.171	.082	.023	.161	.078	.022	.144	.070	.020	.127	.063	.018	.111	.056	.016	

ρcc	80%			70%			50%			30%			10%			0
ρw	50%	30%	10%	50%	30%	10%	50%	30%	10%	50%	30%	10%	50%	30%	10%	0
ρfc	20%			20%			20%			20%			20%			0
RCR	RCR:Room Cavity Ratio						Ceiling Cavity Exitance Coefficients(CCEC)									
0.0	.500	.500	.500	.427	.427	.427	.291	.291	.291	.167	.167	.167	.054	.054	.054	
1.0	.504	.466	.432	.431	.400	.372	.295	.275	.257	.170	.159	.150	.054	.051	.048	
2.0	.499	.445	.400	.428	.383	.346	.293	.265	.241	.169	.154	.141	.054	.050	.046	
3.0	.492	.430	.381	.422	.371	.330	.290	.258	.231	.167	.151	.136	.054	.049	.045	
4.0	.485	.419	.368	.416	.362	.320	.286	.252	.225	.165	.148	.133	.053	.048	.044	
5.0	.477	.410	.360	.409	.355	.314	.282	.248	.221	.163	.145	.131	.053	.047	.043	
6.0	.469	.402	.355	.403	.348	.309	.278	.244	.219	.161	.143	.130	.052	.047	.043	
7.0	.461	.396	.351	.397	.343	.305	.274	.241	.216	.159	.142	.129	.051	.046	.043	
8.0	.454	.391	.347	.391	.339	.303	.271	.238	.215	.157	.140	.128	.051	.046	.042	
9.0	.448	.386	.345	.386	.335	.301	.267	.236	.214	.156	.139	.127	.050	.046	.042	
10.0	.442	.382	.343	.381	.332	.299	.264	.234	.213	.154	.138	.127	.050	.045	.042	

C Range: 0 - 360DEG
 C Interval: 22.5DEG
 Test Speed: HIGH
 Temperature:25.1DEG
 Operators:Wilson
 Test Date:2019-01-15

γ Range: 0 - 180DEG
 γ Interval: 0.5DEG
 Test System:EVERFINE GO-R5000_V2 SYSTEM V2.0.354
 Humidity:60.5%
 Test Distance:2.718m [K=1.0000]
 Remarks: File No.: WT-F-504-3206-01-A

Checker: Near Gao

Assessor: Akin Xu

UGR(Unified Glare Rating) Table

Test:U:3.270V I:0.3529A P:1.154W PF:1.000 Freq:0Hz Lamp Flux:44.5649x1 lm										
NAME: 1					TYPE:			WEIGHT:		
SPEC.:					DIM.:			SERIAL No.:		
MFR.:					SUR.:			Shielding Angle:		
ceiling/cavity	0.7	0.7	0.5	0.5	0.3	0.7	0.7	0.5	0.5	0.3
walls	0.5	0.3	0.5	0.3	0.3	0.5	0.3	0.5	0.3	0.3
working plane	0.2	0.2	0.2	0.2	0.2	0.2	0.2	0.2	0.2	0.2
Room dimensions	Viewed crosswise					Viewed endwise				
x = 2H y = 2H	15.7	17.0	16.5	17.8	18.8	6.0	7.3	6.8	8.1	9.1
3H	19.8	20.9	20.6	21.8	22.8	7.5	8.6	8.3	9.5	10.5
4H	22.0	23.1	22.8	23.9	25.0	8.2	9.3	9.0	10.2	11.2
6H	24.3	25.4	25.2	26.2	27.3	8.8	9.9	9.7	10.7	11.8
8H	25.6	26.6	26.5	27.5	28.6	9.1	10.1	9.9	10.9	12.0
12H	27.1	28.0	27.9	28.9	30.0	9.2	10.2	10.1	11.1	12.2
4H 2H	16.1	17.2	16.9	18.1	19.1	11.2	12.3	12.0	13.2	14.3
3H	20.5	21.4	21.3	22.3	23.4	13.0	14.0	13.9	14.9	16.0
4H	22.9	23.8	23.8	24.7	25.8	13.8	14.7	14.7	15.6	16.8
6H	25.5	26.3	26.4	27.2	28.4	14.5	15.3	15.4	16.2	17.4
8H	26.9	27.7	27.8	28.6	29.8	14.8	15.5	15.7	16.5	17.6
12H	28.5	29.2	29.4	30.1	31.3	15.0	15.7	15.9	16.6	17.8
8H 4H	23.2	23.9	24.1	24.8	26.0	17.4	18.2	18.3	19.1	20.3
6H	26.1	26.8	27.0	27.7	28.9	18.7	19.3	19.6	20.3	21.5
8H	27.8	28.4	28.7	29.3	30.5	19.2	19.8	20.1	20.7	21.9
12H	29.6	30.2	30.6	31.1	32.4	19.6	20.1	20.5	21.1	22.3
12H 4H	23.1	23.9	24.0	24.8	26.0	18.6	19.3	19.5	20.2	21.4
6H	26.2	26.8	27.1	27.8	29.0	20.2	20.8	21.2	21.8	23.0
8H	28.0	28.5	28.9	29.5	30.7	21.0	21.6	22.0	22.5	23.8
Variations with the observer position at spacings:										
S = 1.0H	+ 0.1 / - 0.1					+ 0.1 / - 0.1				
1.5H	+ 0.2 / - 0.3					+ 0.1 / - 0.1				
2.0H	+ 0.3 / - 0.4					+ 0.3 / - 0.2				

CIE Pub.117, 44.56 lm Total Lamp Luminous Flux Correct (8log(F/F0) = -10.8)

C Range: 0 - 360DEG
 C Interval: 22.5DEG
 Test Speed: HIGH
 Temperature:25.1DEG
 Operators:Wilson
 Test Date:2019-01-15

γ Range: 0 - 180DEG
 γ Interval: 0.5DEG
 Test System:EVERFINE GO-R5000_V2 SYSTEM V2.0.354
 Humidity:60.5%
 Test Distance:2.718m [K=1.0000]
 Remarks: File No.: WT-F-504-3206-01-A

Checker: Near Gao

Assessor: Akin Xu

UTILIZATION FACTORS TABLE

Test:U:3.270V I:0.3529A P:1.154W PF:1.000 Freq:0Hz Lamp Flux:44.5649x1 lm		
NAME: 1	TYPE:	WEIGHT:
SPEC.:	DIM.:	SERIAL No.:
MFR.:	SUR.:	Shielding Angle:

REFLECTANCE										
Ceiling	0.8	0.8	0.8	0.7	0.7	0.7	0.5	0.5	0.5	0
Walls	0.7	0.5	0.3	0.7	0.5	0.3	0.7	0.5	0.3	0
Working plane	0.2	0.2	0.2	0.2	0.2	0.2	0.2	0.2	0.2	0
ROOM INDEX	UTILIZATION FACTORS(PERCENT) $k(RI) \times RCR = 5$									
k = 0.60	34	20	12	32	19	12	29	18	11	4
0.80	42	27	18	40	26	17	36	24	16	7
1.00	49	34	24	46	32	23	41	31	21	10
1.25	56	40	30	52	38	28	46	34	26	13
1.50	61	46	35	57	43	33	50	39	30	16
2.00	69	55	44	65	52	42	56	46	37	21
2.50	75	61	51	70	58	48	60	51	43	25
3.00	79	67	57	74	63	53	64	55	47	28
4.00	85	74	65	79	69	61	68	61	54	32
5.00	89	79	71	83	74	67	71	64	58	36
ROOM INDEX	UF(total)									Direct
According to DIN EN 13032-2 2004			Suspended				SHRNO = 1.25			

C Range: 0 - 360DEG
 C Interval: 22.5DEG
 Test Speed: HIGH
 Temperature:25.1DEG
 Operators:Wilson
 Test Date:2019-01-15

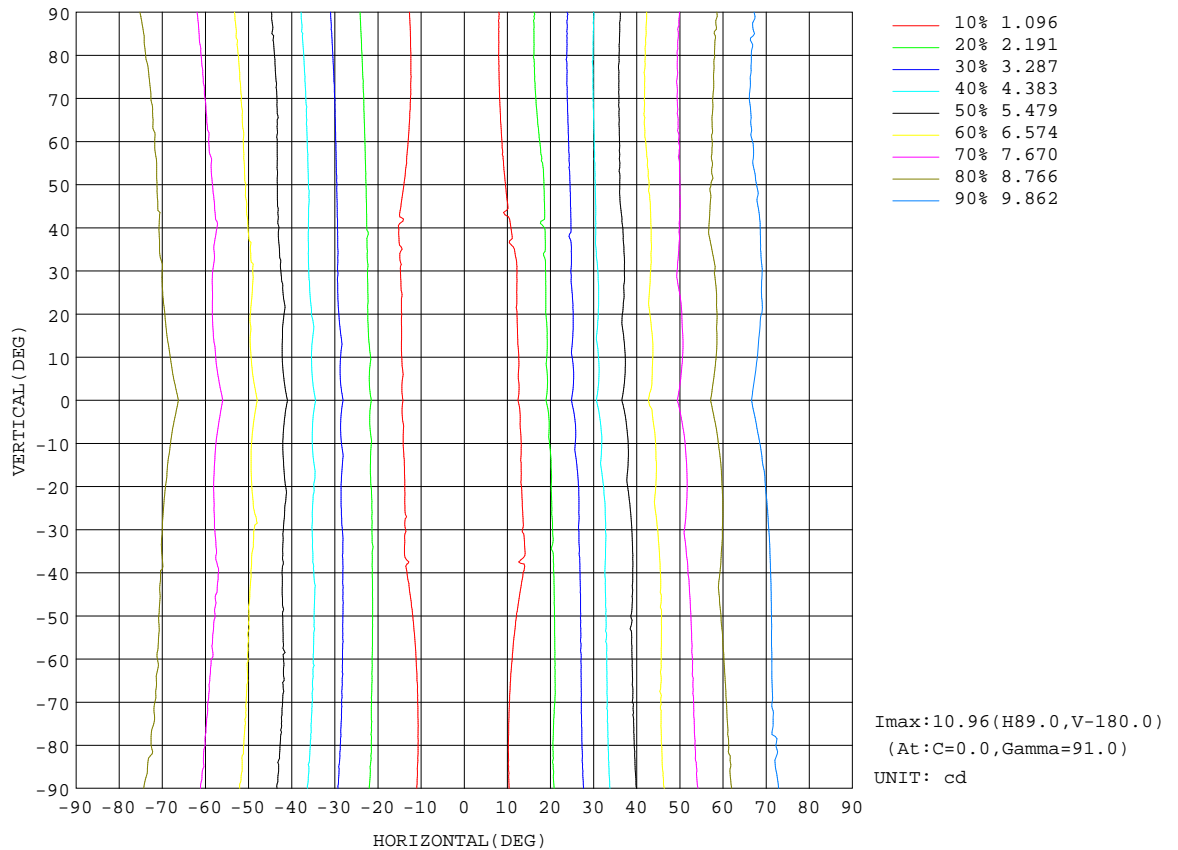
γ Range: 0 - 180DEG
 γ Interval: 0.5DEG
 Test System:EVERFINE GO-R5000_V2 SYSTEM V2.0.354
 Humidity:60.5%
 Test Distance:2.718m [K=1.0000]
 Remarks: File No.: WT-F-504-3206-01-A

Checker: Near Gao

Assessor: Akin Xu

ISOCANDELA DIAGRAM

Test:U:3.270V I:0.3529A P:1.154W PF:1.000 Freq:0Hz Lamp Flux:44.5649x1 lm		
NAME: 1	TYPE:	WEIGHT:
SPEC.:	DIM.:	SERIAL No.:
MFR.:	SUR.:	Shielding Angle:



C Range: 0 - 360DEG
 C Interval: 22.5DEG
 Test Speed: HIGH
 Temperature: 25.1DEG
 Operators: Wilson
 Test Date: 2019-01-15

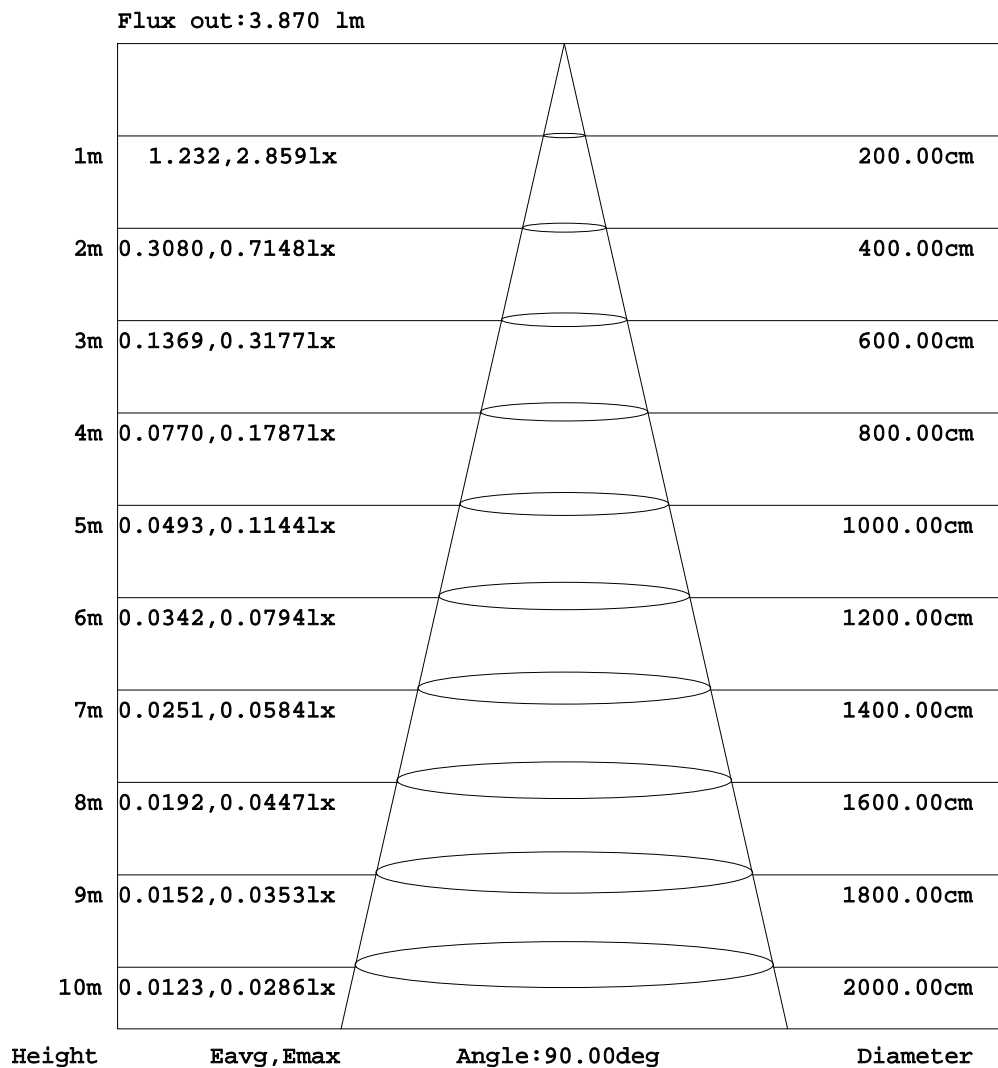
γ Range: 0 - 180DEG
 γ Interval: 0.5DEG
 Test System: EVERFINE GO-R5000_V2 SYSTEM V2.0.354
 Humidity: 60.5%
 Test Distance: 2.718m [K=1.0000]
 Remarks: File No.: WT-F-504-3206-01-A

Checker: Near Gao

Assessor: Akin Xu

AAI Figure

Test:U:3.270V I:0.3529A P:1.154W PF:1.000 Freq:0Hz Lamp Flux:44.5649x1 lm		
NAME: 1	TYPE:	WEIGHT:
SPEC.:	DIM.:	SERIAL No.:
MFR.:	SUR.:	Shielding Angle:



Note:The Curves indicate the illuminated area and the average illumination when the luminaire is at different distance.

C Range: 0 - 360DEG
 C Interval: 22.5DEG
 Test Speed: HIGH
 Temperature:25.1DEG
 Operators:Wilson
 Test Date:2019-01-15

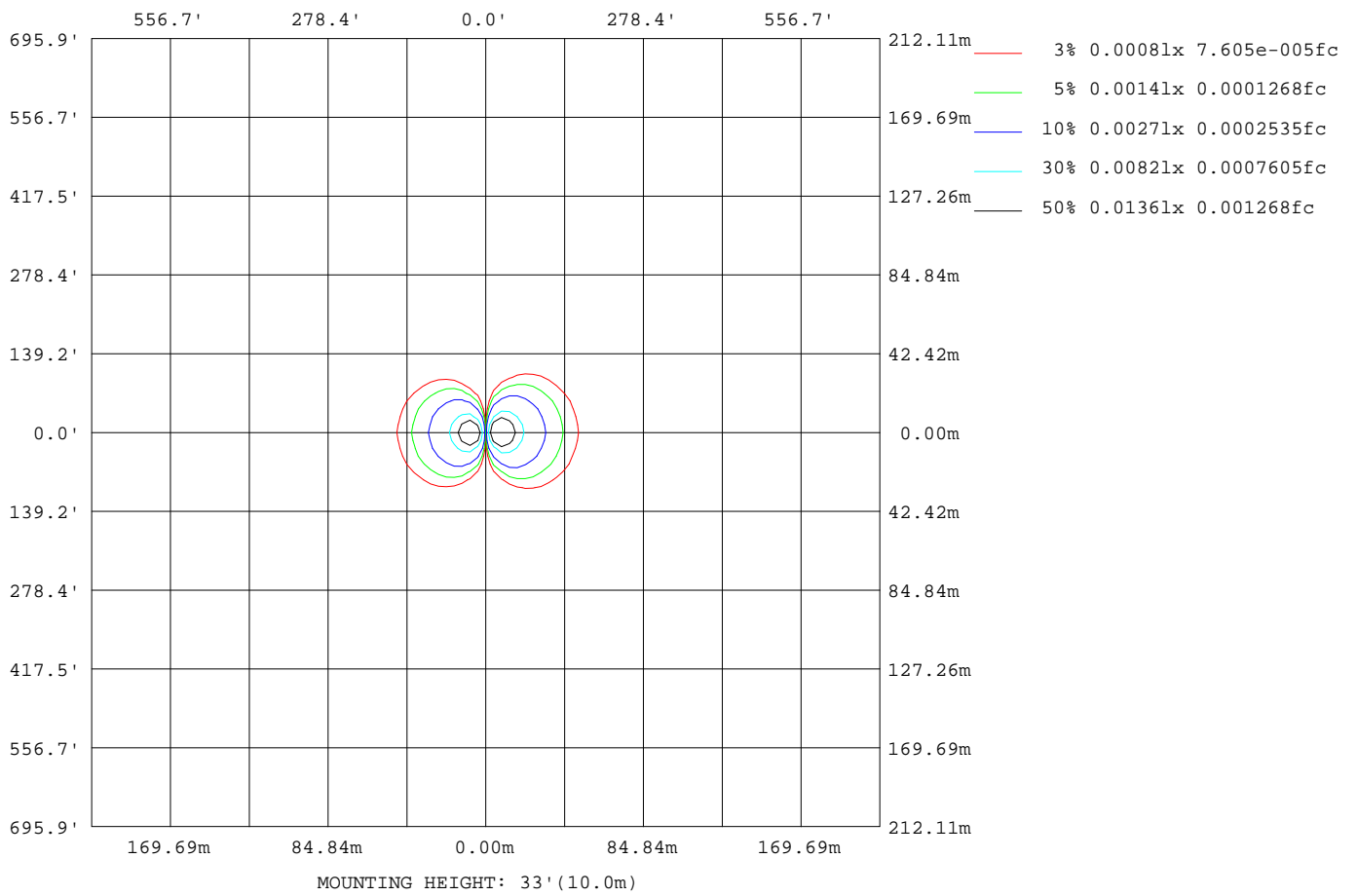
γ Range: 0 - 180DEG
 γ Interval: 0.5DEG
 Test System:EVERFINE GO-R5000_V2 SYSTEM V2.0.354
 Humidity:60.5%
 Test Distance:2.718m [K=1.0000]
 Remarks: File No.: WT-F-504-3206-01-A

Checker: Near Gao

Assessor: Akin Xu

ISOLUX DIAGRAM

Test:U:3.270V I:0.3529A P:1.154W PF:1.000 Freq:0Hz Lamp Flux:44.5649x1 lm		
NAME: 1	TYPE:	WEIGHT:
SPEC.:	DIM.:	SERIAL No.:
MFR.:	SUR.:	Shielding Angle:



C Range: 0 - 360DEG
 C Interval: 22.5DEG
 Test Speed: HIGH
 Temperature: 25.1DEG
 Operators: Wilson
 Test Date: 2019-01-15

γ Range: 0 - 180DEG
 γ Interval: 0.5DEG
 Test System: EVERFINE GO-R5000_V2 SYSTEM V2.0.354
 Humidity: 60.5%
 Test Distance: 2.718m [K=1.0000]
 Remarks: File No.: WT-F-504-3206-01-A

Checker: Near Gao

Assessor: Akin Xu

LED Avg.L Report

Test:U:3.270V I:0.3529A P:1.154W PF:1.000 Freq:0Hz Lamp Flux:44.5649x1 lm		
NAME: 1	TYPE:	WEIGHT:
SPEC.:	DIM.:	SERIAL No.:
MFR.:	SUR.:	Shielding Angle:

AvgL	cd/m2
L_0~180(65)av	193
L_0~180(75)av	342
L_0~180(85)av	1045
L_90~270(65)av	1
L_90~270(75)av	1
L_90~270(85)av	1
L_45(65)av	108
L_45(75)av	192
L_45(85)av	589

Standard: GB/T 29293-2012

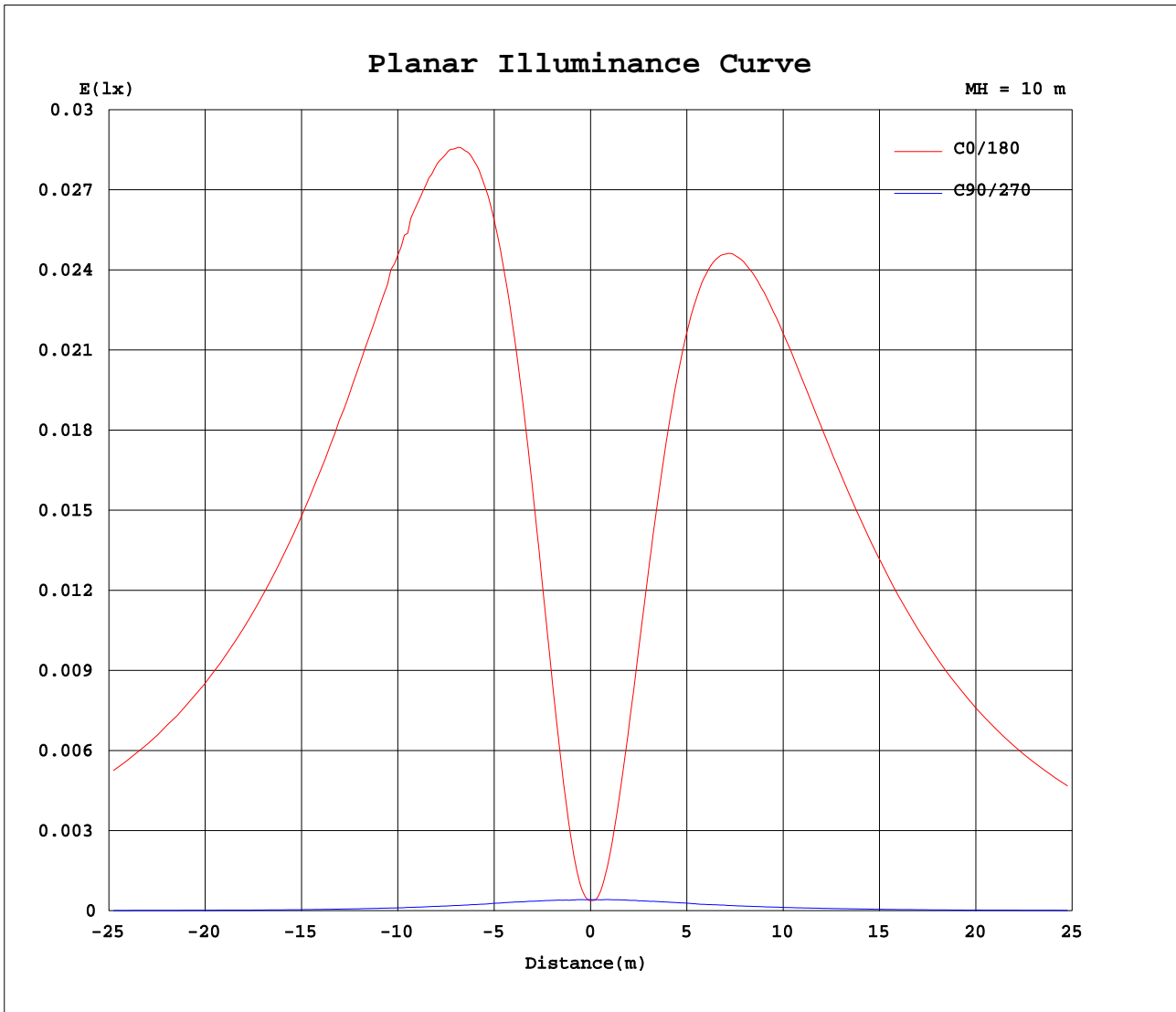
C Range: 0 - 360DEG
 C Interval: 22.5DEG
 Test Speed: HIGH
 Temperature:25.1DEG
 Operators:Wilson
 Test Date:2019-01-15

γ Range: 0 - 180DEG
 γ Interval: 0.5DEG
 Test System:EVERFINE GO-R5000_V2 SYSTEM V2.0.354
 Humidity:60.5%
 Test Distance:2.718m [K=1.0000]
 Remarks: File No.: WT-F-504-3206-01-A

Checker: Near Gao

Assessor: Akin Xu

Planar Illuminance Curve



C Range: 0 - 360DEG
 C Interval: 22.5DEG
 Test Speed: HIGH
 Temperature: 25.1DEG
 Operators: Wilson
 Test Date: 2019-01-15

γ Range: 0 - 180DEG
 γ Interval: 0.5DEG
 Test System: EVERFINE GO-R5000_V2 SYSTEM V2.0.354
 Humidity: 60.5%
 Test Distance: 2.718m [K=1.0000]
 Remarks: File No.: WT-F-504-3206-01-A

Checker: Near Gao

Assessor: Akin Xu

LUMINOUS DISTRIBUTION INTENSITY DATA

Test:U:3.270V I:0.3529A P:1.154W PF:1.000 Freq:0Hz Lamp Flux:44.5649x1 lm		
NAME: 1	TYPE:	WEIGHT:
SPEC.:	DIM.:	SERIAL No.:
MFR.:	SUR.:	Shielding Angle:

Table--1

UNIT: cd

C(DEG) γ (DEG)	0	22.5	45	67.5	90	112.5	135	157.5	180	202.5	225	247.5	270	292.5	315	337.5			
0	0.04	0.04	0.04	0.04	0.04	0.04	0.04	0.04	0.04	0.04	0.04	0.04	0.04	0.04	0.04	0.04			
5	0.23	0.18	0.11	0.05	0.04	0.06	0.11	0.16	0.18	0.16	0.10	0.05	0.04	0.06	0.11	0.18			
10	0.79	0.63	0.36	0.11	0.04	0.13	0.33	0.52	0.63	0.55	0.31	0.11	0.04	0.14	0.38	0.63			
15	1.59	1.30	0.75	0.21	0.04	0.24	0.67	1.06	1.27	1.11	0.64	0.20	0.04	0.27	0.79	1.29			
20	2.53	2.09	1.22	0.35	0.04	0.39	1.07	1.70	2.06	1.78	1.03	0.32	0.04	0.46	1.30	2.07			
25	3.52	2.98	1.74	0.51	0.04	0.55	1.53	2.41	2.93	2.53	1.48	0.47	0.04	0.68	1.86	2.89			
30	4.53	3.83	2.29	0.69	0.04	0.80	2.02	3.16	3.84	3.32	1.96	0.61	0.04	0.90	2.44	3.75			
35	5.51	4.69	2.84	0.88	0.04	0.93	2.53	3.89	4.74	4.11	2.45	0.79	0.04	1.14	3.03	4.59			
40	6.47	5.53	3.39	1.10	0.03	1.14	3.00	4.71	5.64	4.84	2.94	0.94	0.04	1.39	3.60	5.40			
45	7.36	6.34	3.93	1.28	0.03	1.33	3.49	5.35	6.49	5.63	3.42	1.12	0.04	1.67	4.16	6.18			
50	8.23	7.09	4.44	1.48	0.03	1.52	3.97	6.01	7.28	6.34	3.88	1.28	0.03	1.89	4.70	6.91			
55	9.00	7.78	4.92	1.67	0.03	1.70	4.37	6.61	8.00	6.96	4.30	1.43	0.03	2.13	5.19	7.58			
60	9.69	8.40	5.39	1.85	0.02	1.85	4.72	7.14	8.63	7.52	4.68	1.57	0.03	2.35	5.62	8.22			
65	10.27	8.94	5.69	2.01	0.02	1.98	5.03	7.59	9.17	8.00	5.00	1.69	0.03	2.55	6.01	8.70			
70	10.8	9.40	6.01	2.13	0.02	2.10	5.27	7.99	9.61	8.40	5.28	1.79	0.03	2.72	6.34	9.15			
75	11.2	9.74	6.21	2.23	0.01	2.16	5.46	8.20	9.94	8.69	5.46	1.86	0.03	2.86	6.62	9.52			
80	11.4	9.98	6.40	2.31	0.01	2.21	5.55	8.37	10.12	8.86	5.57	1.89	0.02	2.98	6.78	9.71			
85	11.6	10.08	6.45	2.31	0.01	2.22	5.61	8.44	10.18	8.89	5.60	1.90	0.02	2.99	6.85	9.82			
90	11.5	10.03	6.41	2.31	0.00	2.20	5.55	8.34	10.10	8.81	5.56	1.88	0.02	3.00	6.83	9.79			
95	10.51	8.88	5.97	2.22	0.00	2.13	5.36	7.96	9.76	8.42	5.39	1.83	0.01	2.92	6.71	9.25			
100	8.05	7.49	5.05	1.89	0.00	1.88	4.56	6.26	7.77	6.73	4.75	1.67	0.01	2.65	5.82	7.09			
105	8.23	6.67	4.61	1.54	0.00	1.54	3.95	5.38	6.77	5.71	4.17	1.40	0.02	2.21	5.12	6.91			
110	7.69	7.16	4.16	1.20	0.00	1.26	3.37	5.18	6.23	5.44	3.51	1.20	0.02	1.80	4.54	6.43			
115	8.34	6.69	3.68	1.02	0.01	1.01	3.11	5.35	7.05	5.50	2.87	1.01	0.02	1.48	4.08	6.60			
120	7.43	6.01	3.17	0.84	0.01	0.84	2.75	4.77	6.23	4.80	2.53	0.85	0.03	1.26	3.31	5.86			
125	6.29	4.83	2.71	0.84	0.01	0.72	2.39	4.04	5.34	4.03	2.24	0.76	0.03	1.17	2.75	4.76			
130	3.52	3.65	2.31	0.75	0.01	0.63	2.03	3.18	3.45	3.28	1.84	0.76	0.03	1.05	2.41	3.62			
135	3.42	2.90	1.91	0.73	0.01	0.62	1.56	2.45	2.73	2.58	1.44	0.72	0.02	0.98	2.01	2.81			
140	2.41	2.32	1.59	0.72	0.01	0.63	1.18	1.67	2.28	1.64	1.10	0.62	0.02	0.95	1.74	2.14			
145	2.03	1.46	1.16	0.66	0.01	0.57	0.84	1.23	1.63	1.19	0.93	0.49	0.02	0.86	1.35	1.48			
150	1.81	1.61	0.92	0.55	0.01	0.44	0.72	1.05	0.86	1.00	0.90	0.36	0.02	0.66	1.02	1.36			
155	1.36	1.20	0.95	0.37	0.01	0.31	0.71	0.92	0.99	0.96	0.79	0.24	0.02	0.42	0.99	1.12			
160	1.17	1.08	0.79	0.15	0.01	0.19	0.30	0.87	1.02	0.95	0.35	0.15	0.02	0.22	0.83	1.10			
165	0.97	0.80	0.52	0.06	0.01	0.10	0.34	0.19	0.39	0.22	0.30	0.08	0.01	0.09	0.44	0.81			
170	0.36	0.27	0.04	0.04	0.01	0.04	0.14	0.27	0.35	0.27	0.15	0.03	0.01	0.05	0.07	0.25			
175	0.06	0.06	0.03	0.01	0.01	0.01	0.03	0.06	0.08	0.06	0.03	0.01	0.01	0.02	0.03	0.05			
180	0.01	0.00	0.01	0.01	0.01	0.01	0.01	0.01	0.01	0.00	0.01	0.01	0.01	0.01	0.01	0.01			

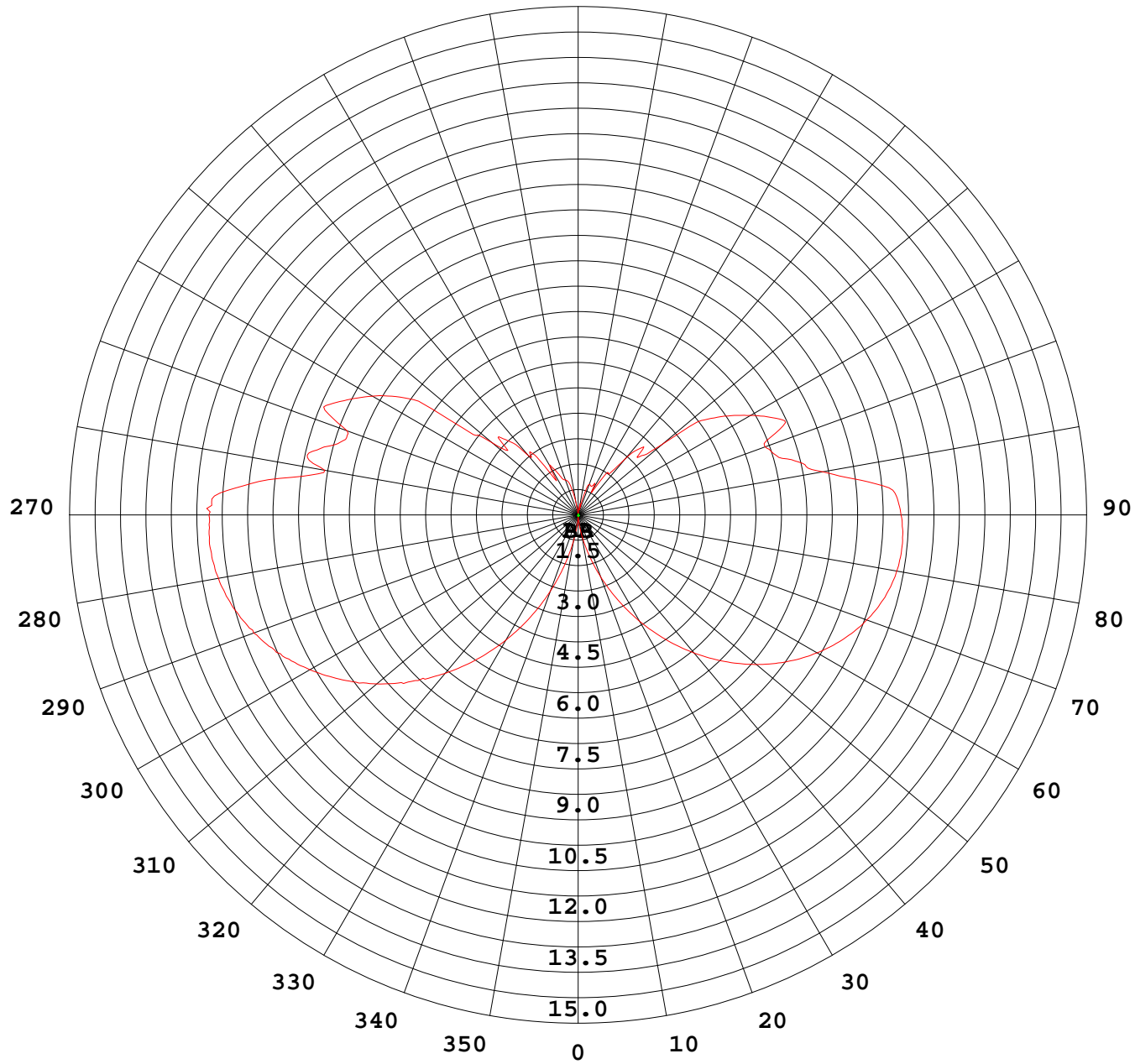
C Range: 0 - 360DEG
 C Interval: 22.5DEG
 Test Speed: HIGH
 Temperature:25.1DEG
 Operators:Wilson
 Test Date:2019-01-15

γ Range: 0 - 180DEG
 γ Interval: 0.5DEG
 Test System:EVERFINE GO-R5000_V2 SYSTEM V2.0.354
 Humidity:60.5%
 Test Distance:2.718m [K=1.0000]
 Remarks: File No.: WT-F-504-3206-01-A

Checker: Near Gao

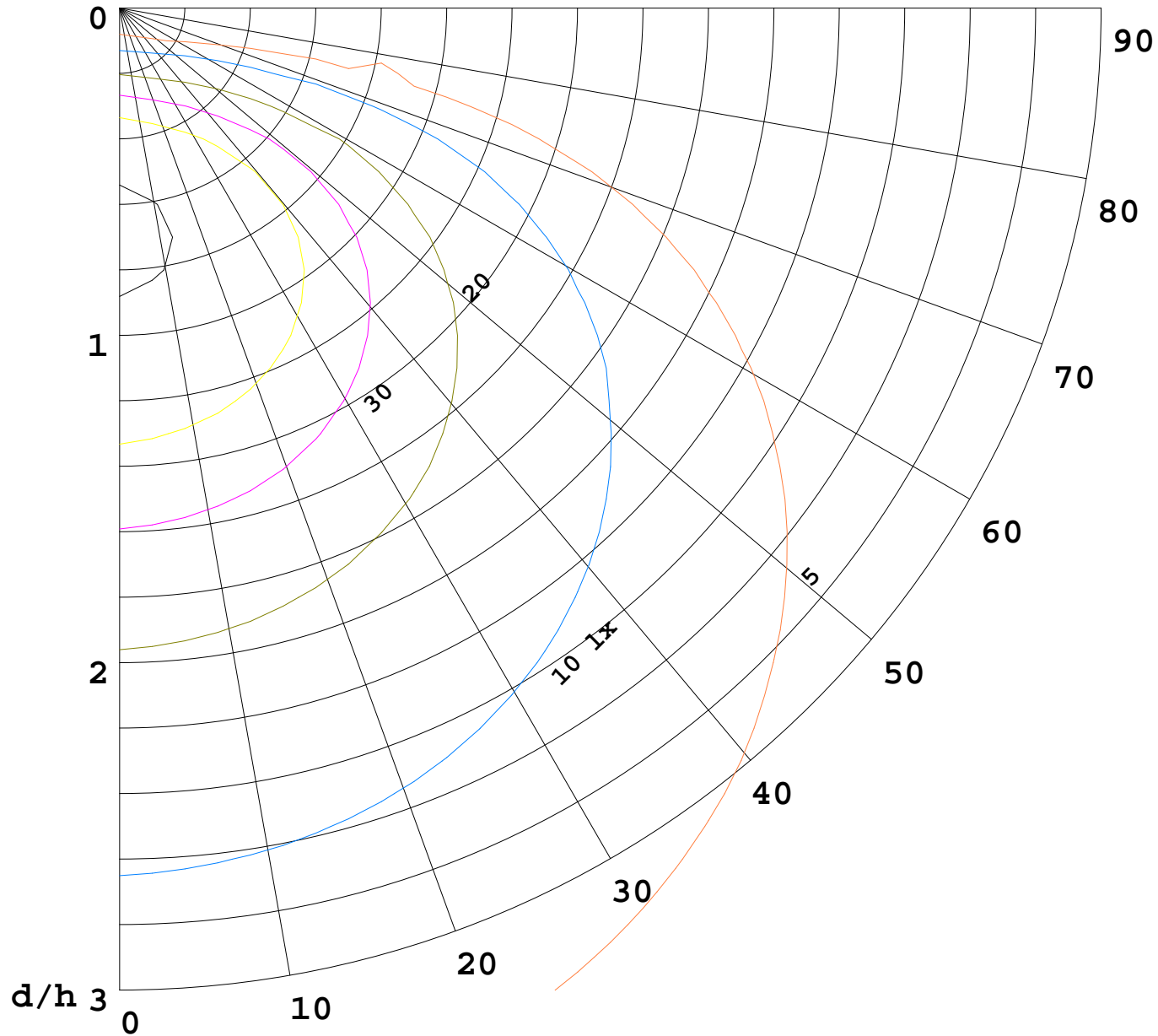
Assessor: Akin Xu

I (cd)



1000 lm

$K = 1$



F = 1000 lm
K = 0.7
Hcc = 0.8 m
Hfc = 0.0 m
Eave = 100 lx

	Pcc	Pw	Pfc
—————	70	50	30
—————	50	30	20

