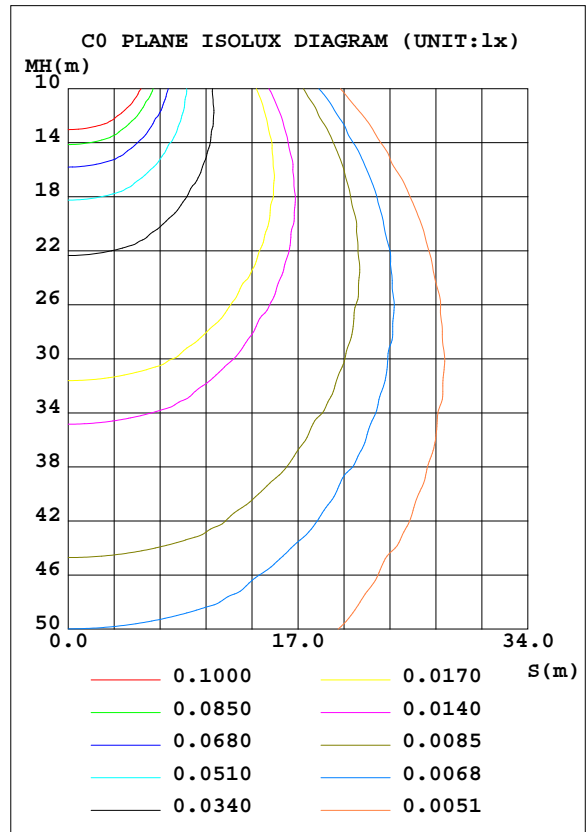
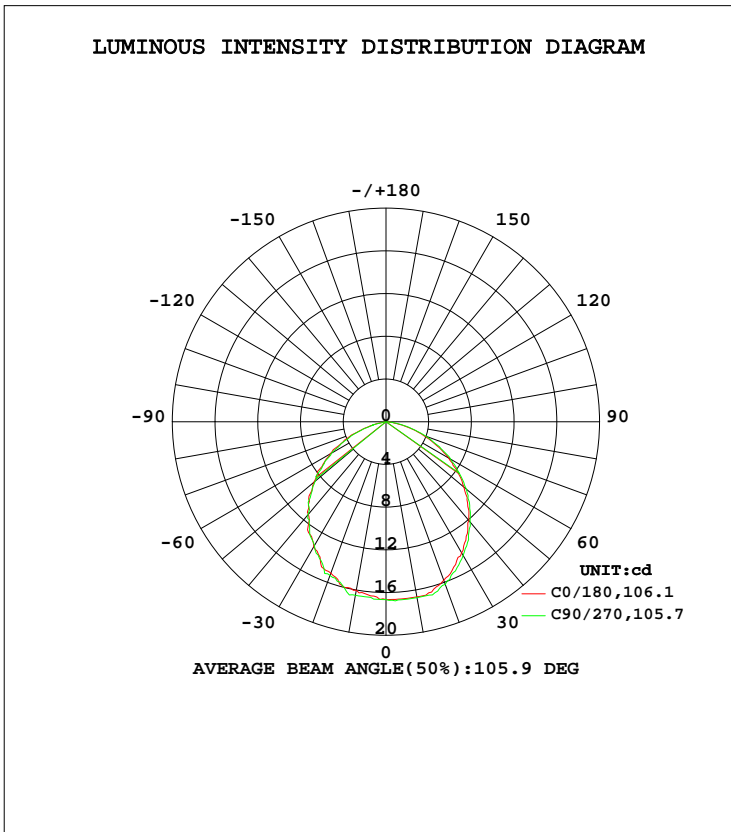


LUMINAIRE PHOTOMETRIC TEST REPORT

Test:U:0V I:0A P:0W PF:0.0000 Freq:0Hz Lamp Flux:43.0159x1 lm		
NAME: Emergency Exit Luminaire	TYPE:LED	WEIGHT:N/A
SPEC.:N/A	DIM.:	SERIAL No.:N/A
MFR.: CETRAM LIMITED	SUR.:	Shielding Angle:N/A

DATA OF LAMP		PHOTOMETRIC DATA			
MODEL	CTNE1711	I <sub>max</sub> (cd)	16.80	S/MH(C0/180)	1.21
NOMINAL POWER(W)		LOR(%)	100.0	S/MH(C90/270)	1.20
RATED VOLTAGE(V)		TOTAL FLUX(lm)	43.016	η UP, DN(C0-180)	0.0,52.9
NOMINAL FLUX(lm)	43.0159	CIE CLASS	DIRECT	η UP, DN(C180-360)	0.0,47.1
LAMPS INSIDE	1	η up(%)	0.0	CIBSE SHR NOM	1.25
TEST VOLTAGE(V)		η down(%)	100.0	CIBSE SHR MAX	1.35



C Range: 0 - 360DEG  
 C Interval: 22.5DEG  
 Test Speed: HIGH  
 Temperature:24.5DEG  
 Operators:William  
 Test Date:2018-09-19

γ Range: 0 - 180DEG  
 γ Interval: 1.0DEG  
 Test System:EVERFINE GO-R5000\_V2 SYSTEM V2.0.366  
 Humidity:65.7%  
 Test Distance:26.000m [K=1.3825]  
 Remarks:

ZONAL FLUX DIAGRAM

ZONAL FLUX DIAGRAM:

$\gamma$	C0	C45	C90	C135	C180	C225	C270	C315	$\gamma$	$\Phi$ zone	$\Phi$ total	%lum, lamp
10	16.65	16.65	16.72	16.65	16.01	16.29	16.50	16.36	0- 10	1.581	1.581	3.67,3.67
20	15.80	16.14	16.21	16.07	15.09	15.27	15.33	15.34	10- 20	4.577	6.158	14.3,14.3
30	14.17	14.40	14.45	14.33	13.52	13.45	13.42	13.45	20- 30	6.845	13.00	30.2,30.2
40	12.10	12.07	12.26	12.14	11.32	11.33	11.36	11.33	30- 40	8.061	21.06	49,49
50	9.543	9.674	9.830	9.599	8.819	8.576	8.646	8.574	40- 50	8.096	29.16	67.8,67.8
60	6.764	6.764	6.973	6.698	6.041	5.886	5.930	5.953	50- 60	6.930	36.09	83.9,83.9
70	3.712	3.645	3.971	3.567	2.912	2.469	2.711	2.607	60- 70	4.730	40.82	94.9,94.9
80	1.071	1.164	1.253	1.098	0.2834	0.0727	0.0721	0.0711	70- 80	2.000	42.82	99.5,99.5
90	0	0	0	0	0	0	0	0	80- 90	0.1961	43.02	100,100
100	0	0	0	0	0	0	0	0	90-100	0	43.02	100,100
110	0	0	0	0	0	0	0	0	100-110	0	43.02	100,100
120	0	0	0	0	0	0	0	0	110-120	0	43.02	100,100
130	0	0	0	0	0	0	0	0	120-130	0	43.02	100,100
140	0	0	0	0	0	0	0	0	130-140	0	43.02	100,100
150	0	0	0	0	0	0	0	0	140-150	0	43.02	100,100
160	0	0	0	0	0	0	0	0	150-160	0	43.02	100,100
170	0	0	0	0	0	0	0	0	160-170	0	43.02	100,100
180	0	0	0	0	0	0	0	0	170-180	0	43.02	100,100
DEG	LUMINOUS INTENSITY:cd									UNIT:lm		

Conical surface Flux(90deg): 25.191 lm

%lum = 58.6%  
%lamp = 58.6%

Conical surface Flux(120deg): 36.09 lm

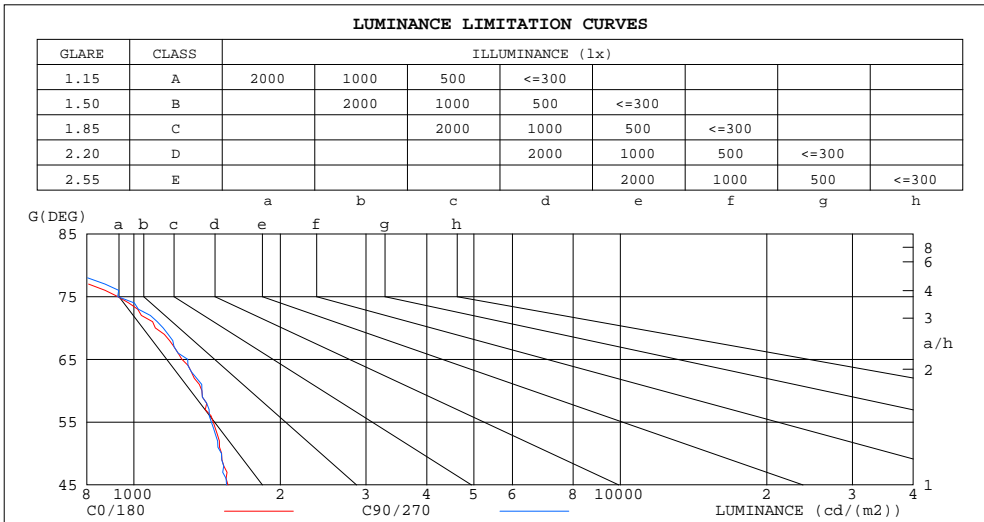
%lum = 83.9%  
%lamp = 83.9%

C Range: 0 - 360DEG  
C Interval: 22.5DEG  
Test Speed: HIGH  
Temperature:24.5DEG  
Operators:William  
Test Date:2018-09-19

$\gamma$  Range: 0 - 180DEG  
 $\gamma$  Interval: 1.0DEG  
Test System:EVERFINE GO-R5000\_V2 SYSTEM V2.0.366  
Humidity:65.7%  
Test Distance:26.000m [K=1.3825]  
Remarks:

LUMINANCE LIMITATION CURVES

Test:U:0V I:0A P:0W PF:0.0000 Freq:0Hz Lamp Flux:43.0159x1 lm		
NAME: Emergency Exit Luminaire	TYPE:LED	WEIGHT:N/A
SPEC.:N/A	DIM.:	SERIAL No.:N/A
MFR.: CETRAM LIMITED	SUR.:	Shielding Angle:N/A



LUMINANCE cd/(m2)		
G(DEG)	C0/180	C90/270
85	252	259
80	629	714
75	926	926
70	1107	1149
65	1255	1290
60	1380	1380
55	1456	1443
50	1514	1513
45	1561	1551

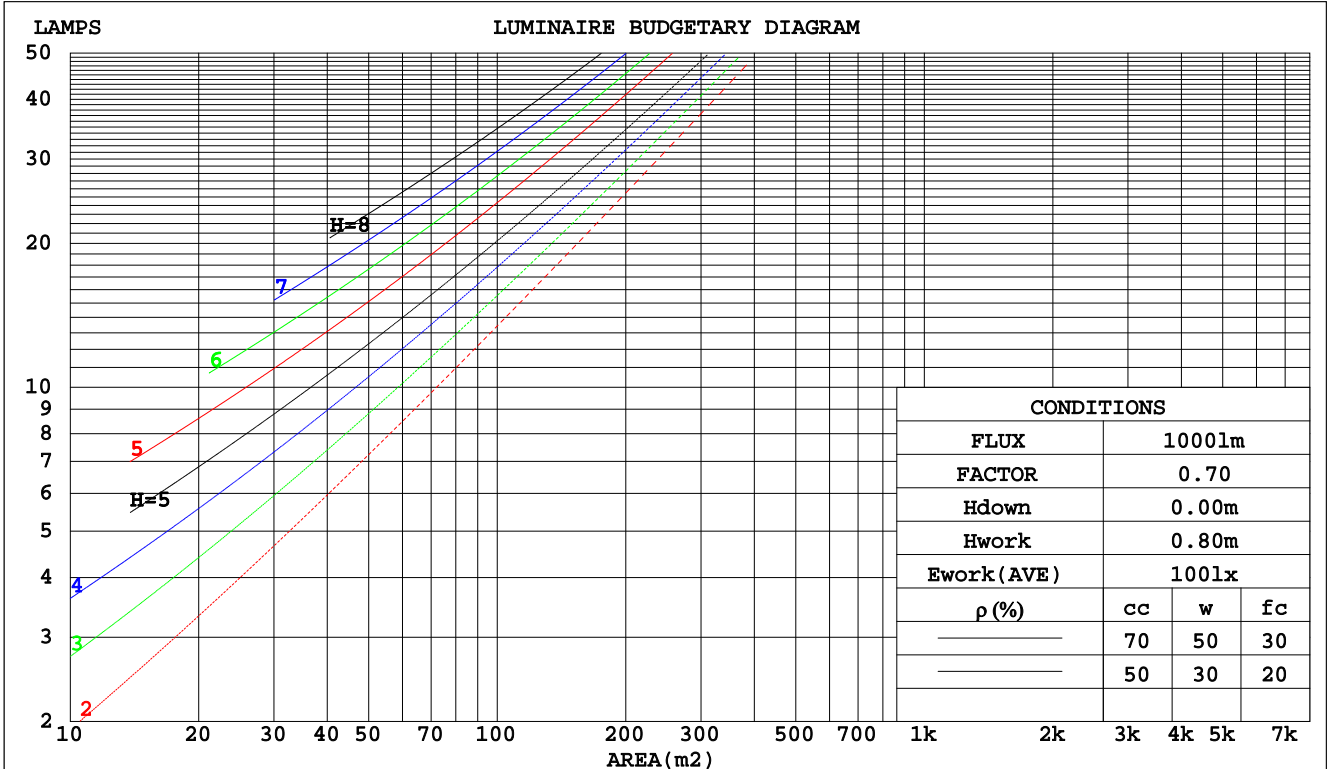
C Range: 0 - 360DEG  
 C Interval: 22.5DEG  
 Test Speed: HIGH  
 Temperature: 24.5DEG  
 Operators: William  
 Test Date: 2018-09-19

γ Range: 0 - 180DEG  
 γ Interval: 1.0DEG  
 Test System: EVERFINE GO-R5000\_V2 SYSTEM V2.0.366  
 Humidity: 65.7%  
 Test Distance: 26.000m [K=1.3825]  
 Remarks:

CU AND LUMINAIRE BUDGETARY ESTIMATE DIAGRAM

Test:U:0V I:0A P:0W PF:0.0000 Freq:0Hz Lamp Flux:43.0159x1 lm		
NAME: Emergency Exit Luminaire	TYPE:LED	WEIGHT:N/A
SPEC.:N/A	DIM.:	SERIAL No.:N/A
MFR.: CETRAM LIMITED	SUR.:	Shielding Angle:N/A

pcc	80%			70%			50%			30%			10%			0
	50%	30%	10%	50%	30%	10%	50%	30%	10%	50%	30%	10%	50%	30%	10%	
pw																0
pfc																0
RCR	RCR:Room Cavity Ratio      Coefficients of Utilization(CU)															
0.0	1.19	1.19	1.19	1.16	1.16	1.16	1.11	1.11	1.11	1.06	1.06	1.06	1.02	1.02	1.02	.00
1.0	1.06	1.02	.98	1.03	.90	.97	.99	.96	.94	.95	.93	.91	.92	.90	.88	.86
2.0	.93	.86	.81	.91	.85	.80	.87	.82	.78	.84	.80	.76	.81	.78	.75	.73
3.0	.82	.74	.68	.80	.73	.67	.77	.71	.66	.75	.69	.65	.72	.68	.64	.62
4.0	.73	.64	.58	.72	.64	.58	.69	.62	.57	.67	.61	.56	.65	.60	.55	.53
5.0	.65	.57	.50	.64	.56	.50	.62	.55	.49	.60	.54	.49	.58	.53	.48	.46
6.0	.59	.50	.44	.58	.50	.44	.56	.49	.43	.55	.48	.43	.53	.47	.43	.41
7.0	.53	.45	.39	.53	.45	.39	.51	.44	.39	.50	.43	.38	.48	.42	.38	.36
8.0	.49	.41	.35	.48	.40	.35	.47	.40	.35	.46	.39	.34	.44	.39	.34	.32
9.0	.45	.37	.31	.44	.37	.31	.43	.36	.31	.42	.36	.31	.41	.35	.31	.29
10.0	.41	.34	.29	.41	.33	.28	.40	.33	.28	.39	.33	.28	.38	.32	.28	.26



C Range: 0 - 360DEG  
 C Interval: 22.5DEG  
 Test Speed: HIGH  
 Temperature: 24.5DEG  
 Operators: William  
 Test Date: 2018-09-19

γ Range: 0 - 180DEG  
 γ Interval: 1.0DEG  
 Test System: EVERFINE GO-R5000\_V2 SYSTEM V2.0.366  
 Humidity: 65.7%  
 Test Distance: 26.000m [K=1.3825]  
 Remarks:

WEC AND CCEC

Test:U:0V I:0A P:0W PF:0.0000 Freq:0Hz Lamp Flux:43.0159x1 lm		
NAME: Emergency Exit Luminaire	TYPE:LED	WEIGHT:N/A
SPEC.:N/A	DIM.:	SERIAL No.:N/A
MFR.: CETRAM LIMITED	SUR.:	Shielding Angle:N/A

ρcc	80%			70%			50%			30%			10%			0
ρw	50%	30%	10%	50%	30%	10%	50%	30%	10%	50%	30%	10%	50%	30%	10%	0
ρfc	20%			20%			20%			20%			20%			0
RCR	RCR:Room Cavity Ratio						Wall Exitance Coefficients(WEC)									
0.0																
1.0	.278	.158	.050	.271	.155	.049	.258	.148	.047	.246	.142	.046	.235	.136	.044	
2.0	.270	.148	.045	.264	.145	.045	.252	.140	.044	.241	.135	.042	.232	.131	.041	
3.0	.254	.135	.040	.248	.133	.040	.238	.129	.039	.229	.125	.038	.220	.122	.038	
4.0	.237	.123	.036	.232	.121	.036	.223	.118	.035	.215	.115	.035	.207	.112	.034	
5.0	.221	.112	.033	.216	.111	.032	.208	.108	.032	.201	.106	.032	.194	.104	.031	
6.0	.206	.103	.030	.202	.102	.029	.195	.100	.029	.188	.098	.029	.182	.096	.028	
7.0	.192	.095	.027	.189	.094	.027	.183	.092	.027	.177	.091	.026	.171	.089	.026	
8.0	.180	.088	.025	.177	.087	.025	.172	.086	.025	.166	.084	.024	.161	.083	.024	
9.0	.170	.082	.023	.167	.081	.023	.162	.080	.023	.157	.079	.023	.152	.077	.022	
10.0	.160	.077	.021	.157	.076	.021	.153	.075	.021	.148	.074	.021	.144	.073	.021	

ρcc	80%			70%			50%			30%			10%			0
ρw	50%	30%	10%	50%	30%	10%	50%	30%	10%	50%	30%	10%	50%	30%	10%	0
ρfc	20%			20%			20%			20%			20%			0
RCR	RCR:Room Cavity Ratio						Ceiling Cavity Exitance Coefficients(CCEC)									
0.0	.190	.190	.190	.163	.163	.163	.111	.111	.111	.064	.064	.064	.020	.020	.020	
1.0	.178	.156	.137	.152	.134	.118	.104	.092	.081	.060	.053	.047	.019	.017	.015	
2.0	.169	.132	.101	.145	.114	.087	.099	.079	.061	.057	.046	.036	.018	.015	.012	
3.0	.161	.114	.077	.138	.099	.066	.095	.068	.047	.055	.040	.027	.018	.013	.009	
4.0	.154	.101	.060	.132	.087	.052	.091	.061	.037	.052	.036	.022	.017	.012	.007	
5.0	.147	.090	.049	.126	.078	.042	.087	.055	.030	.050	.032	.018	.016	.010	.006	
6.0	.140	.082	.040	.120	.071	.035	.083	.050	.025	.048	.029	.015	.015	.010	.005	
7.0	.133	.075	.034	.114	.065	.030	.079	.045	.021	.046	.027	.013	.015	.009	.004	
8.0	.127	.069	.029	.109	.060	.026	.076	.042	.018	.044	.025	.011	.014	.008	.004	
9.0	.121	.064	.026	.104	.056	.022	.072	.039	.016	.042	.023	.009	.014	.008	.003	
10.0	.115	.060	.023	.099	.052	.020	.069	.037	.014	.040	.022	.008	.013	.007	.003	

C Range: 0 - 360DEG  
 C Interval: 22.5DEG  
 Test Speed: HIGH  
 Temperature:24.5DEG  
 Operators:William  
 Test Date:2018-09-19

γ Range: 0 - 180DEG  
 γ Interval: 1.0DEG  
 Test System:EVERFINE GO-R5000\_V2 SYSTEM V2.0.366  
 Humidity:65.7%  
 Test Distance:26.000m [K=1.3825]  
 Remarks:

UGR(Unified Glare Rating) Table

Test:U:0V I:0A P:0W PF:0.0000 Freq:0Hz Lamp Flux:43.0159x1 lm										
NAME: Emergency Exit Luminaire					TYPE:LED			WEIGHT:N/A		
SPEC.:N/A					DIM.:			SERIAL No.:N/A		
MFR.: CETRAM LIMITED					SUR.:			Shielding Angle:N/A		
ceiling/cavity	0.7	0.7	0.5	0.5	0.3	0.7	0.7	0.5	0.5	0.3
walls	0.5	0.3	0.5	0.3	0.3	0.5	0.3	0.5	0.3	0.3
working plane	0.2	0.2	0.2	0.2	0.2	0.2	0.2	0.2	0.2	0.2
Room dimensions	Viewed crosswise					Viewed endwise				
x = 2H y = 2H	14.3	15.8	14.6	16.0	16.2	14.3	15.8	14.6	16.0	16.2
3H	15.6	16.9	15.9	17.2	17.4	15.6	16.9	15.9	17.2	17.4
4H	16.0	17.3	16.3	17.5	17.8	16.0	17.3	16.3	17.6	17.8
6H	16.2	17.4	16.5	17.6	17.9	16.3	17.5	16.6	17.7	18.0
8H	16.2	17.3	16.5	17.6	17.9	16.3	17.4	16.6	17.7	18.0
12H	16.1	17.3	16.5	17.5	17.8	16.3	17.4	16.6	17.7	18.0
4H 2H	14.9	16.1	15.2	16.4	16.6	14.8	16.1	15.1	16.3	16.6
3H	16.3	17.4	16.6	17.7	18.0	16.3	17.4	16.6	17.7	18.0
4H	16.8	17.8	17.1	18.1	18.4	16.8	17.8	17.2	18.1	18.5
6H	17.0	17.9	17.4	18.3	18.6	17.1	18.0	17.5	18.4	18.7
8H	17.1	17.9	17.5	18.2	18.6	17.2	18.0	17.6	18.4	18.7
12H	17.0	17.8	17.5	18.2	18.6	17.2	17.9	17.6	18.3	18.7
8H 4H	16.9	17.7	17.3	18.1	18.5	17.0	17.8	17.4	18.2	18.5
6H	17.3	17.9	17.7	18.4	18.8	17.4	18.0	17.8	18.4	18.9
8H	17.3	17.9	17.8	18.4	18.8	17.4	18.0	17.9	18.5	18.9
12H	17.3	17.8	17.8	18.3	18.8	17.5	18.0	18.0	18.4	18.9
12H 4H	16.9	17.7	17.3	18.0	18.4	16.9	17.7	17.4	18.1	18.5
6H	17.3	17.9	17.7	18.3	18.7	17.4	18.0	17.8	18.4	18.8
8H	17.3	17.9	17.8	18.3	18.8	17.5	18.0	17.9	18.4	18.9
Variations with the observer position at spacings:										
S = 1.0H	+ 0.2 / - 0.3					+ 0.2 / - 0.3				
1.5H	+ 0.2 / - 0.3					+ 0.2 / - 0.4				
2.0H	+ 0.3 / - 0.4					+ 0.3 / - 0.3				

CIE Pub.117, 43.02 lm Total Lamp Luminous Flux Corrected (8log(F/F0) = -10.9)

C Range: 0 - 360DEG  
 C Interval: 22.5DEG  
 Test Speed: HIGH  
 Temperature:24.5DEG  
 Operators:William  
 Test Date:2018-09-19

γ Range: 0 - 180DEG  
 γ Interval: 1.0DEG  
 Test System:EVERFINE GO-R5000\_V2 SYSTEM V2.0.366  
 Humidity:65.7%  
 Test Distance:26.000m [K=1.3825]  
 Remarks:

UTILIZATION FACTORS TABLE

Test:U:0V I:0A P:0W PF:0.0000 Freq:0Hz Lamp Flux:43.0159x1 lm		
NAME: Emergency Exit Luminaire	TYPE:LED	WEIGHT:N/A
SPEC.:N/A	DIM.:	SERIAL No.:N/A
MFR.: CETRAM LIMITED	SUR.:	Shielding Angle:N/A

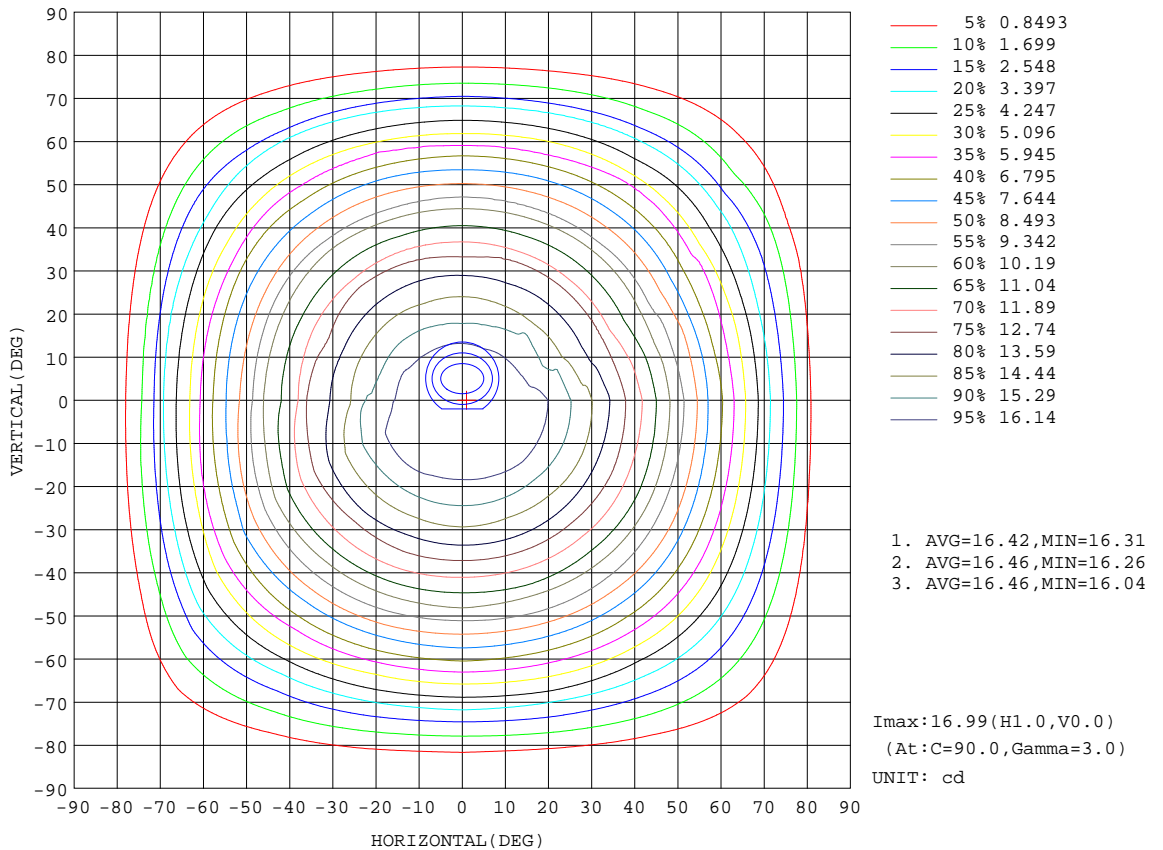
REFLECTANCE										
Ceiling	0.8	0.8	0.8	0.7	0.7	0.7	0.5	0.5	0.5	0
Walls	0.7	0.5	0.3	0.7	0.5	0.3	0.7	0.5	0.3	0
Working plane	0.2	0.2	0.2	0.2	0.2	0.2	0.2	0.2	0.2	0
ROOM INDEX	UTILIZATION FACTORS(PERCENT) $k(RI) \times RCR = 5$									
k = 0.60	60	49	42	59	48	42	58	48	42	35
0.80	70	59	52	69	59	52	67	58	51	45
1.00	79	68	61	77	68	61	75	69	60	54
1.25	86	76	69	84	75	69	82	74	68	61
1.50	91	81	75	89	80	74	86	79	73	66
2.00	97	89	83	95	88	83	92	86	81	74
2.50	101	94	88	99	92	87	95	90	85	77
3.00	104	98	93	102	96	92	98	93	89	81
4.00	108	103	98	105	101	97	101	97	94	86
5.00	110	106	102	108	104	100	103	100	97	88
ROOM INDEX	UF(total)									Direct
According to DIN EN 13032-2 2004			Suspended				SHRNOM = 1.25			

C Range: 0 - 360DEG  
 C Interval: 22.5DEG  
 Test Speed: HIGH  
 Temperature:24.5DEG  
 Operators:William  
 Test Date:2018-09-19

$\gamma$  Range: 0 - 180DEG  
 $\gamma$  Interval: 1.0DEG  
 Test System:EVERFINE GO-R5000\_V2 SYSTEM V2.0.366  
 Humidity:65.7%  
 Test Distance:26.000m [K=1.3825]  
 Remarks:

ISOCANDELA DIAGRAM

Test:U:0V I:0A P:0W PF:0.0000 Freq:0Hz Lamp Flux:43.0159x1 lm		
NAME: Emergency Exit Luminaire	TYPE:LED	WEIGHT:N/A
SPEC.:N/A	DIM.:	SERIAL No.:N/A
MFR.: CETRAM LIMITED	SUR.:	Shielding Angle:N/A



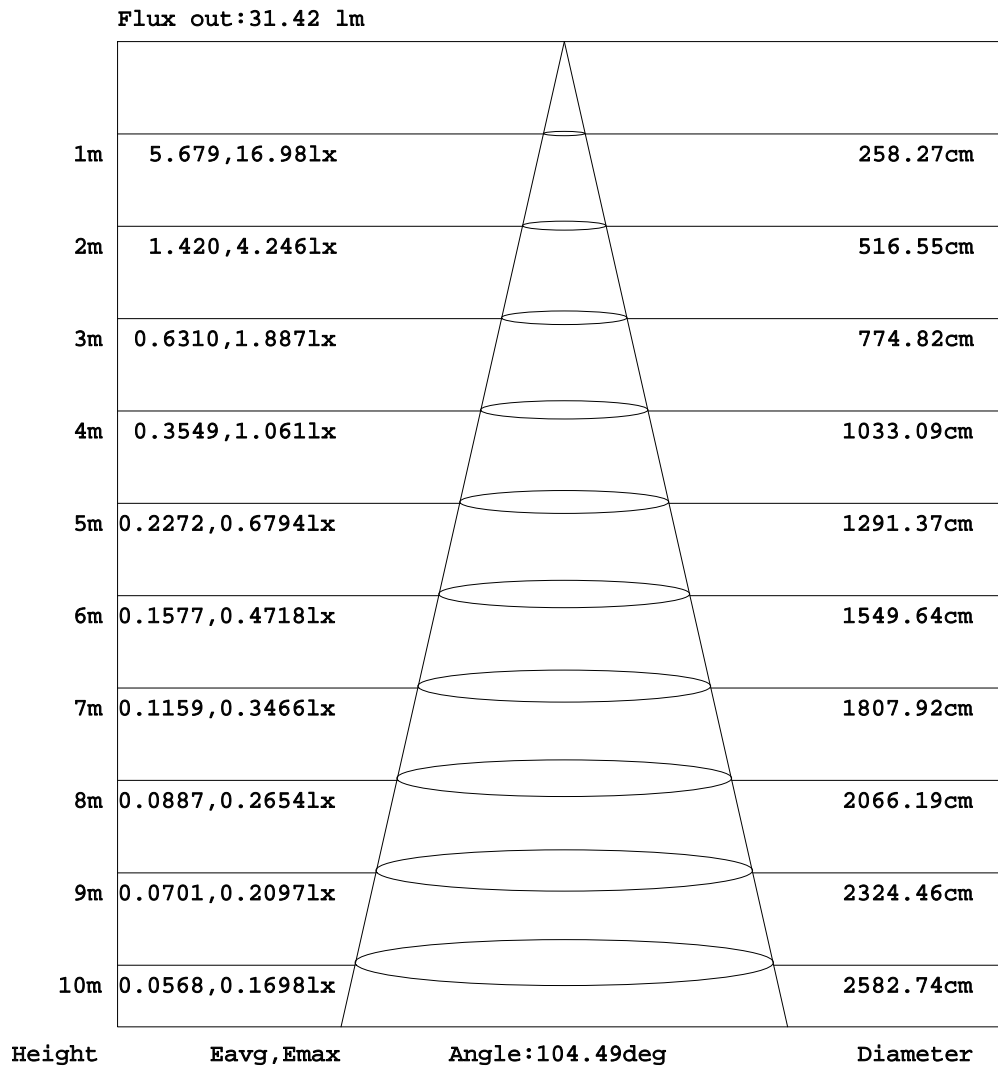
C Range: 0 - 360DEG  
 C Interval: 22.5DEG  
 Test Speed: HIGH  
 Temperature: 24.5DEG  
 Operators: William  
 Test Date: 2018-09-19

γ Range: 0 - 180DEG  
 γ Interval: 1.0DEG  
 Test System: EVERFINE GO-R5000\_V2 SYSTEM V2.0.366  
 Humidity: 65.7%  
 Test Distance: 26.000m [K=1.3825]  
 Remarks:



AAI Figure

Test:U:0V I:0A P:0W PF:0.0000 Freq:0Hz Lamp Flux:43.0159x1 lm		
NAME: Emergency Exit Luminaire	TYPE:LED	WEIGHT:N/A
SPEC.:N/A	DIM.:	SERIAL No.:N/A
MFR.: CETRAM LIMITED	SUR.:	Shielding Angle:N/A



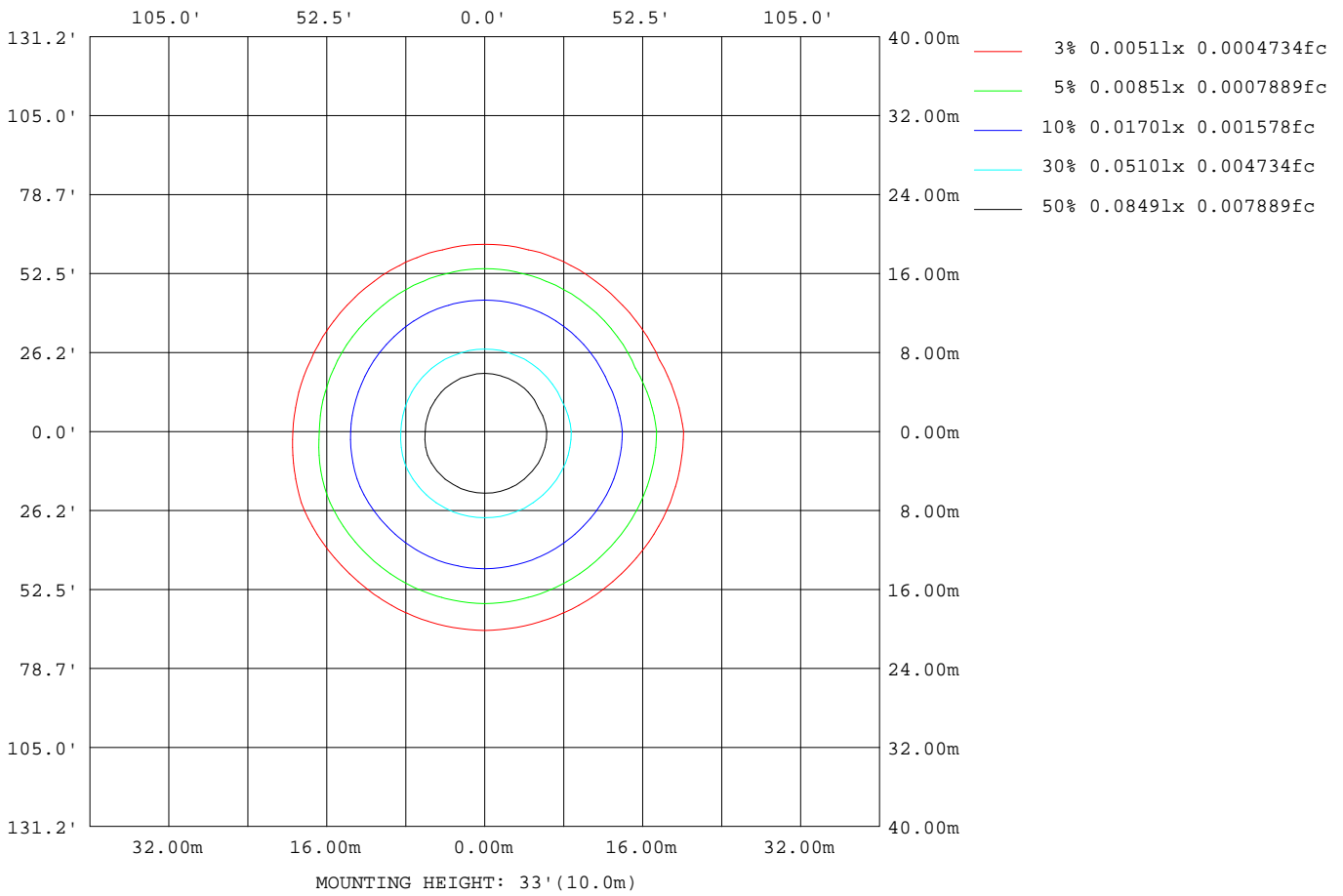
Note:The Curves indicate the illuminated area and the average illumination when the luminaire is at different distance.

C Range: 0 - 360DEG  
 C Interval: 22.5DEG  
 Test Speed: HIGH  
 Temperature:24.5DEG  
 Operators:William  
 Test Date:2018-09-19

γ Range: 0 - 180DEG  
 γ Interval: 1.0DEG  
 Test System:EVERFINE GO-R5000\_V2 SYSTEM V2.0.366  
 Humidity:65.7%  
 Test Distance:26.000m [K=1.3825]  
 Remarks:

ISOLUX DIAGRAM

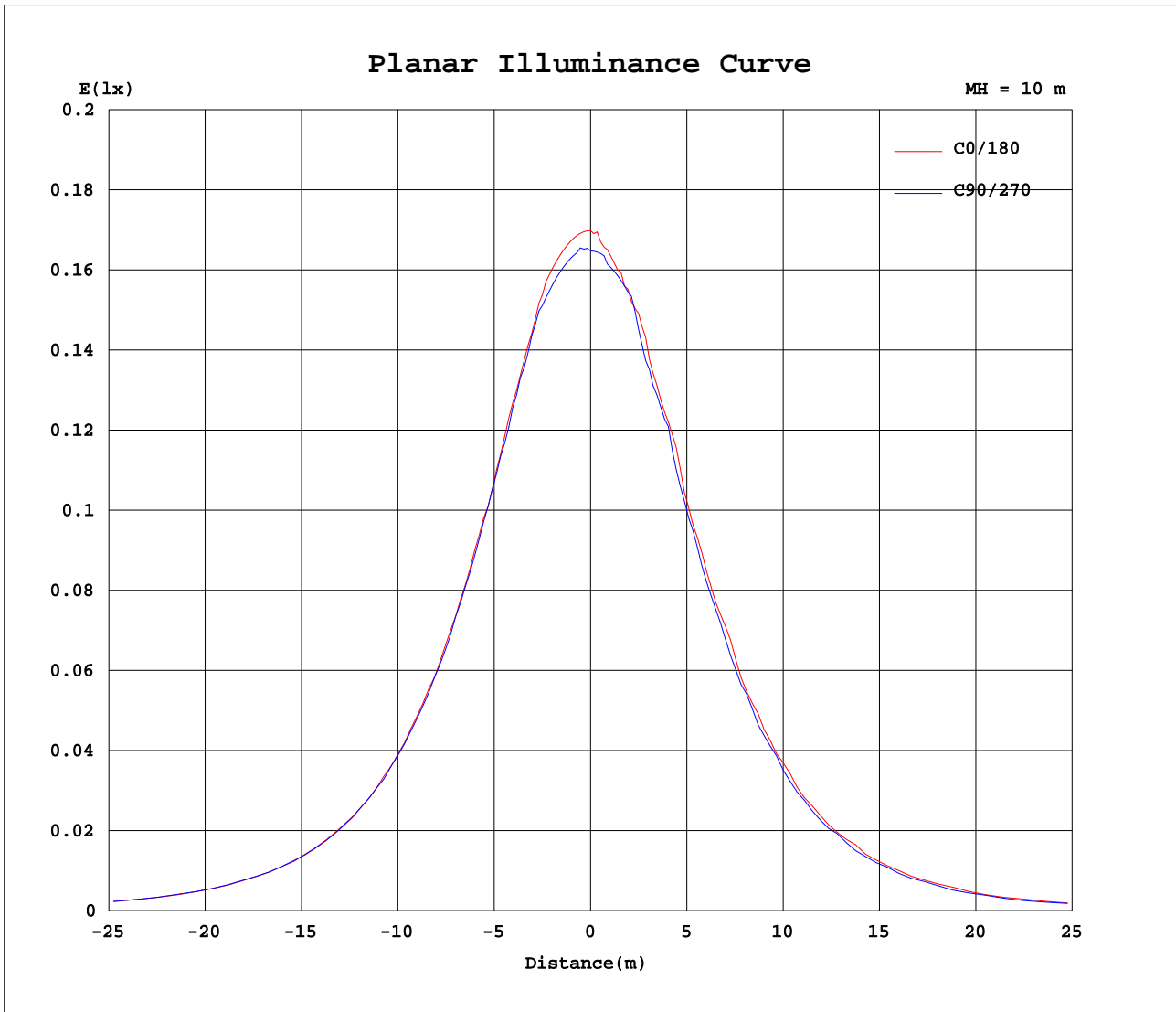
Test:U:0V I:0A P:0W PF:0.0000 Freq:0Hz Lamp Flux:43.0159x1 lm		
NAME: Emergency Exit Luminaire	TYPE:LED	WEIGHT:N/A
SPEC.:N/A	DIM.:	SERIAL No.:N/A
MFR.: CETRAM LIMITED	SUR.:	Shielding Angle:N/A



C Range: 0 - 360DEG  
 C Interval: 22.5DEG  
 Test Speed: HIGH  
 Temperature:24.5DEG  
 Operators:William  
 Test Date:2018-09-19

γ Range: 0 - 180DEG  
 γ Interval: 1.0DEG  
 Test System:EVERFINE GO-R5000\_V2 SYSTEM V2.0.366  
 Humidity:65.7%  
 Test Distance:26.000m [K=1.3825]  
 Remarks:

Planar Illuminance Curve



C Range: 0 - 360DEG  
C Interval: 22.5DEG  
Test Speed: HIGH  
Temperature: 24.5DEG  
Operators: William  
Test Date: 2018-09-19

$\gamma$  Range: 0 - 180DEG  
 $\gamma$  Interval: 1.0DEG  
Test System: EVERFINE GO-R5000\_V2 SYSTEM V2.0.366  
Humidity: 65.7%  
Test Distance: 26.000m [K=1.3825]  
Remarks:

LUMINOUS DISTRIBUTION INTENSITY DATA

Test:U:0V I:0A P:0W PF:0.0000 Freq:0Hz Lamp Flux:43.0159x1 lm		
NAME: Emergency Exit Luminaire	TYPE:LED	WEIGHT:N/A
SPEC.:N/A	DIM.:	SERIAL No.:N/A
MFR.: CETRAM LIMITED	SUR.:	Shielding Angle:N/A

Table--1

UNIT: cd

C(DEG) γ (DEG)	0	22.5	45	67.5	90	112.5	135	157.5	180	202.5	225	247.5	270	292.5	315	337.5			
0	16.7	16.7	16.7	16.7	16.7	16.7	16.7	16.7	16.7	16.7	16.7	16.7	16.7	16.7	16.7	16.7			
5	16.7	16.7	16.6	16.7	16.7	16.6	16.7	16.7	16.4	16.6	16.6	16.6	16.5	16.4	16.6	16.6			
10	16.7	16.7	16.6	16.7	16.7	16.6	16.7	16.7	16.0	16.2	16.3	16.4	16.5	16.4	16.4	16.4			
15	16.5	16.7	16.7	16.7	16.8	16.6	16.7	16.7	15.9	16.1	16.0	15.8	15.8	15.8	15.9	16.1			
20	15.8	16.0	16.1	16.1	16.2	16.1	16.1	16.1	15.1	15.1	15.3	15.3	15.3	15.2	15.3	15.3			
25	15.0	15.3	15.3	15.3	15.4	15.3	15.2	15.3	14.5	14.4	14.4	14.3	14.4	14.3	14.3	14.5			
30	14.2	14.4	14.4	14.4	14.5	14.4	14.3	14.4	13.5	13.4	13.4	13.4	13.4	13.4	13.4	13.7			
35	13.1	13.3	13.4	13.4	13.5	13.4	13.3	13.5	12.7	12.5	12.7	12.5	12.5	12.4	12.6	12.8			
40	12.1	12.2	12.1	12.1	12.3	12.3	12.1	12.1	11.3	11.3	11.3	11.2	11.4	11.2	11.3	11.4			
45	10.8	11.0	11.0	11.1	11.1	11.0	10.9	11.0	10.2	10.2	10.2	9.92	10.04	9.92	10.1	10.3			
50	9.54	9.66	9.67	9.71	9.83	9.72	9.60	9.68	8.82	8.65	8.58	8.61	8.65	8.61	8.57	8.72			
55	8.19	8.30	8.15	8.11	8.36	8.26	8.01	8.14	7.33	7.27	7.05	7.15	7.25	7.15	7.12	7.26			
60	6.76	6.78	6.76	6.87	6.97	6.87	6.70	6.69	6.04	5.76	5.89	5.98	5.93	5.84	5.95	5.96			
65	5.20	5.27	5.24	5.41	5.51	5.19	5.16	5.16	4.41	4.39	3.99	4.15	4.25	4.16	4.14	4.50			
70	3.71	3.76	3.64	3.87	3.97	3.88	3.57	3.72	2.91	2.66	2.47	2.63	2.71	2.62	2.61	2.83			
75	2.35	2.31	2.33	2.49	2.42	2.35	2.26	2.26	1.56	1.36	1.45	1.31	1.25	1.31	1.38	1.45			
80	1.07	1.16	1.16	1.25	1.25	1.24	1.10	1.09	0.28	0.14	0.07	0.14	0.07	0.07	0.07	0.21			
85	0.22	0.29	0.22	0.37	0.23	0.30	0.22	0.22	0.00	0.00	0.00	0.00	0.00	0.00	0.00	0.00			
90	0.00	0.00	0.00	0.00	0.00	0.00	0.00	0.00	0.00	0.00	0.00	0.00	0.00	0.00	0.00	0.00			
95	0.00	0.00	0.00	0.00	0.00	0.00	0.00	0.00	0.00	0.00	0.00	0.00	0.00	0.00	0.00	0.00			
100	0.00	0.00	0.00	0.00	0.00	0.00	0.00	0.00	0.00	0.00	0.00	0.00	0.00	0.00	0.00	0.00			
105	0.00	0.00	0.00	0.00	0.00	0.00	0.00	0.00	0.00	0.00	0.00	0.00	0.00	0.00	0.00	0.00			
110	0.00	0.00	0.00	0.00	0.00	0.00	0.00	0.00	0.00	0.00	0.00	0.00	0.00	0.00	0.00	0.00			
115	0.00	0.00	0.00	0.00	0.00	0.00	0.00	0.00	0.00	0.00	0.00	0.00	0.00	0.00	0.00	0.00			
120	0.00	0.00	0.00	0.00	0.00	0.00	0.00	0.00	0.00	0.00	0.00	0.00	0.00	0.00	0.00	0.00			
125	0.00	0.00	0.00	0.00	0.00	0.00	0.00	0.00	0.00	0.00	0.00	0.00	0.00	0.00	0.00	0.00			
130	0.00	0.00	0.00	0.00	0.00	0.00	0.00	0.00	0.00	0.00	0.00	0.00	0.00	0.00	0.00	0.00			
135	0.00	0.00	0.00	0.00	0.00	0.00	0.00	0.00	0.00	0.00	0.00	0.00	0.00	0.00	0.00	0.00			
140	0.00	0.00	0.00	0.00	0.00	0.00	0.00	0.00	0.00	0.00	0.00	0.00	0.00	0.00	0.00	0.00			
145	0.00	0.00	0.00	0.00	0.00	0.00	0.00	0.00	0.00	0.00	0.00	0.00	0.00	0.00	0.00	0.00			
150	0.00	0.00	0.00	0.00	0.00	0.00	0.00	0.00	0.00	0.00	0.00	0.00	0.00	0.00	0.00	0.00			
155	0.00	0.00	0.00	0.00	0.00	0.00	0.00	0.00	0.00	0.00	0.00	0.00	0.00	0.00	0.00	0.00			
160	0.00	0.00	0.00	0.00	0.00	0.00	0.00	0.00	0.00	0.00	0.00	0.00	0.00	0.00	0.00	0.00			
165	0.00	0.00	0.00	0.00	0.00	0.00	0.00	0.00	0.00	0.00	0.00	0.00	0.00	0.00	0.00	0.00			
170	0.00	0.00	0.00	0.00	0.00	0.00	0.00	0.00	0.00	0.00	0.00	0.00	0.00	0.00	0.00	0.00			
175	0.00	0.00	0.00	0.00	0.00	0.00	0.00	0.00	0.00	0.00	0.00	0.00	0.00	0.00	0.00	0.00			
180	0.00	0.00	0.00	0.00	0.00	0.00	0.00	0.00	0.00	0.00	0.00	0.00	0.00	0.00	0.00	0.00			

C Range: 0 - 360DEG  
 C Interval: 22.5DEG  
 Test Speed: HIGH  
 Temperature:24.5DEG  
 Operators:William  
 Test Date:2018-09-19

γ Range: 0 - 180DEG  
 γ Interval: 1.0DEG  
 Test System:EVERFINE GO-R5000\_V2 SYSTEM V2.0.366  
 Humidity:65.7%  
 Test Distance:26.000m [K=1.3825]  
 Remarks: