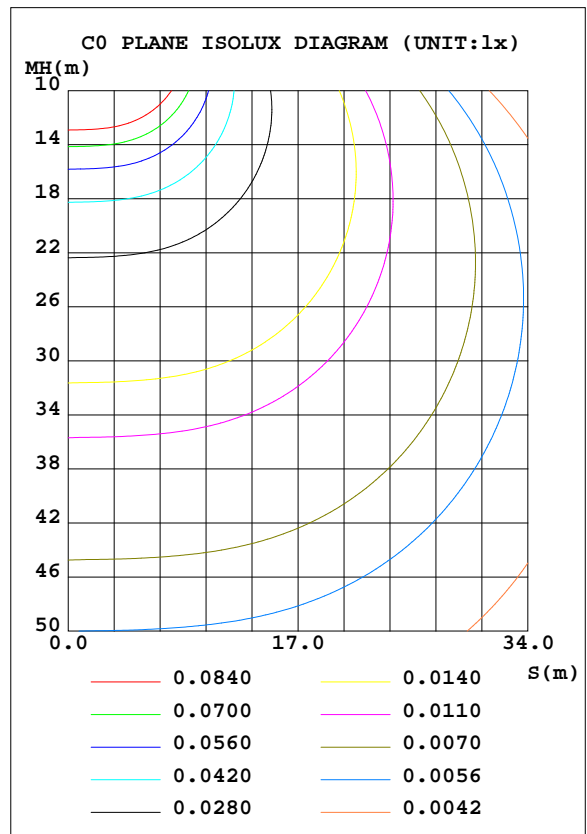
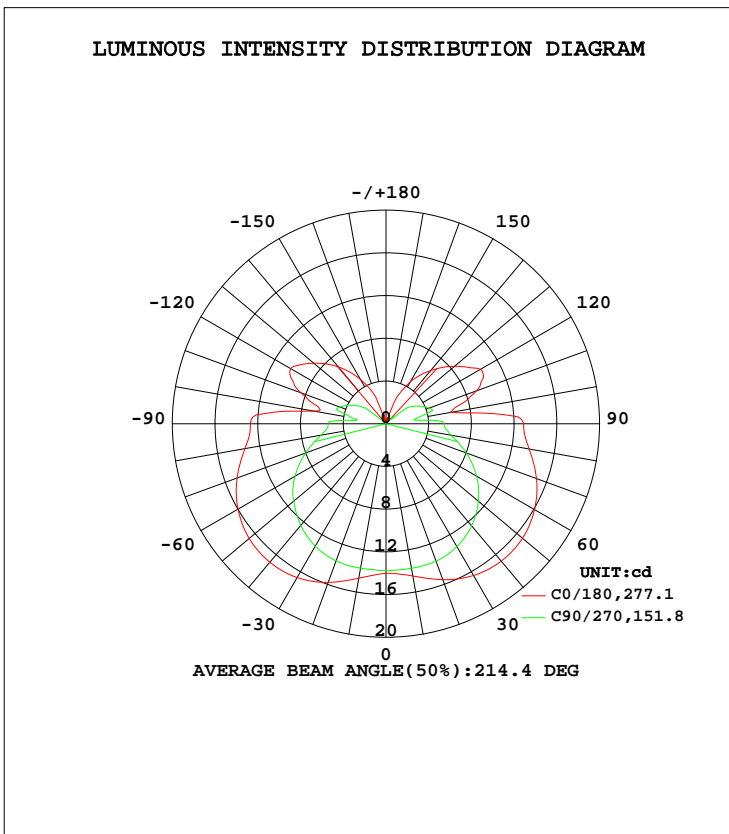


LUMINAIRE PHOTOMETRIC TEST REPORT

Test:U:0V I:0A P:0W PF:0 Freq:0Hz Lamp Flux:115.32x1 lm		
NAME: T	TYPE:LED	WEIGHT:N/A
SPEC.:N/A	DIM.:	SERIAL No.:N/A
MFR.:	SUR.:	Shielding Angle:N/A

DATA OF LAMP		PHOTOMETRIC DATA			
MODEL	1	I _{max} (cd)	16.93	S/MH(C0/180)	1.79
NOMINAL POWER(W)		LOR(%)	100.0	S/MH(C90/270)	1.44
RATED VOLTAGE(V)		TOTAL FLUX(lm)	115.32	η UP, DN(C0-180)	13.9, 36.1
NOMINAL FLUX(lm)	115.32	CIE CLASS	SEMI-D.	η UP, DN(C180-360)	14.1, 36.0
LAMPS INSIDE	1	η up(%)	28.0	CIBSE SHR NOM	1.75
TEST VOLTAGE(V)	120	η down(%)	72.0	CIBSE SHR MAX	1.75



C Range: 0 - 360DEG
 C Interval: 22.5DEG
 Test Speed: HIGH
 Temperature:24.5DEG
 Operators:Seth
 Test Date:2017-04-19

γ Range: 0 - 180DEG
 γ Interval: 1.0DEG
 Test System:EVERFINE GO-R5000_V2 SYSTEM V2.0.352
 Humidity:65.7%
 Test Distance:2.104m [K=1.0000]
 Remarks:

ZONAL FLUX DIAGRAM

ZONAL FLUX DIAGRAM:

γ	C0	C45	C90	C135	C180	C225	C270	C315	γ	Φ zone	Φ total	%lum, lamp
10	14.47	14.22	13.74	13.84	14.68	14.27	13.73	13.95	0- 10	1.333	1.333	1.16,1.16
20	15.53	14.92	13.69	14.46	15.80	14.95	13.66	14.68	10- 20	4.088	5.421	4.7,4.7
30	16.40	15.56	13.28	15.03	16.63	15.55	13.24	15.31	20- 30	6.915	12.34	10.7,10.7
40	16.79	15.84	12.47	15.26	16.93	15.75	12.42	15.52	30- 40	9.514	21.85	18.9,18.9
50	16.68	15.65	11.30	15.02	16.71	15.46	11.25	15.22	40- 50	11.55	33.40	29,29
60	16.06	14.97	9.785	14.31	16.00	14.69	9.843	14.42	50- 60	12.79	46.20	40.1,40.1
70	14.99	13.82	8.002	13.14	14.84	13.45	8.014	13.17	60- 70	13.06	59.26	51.4,51.4
80	13.61	12.41	6.149	11.71	13.41	11.97	6.169	11.72	70- 80	12.40	71.66	62.1,62.1
90	12.87	11.58	5.409	10.90	12.69	11.19	5.422	11.04	80- 90	11.42	83.08	72,72
100	6.139	4.054	2.905	3.799	6.848	4.197	3.226	3.817	90-100	8.374	91.46	79.3,79.3
110	9.021	5.840	4.286	6.308	8.447	5.579	4.576	6.590	100-110	5.837	97.29	84.4,84.4
120	10.20	6.406	3.324	6.151	10.31	6.462	3.470	6.339	110-120	6.603	103.9	90.1,90.1
130	8.376	5.418	0.8640	5.305	8.834	5.581	0.7468	5.414	120-130	5.412	109.3	94.8,94.8
140	6.520	3.980	0.5221	3.895	6.956	4.219	0.3869	3.876	130-140	3.397	112.7	97.7,97.7
150	4.483	2.356	0.0141	2.334	4.812	3.007	0	1.395	140-150	1.852	114.6	99.3,99.3
160	1.461	0.4094	0	0.6586	1.376	0.0357	0.0265	0.3840	150-160	0.6766	115.2	99.9,99.9
170	0.2800	0.1105	0	0.0791	0.3563	0.3132	0	0.0113	160-170	0.0834	115.3	100,100
180	0	0	0	0	0	0	0	0	170-180	0.0047	115.3	100,100
DEG	LUMINOUS INTENSITY:cd									UNIT:lm		

Conical surface Flux(90deg): 27.418 lm

%lum = 23.8%
%lamp = 23.8%

Conical surface Flux(120deg): 46.195 lm

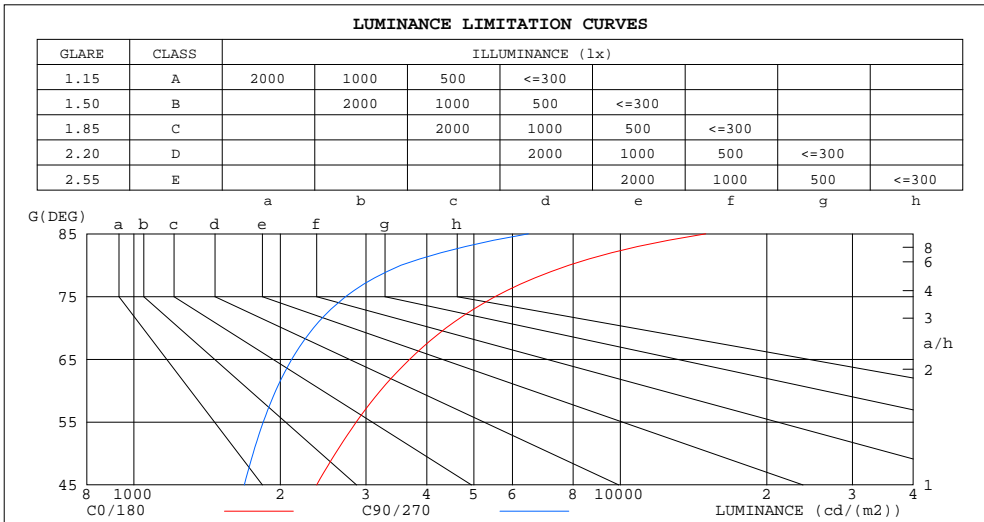
%lum = 40.1%
%lamp = 40.1%

C Range: 0 - 360DEG
C Interval: 22.5DEG
Test Speed: HIGH
Temperature:24.5DEG
Operators:Seth
Test Date:2017-04-19

γ Range: 0 - 180DEG
γ Interval: 1.0DEG
Test System:EVERFINE GO-R5000_V2 SYSTEM V2.0.352
Humidity:65.7%
Test Distance:2.104m [K=1.0000]
Remarks:

LUMINANCE LIMITATION CURVES

Test:U:0V I:0A P:0W PF:0 Freq:0Hz Lamp Flux:115.32x1 lm		
NAME: T	TYPE:LED	WEIGHT:N/A
SPEC.:N/A	DIM.:	SERIAL No.:N/A
MFR.:	SUR.:	Shielding Angle:N/A



LUMINANCE cd/(m2)		
G(DEG)	C0/180	C90/270
85	14980	6470
80	7840	3541
75	5530	2726
70	4383	2340
65	3688	2112
60	3211	1957
55	2864	1845
50	2595	1758
45	2376	1687

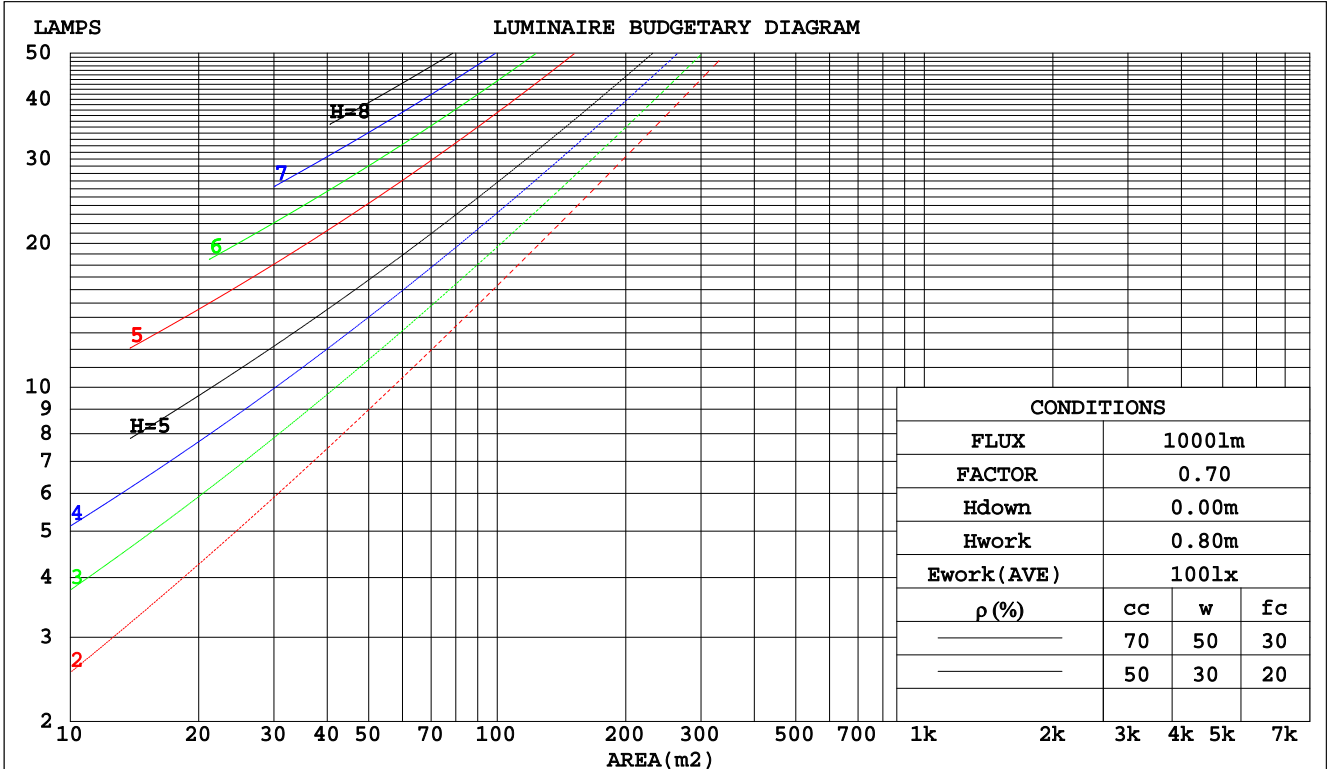
C Range: 0 - 360DEG
 C Interval: 22.5DEG
 Test Speed: HIGH
 Temperature:24.5DEG
 Operators:Seth
 Test Date:2017-04-19

γ Range: 0 - 180DEG
 γ Interval: 1.0DEG
 Test System:EVERFINE GO-R5000_V2 SYSTEM V2.0.352
 Humidity:65.7%
 Test Distance:2.104m [K=1.0000]
 Remarks:

CU AND LUMINAIRE BUDGETARY ESTIMATE DIAGRAM

Test:U:0V I:0A P:0W PF:0 Freq:0Hz Lamp Flux:115.32x1 lm		
NAME: T	TYPE:LED	WEIGHT:N/A
SPEC.:N/A	DIM.:	SERIAL No.:N/A
MFR.:	SUR.:	Shielding Angle:N/A

pcc	80%			70%			50%			30%			10%			0
	50%	30%	10%	50%	30%	10%	50%	30%	10%	50%	30%	10%	50%	30%	10%	0
pw																
pfc	20%			20%			20%			20%			20%			0
RCR	RCR:Room Cavity Ratio						Coefficients of Utilization(CU)									
0.0	1.12	1.12	1.12	1.07	1.07	1.07	.96	.96	.96	.86	.86	.86	.76	.76	.76	.72
1.0	.91	.85	.80	.86	.81	.76	.77	.72	.69	.68	.65	.62	.60	.57	.55	.51
2.0	.77	.69	.62	.73	.65	.59	.64	.58	.53	.57	.52	.48	.50	.46	.43	.39
3.0	.66	.57	.49	.62	.54	.47	.55	.48	.43	.49	.43	.38	.43	.38	.34	.31
4.0	.58	.48	.40	.54	.45	.39	.48	.41	.35	.43	.36	.32	.37	.32	.28	.25
5.0	.51	.41	.34	.48	.39	.32	.43	.35	.29	.38	.31	.26	.33	.28	.24	.21
6.0	.45	.36	.29	.43	.34	.28	.38	.31	.25	.34	.27	.23	.30	.24	.20	.18
7.0	.41	.31	.25	.38	.30	.24	.34	.27	.22	.30	.24	.20	.27	.22	.18	.15
8.0	.37	.28	.22	.35	.27	.21	.31	.24	.19	.28	.22	.17	.24	.19	.15	.13
9.0	.33	.25	.19	.32	.24	.18	.28	.22	.17	.25	.19	.15	.23	.17	.14	.12
10.0	.31	.22	.17	.29	.21	.16	.26	.20	.15	.23	.18	.14	.21	.16	.12	.10



C Range: 0 - 360DEG
 C Interval: 22.5DEG
 Test Speed: HIGH
 Temperature:24.5DEG
 Operators:Seth
 Test Date:2017-04-19

γ Range: 0 - 180DEG
 γ Interval: 1.0DEG
 Test System:EVERFINE GO-R5000_V2 SYSTEM V2.0.352
 Humidity:65.7%
 Test Distance:2.104m [K=1.0000]
 Remarks:

WEC AND CCEC

Test:U:0V I:0A P:0W PF:0 Freq:0Hz Lamp Flux:115.32x1 lm		
NAME: T	TYPE:LED	WEIGHT:N/A
SPEC.:N/A	DIM.:	SERIAL No.:N/A
MFR.:	SUR.:	Shielding Angle:N/A

ρcc	80%			70%			50%			30%			10%			0
ρw	50%	30%	10%	50%	30%	10%	50%	30%	10%	50%	30%	10%	50%	30%	10%	0
ρfc	20%			20%			20%			20%			20%			0
RCR	RCR:Room Cavity Ratio						Wall Exitance Coefficients(WEC)									
0.0																
1.0	.422	.240	.076	.406	.232	.074	.377	.216	.069	.349	.202	.065	.324	.188	.061	
2.0	.355	.195	.060	.341	.188	.058	.314	.175	.054	.289	.162	.051	.266	.151	.047	
3.0	.311	.165	.050	.298	.159	.048	.273	.148	.045	.251	.137	.042	.230	.127	.039	
4.0	.277	.144	.042	.265	.139	.041	.243	.129	.038	.222	.119	.036	.203	.110	.034	
5.0	.250	.127	.037	.239	.123	.036	.219	.114	.034	.200	.105	.031	.182	.097	.029	
6.0	.228	.114	.033	.218	.110	.032	.199	.102	.030	.182	.094	.028	.165	.087	.026	
7.0	.209	.103	.029	.200	.100	.028	.183	.092	.027	.167	.085	.025	.152	.079	.023	
8.0	.193	.094	.027	.185	.091	.026	.169	.084	.024	.154	.078	.023	.140	.072	.021	
9.0	.180	.087	.024	.172	.084	.023	.157	.078	.022	.143	.072	.021	.130	.066	.019	
10.0	.168	.080	.022	.160	.077	.022	.147	.072	.020	.134	.067	.019	.122	.061	.018	

ρcc	80%			70%			50%			30%			10%			0
ρw	50%	30%	10%	50%	30%	10%	50%	30%	10%	50%	30%	10%	50%	30%	10%	0
ρfc	20%			20%			20%			20%			20%			0
RCR	RCR:Room Cavity Ratio						Ceiling Cavity Exitance Coefficients(CCEC)									
0.0	.403	.403	.403	.345	.345	.345	.235	.235	.235	.135	.135	.135	.043	.043	.043	
1.0	.403	.370	.340	.345	.317	.293	.236	.218	.203	.136	.126	.118	.043	.041	.038	
2.0	.397	.348	.307	.340	.299	.265	.233	.207	.185	.134	.120	.108	.043	.039	.035	
3.0	.390	.332	.286	.334	.286	.248	.229	.199	.174	.132	.116	.102	.043	.038	.034	
4.0	.382	.320	.272	.328	.276	.237	.225	.193	.167	.130	.113	.099	.042	.037	.032	
5.0	.374	.310	.263	.321	.269	.229	.221	.188	.162	.128	.110	.096	.041	.036	.032	
6.0	.367	.303	.257	.315	.262	.224	.217	.184	.158	.126	.108	.094	.041	.035	.031	
7.0	.360	.296	.252	.309	.257	.220	.214	.180	.156	.124	.106	.093	.040	.035	.031	
8.0	.353	.291	.248	.304	.252	.217	.210	.177	.154	.122	.105	.092	.040	.034	.030	
9.0	.346	.286	.246	.298	.248	.214	.207	.175	.152	.120	.103	.091	.039	.034	.030	
10.0	.340	.282	.243	.293	.245	.212	.204	.172	.151	.119	.102	.090	.039	.033	.030	

C Range: 0 - 360DEG
 C Interval: 22.5DEG
 Test Speed: HIGH
 Temperature:24.5DEG
 Operators:Seth
 Test Date:2017-04-19

γ Range: 0 - 180DEG
 γ Interval: 1.0DEG
 Test System:EVERFINE GO-R5000_V2 SYSTEM V2.0.352
 Humidity:65.7%
 Test Distance:2.104m [K=1.0000]
 Remarks:

UGR(Unified Glare Rating) Table

Test:U:0V I:0A P:0W PF:0 Freq:0Hz Lamp Flux:115.32x1 lm										
NAME: T					TYPE:LED			WEIGHT:N/A		
SPEC.:N/A					DIM.:			SERIAL No.:N/A		
MFR.:					SUR.:			Shielding Angle:N/A		
ceiling/cavity	0.7	0.7	0.5	0.5	0.3	0.7	0.7	0.5	0.5	0.3
walls	0.5	0.3	0.5	0.3	0.3	0.5	0.3	0.5	0.3	0.3
working plane	0.2	0.2	0.2	0.2	0.2	0.2	0.2	0.2	0.2	0.2
Room dimensions	Viewed crosswise					Viewed endwise				
x = 2H y = 2H	15.5	16.8	16.1	17.4	18.2	13.5	14.8	14.1	15.4	16.2
3H	18.4	19.6	19.1	20.3	21.1	15.7	16.9	16.4	17.6	18.4
4H	20.0	21.2	20.7	21.9	22.7	16.9	18.1	17.6	18.8	19.6
6H	21.8	22.9	22.5	23.6	24.4	18.1	19.2	18.8	19.9	20.8
8H	22.8	23.8	23.5	24.5	25.4	18.8	19.9	19.5	20.6	21.4
12H	23.9	24.9	24.6	25.7	26.5	19.6	20.6	20.3	21.3	22.2
4H 2H	16.2	17.4	16.9	18.1	18.9	14.9	16.1	15.6	16.8	17.6
3H	19.4	20.4	20.1	21.1	22.0	17.4	18.4	18.1	19.1	20.0
4H	21.2	22.1	21.9	22.9	23.8	18.7	19.6	19.4	20.4	21.3
6H	23.2	24.0	23.9	24.8	25.7	20.1	20.9	20.8	21.7	22.6
8H	24.2	25.0	25.0	25.8	26.8	20.8	21.6	21.6	22.4	23.3
12H	25.5	26.2	26.3	27.0	28.0	21.7	22.4	22.4	23.2	24.1
8H 4H	21.7	22.5	22.5	23.3	24.2	19.8	20.6	20.6	21.4	22.4
6H	24.0	24.7	24.8	25.5	26.5	21.6	22.2	22.4	23.0	24.0
8H	25.3	25.9	26.1	26.7	27.7	22.5	23.1	23.3	23.9	24.9
12H	26.8	27.3	27.6	28.2	29.2	23.5	24.1	24.4	24.9	25.9
12H 4H	21.8	22.5	22.6	23.3	24.3	20.2	20.9	21.0	21.7	22.7
6H	24.2	24.8	25.0	25.6	26.6	22.1	22.7	22.9	23.5	24.5
8H	25.6	26.2	26.5	27.0	28.0	23.2	23.7	24.0	24.6	25.6
Variations with the observer position at spacings:										
S = 1.0H	+ 0.1 / - 0.1					+ 0.1 / - 0.1				
1.5H	+ 0.2 / - 0.3					+ 0.2 / - 0.3				
2.0H	+ 0.3 / - 0.4					+ 0.3 / - 0.5				

CIE Pub.117 Corrected 115.3 lm Total Lamp Luminous Flux.(8log(F/F0) = -7.5)

C Range: 0 - 360DEG
 C Interval: 22.5DEG
 Test Speed: HIGH
 Temperature:24.5DEG
 Operators:Seth
 Test Date:2017-04-19

γ Range: 0 - 180DEG
 γ Interval: 1.0DEG
 Test System:EVERFINE GO-R5000_V2 SYSTEM V2.0.352
 Humidity:65.7%
 Test Distance:2.104m [K=1.0000]
 Remarks:

UTILIZATION FACTORS TABLE

Test:U:0V I:0A P:0W PF:0 Freq:0Hz Lamp Flux:115.32x1 lm		
NAME: T	TYPE:LED	WEIGHT:N/A
SPEC.:N/A	DIM.:	SERIAL No.:N/A
MFR.:	SUR.:	Shielding Angle:N/A

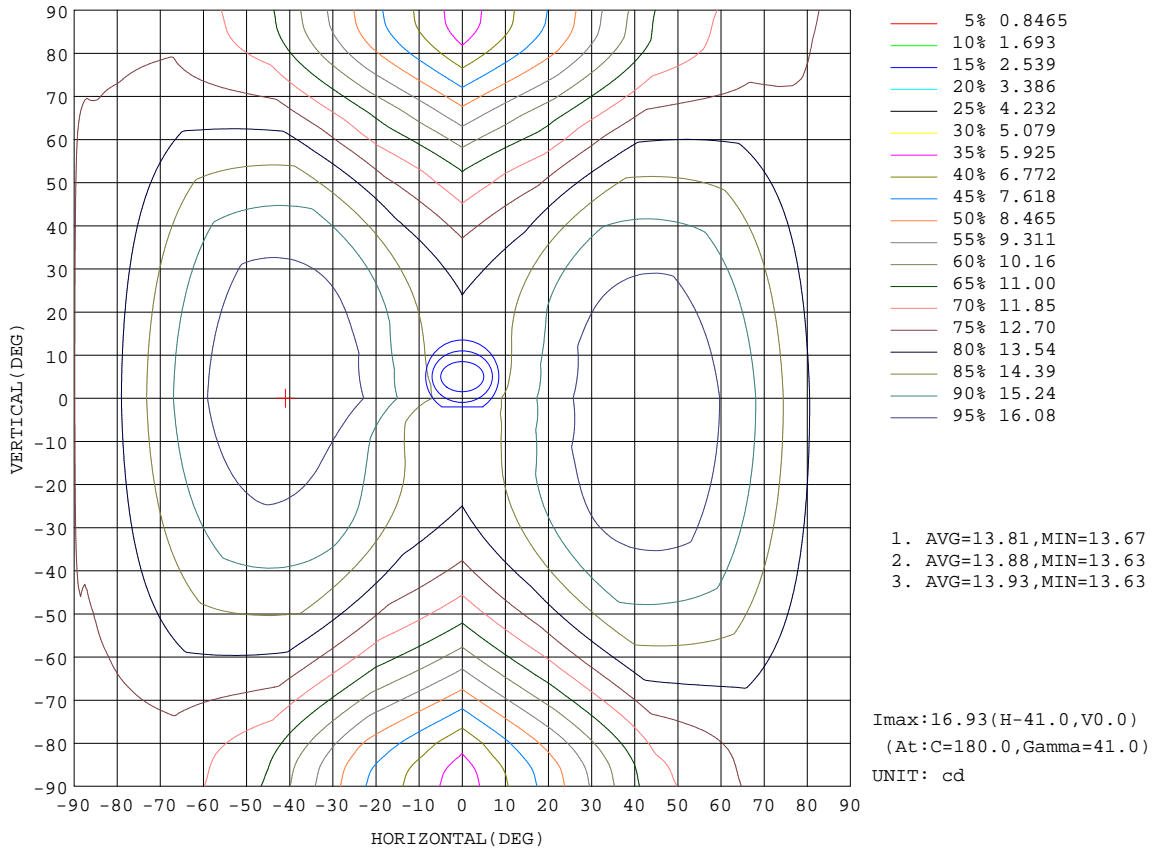
REFLECTANCE										
Ceiling	0.8	0.8	0.8	0.7	0.7	0.7	0.5	0.5	0.5	0
Walls	0.7	0.5	0.3	0.7	0.5	0.3	0.7	0.5	0.3	0
Working plane	0.2	0.2	0.2	0.2	0.2	0.2	0.2	0.2	0.2	0
ROOM INDEX	UTILIZATION FACTORS(PERCENT) $k(RI) \times RCR = 5$									
k = 0.60	42	29	22	41	28	21	38	27	21	13
0.80	51	37	29	49	36	28	45	34	27	18
1.00	58	44	35	56	43	35	51	43	33	23
1.25	65	52	42	62	50	41	57	46	39	28
1.50	71	57	48	67	55	46	61	51	44	31
2.00	78	66	57	74	63	55	67	58	51	37
2.50	83	72	63	79	69	60	71	63	56	41
3.00	87	77	68	83	73	66	74	67	60	44
4.00	92	83	76	87	79	73	78	72	66	49
5.00	95	88	81	90	83	77	81	75	71	52
ROOM INDEX	UF(total)									Direct
According to DIN EN 13032-2 2004			Suspended				SHRNOM = 1.25			

C Range: 0 - 360DEG
 C Interval: 22.5DEG
 Test Speed: HIGH
 Temperature:24.5DEG
 Operators:Seth
 Test Date:2017-04-19

γ Range: 0 - 180DEG
 γ Interval: 1.0DEG
 Test System:EVERFINE GO-R5000_V2 SYSTEM V2.0.352
 Humidity:65.7%
 Test Distance:2.104m [K=1.0000]
 Remarks:

ISOCANDELA DIAGRAM

Test:U:0V I:0A P:0W PF:0 Freq:0Hz Lamp Flux:115.32x1 lm		
NAME: T	TYPE:LED	WEIGHT:N/A
SPEC.:N/A	DIM.:	SERIAL No.:N/A
MFR.:	SUR.:	Shielding Angle:N/A

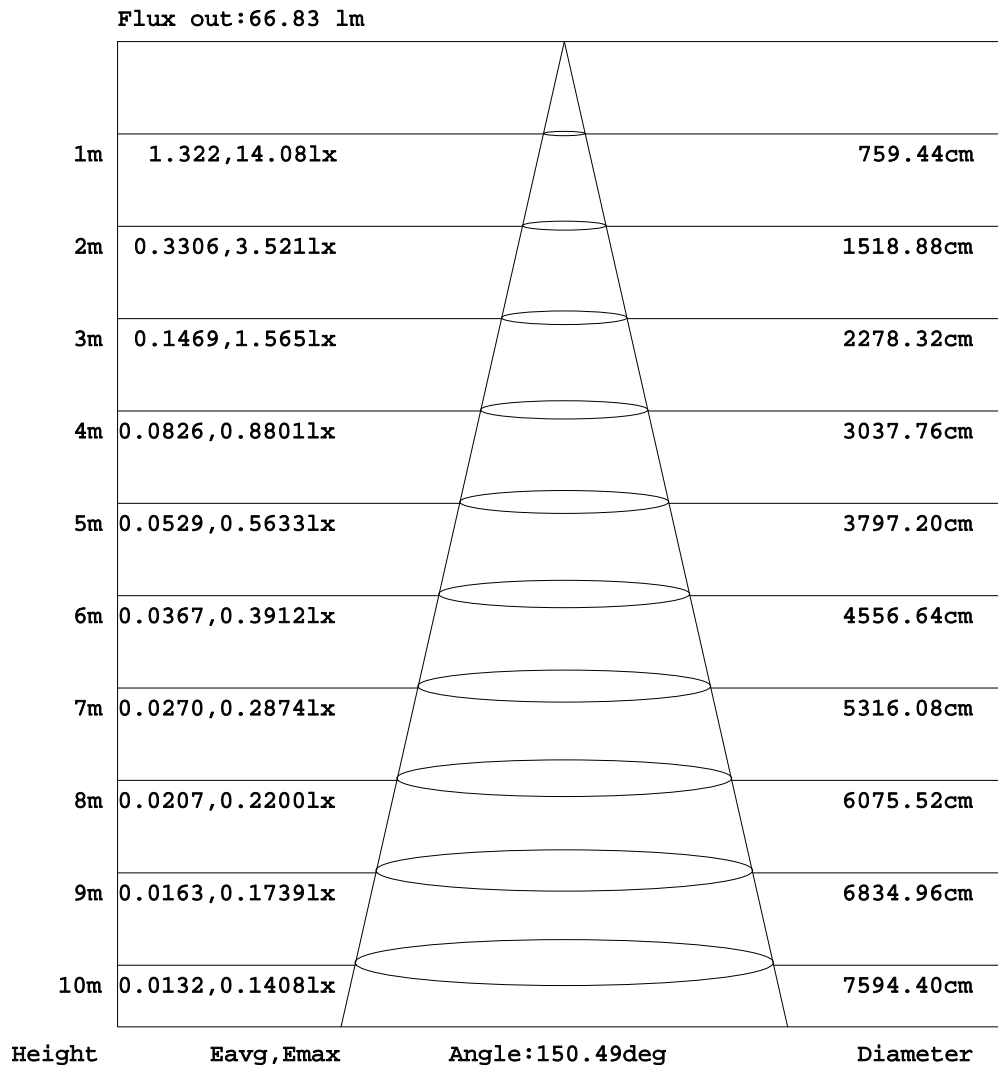


C Range: 0 - 360DEG
 C Interval: 22.5DEG
 Test Speed: HIGH
 Temperature: 24.5DEG
 Operators: Seth
 Test Date: 2017-04-19

γ Range: 0 - 180DEG
 γ Interval: 1.0DEG
 Test System: EVERFINE GO-R5000_V2 SYSTEM V2.0.352
 Humidity: 65.7%
 Test Distance: 2.104m [K=1.0000]
 Remarks:

AAI Figure

Test:U:0V I:0A P:0W PF:0 Freq:0Hz Lamp Flux:115.32x1 lm		
NAME: T	TYPE:LED	WEIGHT:N/A
SPEC.:N/A	DIM.:	SERIAL No.:N/A
MFR.:	SUR.:	Shielding Angle:N/A



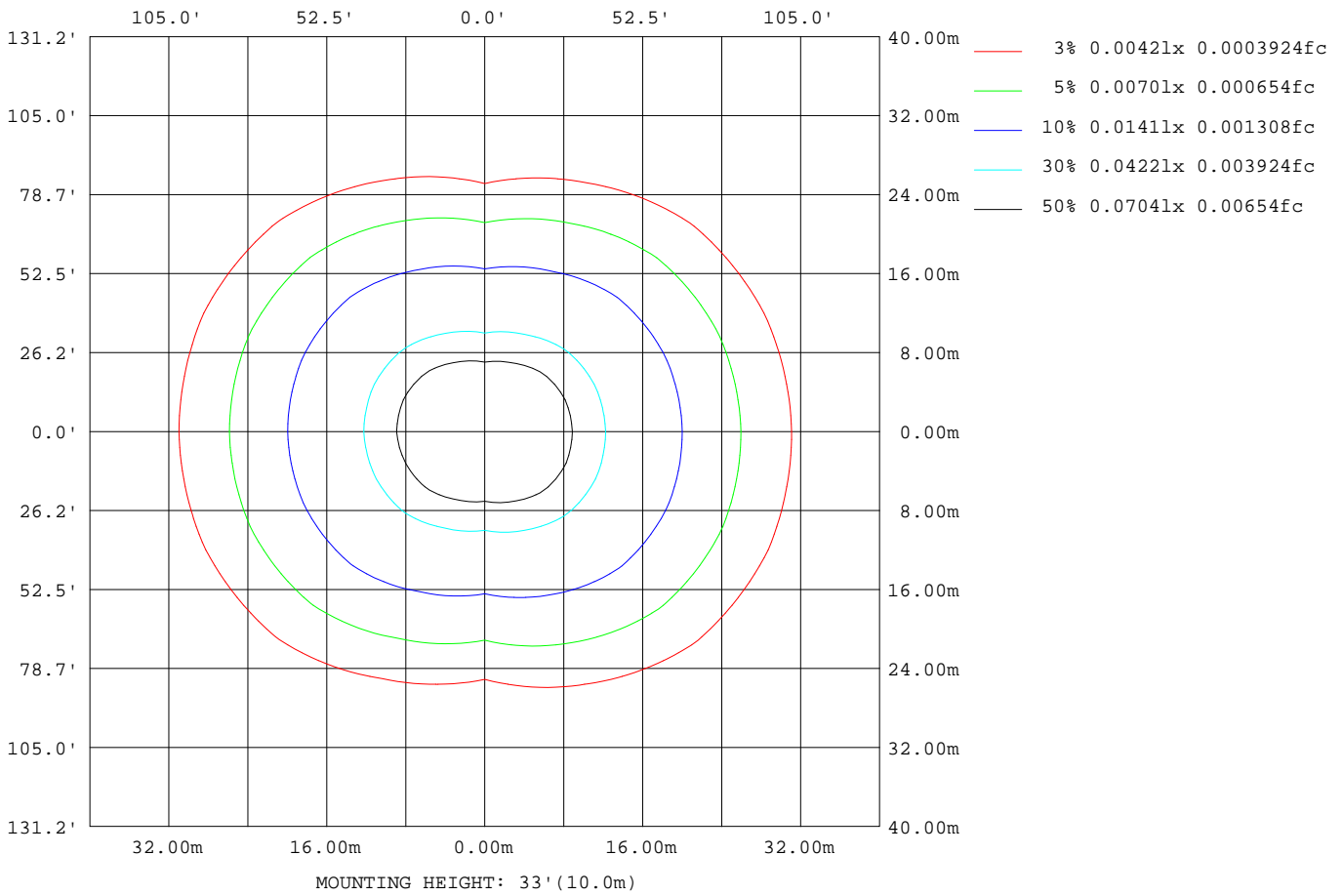
Note:The Curves indicate the illuminated area and the average illumination when the luminaire is at different distance.

C Range: 0 - 360DEG
 C Interval: 22.5DEG
 Test Speed: HIGH
 Temperature:24.5DEG
 Operators:Seth
 Test Date:2017-04-19

γ Range: 0 - 180DEG
 γ Interval: 1.0DEG
 Test System:EVERFINE GO-R5000_V2 SYSTEM V2.0.352
 Humidity:65.7%
 Test Distance:2.104m [K=1.0000]
 Remarks:

ISOLUX DIAGRAM

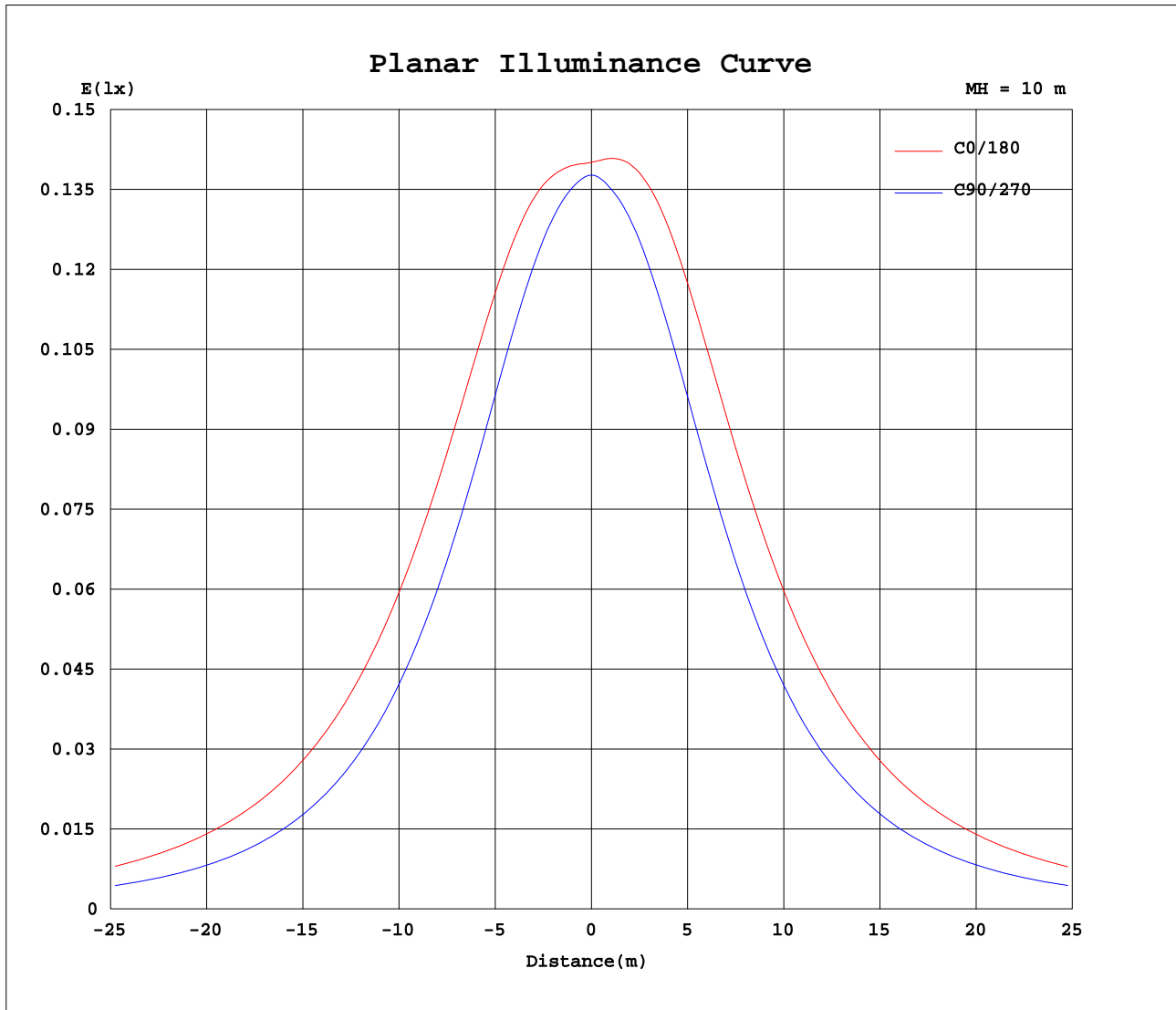
Test:U:0V I:0A P:0W PF:0 Freq:0Hz Lamp Flux:115.32x1 lm		
NAME: T	TYPE:LED	WEIGHT:N/A
SPEC.:N/A	DIM.:	SERIAL No.:N/A
MFR.:	SUR.:	Shielding Angle:N/A



C Range: 0 - 360DEG
 C Interval: 22.5DEG
 Test Speed: HIGH
 Temperature:24.5DEG
 Operators:Seth
 Test Date:2017-04-19

γ Range: 0 - 180DEG
 γ Interval: 1.0DEG
 Test System:EVERFINE GO-R5000_V2 SYSTEM V2.0.352
 Humidity:65.7%
 Test Distance:2.104m [K=1.0000]
 Remarks:

Planar Illuminance Curve



C Range: 0 - 360DEG
C Interval: 22.5DEG
Test Speed: HIGH
Temperature: 24.5DEG
Operators: Seth
Test Date: 2017-04-19

γ Range: 0 - 180DEG
 γ Interval: 1.0DEG
Test System: EVERFINE GO-R5000_V2 SYSTEM V2.0.352
Humidity: 65.7%
Test Distance: 2.104m [K=1.0000]
Remarks:

LUMINOUS DISTRIBUTION INTENSITY DATA

Test:U:0V I:0A P:0W PF:0 Freq:0Hz Lamp Flux:115.32x1 lm		
NAME: T	TYPE:LED	WEIGHT:N/A
SPEC.:N/A	DIM.:	SERIAL No.:N/A
MFR.:	SUR.:	Shielding Angle:N/A

Table--1

UNIT: cd

C(DEG) γ (DEG)	0	22.5	45	67.5	90	112.5	135	157.5	180	202.5	225	247.5	270	292.5	315	337.5			
0	14.0	14.0	14.0	13.9	13.8	13.7	13.6	13.7	14.0	14.0	14.0	13.9	13.8	13.7	13.6	13.7			
5	14.1	14.1	14.0	13.9	13.7	13.7	13.7	13.8	14.2	14.2	14.0	13.9	13.7	13.7	13.7	13.8			
10	14.5	14.4	14.2	14.0	13.7	13.7	13.8	14.0	14.7	14.6	14.3	13.9	13.7	13.8	14.0	14.2			
15	15.0	14.9	14.5	14.1	13.8	13.8	14.1	14.5	15.2	15.0	14.6	14.1	13.7	13.9	14.3	14.7			
20	15.5	15.4	14.9	14.2	13.7	13.9	14.5	14.9	15.8	15.5	15.0	14.2	13.7	14.0	14.7	15.3			
25	16.0	15.9	15.3	14.2	13.5	13.9	14.8	15.4	16.3	16.0	15.3	14.2	13.5	14.0	15.0	15.8			
30	16.4	16.3	15.6	14.2	13.3	13.8	15.0	15.8	16.6	16.4	15.5	14.1	13.2	13.9	15.3	16.1			
35	16.7	16.5	15.8	14.1	12.9	13.7	15.2	16.0	16.8	16.6	15.7	14.0	12.9	13.8	15.5	16.4			
40	16.8	16.7	15.8	13.9	12.5	13.5	15.3	16.2	16.9	16.7	15.7	13.8	12.4	13.6	15.5	16.5			
45	16.8	16.7	15.8	13.6	11.9	13.1	15.2	16.2	16.9	16.7	15.7	13.5	11.9	13.3	15.4	16.5			
50	16.7	16.6	15.7	13.2	11.3	12.7	15.0	16.1	16.7	16.5	15.5	13.0	11.3	12.8	15.2	16.3			
55	16.4	16.4	15.4	12.7	10.6	12.2	14.7	15.9	16.4	16.3	15.1	12.5	10.7	12.3	14.9	16.1			
60	16.1	16.1	15.0	12.1	9.79	11.6	14.3	15.5	16.0	15.9	14.7	11.9	9.84	11.7	14.4	15.7			
65	15.6	15.6	14.4	11.5	8.92	10.9	13.8	15.1	15.5	15.4	14.1	11.2	8.96	11.0	13.8	15.2			
70	15.0	15.0	13.8	10.7	8.00	10.1	13.1	14.5	14.8	14.7	13.4	10.5	8.01	10.3	13.2	14.5			
75	14.3	14.4	13.1	9.92	7.05	9.28	12.4	13.8	14.1	14.0	12.7	9.70	7.05	9.44	12.4	13.8			
80	13.6	13.7	12.4	9.11	6.15	8.47	11.7	13.1	13.4	13.3	12.0	8.88	6.17	8.65	11.7	13.1			
85	13.1	13.1	11.8	8.51	5.64	7.87	11.1	12.6	12.9	12.8	11.4	8.30	5.57	8.10	11.1	12.5			
90	12.9	12.9	11.6	8.28	5.41	7.63	10.9	12.4	12.7	12.6	11.2	8.10	5.42	7.92	11.0	12.3			
95	10.5	10.3	8.56	4.73	3.91	4.57	8.24	10.6	11.3	10.9	9.04	4.62	3.80	4.27	7.71	9.93			
100	6.14	6.03	4.05	4.70	2.90	4.35	3.80	6.24	6.85	6.35	4.20	4.63	3.23	4.69	3.82	5.87			
105	7.40	6.22	3.91	5.88	4.26	5.85	5.12	5.99	6.84	5.63	3.53	5.87	4.51	6.15	5.51	6.36			
110	9.02	7.78	5.84	5.19	4.29	5.37	6.31	7.10	8.45	7.20	5.58	5.25	4.58	5.66	6.59	7.46			
115	10.0	8.90	6.64	4.83	3.83	4.80	6.38	8.33	9.67	8.48	6.62	4.87	4.06	5.03	6.57	8.67			
120	10.2	9.03	6.41	4.51	3.32	4.32	6.15	8.66	10.3	8.87	6.46	4.52	3.47	4.49	6.34	8.73			
125	9.25	8.40	6.00	4.02	2.77	3.77	5.83	8.09	9.68	8.34	6.10	3.99	2.76	3.89	5.99	8.06			
130	8.38	7.71	5.42	3.16	0.86	3.03	5.31	7.42	8.83	7.70	5.58	3.36	0.75	3.24	5.41	7.41			
135	7.47	6.90	4.75	2.62	0.84	0.67	4.65	6.69	7.93	6.97	4.93	2.33	0.41	1.63	4.70	6.67			
140	6.52	6.02	3.98	0.50	0.52	0.46	3.89	5.86	6.96	6.16	4.22	0.25	0.39	0.30	3.88	5.83			
145	5.54	5.08	3.19	0.19	0.27	1.19	3.07	4.95	5.92	5.32	3.53	0.08	0.37	1.06	2.61	4.78			
150	4.48	4.10	2.36	0.65	0.01	0.51	2.33	3.99	4.81	4.44	3.01	0.59	0.00	0.22	1.39	3.51			
155	3.32	2.83	0.48	0.39	0.00	0.29	0.04	2.99	3.67	3.50	2.06	0.78	0.01	0.05	0.39	2.09			
160	1.46	0.54	0.41	0.18	0.00	0.12	0.66	0.21	1.38	1.20	0.04	0.57	0.03	0.00	0.38	0.02			
165	0.37	0.50	0.33	0.06	0.00	0.02	0.32	0.82	0.78	0.82	0.99	0.36	0.02	0.00	0.12	0.61			
170	0.28	0.20	0.11	0.00	0.00	0.00	0.08	0.23	0.36	0.36	0.31	0.11	0.00	0.00	0.01	0.16			
175	0.01	0.01	0.00	0.00	0.00	0.00	0.00	0.01	0.03	0.03	0.02	0.00	0.00	0.00	0.00	0.00			
180	0.00	0.00	0.00	0.00	0.00	0.00	0.00	0.00	0.00	0.00	0.00	0.00	0.00	0.00	0.00	0.00			

C Range: 0 - 360DEG
 C Interval: 22.5DEG
 Test Speed: HIGH
 Temperature:24.5DEG
 Operators:Seth
 Test Date:2017-04-19

γ Range: 0 - 180DEG
 γ Interval: 1.0DEG
 Test System:EVERFINE GO-R5000_V2 SYSTEM V2.0.352
 Humidity:65.7%
 Test Distance:2.104m [K=1.0000]
 Remarks: