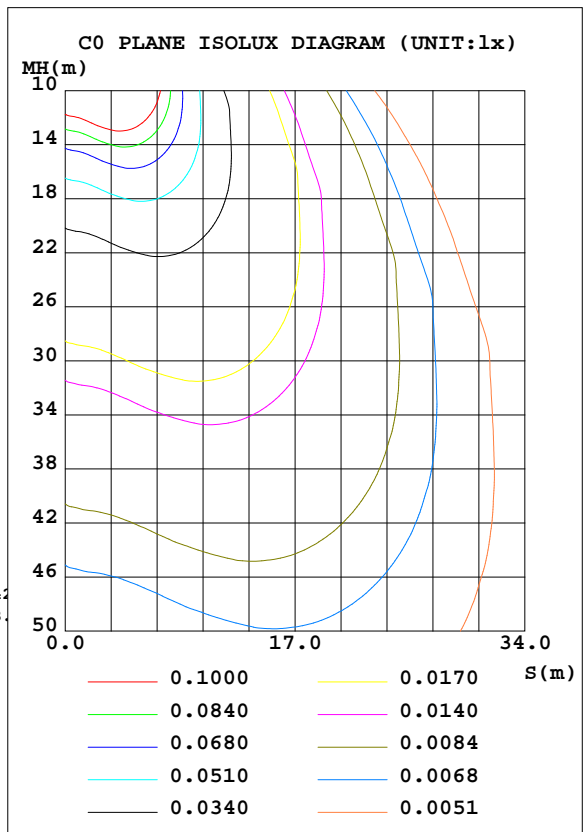
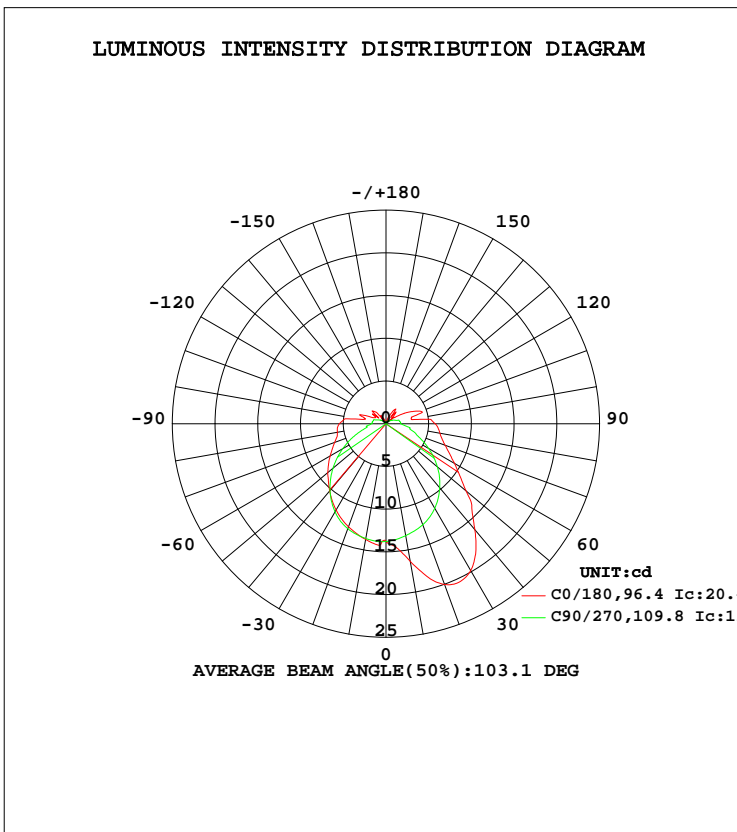


LUMINAIRE PHOTOMETRIC TEST REPORT

Test:U:3.550V I:0.4695A P:1.667W PF:1.000 Freq:0Hz Lamp Flux:68.355x1 lm		
NAME: 1	TYPE:	WEIGHT:
SPEC.:	DIM.:	SERIAL No.:
MFR.:	SUR.:	Shielding Angle:

DATA OF LAMP		PHOTOMETRIC DATA			
MODEL	GWRE1611	Imax(cd)	20.42	S/MH(C0/180)	1.26
NOMINAL POWER(W)	1.7	LOR(%)	100.0	S/MH(C90/270)	1.28
RATED VOLTAGE(V)	3.55	TOTAL FLUX(lm)	68.355	η UP, DN(C0-180)	9.1,41.2
NOMINAL FLUX(lm)	68.355	CIE CLASS	SEMI-D.	η UP, DN(C180-360)	9.0,40.6
LAMPS INSIDE	1	η up(%)	18.2	CIBSE SHR NOM	1.25
TEST VOLTAGE(V)	3.55	η down(%)	81.8	CIBSE SHR MAX	1.35



C Range: 0 - 360DEG
 C Interval: 22.5DEG
 Test Speed: HIGH
 Temperature:25.1DEG
 Operators:Wilson
 Test Date:2019-04-09

γ Range: 0 - 180DEG
 γ Interval: 0.5DEG
 Test System:EVERFINE GO-R5000_V2 SYSTEM V2.0.354
 Humidity:60.5%
 Test Distance:2.718m [K=1.0000]
 Remarks: File No.: WT-F-504-3206-01-A

Checker: Near Gao

Assessor: Akin Xu

ZONAL FLUX DIAGRAM

ZONAL FLUX DIAGRAM:

γ	C0	C45	C90	C135	C180	C225	C270	C315	γ	Φ zone	Φ total	%lum, lamp
5	14.57	14.22	13.60	14.23	14.16	14.30	13.79	14.38	0- 5	0.3361	0.3361	0.49,0.49
10	16.34	14.88	13.30	13.81	13.74	13.97	13.65	15.17	5- 10	1.023	1.360	1.99,1.99
15	18.48	15.91	12.98	13.31	13.31	13.52	13.41	16.39	10- 15	1.729	3.089	4.52,4.52
20	20.01	16.88	12.59	12.80	12.84	13.04	13.08	17.55	15- 20	2.443	5.532	8.09,8.09
25	20.42	17.48	12.07	12.23	12.29	12.49	12.59	18.28	20- 25	3.114	8.646	12.6,12.6
30	19.83	17.52	11.42	11.65	11.68	11.92	11.92	18.43	25- 30	3.685	12.33	18,18
35	18.34	16.96	10.66	10.97	10.99	11.25	11.12	17.83	30- 35	4.107	16.44	24,24
40	16.18	15.98	9.789	10.23	10.26	10.50	10.20	16.86	35- 40	4.353	20.79	30.4,30.4
45	14.24	14.73	8.858	9.430	9.536	9.688	9.185	15.55	40- 45	4.436	25.23	36.9,36.9
50	12.23	13.41	7.853	8.620	8.903	8.831	8.103	14.21	45- 50	4.396	29.62	43.3,43.3
55	10.54	11.81	6.813	7.830	8.214	7.999	6.982	12.55	50- 55	4.221	33.84	49.5,49.5
60	9.244	10.33	5.739	7.046	7.550	7.166	5.861	10.93	55- 60	3.965	37.81	55.3,55.3
65	8.195	8.945	4.723	6.307	6.933	6.373	4.774	9.409	60- 65	3.662	41.47	60.7,60.7
70	7.365	7.779	3.844	5.674	6.402	5.667	3.747	8.133	65- 70	3.345	44.82	65.6,65.6
75	6.790	6.922	3.199	5.159	5.950	5.094	2.856	7.169	70- 75	3.053	47.87	70,70
80	6.417	6.351	2.872	4.876	5.793	4.733	2.245	6.507	75- 80	2.834	50.70	74.2,74.2
85	6.139	5.936	2.138	4.693	5.717	4.567	2.054	6.057	80- 85	2.696	53.40	78.1,78.1
90	5.765	5.526	1.710	4.447	5.463	4.345	1.715	5.672	85- 90	2.538	55.94	81.8,81.8
95	5.335	5.093	1.720	4.075	5.020	4.000	1.655	5.217	90- 95	2.345	58.28	85.3,85.3
100	3.047	4.178	1.639	3.442	3.068	3.574	1.606	4.628	95-100	1.976	60.26	88.2,88.2
105	3.263	3.046	1.578	2.368	2.690	2.457	1.526	3.298	100-105	1.495	61.75	90.3,90.3
110	4.318	2.035	1.206	1.510	3.027	1.550	1.332	2.746	105-110	1.344	63.10	92.3,92.3
115	3.411	1.456	1.031	1.625	1.737	1.729	1.106	1.833	110-115	1.054	64.15	93.9,93.9
120	2.456	1.398	0.8486	2.137	1.448	2.001	0.9019	1.177	115-120	0.8303	64.98	95.1,95.1
125	1.445	1.916	0.6668	2.012	1.804	1.994	0.7354	0.9978	120-125	0.7115	65.69	96.1,96.1
130	0.6362	2.601	0.5223	1.801	1.263	1.805	0.5364	1.746	125-130	0.6331	66.33	97,97
135	1.274	2.552	0.2401	1.623	2.080	1.663	0.3058	2.596	130-135	0.5620	66.89	97.9,97.9
140	1.828	2.238	0.1807	1.371	1.738	1.408	0.2678	2.332	135-140	0.5019	67.39	98.6,98.6
145	1.684	1.698	0.3231	0.9907	0.4140	1.043	0.3306	1.659	140-145	0.3689	67.76	99.1,99.1
150	1.834	1.060	0.3435	0.6202	1.015	0.6766	0.2950	1.174	145-150	0.2919	68.05	99.6,99.6
155	1.181	0.6795	0.2590	0.3157	0.7218	0.3894	0.2307	0.7877	150-155	0.1747	68.23	99.8,99.8
160	0.7711	0.2953	0.1106	0.1850	0.4208	0.1955	0.1594	0.2877	155-160	0.0878	68.32	99.9,99.9
165	0.2538	0.0523	0.0706	0.0529	0.0378	0.0709	0.0746	0.0692	160-165	0.0299	68.35	100,100
170	0.0238	0.0281	0.0316	0.0266	0.0335	0.0443	0.0419	0.0363	165-170	0.0070	68.35	100,100
175	0.0256	0.0266	0.0257	0.0265	0.0314	0.0327	0.0306	0.0342	170-175	0.0023	68.35	100,100
180	0.0298	0.0315	0.0266	0.0305	0.0311	0.0309	0.0263	0.0305	175-180	0.0007	68.35	100,100
DEG	LUMINOUS INTENSITY:cd									UNIT:lm		

Conical surface Flux(90deg): 25.227 lm

%lum = 36.9%
%lamp = 36.9%

Conical surface Flux(120deg): 37.81 lm

%lum = 55.3%
%lamp = 55.3%

C Range: 0 - 360DEG
C Interval: 22.5DEG
Test Speed: HIGH
Temperature:25.1DEG
Operators:Wilson
Test Date:2019-04-09

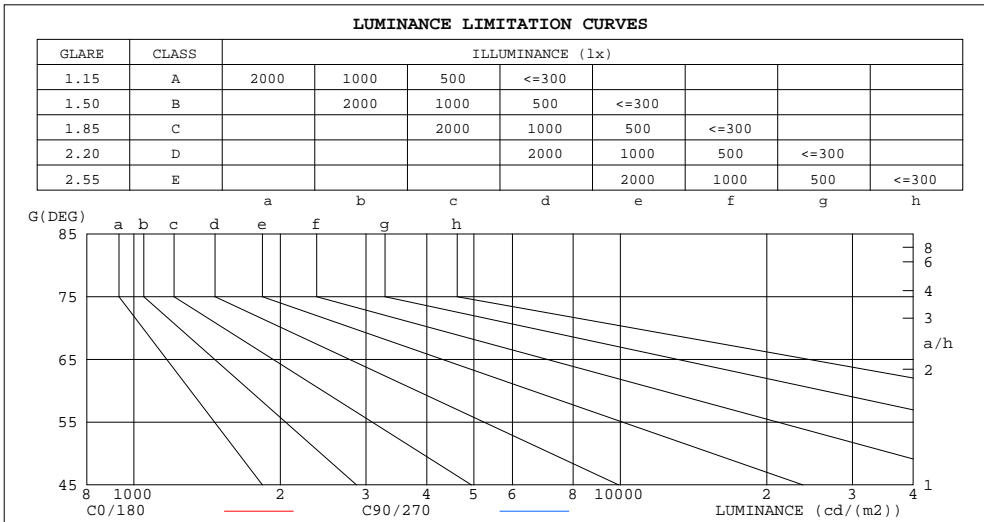
γ Range: 0 - 180DEG
γ Interval: 0.5DEG
Test System:EVERFINE GO-R5000_V2 SYSTEM V2.0.354
Humidity:60.5%
Test Distance:2.718m [K=1.0000]
Remarks: File No.: WT-F-504-3206-01-A

Checker: Near Gao

Assessor: Akin Xu

LUMINANCE LIMITATION CURVES

Test:U:3.550V I:0.4695A P:1.667W PF:1.000 Freq:0Hz Lamp Flux:68.355x1 lm		
NAME: 1	TYPE:	WEIGHT:
SPEC.:	DIM.:	SERIAL No.:
MFR.:	SUR.:	Shielding Angle:



LUMINANCE cd/(m2)		
G(DEG)	C0/180	C90/270
85	654	227
80	343	153
75	244	114
70	200	104
65	180	103
60	172	106
55	171	110
50	177	113
45	187	116

C Range: 0 - 360DEG
 C Interval: 22.5DEG
 Test Speed: HIGH
 Temperature: 25.1DEG
 Operators: Wilson
 Test Date: 2019-04-09

γ Range: 0 - 180DEG
 γ Interval: 0.5DEG
 Test System: EVERFINE GO-R5000_V2 SYSTEM V2.0.354
 Humidity: 60.5%
 Test Distance: 2.718m [K=1.0000]
 Remarks: File No.: WT-F-504-3206-01-A

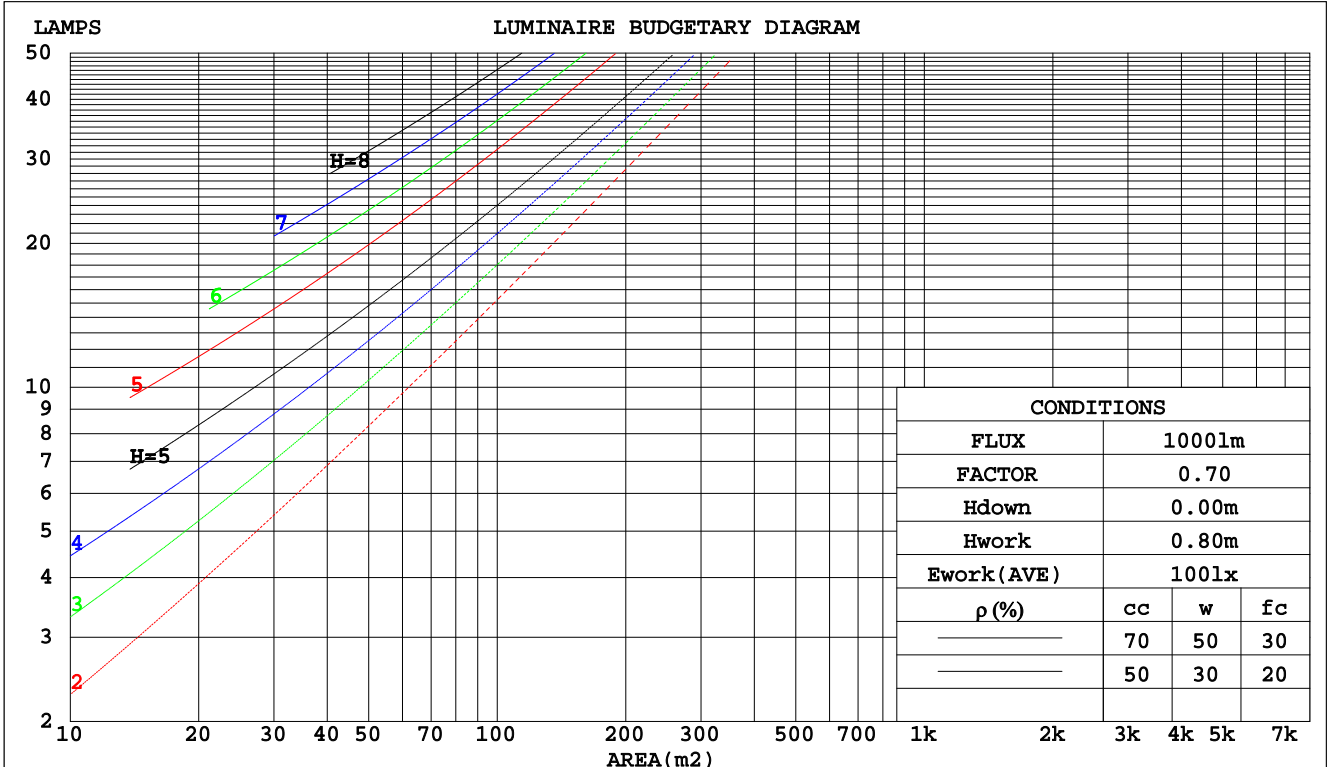
Checker: Near Gao

Assessor: Akin Xu

CU AND LUMINAIRE BUDGETARY ESTIMATE DIAGRAM

Test:U:3.550V I:0.4695A P:1.667W PF:1.000 Freq:0Hz Lamp Flux:68.355x1 lm		
NAME: 1	TYPE:	WEIGHT:
SPEC.:	DIM.:	SERIAL No.:
MFR.:	SUR.:	Shielding Angle:

pcc	80%			70%			50%			30%			10%			0
	50%	30%	10%	50%	30%	10%	50%	30%	10%	50%	30%	10%	50%	30%	10%	0
pw																0
pfc	20%			20%			20%			20%			20%			0
RCR	RCR:Room Cavity Ratio						Coefficients of Utilization(CU)									
0.0	1.15	1.15	1.15	1.10	1.10	1.10	1.01	1.01	1.01	.93	.93	.93	.85	.85	.85	.82
1.0	.96	.91	.86	.92	.87	.83	.84	.80	.77	.77	.74	.71	.71	.68	.66	.62
2.0	.82	.75	.68	.79	.72	.66	.72	.67	.62	.66	.62	.57	.61	.57	.54	.50
3.0	.72	.63	.56	.69	.61	.54	.63	.56	.51	.58	.52	.48	.53	.48	.45	.41
4.0	.63	.54	.47	.60	.52	.45	.56	.48	.43	.51	.45	.40	.47	.42	.38	.35
5.0	.56	.47	.40	.54	.45	.39	.50	.42	.37	.46	.39	.35	.42	.37	.33	.30
6.0	.50	.41	.34	.48	.40	.33	.45	.37	.32	.41	.35	.30	.38	.33	.28	.26
7.0	.45	.36	.30	.44	.35	.29	.40	.33	.28	.37	.31	.26	.35	.29	.25	.23
8.0	.41	.33	.27	.40	.32	.26	.37	.30	.25	.34	.28	.24	.32	.26	.22	.20
9.0	.38	.29	.24	.36	.29	.23	.34	.27	.22	.31	.25	.21	.29	.24	.20	.18
10.0	.35	.27	.21	.33	.26	.21	.31	.25	.20	.29	.23	.19	.27	.22	.18	.16



C Range: 0 - 360DEG
 C Interval: 22.5DEG
 Test Speed: HIGH
 Temperature:25.1DEG
 Operators:Wilson
 Test Date:2019-04-09

γ Range: 0 - 180DEG
 γ Interval: 0.5DEG
 Test System:EVERFINE GO-R5000_V2 SYSTEM V2.0.354
 Humidity:60.5%
 Test Distance:2.718m [K=1.0000]
 Remarks: File No.: WT-F-504-3206-01-A

Checker: Near Gao

Assessor: Akin Xu

WEC AND CCEC

Test:U:3.550V I:0.4695A P:1.667W PF:1.000 Freq:0Hz Lamp Flux:68.355x1 lm		
NAME: 1	TYPE:	WEIGHT:
SPEC.:	DIM.:	SERIAL No.:
MFR.:	SUR.:	Shielding Angle:

ρcc	80%			70%			50%			30%			10%			0
ρw	50%	30%	10%	50%	30%	10%	50%	30%	10%	50%	30%	10%	50%	30%	10%	0
ρfc	20%			20%			20%			20%			20%			0
RCR	RCR:Room Cavity Ratio						Wall Exitance Coefficients(WEC)									
0.0																
1.0	.380	.216	.068	.367	.209	.066	.343	.197	.063	.321	.185	.059	.301	.174	.056	
2.0	.328	.180	.055	.316	.174	.054	.294	.164	.051	.275	.154	.048	.256	.145	.046	
3.0	.291	.155	.046	.281	.150	.045	.261	.142	.043	.243	.133	.041	.227	.125	.039	
4.0	.262	.136	.040	.253	.132	.039	.235	.125	.037	.219	.118	.035	.204	.111	.034	
5.0	.239	.122	.035	.231	.118	.034	.214	.112	.033	.200	.105	.031	.186	.099	.030	
6.0	.219	.110	.031	.212	.107	.031	.197	.101	.029	.183	.095	.028	.171	.090	.027	
7.0	.203	.100	.028	.196	.097	.028	.182	.092	.027	.170	.087	.025	.158	.082	.024	
8.0	.188	.092	.026	.182	.089	.025	.169	.085	.024	.158	.080	.023	.147	.075	.022	
9.0	.176	.085	.024	.170	.083	.023	.158	.078	.022	.148	.074	.021	.138	.070	.020	
10.0	.164	.079	.022	.159	.077	.021	.148	.073	.020	.139	.069	.020	.129	.065	.019	

ρcc	80%			70%			50%			30%			10%			0
ρw	50%	30%	10%	50%	30%	10%	50%	30%	10%	50%	30%	10%	50%	30%	10%	0
ρfc	20%			20%			20%			20%			20%			0
RCR	RCR:Room Cavity Ratio						Ceiling Cavity Exitance Coefficients(CCEC)									
0.0	.329	.329	.329	.281	.281	.281	.192	.192	.192	.110	.110	.110	.035	.035	.035	
1.0	.325	.295	.268	.278	.253	.231	.190	.174	.160	.109	.101	.093	.035	.032	.030	
2.0	.317	.272	.234	.272	.234	.202	.186	.162	.141	.107	.094	.083	.034	.031	.027	
3.0	.310	.256	.213	.266	.221	.184	.182	.153	.129	.105	.089	.076	.034	.029	.025	
4.0	.302	.243	.198	.259	.210	.172	.178	.146	.121	.103	.086	.072	.033	.028	.024	
5.0	.294	.233	.188	.253	.202	.164	.174	.141	.116	.101	.083	.069	.033	.027	.023	
6.0	.287	.225	.181	.247	.195	.158	.170	.137	.112	.099	.080	.066	.032	.026	.022	
7.0	.280	.219	.176	.241	.190	.153	.166	.133	.109	.097	.078	.065	.031	.026	.021	
8.0	.273	.213	.172	.235	.185	.150	.163	.130	.106	.095	.077	.063	.031	.025	.021	
9.0	.267	.208	.169	.230	.181	.147	.159	.127	.104	.093	.075	.062	.030	.025	.021	
10.0	.261	.204	.166	.225	.177	.145	.156	.125	.103	.091	.074	.061	.030	.024	.020	

C Range: 0 - 360DEG
 C Interval: 22.5DEG
 Test Speed: HIGH
 Temperature:25.1DEG
 Operators:Wilson
 Test Date:2019-04-09

γ Range: 0 - 180DEG
 γ Interval: 0.5DEG
 Test System:EVERFINE GO-R5000_V2 SYSTEM V2.0.354
 Humidity:60.5%
 Test Distance:2.718m [K=1.0000]
 Remarks: File No.: WT-F-504-3206-01-A

Checker: Near Gao

Assessor: Akin Xu

UGR(Unified Glare Rating) Table

Test:U:3.550V I:0.4695A P:1.667W PF:1.000 Freq:0Hz Lamp Flux:68.355x1 lm										
NAME: 1					TYPE:			WEIGHT:		
SPEC.:					DIM.:			SERIAL No.:		
MFR.:					SUR.:			Shielding Angle:		
ceiling/cavity	0.7	0.7	0.5	0.5	0.3	0.7	0.7	0.5	0.5	0.3
walls	0.5	0.3	0.5	0.3	0.3	0.5	0.3	0.5	0.3	0.3
working plane	0.2	0.2	0.2	0.2	0.2	0.2	0.2	0.2	0.2	0.2
Room dimensions	Viewed crosswise					Viewed endwise				
x = 2H y = 2H	15.6	16.9	16.1	17.4	18.0	14.3	15.6	14.8	16.1	16.7
3H	17.6	18.8	18.1	19.3	19.9	15.8	17.0	16.3	17.6	18.2
4H	18.8	19.9	19.3	20.5	21.1	16.6	17.7	17.1	18.3	18.9
6H	20.2	21.3	20.8	21.9	22.5	17.4	18.5	18.0	19.1	19.7
8H	21.1	22.1	21.7	22.7	23.4	17.8	18.9	18.4	19.5	20.2
12H	22.1	23.1	22.7	23.7	24.4	18.3	19.3	18.9	19.9	20.6
4H 2H	16.3	17.5	16.8	18.0	18.6	15.4	16.5	15.9	17.1	17.7
3H	18.5	19.5	19.1	20.1	20.8	17.3	18.3	17.9	18.9	19.6
4H	19.9	20.8	20.5	21.4	22.2	18.3	19.2	18.9	19.9	20.6
6H	21.5	22.4	22.2	23.0	23.8	19.4	20.2	20.0	20.9	21.6
8H	22.5	23.3	23.2	24.0	24.7	20.0	20.8	20.6	21.4	22.2
12H	23.7	24.4	24.4	25.1	25.9	20.5	21.3	21.2	21.9	22.7
8H 4H	20.4	21.2	21.1	21.9	22.6	19.2	20.0	19.8	20.6	21.4
6H	22.4	23.0	23.1	23.7	24.5	20.7	21.4	21.4	22.1	22.9
8H	23.6	24.2	24.3	24.9	25.7	21.6	22.2	22.3	22.9	23.7
12H	25.0	25.5	25.7	26.2	27.1	22.5	23.0	23.2	23.7	24.6
12H 4H	20.5	21.2	21.2	21.9	22.7	19.4	20.1	20.1	20.8	21.6
6H	22.6	23.2	23.3	23.9	24.7	21.2	21.8	21.9	22.5	23.3
8H	23.9	24.5	24.6	25.2	26.0	22.2	22.8	22.9	23.5	24.3
Variations with the observer position at spacings:										
S = 1.0H	+ 0.1 / - 0.1					+ 0.1 / - 0.2				
1.5H	+ 0.2 / - 0.3					+ 0.3 / - 0.4				
2.0H	+ 0.2 / - 0.3					+ 0.3 / - 0.6				

CIE Pub.117, 68.35 lm Total Lamp Luminous Flux Correct (8log(F/F0) = -9.3)

C Range: 0 - 360DEG
 C Interval: 22.5DEG
 Test Speed: HIGH
 Temperature:25.1DEG
 Operators:Wilson
 Test Date:2019-04-09

γ Range: 0 - 180DEG
 γ Interval: 0.5DEG
 Test System:EVERFINE GO-R5000_V2 SYSTEM V2.0.354
 Humidity:60.5%
 Test Distance:2.718m [K=1.0000]
 Remarks: File No.: WT-F-504-3206-01-A

Checker: Near Gao

Assessor: Akin Xu

UTILIZATION FACTORS TABLE

Test:U:3.550V I:0.4695A P:1.667W PF:1.000 Freq:0Hz Lamp Flux:68.355x1 lm		
NAME: 1	TYPE:	WEIGHT:
SPEC.:	DIM.:	SERIAL No.:
MFR.:	SUR.:	Shielding Angle:

REFLECTANCE										
Ceiling	0.8	0.8	0.8	0.7	0.7	0.7	0.5	0.5	0.5	0
Walls	0.7	0.5	0.3	0.7	0.5	0.3	0.7	0.5	0.3	0
Working plane	0.2	0.2	0.2	0.2	0.2	0.2	0.2	0.2	0.2	0
ROOM INDEX	UTILIZATION FACTORS(PERCENT) $k(RI) \times RCR = 5$									
k = 0.60	49	36	29	48	36	29	46	35	29	22
0.80	58	45	37	56	44	37	54	43	36	28
1.00	66	53	45	64	52	44	60	52	43	34
1.25	72	60	52	70	59	51	66	56	49	40
1.50	77	65	57	75	64	56	70	61	54	44
2.00	85	74	65	81	72	64	76	68	61	50
2.50	89	79	71	86	76	69	79	72	66	53
3.00	93	83	76	89	81	74	82	76	70	57
4.00	97	89	83	93	86	80	86	80	75	61
5.00	100	93	87	96	90	84	88	84	79	64
ROOM INDEX	UF(total)									Direct
According to DIN EN 13032-2 2004			Suspended				SHRNM = 1.25			

C Range: 0 - 360DEG
 C Interval: 22.5DEG
 Test Speed: HIGH
 Temperature:25.1DEG
 Operators:Wilson
 Test Date:2019-04-09

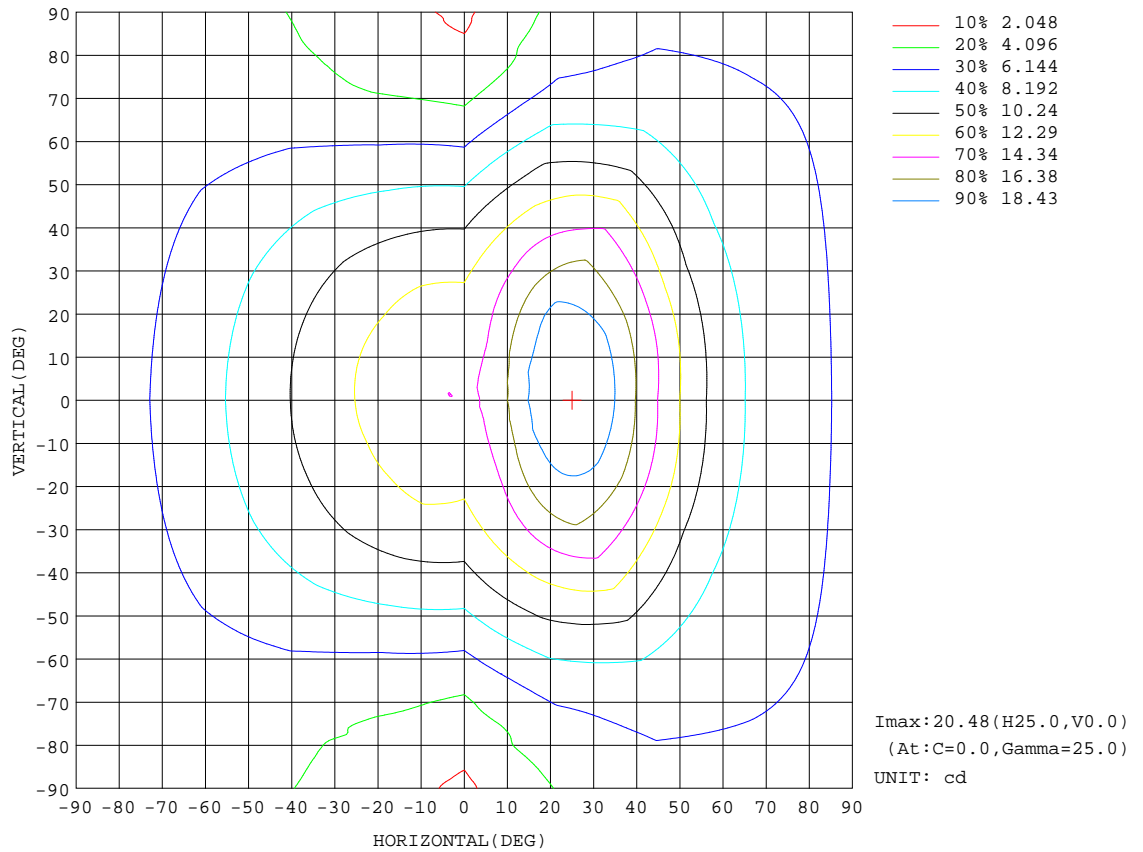
γ Range: 0 - 180DEG
 γ Interval: 0.5DEG
 Test System:EVERFINE GO-R5000_V2 SYSTEM V2.0.354
 Humidity:60.5%
 Test Distance:2.718m [K=1.0000]
 Remarks: File No.: WT-F-504-3206-01-A

Checker: Near Gao

Assessor: Akin Xu

ISOCANDELA DIAGRAM

Test:U:3.550V I:0.4695A P:1.667W PF:1.000 Freq:0Hz Lamp Flux:68.355x1 lm		
NAME: 1	TYPE:	WEIGHT:
SPEC.:	DIM.:	SERIAL No.:
MFR.:	SUR.:	Shielding Angle:



C Range: 0 - 360DEG
 C Interval: 22.5DEG
 Test Speed: HIGH
 Temperature: 25.1DEG
 Operators: Wilson
 Test Date: 2019-04-09

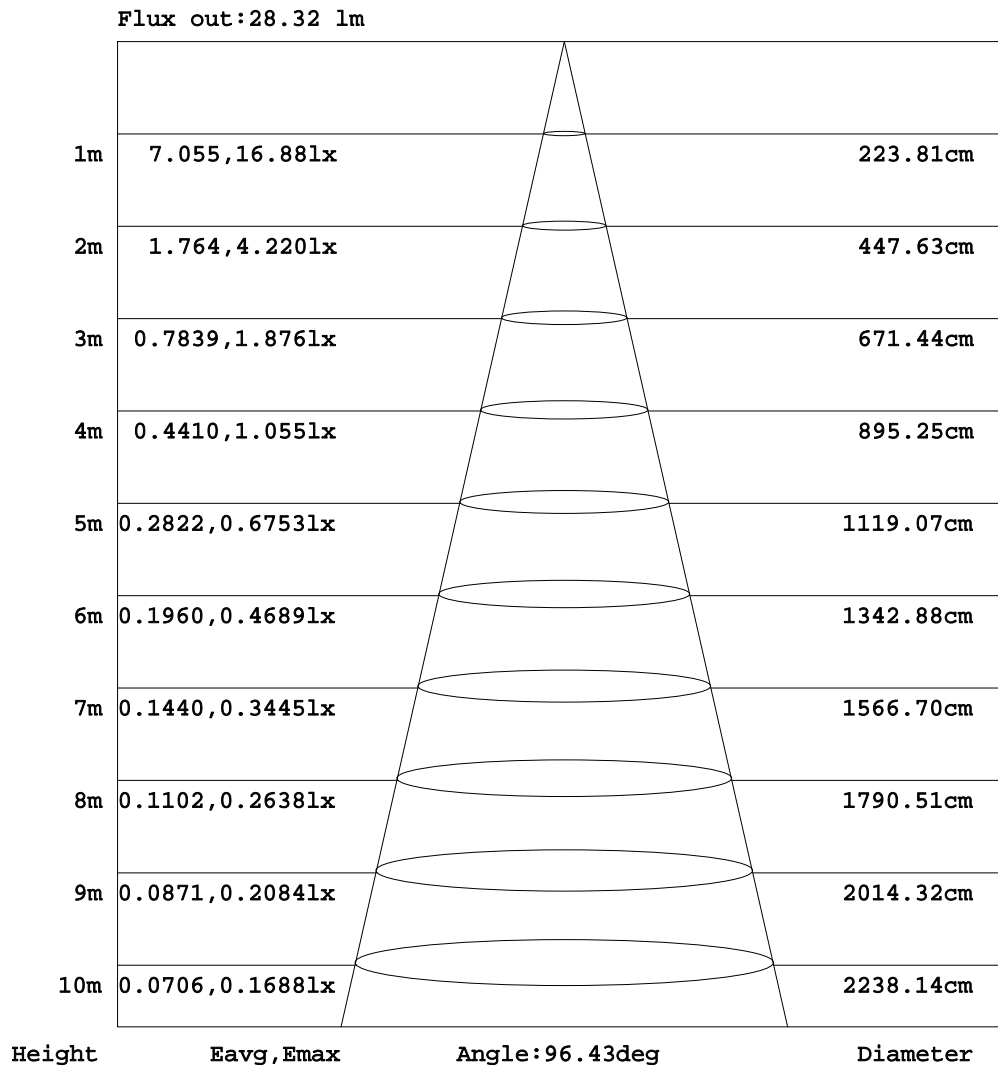
γ Range: 0 - 180DEG
 γ Interval: 0.5DEG
 Test System: EVERFINE GO-R5000_V2 SYSTEM V2.0.354
 Humidity: 60.5%
 Test Distance: 2.718m [K=1.0000]
 Remarks: File No.: WT-F-504-3206-01-A

Checker: Near Gao

Assessor: Akin Xu

AAI Figure

Test:U:3.550V I:0.4695A P:1.667W PF:1.000 Freq:0Hz Lamp Flux:68.355x1 lm		
NAME: 1	TYPE:	WEIGHT:
SPEC.:	DIM.:	SERIAL No.:
MFR.:	SUR.:	Shielding Angle:



Note:The Curves indicate the illuminated area and the average illumination when the luminaire is at different distance.

C Range: 0 - 360DEG
 C Interval: 22.5DEG
 Test Speed: HIGH
 Temperature:25.1DEG
 Operators:Wilson
 Test Date:2019-04-09

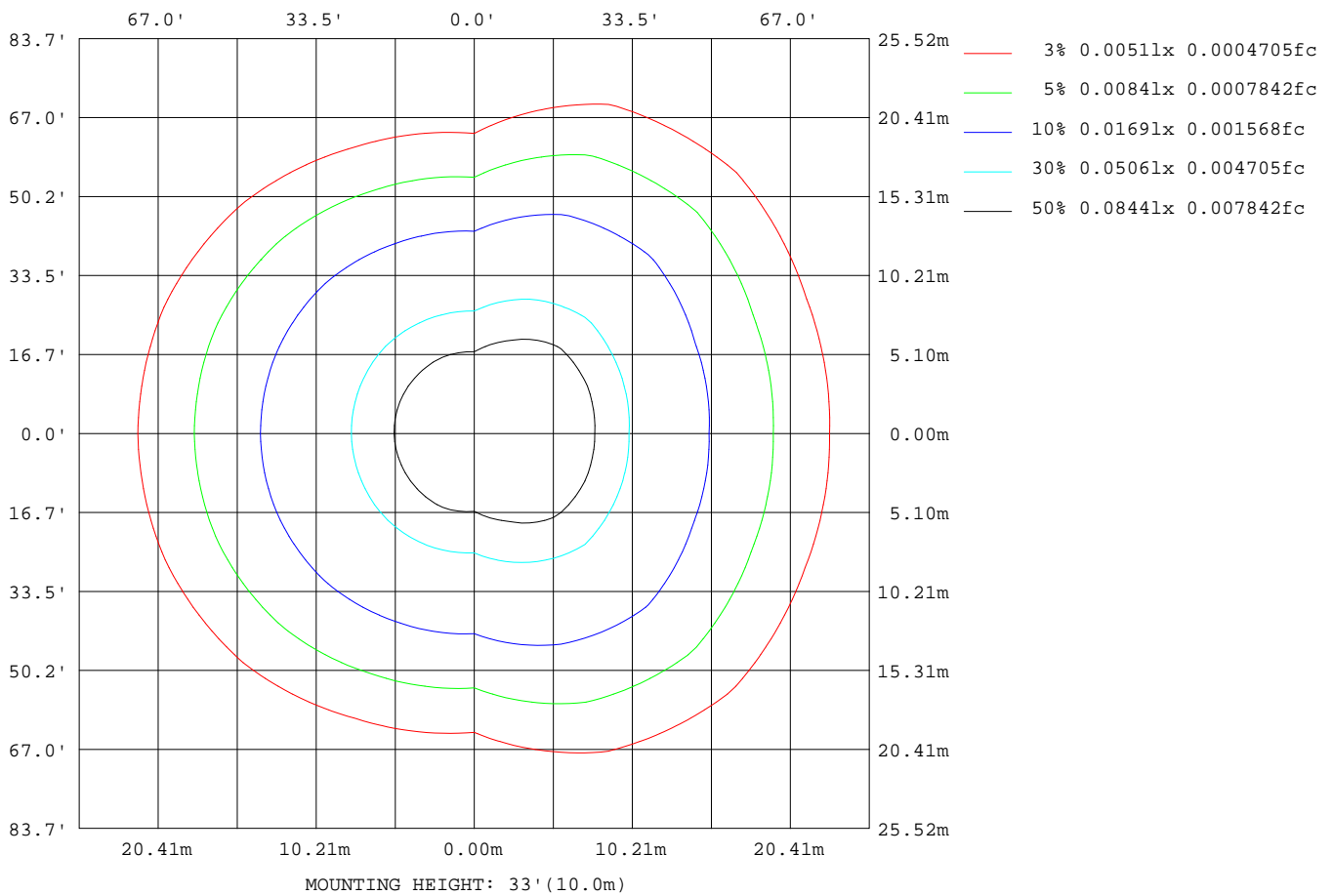
γ Range: 0 - 180DEG
 γ Interval: 0.5DEG
 Test System:EVERFINE GO-R5000_V2 SYSTEM V2.0.354
 Humidity:60.5%
 Test Distance:2.718m [K=1.0000]
 Remarks: File No.: WT-F-504-3206-01-A

Checker: Near Gao

Assessor: Akin Xu

ISOLUX DIAGRAM

Test:U:3.550V I:0.4695A P:1.667W PF:1.000 Freq:0Hz Lamp Flux:68.355x1 lm		
NAME: 1	TYPE:	WEIGHT:
SPEC.:	DIM.:	SERIAL No.:
MFR.:	SUR.:	Shielding Angle:



C Range: 0 - 360DEG
 C Interval: 22.5DEG
 Test Speed: HIGH
 Temperature: 25.1DEG
 Operators: Wilson
 Test Date: 2019-04-09

γ Range: 0 - 180DEG
 γ Interval: 0.5DEG
 Test System: EVERFINE GO-R5000_V2 SYSTEM V2.0.354
 Humidity: 60.5%
 Test Distance: 2.718m [K=1.0000]
 Remarks: File No.: WT-F-504-3206-01-A

Checker: Near Gao

Assessor: Akin Xu

LED Avg.L Report

Test:U:3.550V I:0.4695A P:1.667W PF:1.000 Freq:0Hz Lamp Flux:68.355x1 lm		
NAME: 1	TYPE:	WEIGHT:
SPEC.:	DIM.:	SERIAL No.:
MFR.:	SUR.:	Shielding Angle:

AvgL	cd/m2
L_0~180(65)av	166
L_0~180(75)av	228
L_0~180(85)av	630
L_90~270(65)av	104
L_90~270(75)av	108
L_90~270(85)av	223
L_45(65)av	170
L_45(75)av	218
L_45(85)av	564

Standard: GB/T 29293-2012

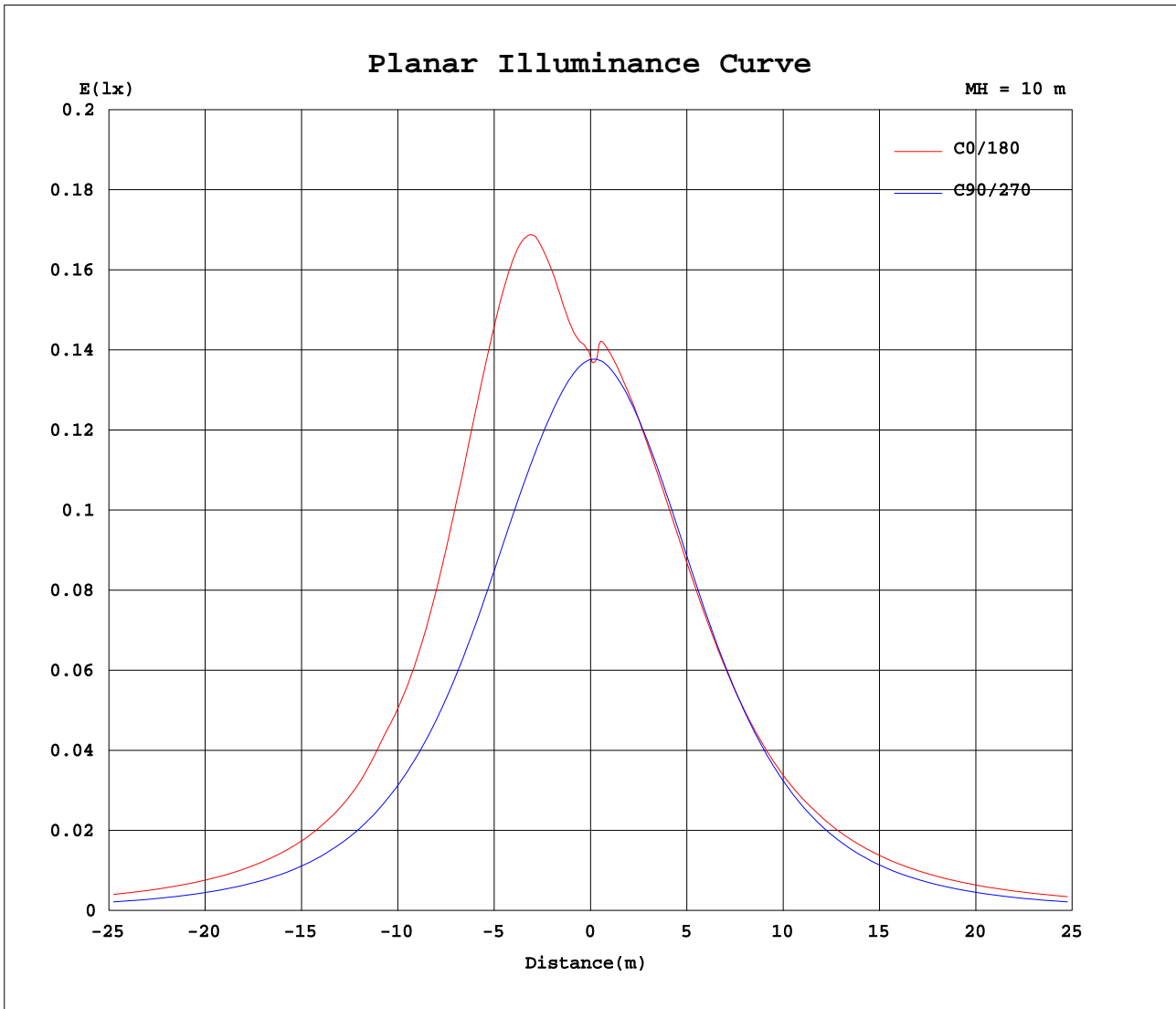
C Range: 0 - 360DEG
 C Interval: 22.5DEG
 Test Speed: HIGH
 Temperature:25.1DEG
 Operators:Wilson
 Test Date:2019-04-09

γ Range: 0 - 180DEG
 γ Interval: 0.5DEG
 Test System:EVERFINE GO-R5000_V2 SYSTEM V2.0.354
 Humidity:60.5%
 Test Distance:2.718m [K=1.0000]
 Remarks: File No.: WT-F-504-3206-01-A

Checker: Near Gao

Assessor: Akin Xu

Planar Illuminance Curve



C Range: 0 - 360DEG
 C Interval: 22.5DEG
 Test Speed: HIGH
 Temperature: 25.1DEG
 Operators: Wilson
 Test Date: 2019-04-09

γ Range: 0 - 180DEG
 γ Interval: 0.5DEG
 Test System: EVERFINE GO-R5000_V2 SYSTEM V2.0.354
 Humidity: 60.5%
 Test Distance: 2.718m [K=1.0000]
 Remarks: File No.: WT-F-504-3206-01-A

Checker: Near Gao

Assessor: Akin Xu

LUMINOUS DISTRIBUTION INTENSITY DATA

Test:U:3.550V I:0.4695A P:1.667W PF:1.000 Freq:0Hz Lamp Flux:68.355x1 lm		
NAME: 1	TYPE:	WEIGHT:
SPEC.:	DIM.:	SERIAL No.:
MFR.:	SUR.:	Shielding Angle:

Table--1

UNIT: cd

C(DEG) γ (DEG)	0	22.5	45	67.5	90	112.5	135	157.5	180	202.5	225	247.5	270	292.5	315	337.5			
0	13.8	13.8	13.8	13.8	13.8	13.8	13.8	13.8	13.8	13.8	13.8	13.8	13.8	13.8	13.8	13.8			
5	14.6	14.5	14.2	14.0	13.6	13.8	14.2	14.2	14.2	14.3	14.3	13.9	13.8	14.2	14.4	14.5			
10	16.3	15.9	14.9	14.0	13.3	13.9	13.8	13.7	13.7	13.9	14.0	14.1	13.6	14.2	15.2	16.1			
15	18.5	17.8	15.9	14.0	13.0	13.4	13.3	13.3	13.3	13.5	13.5	13.8	13.4	14.4	16.4	18.0			
20	20.0	19.1	16.9	14.0	12.6	13.0	12.8	12.8	12.8	13.0	13.0	13.3	13.1	14.6	17.5	19.5			
25	20.4	19.6	17.5	14.0	12.1	12.4	12.2	12.2	12.3	12.4	12.5	12.7	12.6	14.7	18.3	20.1			
30	19.8	19.3	17.5	13.8	11.4	11.7	11.6	11.6	11.7	11.8	11.9	12.1	11.9	14.6	18.4	19.8			
35	18.3	18.1	17.0	13.3	10.7	10.9	11.0	10.9	11.0	11.1	11.3	11.2	11.1	14.2	17.8	18.7			
40	16.2	16.4	16.0	12.7	9.79	10.1	10.2	10.2	10.3	10.4	10.5	10.3	10.2	13.6	16.9	16.9			
45	14.2	14.6	14.7	11.8	8.86	9.13	9.43	9.49	9.54	9.63	9.69	9.39	9.19	12.8	15.6	15.0			
50	12.2	12.8	13.4	10.8	7.85	8.17	8.62	8.82	8.90	8.92	8.83	8.40	8.10	11.7	14.2	13.2			
55	10.5	10.9	11.8	9.74	6.81	7.19	7.83	8.12	8.21	8.22	8.00	7.39	6.98	10.7	12.6	11.1			
60	9.24	9.45	10.3	8.60	5.74	6.24	7.05	7.45	7.55	7.54	7.17	6.39	5.86	9.51	10.9	9.64			
65	8.19	8.35	8.95	7.53	4.72	5.34	6.31	6.81	6.93	6.88	6.37	5.42	4.77	8.35	9.41	8.46			
70	7.37	7.45	7.78	6.54	3.84	4.62	5.67	6.24	6.40	6.30	5.67	4.53	3.75	7.25	8.13	7.53			
75	6.79	6.80	6.92	5.75	3.20	4.09	5.16	5.78	5.95	5.81	5.09	3.85	2.86	6.28	7.17	6.84			
80	6.42	6.39	6.35	5.33	2.87	3.66	4.88	5.59	5.79	5.56	4.73	3.54	2.24	5.66	6.51	6.40			
85	6.14	6.07	5.94	4.82	2.14	3.25	4.69	5.46	5.72	5.43	4.57	3.08	2.05	5.21	6.06	6.08			
90	5.76	5.67	5.53	4.31	1.71	3.02	4.45	5.20	5.46	5.19	4.35	2.85	1.72	4.80	5.67	5.71			
95	5.33	5.13	5.09	3.94	1.72	2.79	4.07	4.78	5.02	4.78	4.00	2.58	1.65	4.35	5.22	5.27			
100	3.05	2.91	4.18	3.62	1.64	2.61	3.44	2.67	3.07	2.68	3.57	2.41	1.61	3.97	4.63	2.91			
105	3.26	3.60	3.05	3.15	1.58	2.30	2.37	2.23	2.69	2.46	2.46	2.20	1.53	3.46	3.30	2.74			
110	4.32	3.62	2.04	2.36	1.21	1.74	1.51	2.21	3.03	2.26	1.55	1.74	1.33	2.58	2.75	3.66			
115	3.41	2.87	1.46	1.82	1.03	1.34	1.62	1.45	1.74	1.50	1.73	1.45	1.11	2.18	1.83	3.03			
120	2.46	1.86	1.40	1.69	0.85	1.23	2.14	1.41	1.45	1.43	2.00	1.24	0.90	1.96	1.18	2.17			
125	1.45	1.29	1.92	1.67	0.67	1.22	2.01	2.08	1.80	2.10	1.99	1.09	0.74	1.71	1.00	1.33			
130	0.64	1.00	2.60	1.46	0.52	1.02	1.80	2.15	1.26	2.17	1.81	0.94	0.54	1.58	1.75	0.82			
135	1.27	1.57	2.55	1.05	0.24	0.69	1.62	1.65	2.08	1.64	1.66	0.68	0.31	1.26	2.60	1.21			
140	1.83	1.77	2.24	0.92	0.18	0.66	1.37	1.18	1.74	1.08	1.41	0.71	0.27	1.09	2.33	1.34			
145	1.68	1.95	1.70	0.80	0.32	0.67	0.99	1.02	0.41	1.06	1.04	0.70	0.33	0.91	1.66	1.87			
150	1.83	1.44	1.06	0.49	0.34	0.47	0.62	0.76	1.02	0.77	0.68	0.51	0.29	0.57	1.17	1.44			
155	1.18	0.92	0.68	0.29	0.26	0.30	0.32	0.53	0.72	0.51	0.39	0.35	0.23	0.35	0.79	0.72			
160	0.77	0.55	0.30	0.17	0.11	0.17	0.19	0.20	0.42	0.19	0.20	0.21	0.16	0.22	0.29	0.55			
165	0.25	0.15	0.05	0.08	0.07	0.08	0.05	0.09	0.04	0.11	0.07	0.09	0.07	0.10	0.07	0.16			
170	0.02	0.03	0.03	0.03	0.03	0.03	0.03	0.03	0.03	0.04	0.04	0.05	0.04	0.05	0.04	0.04			
175	0.03	0.03	0.03	0.03	0.03	0.03	0.03	0.03	0.03	0.03	0.03	0.03	0.03	0.04	0.03	0.03			
180	0.03	0.03	0.03	0.03	0.03	0.03	0.03	0.03	0.03	0.03	0.03	0.03	0.03	0.03	0.03	0.03			

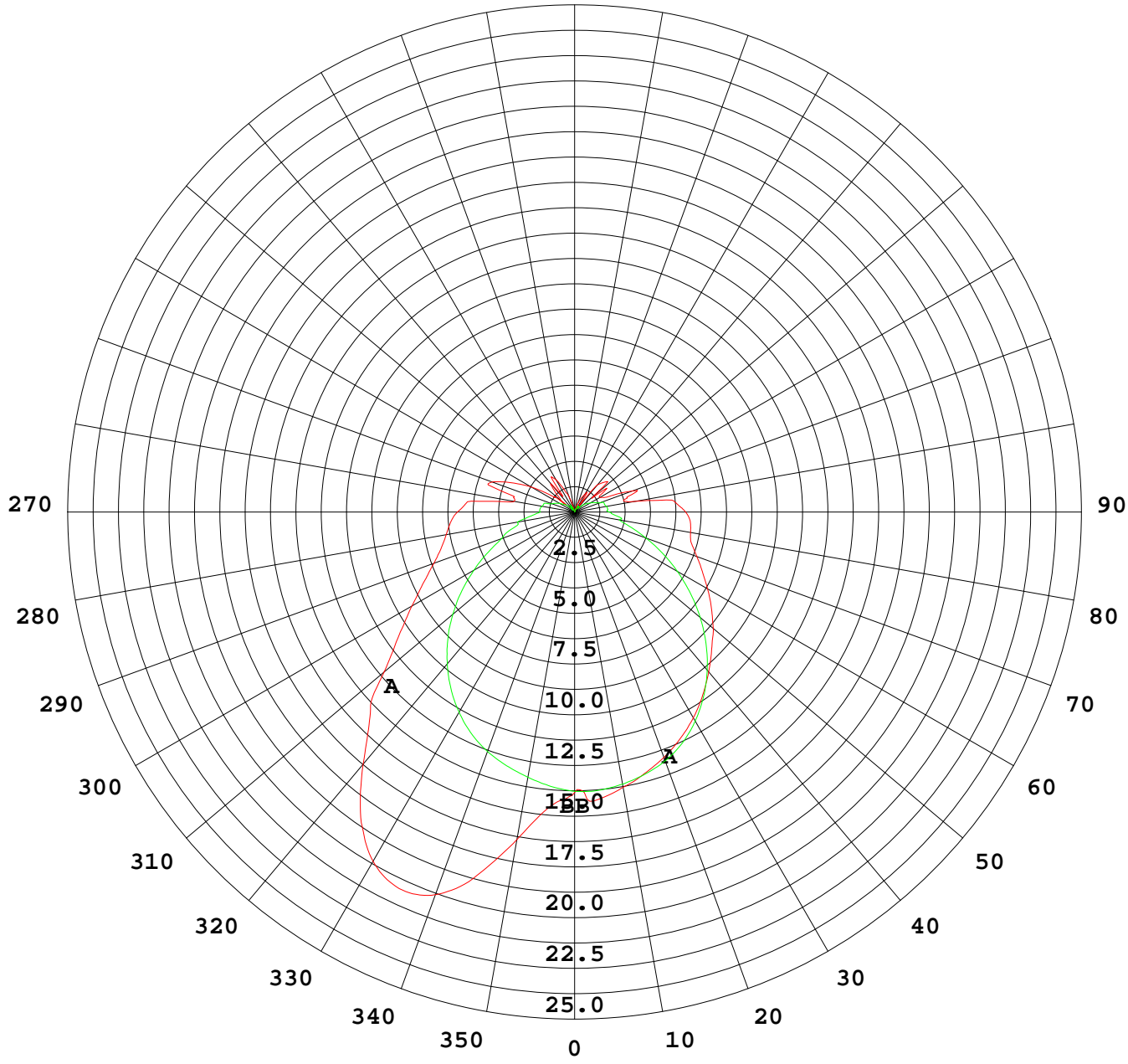
C Range: 0 - 360DEG
 C Interval: 22.5DEG
 Test Speed: HIGH
 Temperature:25.1DEG
 Operators:Wilson
 Test Date:2019-04-09

γ Range: 0 - 180DEG
 γ Interval: 0.5DEG
 Test System:EVERFINE GO-R5000_V2 SYSTEM V2.0.354
 Humidity:60.5%
 Test Distance:2.718m [K=1.0000]
 Remarks: File No.: WT-F-504-3206-01-A

Checker: Near Gao

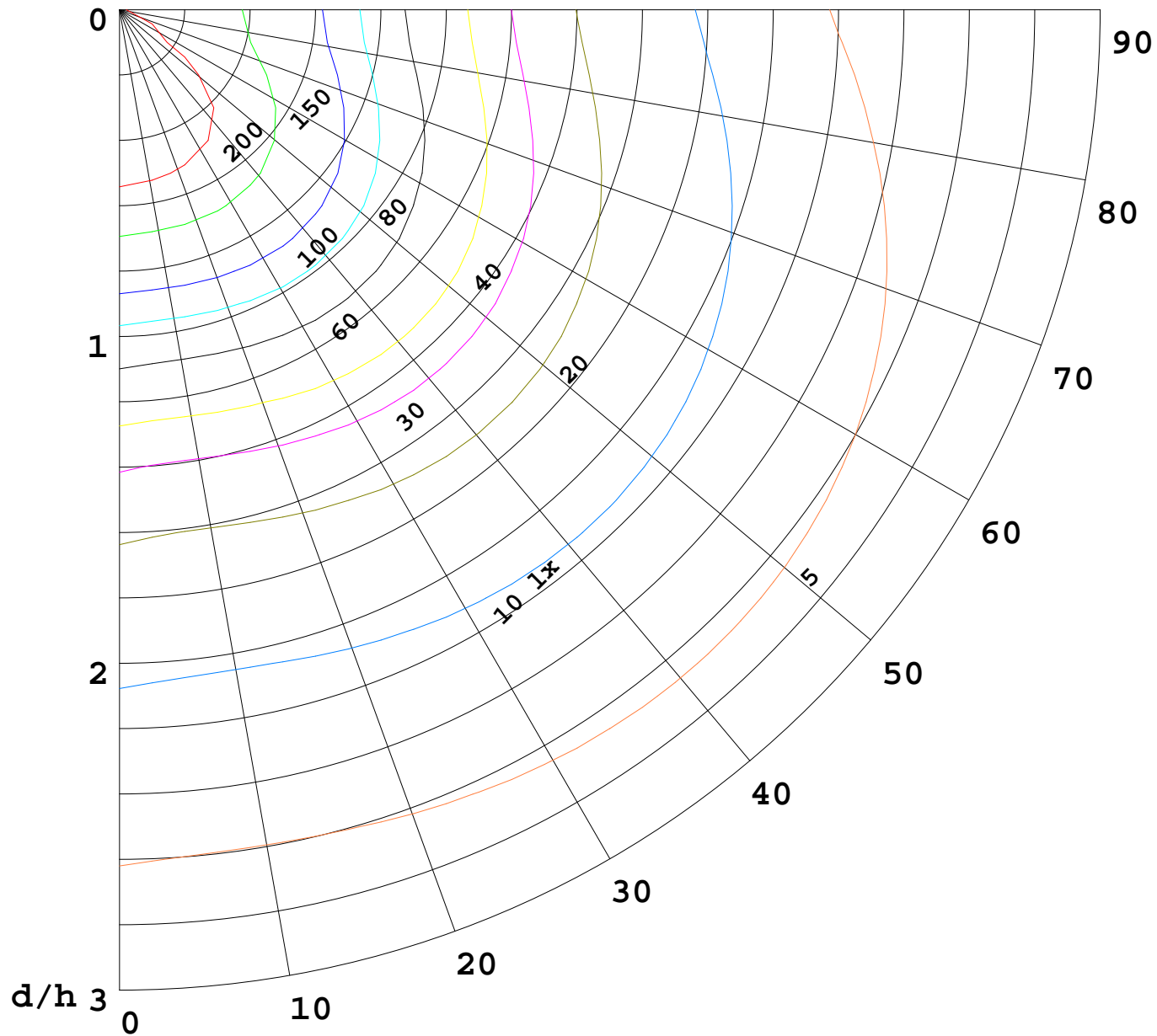
Assessor: Akin Xu

I(cd)



1000 lm

$K = 1$



F = 1000 lm
K = 0.7
Hcc = 0.8 m
Hfc = 0.0 m
Eave = 100 lx

	Pcc	Pw	Pfc
—————	70	50	30
—————	50	30	20

