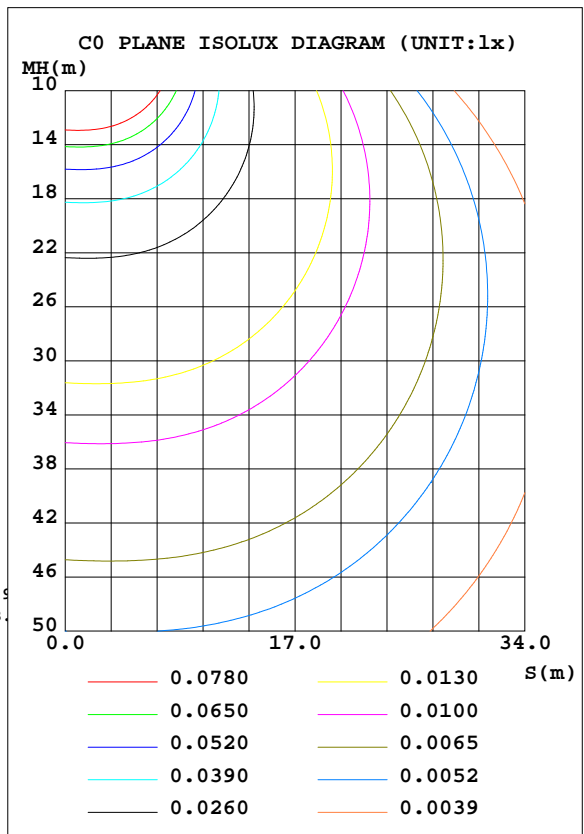
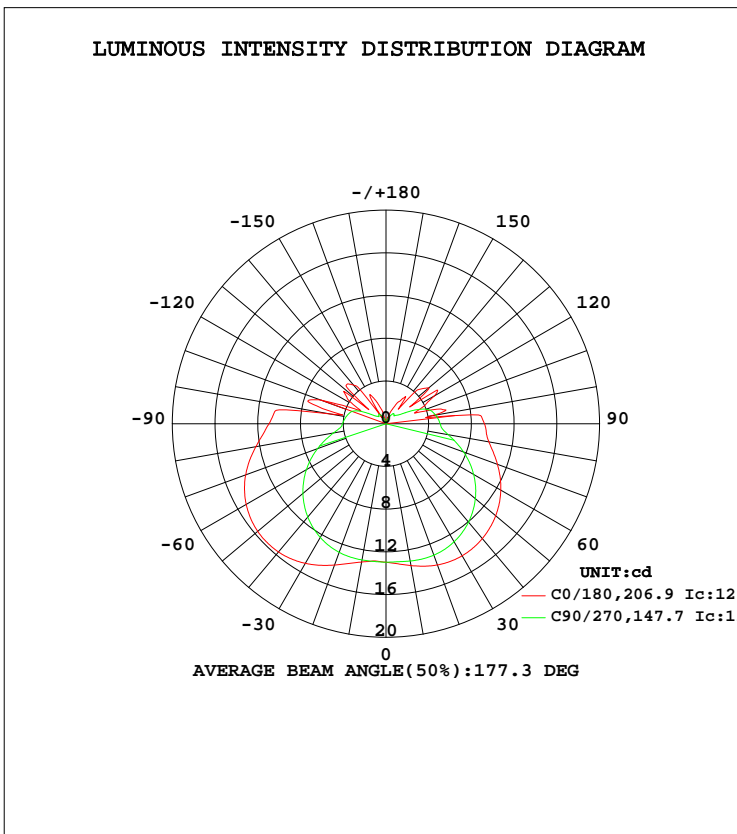


LUMINAIRE PHOTOMETRIC TEST REPORT

Test:U:3.550V I:0.4874A P:1.730W PF:1.000 Freq:0Hz Lamp Flux:98.5787x1 lm		
NAME: 1	TYPE:	WEIGHT:
SPEC.:	DIM.:	SERIAL No.:
MFR.:	SUR.:	Shielding Angle:

DATA OF LAMP		PHOTOMETRIC DATA			
MODEL	GWRE1610	Imax(cd)	15.74	S/MH(C0/180)	1.79
NOMINAL POWER(W)	1.7	LOR(%)	100.0	S/MH(C90/270)	1.41
RATED VOLTAGE(V)	3.55	TOTAL FLUX(lm)	98.579	$\eta$ UP, DN(C0-180)	13.2, 37.4
NOMINAL FLUX(lm)	98.5787	CIE CLASS	SEMI-D.	$\eta$ UP, DN(C180-360)	12.7, 36.7
LAMPS INSIDE	1	$\eta$ up(%)	25.9	CIBSE SHR NOM	1.75
TEST VOLTAGE(V)	3.55	$\eta$ down(%)	74.1	CIBSE SHR MAX	1.75



C Range: 0 - 360DEG  
 C Interval: 22.5DEG  
 Test Speed: HIGH  
 Temperature: 25.1DEG  
 Operators: Wilson  
 Test Date: 2019-04-09

$\gamma$  Range: 0 - 180DEG  
 $\gamma$  Interval: 0.5DEG  
 Test System: EVERFINE GO-R5000\_V2 SYSTEM V2.0.354  
 Humidity: 60.5%  
 Test Distance: 2.718m [K=1.0000]  
 Remarks: File No.: WT-F-504-3206-01-A

Checker: Near Gao

Assessor: Akin Xu

ZONAL FLUX DIAGRAM

ZONAL FLUX DIAGRAM:

γ	C0	C45	C90	C135	C180	C225	C270	C315	γ	Φ zone	Φ total	%lum,lamp
5	13.17	13.09	12.97	12.90	12.89	12.89	12.95	13.07	0- 5	0.3104	0.3104	0.31,0.31
10	13.48	13.31	13.05	13.02	13.15	12.99	12.95	13.26	5- 10	0.9355	1.246	1.26,1.26
15	13.81	13.58	13.11	13.26	13.55	13.18	12.92	13.47	10- 15	1.574	2.820	2.86,2.86
20	14.07	13.83	13.10	13.56	14.08	13.44	12.82	13.64	15- 20	2.221	5.041	5.11,5.11
25	14.23	14.01	12.98	13.89	14.62	13.71	12.61	13.74	20- 25	2.866	7.907	8.02,8.02
30	14.27	14.10	12.76	14.19	15.10	13.94	12.30	13.75	25- 30	3.488	11.40	11.6,11.6
35	14.21	14.07	12.44	14.40	15.45	14.09	11.89	13.64	30- 35	4.068	15.46	15.7,15.7
40	14.03	13.93	12.03	14.51	15.67	14.13	11.40	13.44	35- 40	4.584	20.05	20.3,20.3
45	13.77	13.69	11.52	14.50	15.74	14.06	10.82	13.13	40- 45	5.021	25.07	25.4,25.4
50	13.41	13.35	10.92	14.38	15.68	13.87	10.15	12.73	45- 50	5.365	30.43	30.9,30.9
55	12.95	12.92	10.24	14.13	15.47	13.56	9.417	12.24	50- 55	5.604	36.04	36.6,36.6
60	12.42	12.38	9.477	13.75	15.11	13.13	8.608	11.67	55- 60	5.730	41.77	42.4,42.4
65	11.79	11.75	8.631	13.22	14.62	12.58	7.738	11.01	60- 65	5.739	47.51	48.2,48.2
70	11.10	11.03	7.728	12.58	13.98	11.91	6.820	10.26	65- 70	5.632	53.14	53.9,53.9
75	10.41	10.28	6.795	11.83	13.22	11.14	5.880	9.520	70- 75	5.417	58.55	59.4,59.4
80	9.790	9.588	5.924	11.01	12.37	10.31	4.991	8.834	75- 80	5.121	63.68	64.6,64.6
85	9.438	9.123	5.284	10.22	11.57	9.531	4.311	8.364	80- 85	4.811	68.49	69.5,69.5
90	9.219	8.892	5.081	9.737	10.95	9.039	4.082	8.144	85- 90	4.588	73.07	74.1,74.1
95	8.892	8.611	4.924	9.480	10.56	8.777	3.944	7.865	90- 95	4.427	77.50	78.6,78.6
100	4.318	7.047	4.721	8.492	5.415	7.513	3.799	6.385	95-100	3.749	81.25	82.4,82.4
105	5.346	4.195	4.467	5.008	7.058	5.147	3.626	4.118	100-105	2.842	84.09	85.3,85.3
110	3.039	4.857	4.006	3.300	6.526	3.085	3.393	3.886	105-110	2.364	86.46	87.7,87.7
115	3.977	5.032	3.102	4.131	3.494	3.948	2.837	4.182	110-115	1.939	88.40	89.7,89.7
120	5.210	5.165	2.081	5.103	3.395	4.858	2.007	4.747	115-120	1.845	90.24	91.5,91.5
125	3.039	4.927	1.471	5.423	4.555	5.189	1.353	4.447	120-125	1.865	92.11	93.4,93.4
130	5.237	4.714	1.254	5.362	2.315	4.985	1.102	4.329	125-130	1.662	93.77	95.1,95.1
135	4.603	4.259	1.042	4.990	5.203	4.659	0.9519	3.655	130-135	1.429	95.20	96.6,96.6
140	1.782	3.551	1.182	4.201	4.738	3.959	1.075	3.070	135-140	1.199	96.39	97.8,97.8
145	3.008	2.644	1.178	3.239	1.423	2.873	1.121	2.077	140-145	0.8737	97.27	98.7,98.7
150	2.387	1.864	0.9170	2.344	2.999	1.927	0.8767	1.413	145-150	0.5756	97.84	99.3,99.3
155	1.646	1.301	0.6871	1.785	2.553	1.659	0.6951	0.9094	150-155	0.3892	98.23	99.6,99.6
160	1.067	0.5899	0.4851	0.8751	1.690	0.7929	0.4908	0.3625	155-160	0.2171	98.45	99.9,99.9
165	0.3370	0.1478	0.2612	0.3308	1.044	0.3096	0.2505	0.1254	160-165	0.0917	98.54	100,100
170	0.1402	0.0857	0.0979	0.2821	0.3011	0.3002	0.1276	0.1040	165-170	0.0235	98.57	100,100
175	0.0568	0.0478	0.0448	0.1863	0.2590	0.2188	0.0635	0.0609	170-175	0.0108	98.58	100,100
180	0.0455	0.0503	0.0571	0.0521	0.0448	0.0506	0.0564	0.0505	175-180	0.0023	98.58	100,100
DEG	LUMINOUS INTENSITY:cd									UNIT:lm		

Conical surface Flux(90deg): 25.068 lm

%lum = 25.4%  
%lamp = 25.4%

Conical surface Flux(120deg): 41.767 lm

%lum = 42.4%  
%lamp = 42.4%

C Range: 0 - 360DEG  
C Interval: 22.5DEG  
Test Speed: HIGH  
Temperature:25.1DEG  
Operators:Wilson  
Test Date:2019-04-09

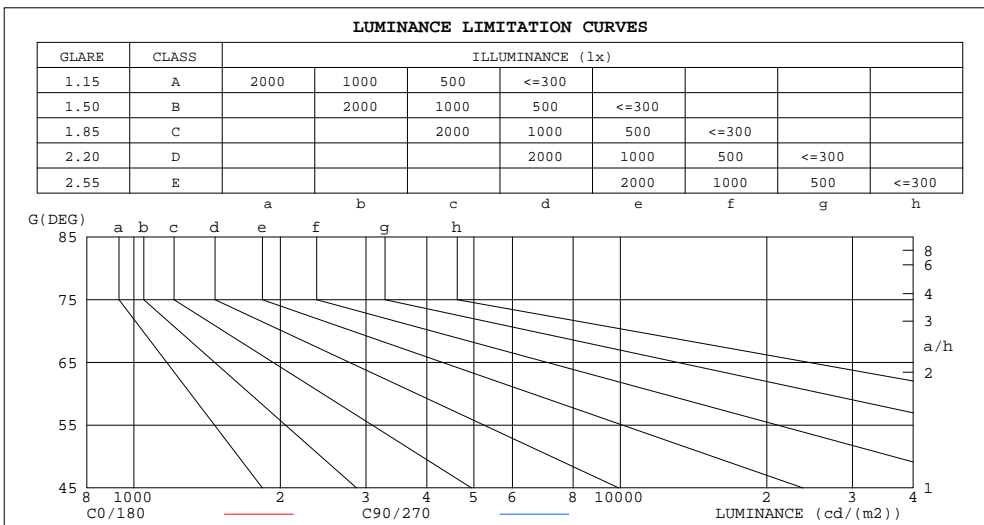
γ Range: 0 - 180DEG  
γ Interval: 0.5DEG  
Test System:EVERFINE GO-R5000\_V2 SYSTEM V2.0.354  
Humidity:60.5%  
Test Distance:2.718m [K=1.0000]  
Remarks: File No.: WT-F-504-3206-01-A

Checker: Near Gao

Assessor: Akin Xu

LUMINANCE LIMITATION CURVES

Test:U:3.550V I:0.4874A P:1.730W PF:1.000 Freq:0Hz Lamp Flux:98.5787x1 lm		
NAME: 1	TYPE:	WEIGHT:
SPEC.:	DIM.:	SERIAL No.:
MFR.:	SUR.:	Shielding Angle:



LUMINANCE cd/(m2)		
G(DEG)	C0/180	C90/270
85	98	54
80	51	31
75	36	24
70	29	20
65	25	18
60	22	17
55	20	16
50	19	15
45	18	15

C Range: 0 - 360DEG  
 C Interval: 22.5DEG  
 Test Speed: HIGH  
 Temperature: 25.1DEG  
 Operators: Wilson  
 Test Date: 2019-04-09

γ Range: 0 - 180DEG  
 γ Interval: 0.5DEG  
 Test System: EVERFINE GO-R5000\_V2 SYSTEM V2.0.354  
 Humidity: 60.5%  
 Test Distance: 2.718m [K=1.0000]  
 Remarks: File No.: WT-F-504-3206-01-A

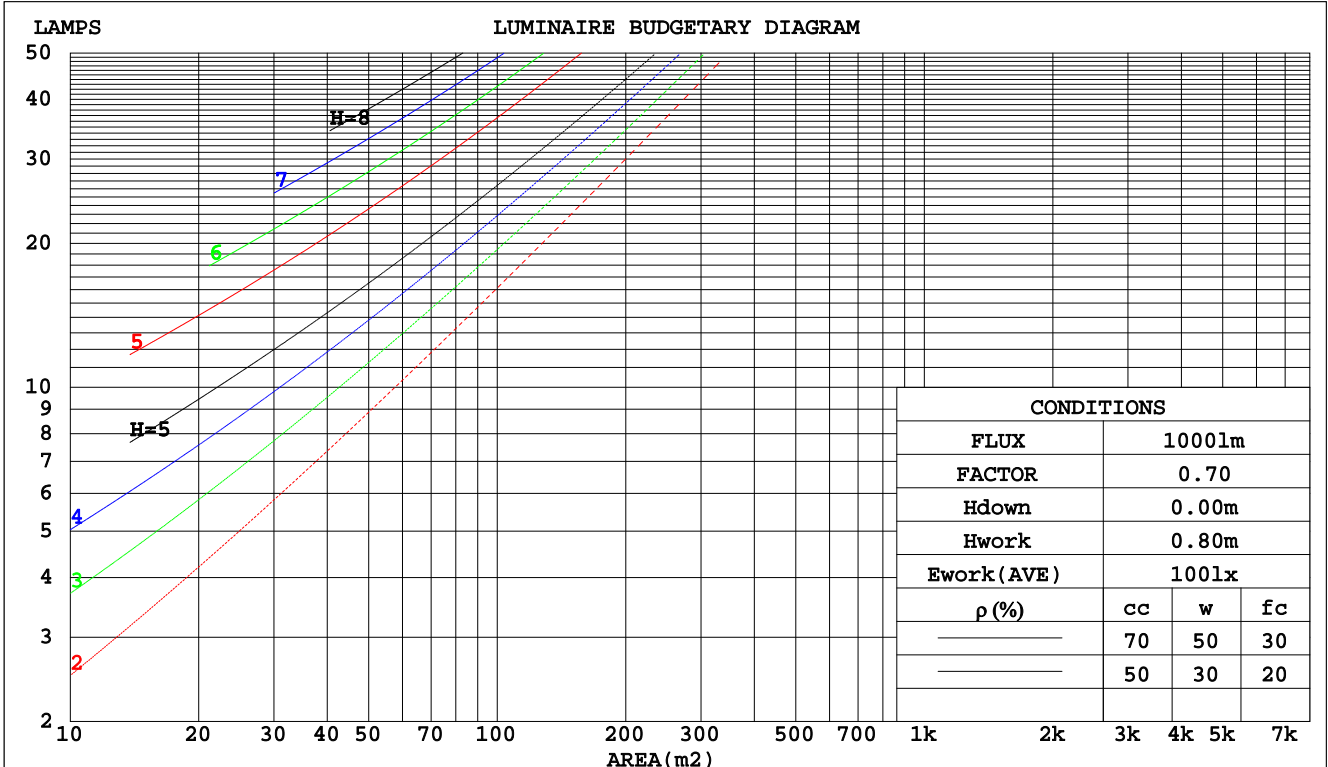
Checker: Near Gao

Assessor: Akin Xu

CU AND LUMINAIRE BUDGETARY ESTIMATE DIAGRAM

Test:U:3.550V I:0.4874A P:1.730W PF:1.000 Freq:0Hz Lamp Flux:98.5787x1 lm		
NAME: 1	TYPE:	WEIGHT:
SPEC.:	DIM.:	SERIAL No.:
MFR.:	SUR.:	Shielding Angle:

pcc	80%			70%			50%			30%			10%			0
	50%	30%	10%	50%	30%	10%	50%	30%	10%	50%	30%	10%	50%	30%	10%	0
pw																
pfc	20%			20%			20%			20%			20%			0
RCR	RCR:Room Cavity Ratio															
	Coefficients of Utilization(CU)															
0.0	1.13	1.13	1.13	1.07	1.07	1.07	.97	.97	.97	.87	.87	.87	.78	.78	.78	.74
1.0	.92	.86	.81	.87	.82	.77	.78	.74	.70	.70	.66	.63	.62	.59	.57	.53
2.0	.78	.69	.62	.74	.66	.60	.66	.60	.54	.58	.54	.49	.52	.48	.44	.41
3.0	.67	.57	.50	.63	.55	.48	.56	.49	.44	.50	.44	.40	.44	.40	.36	.32
4.0	.58	.48	.41	.55	.46	.39	.49	.42	.36	.44	.38	.33	.39	.34	.30	.26
5.0	.51	.42	.34	.49	.40	.33	.44	.36	.30	.39	.33	.28	.34	.29	.25	.22
6.0	.46	.36	.29	.43	.35	.28	.39	.31	.26	.35	.28	.24	.31	.26	.21	.19
7.0	.41	.32	.25	.39	.30	.24	.35	.28	.22	.31	.25	.20	.28	.23	.19	.16
8.0	.37	.28	.22	.35	.27	.21	.32	.25	.20	.29	.22	.18	.26	.20	.16	.14
9.0	.34	.25	.20	.32	.24	.19	.29	.22	.17	.26	.20	.16	.23	.18	.15	.12
10.0	.31	.23	.17	.30	.22	.17	.27	.20	.16	.24	.18	.14	.22	.17	.13	.11



C Range: 0 - 360DEG  
 C Interval: 22.5DEG  
 Test Speed: HIGH  
 Temperature:25.1DEG  
 Operators:Wilson  
 Test Date:2019-04-09

γ Range: 0 - 180DEG  
 γ Interval: 0.5DEG  
 Test System:EVERFINE GO-R5000\_V2 SYSTEM V2.0.354  
 Humidity:60.5%  
 Test Distance:2.718m [K=1.0000]  
 Remarks: File No.: WT-F-504-3206-01-A

Checker: Near Gao

Assessor: Akin Xu

WEC AND CCEC

Test:U:3.550V I:0.4874A P:1.730W PF:1.000 Freq:0Hz Lamp Flux:98.5787x1 lm		
NAME: 1	TYPE:	WEIGHT:
SPEC.:	DIM.:	SERIAL No.:
MFR.:	SUR.:	Shielding Angle:

ρcc	80%			70%			50%			30%			10%			0
ρw	50%	30%	10%	50%	30%	10%	50%	30%	10%	50%	30%	10%	50%	30%	10%	0
ρfc	20%			20%			20%			20%			20%			0
RCR	RCR:Room Cavity Ratio						Wall Exitance Coefficients(WEC)									
0.0																
1.0	.418	.238	.075	.403	.230	.073	.374	.215	.069	.348	.201	.064	.324	.188	.061	
2.0	.353	.194	.059	.340	.187	.058	.314	.174	.054	.290	.163	.051	.268	.151	.048	
3.0	.310	.165	.049	.297	.159	.048	.274	.148	.045	.252	.138	.042	.232	.128	.040	
4.0	.276	.144	.042	.265	.139	.041	.244	.129	.039	.224	.120	.036	.205	.112	.034	
5.0	.250	.127	.037	.239	.123	.036	.220	.114	.034	.202	.106	.032	.185	.099	.030	
6.0	.228	.114	.033	.218	.110	.032	.200	.103	.030	.184	.095	.028	.168	.088	.026	
7.0	.209	.103	.029	.200	.100	.028	.184	.093	.027	.169	.086	.025	.154	.080	.024	
8.0	.193	.094	.027	.185	.091	.026	.170	.085	.024	.156	.079	.023	.143	.073	.021	
9.0	.180	.087	.024	.172	.084	.024	.158	.078	.022	.145	.073	.021	.133	.067	.019	
10.0	.168	.080	.022	.161	.078	.022	.148	.072	.020	.136	.067	.019	.124	.062	.018	

ρcc	80%			70%			50%			30%			10%			0
ρw	50%	30%	10%	50%	30%	10%	50%	30%	10%	50%	30%	10%	50%	30%	10%	0
ρfc	20%			20%			20%			20%			20%			0
RCR	RCR:Room Cavity Ratio						Ceiling Cavity Exitance Coefficients(CCEC)									
0.0	.388	.388	.388	.331	.331	.331	.226	.226	.226	.130	.130	.130	.042	.042	.042	
1.0	.387	.354	.325	.331	.304	.279	.226	.209	.193	.130	.121	.112	.042	.039	.036	
2.0	.381	.332	.291	.326	.286	.251	.223	.198	.175	.129	.115	.103	.041	.037	.033	
3.0	.373	.316	.270	.320	.272	.234	.220	.189	.164	.127	.110	.097	.041	.036	.032	
4.0	.366	.304	.256	.314	.262	.223	.216	.183	.157	.125	.107	.093	.040	.035	.030	
5.0	.358	.294	.247	.307	.254	.215	.212	.178	.152	.123	.104	.090	.040	.034	.030	
6.0	.350	.286	.240	.301	.248	.209	.208	.174	.148	.121	.102	.088	.039	.033	.029	
7.0	.343	.280	.236	.295	.243	.205	.204	.170	.146	.118	.100	.087	.038	.033	.029	
8.0	.336	.274	.232	.290	.238	.202	.200	.167	.143	.117	.099	.086	.038	.032	.028	
9.0	.330	.270	.229	.284	.234	.200	.197	.165	.142	.115	.097	.085	.037	.032	.028	
10.0	.324	.266	.227	.279	.231	.198	.194	.162	.141	.113	.096	.084	.037	.032	.028	

C Range: 0 - 360DEG  
 C Interval: 22.5DEG  
 Test Speed: HIGH  
 Temperature:25.1DEG  
 Operators:Wilson  
 Test Date:2019-04-09

γ Range: 0 - 180DEG  
 γ Interval: 0.5DEG  
 Test System:EVERFINE GO-R5000\_V2 SYSTEM V2.0.354  
 Humidity:60.5%  
 Test Distance:2.718m [K=1.0000]  
 Remarks: File No.: WT-F-504-3206-01-A

Checker: Near Gao

Assessor: Akin Xu

UGR(Unified Glare Rating) Table

Test:U:3.550V I:0.4874A P:1.730W PF:1.000 Freq:0Hz Lamp Flux:98.5787x1 lm										
NAME: 1					TYPE:			WEIGHT:		
SPEC.:					DIM.:			SERIAL No.:		
MFR.:					SUR.:			Shielding Angle:		
ceiling/cavity	0.7	0.7	0.5	0.5	0.3	0.7	0.7	0.5	0.5	0.3
walls	0.5	0.3	0.5	0.3	0.3	0.5	0.3	0.5	0.3	0.3
working plane	0.2	0.2	0.2	0.2	0.2	0.2	0.2	0.2	0.2	0.2
Room dimensions	Viewed crosswise					Viewed endwise				
x = 2H y = 2H	6.2	7.5	6.8	8.1	8.8	5.1	6.4	5.7	7.0	7.7
3H	8.9	10.1	9.5	10.8	11.5	7.4	8.6	8.0	9.2	10.0
4H	10.4	11.5	11.0	12.2	13.0	8.6	9.7	9.2	10.4	11.2
6H	12.0	13.1	12.7	13.8	14.6	9.8	10.9	10.5	11.6	12.4
8H	13.0	14.0	13.6	14.7	15.5	10.5	11.6	11.2	12.3	13.1
12H	14.1	15.1	14.8	15.8	16.6	11.3	12.3	12.0	13.0	13.9
4H 2H	7.0	8.1	7.6	8.8	9.6	6.2	7.4	6.9	8.1	8.9
3H	9.9	10.9	10.6	11.6	12.5	8.7	9.8	9.4	10.5	11.3
4H	11.6	12.5	12.3	13.3	14.1	10.1	11.1	10.8	11.8	12.6
6H	13.4	14.3	14.2	15.0	15.9	11.5	12.4	12.3	13.1	14.0
8H	14.5	15.3	15.2	16.0	16.9	12.3	13.1	13.1	13.9	14.8
12H	15.7	16.4	16.4	17.2	18.1	13.2	13.9	13.9	14.7	15.6
8H 4H	12.1	12.9	12.9	13.7	14.6	11.0	11.8	11.8	12.6	13.5
6H	14.3	15.0	15.1	15.8	16.7	12.8	13.5	13.6	14.2	15.2
8H	15.6	16.2	16.4	17.0	17.9	13.8	14.4	14.5	15.2	16.1
12H	17.0	17.6	17.8	18.4	19.4	14.9	15.4	15.7	16.2	17.2
12H 4H	12.3	13.0	13.0	13.8	14.7	11.3	12.0	12.0	12.8	13.7
6H	14.5	15.2	15.3	16.0	16.9	13.2	13.8	14.0	14.6	15.6
8H	15.9	16.5	16.7	17.3	18.3	14.3	14.9	15.1	15.7	16.7
Variations with the observer position at spacings:										
S = 1.0H	+ 0.1 / - 0.1					+ 0.1 / - 0.1				
1.5H	+ 0.2 / - 0.3					+ 0.2 / - 0.3				
2.0H	+ 0.3 / - 0.4					+ 0.3 / - 0.5				

CIE Pub.117, 98.58 lm Total Lamp Luminous Flux Correct (8log(F/F0) = -8.0)

C Range: 0 - 360DEG  
 C Interval: 22.5DEG  
 Test Speed: HIGH  
 Temperature:25.1DEG  
 Operators:Wilson  
 Test Date:2019-04-09

γ Range: 0 - 180DEG  
 γ Interval: 0.5DEG  
 Test System:EVERFINE GO-R5000\_V2 SYSTEM V2.0.354  
 Humidity:60.5%  
 Test Distance:2.718m [K=1.0000]  
 Remarks: File No.: WT-F-504-3206-01-A

Checker: Near Gao

Assessor: Akin Xu

UTILIZATION FACTORS TABLE

Test:U:3.550V I:0.4874A P:1.730W PF:1.000 Freq:0Hz Lamp Flux:98.5787x1 lm		
NAME: 1	TYPE:	WEIGHT:
SPEC.:	DIM.:	SERIAL No.:
MFR.:	SUR.:	Shielding Angle:

REFLECTANCE										
Ceiling	0.8	0.8	0.8	0.7	0.7	0.7	0.5	0.5	0.5	0
Walls	0.7	0.5	0.3	0.7	0.5	0.3	0.7	0.5	0.3	0
Working plane	0.2	0.2	0.2	0.2	0.2	0.2	0.2	0.2	0.2	0
ROOM INDEX	UTILIZATION FACTORS(PERCENT) $k(RI) \times RCR = 5$									
k = 0.60	43	30	22	41	29	22	39	28	21	14
0.80	52	38	29	50	37	29	46	35	28	19
1.00	59	45	36	57	44	36	53	44	34	25
1.25	66	52	43	63	51	42	58	48	40	29
1.50	71	58	49	68	56	47	62	52	45	33
2.00	79	67	58	75	64	56	69	59	52	39
2.50	84	72	64	80	70	61	72	64	57	43
3.00	88	77	69	83	74	66	76	68	62	46
4.00	93	84	76	88	80	73	80	73	68	51
5.00	96	88	81	91	84	78	82	77	72	54
ROOM INDEX	UF(total)									Direct
According to DIN EN 13032-2 2004			Suspended				SHRNM = 1.25			

C Range: 0 - 360DEG  
 C Interval: 22.5DEG  
 Test Speed: HIGH  
 Temperature:25.1DEG  
 Operators:Wilson  
 Test Date:2019-04-09

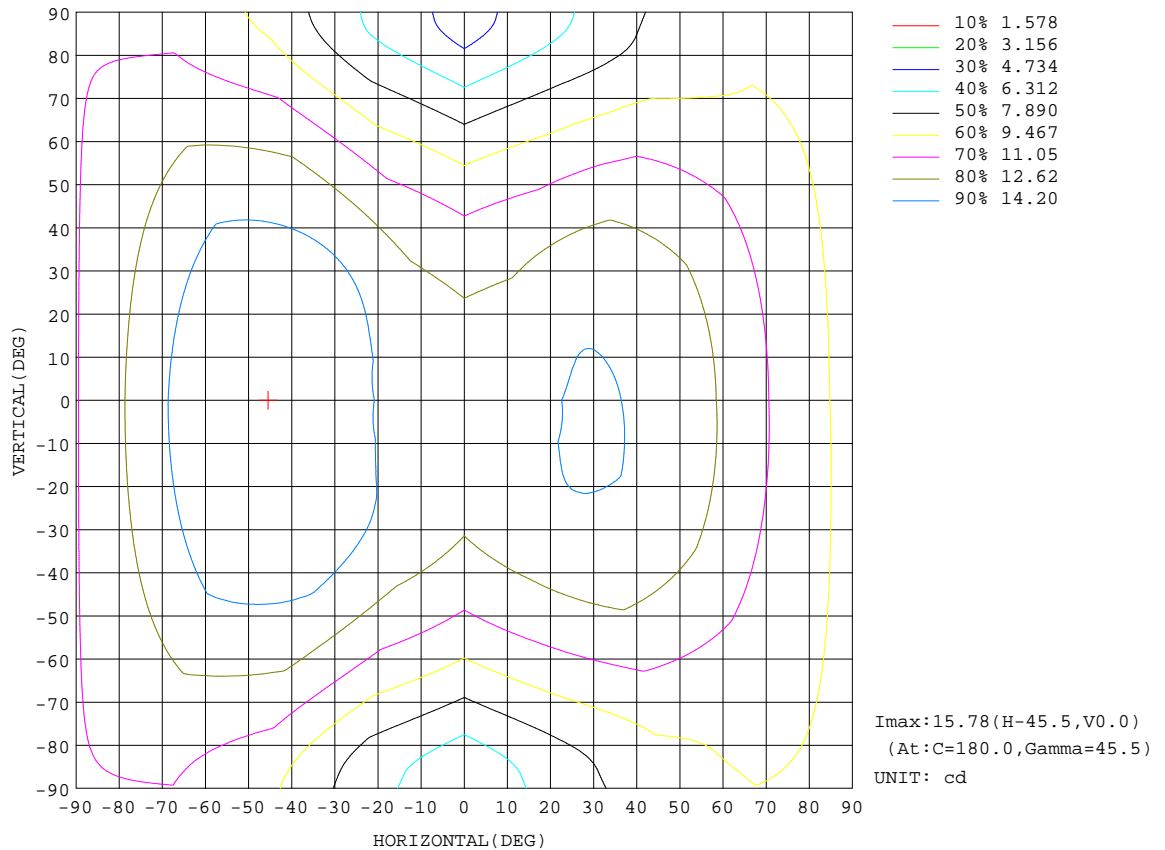
$\gamma$  Range: 0 - 180DEG  
 $\gamma$  Interval: 0.5DEG  
 Test System:EVERFINE GO-R5000\_V2 SYSTEM V2.0.354  
 Humidity:60.5%  
 Test Distance:2.718m [K=1.0000]  
 Remarks: File No.: WT-F-504-3206-01-A

Checker: Near Gao

Assessor: Akin Xu

ISOCANDELA DIAGRAM

Test:U:3.550V I:0.4874A P:1.730W PF:1.000 Freq:0Hz Lamp Flux:98.5787x1 lm		
NAME: 1	TYPE:	WEIGHT:
SPEC.:	DIM.:	SERIAL No.:
MFR.:	SUR.:	Shielding Angle:



C Range: 0 - 360DEG  
 C Interval: 22.5DEG  
 Test Speed: HIGH  
 Temperature: 25.1DEG  
 Operators: Wilson  
 Test Date: 2019-04-09

$\gamma$  Range: 0 - 180DEG  
 $\gamma$  Interval: 0.5DEG  
 Test System: EVERFINE GO-R5000\_V2 SYSTEM V2.0.354  
 Humidity: 60.5%  
 Test Distance: 2.718m [K=1.0000]  
 Remarks: File No.: WT-F-504-3206-01-A

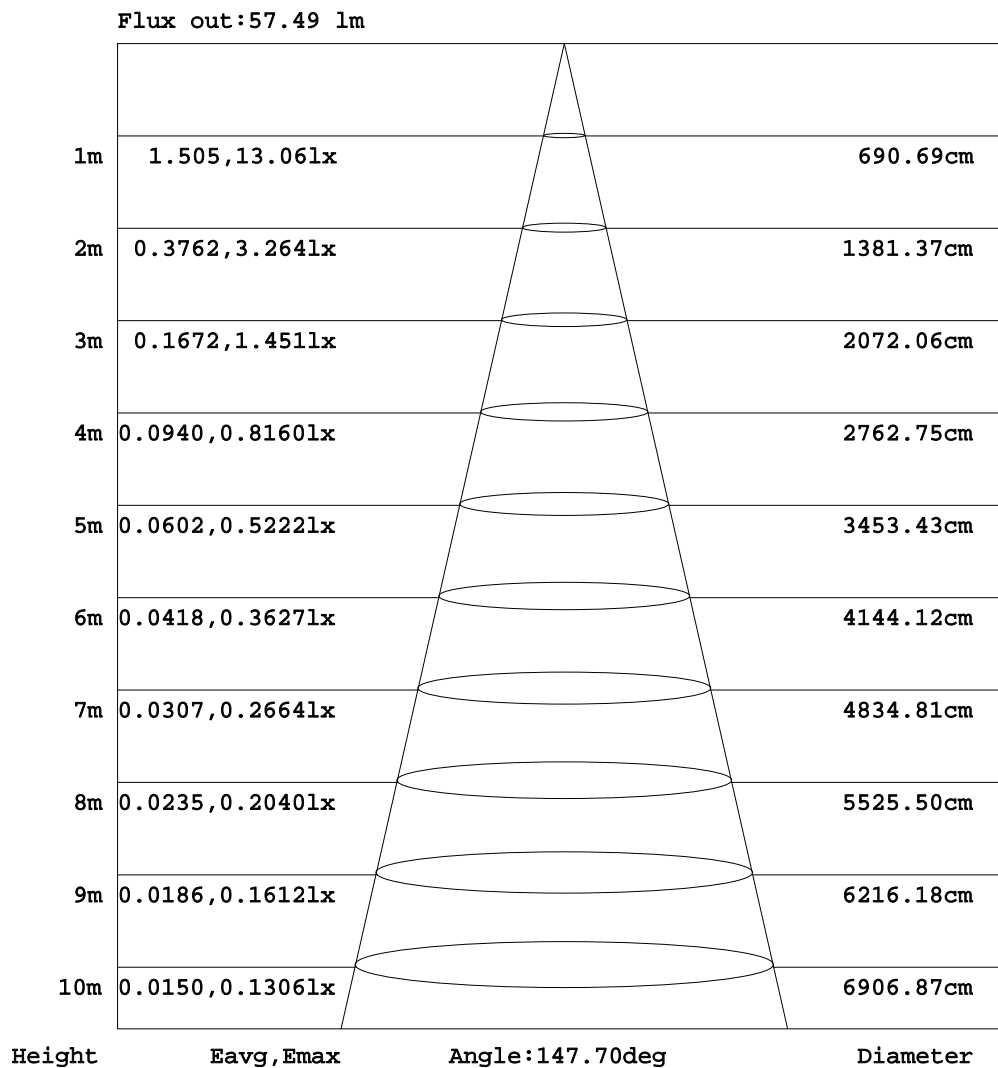
Checker: Near Gao

Assessor: Akin Xu



AAI Figure

Test:U:3.550V I:0.4874A P:1.730W PF:1.000 Freq:0Hz Lamp Flux:98.5787x1 lm		
NAME: 1	TYPE:	WEIGHT:
SPEC.:	DIM.:	SERIAL No.:
MFR.:	SUR.:	Shielding Angle:



Note:The Curves indicate the illuminated area and the average illumination when the luminaire is at different distance.

C Range: 0 - 360DEG  
 C Interval: 22.5DEG  
 Test Speed: HIGH  
 Temperature:25.1DEG  
 Operators:Wilson  
 Test Date:2019-04-09

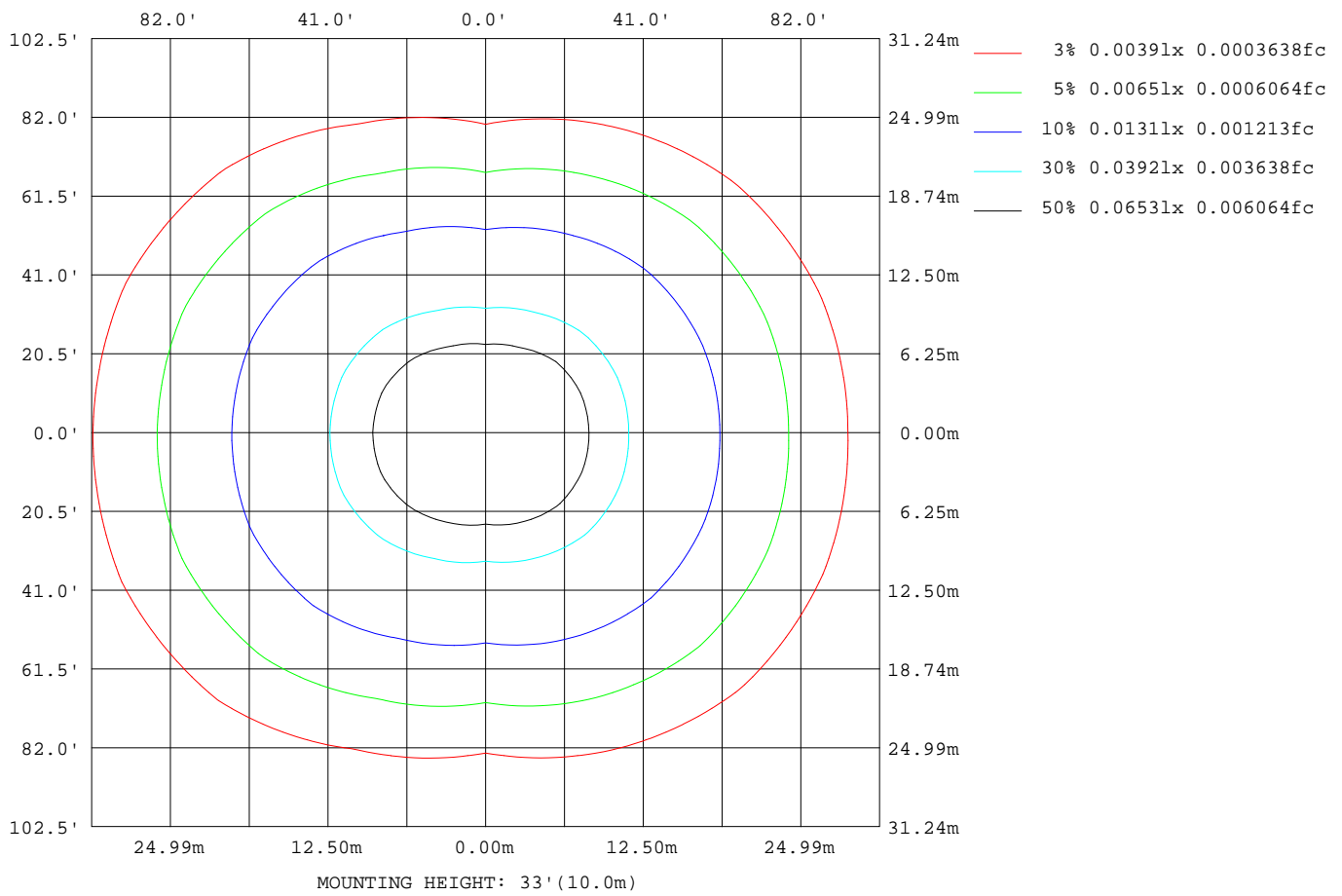
γ Range: 0 - 180DEG  
 γ Interval: 0.5DEG  
 Test System:EVERFINE GO-R5000\_V2 SYSTEM V2.0.354  
 Humidity:60.5%  
 Test Distance:2.718m [K=1.0000]  
 Remarks: File No.: WT-F-504-3206-01-A

Checker: Near Gao

Assessor: Akin Xu

ISOLUX DIAGRAM

Test:U:3.550V I:0.4874A P:1.730W PF:1.000 Freq:0Hz Lamp Flux:98.5787x1 lm		
NAME: 1	TYPE:	WEIGHT:
SPEC.:	DIM.:	SERIAL No.:
MFR.:	SUR.:	Shielding Angle:



C Range: 0 - 360DEG  
 C Interval: 22.5DEG  
 Test Speed: HIGH  
 Temperature: 25.1DEG  
 Operators: Wilson  
 Test Date: 2019-04-09

γ Range: 0 - 180DEG  
 γ Interval: 0.5DEG  
 Test System: EVERFINE GO-R5000\_V2 SYSTEM V2.0.354  
 Humidity: 60.5%  
 Test Distance: 2.718m [K=1.0000]  
 Remarks: File No.: WT-F-504-3206-01-A

Checker: Near Gao

Assessor: Akin Xu

LED Avg.L Report

Test:U:3.550V I:0.4874A P:1.730W PF:1.000 Freq:0Hz Lamp Flux:98.5787x1 lm		
NAME: 1	TYPE:	WEIGHT:
SPEC.:	DIM.:	SERIAL No.:
MFR.:	SUR.:	Shielding Angle:

AvgL	cd/m2
L_0~180(65)av	28
L_0~180(75)av	41
L_0~180(85)av	109
L_90~270(65)av	17
L_90~270(75)av	22
L_90~270(85)av	50
L_45(65)av	26
L_45(75)av	37
L_45(85)av	96

Standard: GB/T 29293-2012

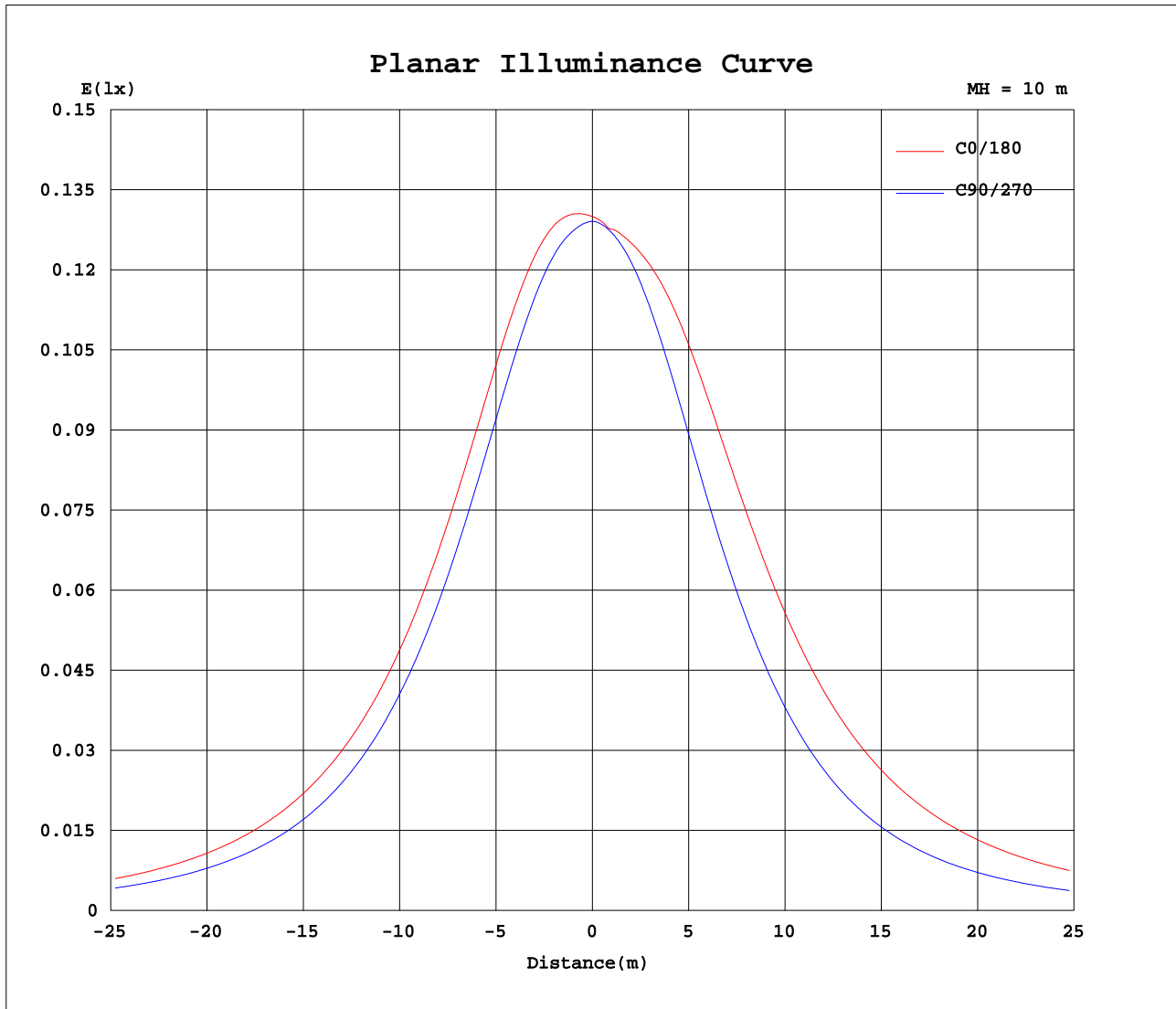
C Range: 0 - 360DEG  
 C Interval: 22.5DEG  
 Test Speed: HIGH  
 Temperature:25.1DEG  
 Operators:Wilson  
 Test Date:2019-04-09

γ Range: 0 - 180DEG  
 γ Interval: 0.5DEG  
 Test System:EVERFINE GO-R5000\_V2 SYSTEM V2.0.354  
 Humidity:60.5%  
 Test Distance:2.718m [K=1.0000]  
 Remarks: File No.: WT-F-504-3206-01-A

Checker: Near Gao

Assessor: Akin Xu

Planar Illuminance Curve



C Range: 0 - 360DEG  
 C Interval: 22.5DEG  
 Test Speed: HIGH  
 Temperature: 25.1DEG  
 Operators: Wilson  
 Test Date: 2019-04-09

γ Range: 0 - 180DEG  
 γ Interval: 0.5DEG  
 Test System: EVERFINE GO-R5000\_V2 SYSTEM V2.0.354  
 Humidity: 60.5%  
 Test Distance: 2.718m [K=1.0000]  
 Remarks: File No.: WT-F-504-3206-01-A

Checker: Near Gao

Assessor: Akin Xu

LUMINOUS DISTRIBUTION INTENSITY DATA

Test:U:3.550V I:0.4874A P:1.730W PF:1.000 Freq:0Hz Lamp Flux:98.5787x1 lm		
NAME: 1	TYPE:	WEIGHT:
SPEC.:	DIM.:	SERIAL No.:
MFR.:	SUR.:	Shielding Angle:

Table--1

UNIT: cd

C( DEG) γ (DEG)	0	22.5	45	67.5	90	112.5	135	157.5	180	202.5	225	247.5	270	292.5	315	337.5			
0	13.0	13.0	13.0	13.0	13.0	13.0	13.0	13.0	13.0	13.0	13.0	13.0	13.0	13.0	13.0	13.0			
5	13.2	13.1	13.1	13.0	13.0	13.1	12.9	12.9	12.9	12.9	12.9	12.9	12.9	12.9	13.0	13.1	13.1		
10	13.5	13.4	13.3	13.1	13.1	13.2	13.0	13.1	13.1	13.1	13.0	12.9	13.0	13.0	13.3	13.4			
15	13.8	13.7	13.6	13.3	13.1	13.4	13.3	13.4	13.6	13.4	13.2	13.0	12.9	13.0	13.5	13.7			
20	14.1	14.0	13.8	13.4	13.1	13.5	13.6	13.9	14.1	13.9	13.4	13.0	12.8	13.0	13.6	13.9			
25	14.2	14.2	14.0	13.4	13.0	13.6	13.9	14.4	14.6	14.4	13.7	12.9	12.6	12.9	13.7	14.1			
30	14.3	14.3	14.1	13.3	12.8	13.5	14.2	14.9	15.1	14.8	13.9	12.8	12.3	12.7	13.7	14.2			
35	14.2	14.3	14.1	13.2	12.4	13.4	14.4	15.3	15.5	15.1	14.1	12.6	11.9	12.5	13.6	14.1			
40	14.0	14.2	13.9	12.9	12.0	13.1	14.5	15.5	15.7	15.4	14.1	12.3	11.4	12.2	13.4	13.9			
45	13.8	13.9	13.7	12.5	11.5	12.8	14.5	15.6	15.7	15.4	14.1	11.9	10.8	11.7	13.1	13.7			
50	13.4	13.6	13.4	12.1	10.9	12.3	14.4	15.6	15.7	15.4	13.9	11.4	10.2	11.3	12.7	13.3			
55	13.0	13.2	12.9	11.5	10.2	11.8	14.1	15.4	15.5	15.1	13.6	10.9	9.42	10.7	12.2	12.9			
60	12.4	12.7	12.4	10.9	9.48	11.1	13.7	15.1	15.1	14.8	13.1	10.2	8.61	10.06	11.7	12.4			
65	11.8	12.1	11.7	10.2	8.63	10.4	13.2	14.6	14.6	14.3	12.6	9.54	7.74	9.37	11.0	11.7			
70	11.1	11.4	11.0	9.44	7.73	9.54	12.6	14.0	14.0	13.7	11.9	8.76	6.82	8.62	10.3	11.1			
75	10.4	10.7	10.3	8.62	6.80	8.66	11.8	13.3	13.2	12.9	11.1	7.93	5.88	7.82	9.52	10.4			
80	9.79	10.1	9.59	7.83	5.92	7.81	11.0	12.4	12.4	12.1	10.3	7.09	4.99	7.03	8.83	9.73			
85	9.44	9.70	9.12	7.25	5.28	7.19	10.2	11.6	11.6	11.2	9.53	6.40	4.31	6.37	8.36	9.36			
90	9.22	9.43	8.89	7.02	5.08	6.94	9.74	11.0	10.9	10.6	9.04	6.10	4.08	6.07	8.14	9.12			
95	8.89	8.47	8.61	6.77	4.92	6.67	9.48	10.6	10.6	10.3	8.78	5.92	3.94	5.91	7.87	8.81			
100	4.32	4.71	7.05	6.38	4.72	6.29	8.49	4.92	5.42	4.86	7.51	5.68	3.80	5.67	6.39	4.06			
105	5.35	3.74	4.19	5.37	4.47	5.44	5.01	6.48	7.06	6.42	5.15	4.74	3.63	4.67	4.12	4.69			
110	3.04	3.07	4.86	4.38	4.01	4.43	3.30	4.40	6.53	4.50	3.08	4.50	3.39	4.47	3.89	2.57			
115	3.98	4.68	5.03	3.76	3.10	3.62	4.13	2.64	3.49	2.51	3.95	3.64	2.84	3.66	4.18	3.86			
120	5.21	6.11	5.17	3.00	2.08	2.72	5.10	4.07	3.40	3.98	4.86	2.90	2.01	3.03	4.75	5.28			
125	3.04	6.05	4.93	2.71	1.47	2.39	5.42	4.99	4.56	5.08	5.19	2.51	1.35	2.79	4.45	5.63			
130	5.24	4.62	4.71	2.58	1.25	2.24	5.36	5.07	2.32	4.58	4.99	2.41	1.10	2.73	4.33	3.64			
135	4.60	4.16	4.26	2.50	1.04	2.09	4.99	4.84	5.20	4.05	4.66	2.24	0.95	2.63	3.66	3.54			
140	1.78	3.34	3.55	2.43	1.18	2.01	4.20	4.45	4.74	4.24	3.96	2.21	1.08	2.47	3.07	2.90			
145	3.01	2.48	2.64	2.06	1.18	1.66	3.24	2.19	1.42	2.48	2.87	1.89	1.12	2.12	2.08	2.37			
150	2.39	1.71	1.86	1.49	0.92	1.18	2.34	2.35	3.00	2.49	1.93	1.38	0.88	1.56	1.41	1.57			
155	1.65	1.10	1.30	0.93	0.69	0.82	1.79	1.56	2.55	1.53	1.66	0.97	0.70	0.99	0.91	1.06			
160	1.07	0.70	0.59	0.55	0.49	0.54	0.88	1.19	1.69	1.05	0.79	0.66	0.49	0.64	0.36	0.64			
165	0.34	0.12	0.15	0.27	0.26	0.23	0.33	0.35	1.04	0.36	0.31	0.39	0.25	0.35	0.13	0.14			
170	0.14	0.11	0.09	0.10	0.10	0.09	0.28	0.35	0.30	0.35	0.30	0.24	0.13	0.14	0.10	0.11			
175	0.06	0.05	0.05	0.05	0.04	0.05	0.19	0.22	0.26	0.25	0.22	0.08	0.06	0.13	0.06	0.05			
180	0.05	0.05	0.05	0.05	0.06	0.06	0.05	0.05	0.04	0.05	0.05	0.05	0.06	0.06	0.05	0.05			

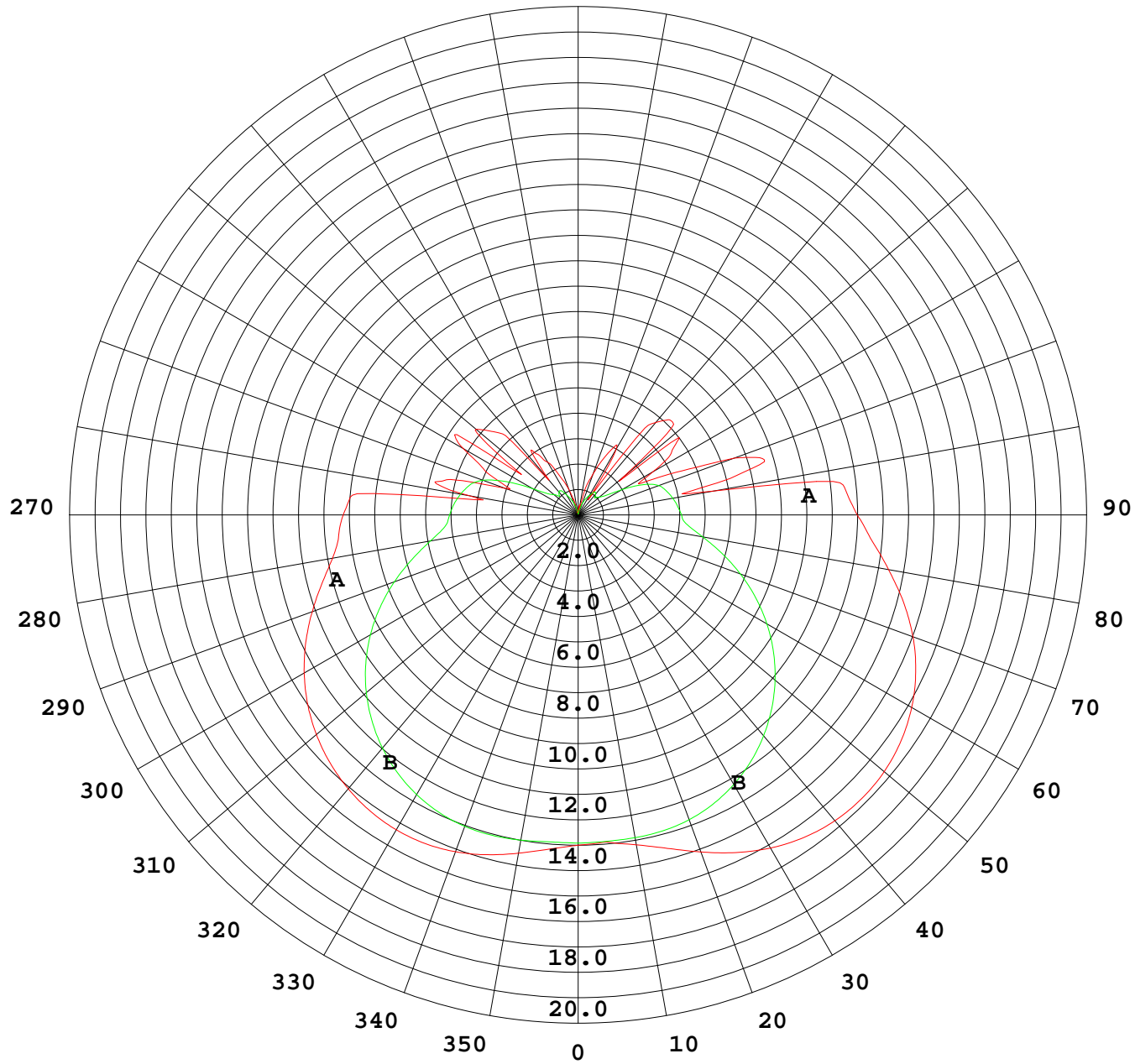
C Range: 0 - 360DEG  
 C Interval: 22.5DEG  
 Test Speed: HIGH  
 Temperature:25.1DEG  
 Operators:Wilson  
 Test Date:2019-04-09

γ Range: 0 - 180DEG  
 γ Interval: 0.5DEG  
 Test System:EVERFINE GO-R5000\_V2 SYSTEM V2.0.354  
 Humidity:60.5%  
 Test Distance:2.718m [K=1.0000]  
 Remarks: File No.: WT-F-504-3206-01-A

Checker: Near Gao

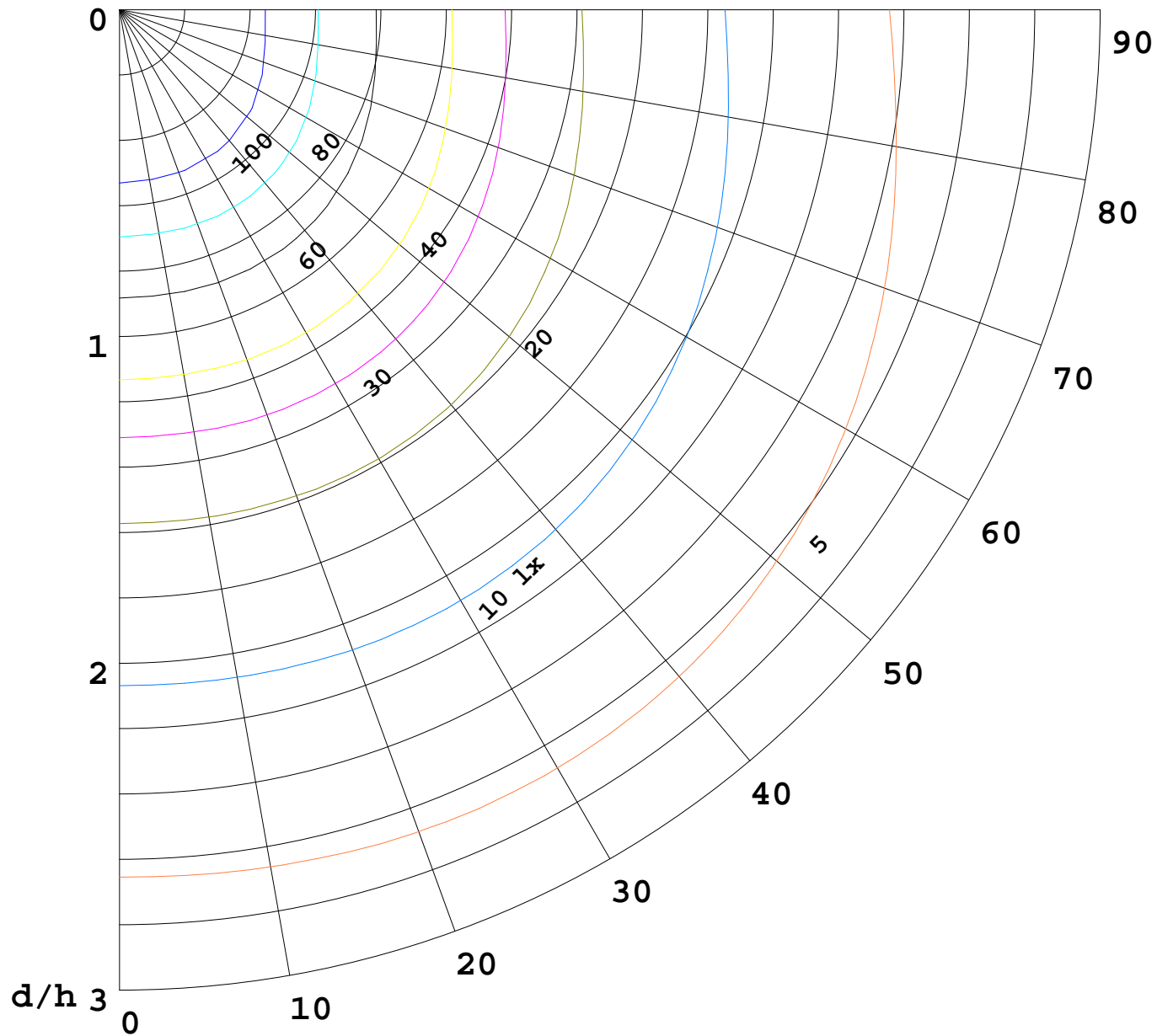
Assessor: Akin Xu

I(cd)



1000 lm

$K = 1$



**F** = 1000 lm  
**K** = 0.7  
**Hcc** = 0.8 m  
**Hfc** = 0.0 m  
**Eave** = 100 lx

	<b>Pcc</b>	<b>Pw</b>	<b>Pfc</b>
—————	70	50	30
—————	50	30	20

