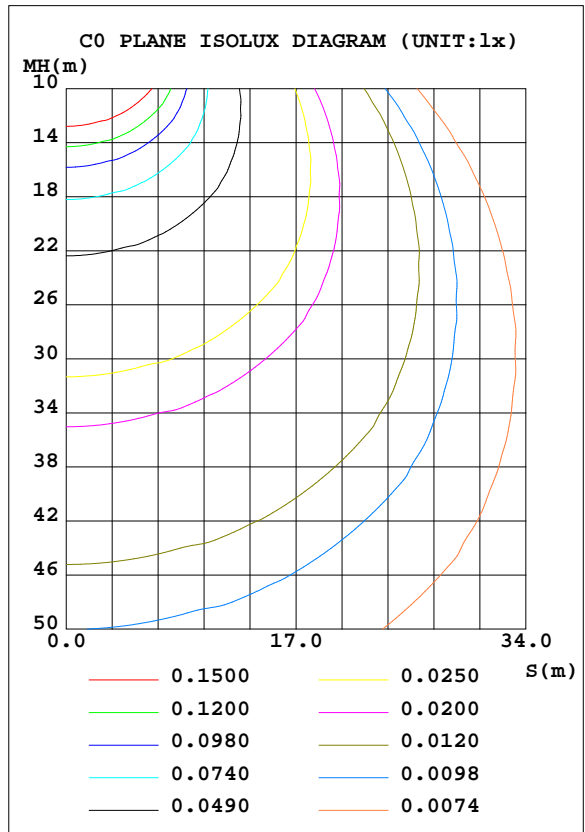
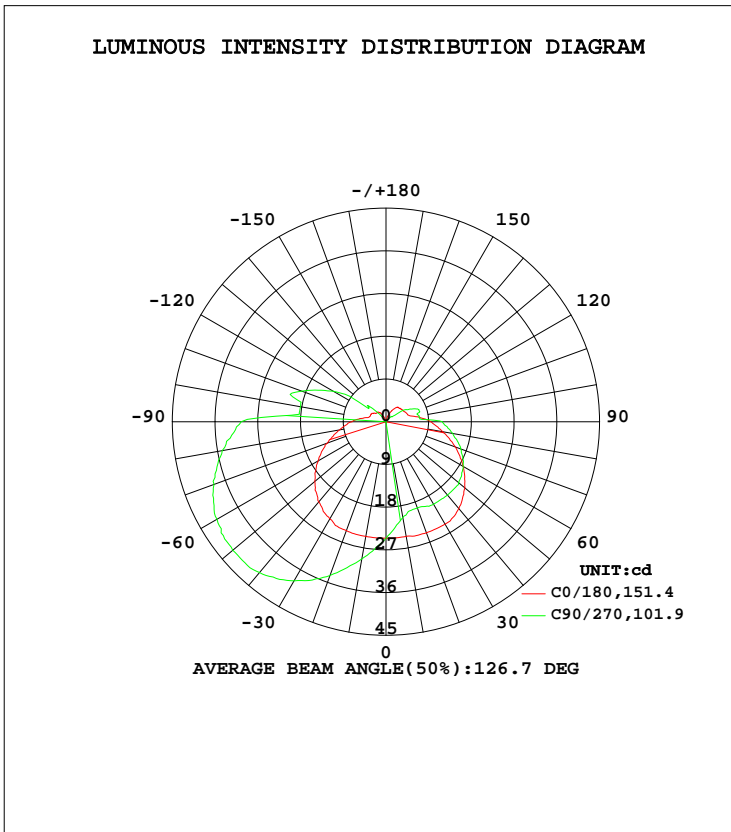


LUMINAIRE PHOTOMETRIC TEST REPORT

Test:U:0V I:0A P:0W PF:0.0000 Freq:0Hz Lamp Flux:192.066x1 lm		
NAME: Emergency Exit Luminaire	TYPE:LED	WEIGHT:N/A
SPEC.:N/A	DIM.:	SERIAL No.:N/A
MFR.: CETRAM LIMITED	SUR.:	Shielding Angle:N/A

DATA OF LAMP		PHOTOMETRIC DATA			
MODEL	CTRE1609	Imax(cd)	42.11	S/MH(C0/180)	1.44
NOMINAL POWER(W)		LOR(%)	100.0	S/MH(C90/270)	2.26
RATED VOLTAGE(V)		TOTAL FLUX(lm)	192.07	η UP, DN(C0-180)	7.3,29.6
NOMINAL FLUX(lm)	192.066	CIE CLASS	SEMI-D.	η UP, DN(C180-360)	12.6,50.4
LAMPS INSIDE	1	η up(%)	20.0	CIBSE SHR NOM	1.75
TEST VOLTAGE(V)		η down(%)	80.0	CIBSE SHR MAX	1.75



C Range: 0 - 360DEG
 C Interval: 22.5DEG
 Test Speed: HIGH
 Temperature:24.5DEG
 Operators:William
 Test Date:2018-09-19

γ Range: 0 - 180DEG
 γ Interval: 1.0DEG
 Test System:EVERFINE GO-R5000_V2 SYSTEM V2.0.366
 Humidity:65.7%
 Test Distance:26.000m [K=1.3825]
 Remarks:

ZONAL FLUX DIAGRAM

ZONAL FLUX DIAGRAM:

γ	C0	C45	C90	C135	C180	C225	C270	C315	γ	Φ zone	Φ total	%lum, lamp
10	24.54	21.93	20.51	21.64	24.54	28.16	29.35	28.10	0- 10	2.360	2.360	1.23,1.23
20	24.90	20.49	19.34	20.34	24.40	31.85	34.45	31.92	10- 20	7.231	9.591	4.99,4.99
30	24.90	20.55	20.07	20.19	23.66	34.96	38.69	35.26	20- 30	12.38	21.97	11.4,11.4
40	23.89	20.84	20.14	20.19	22.07	36.40	41.46	37.13	30- 40	17.35	39.32	20.5,20.5
50	21.71	20.92	20.00	20.19	19.59	36.33	42.11	37.06	40- 50	21.39	60.71	31.6,31.6
60	18.81	20.12	18.76	19.33	16.48	35.25	41.09	35.90	50- 60	24.04	84.75	44.1,44.1
70	15.54	18.32	16.72	17.52	13.14	32.85	38.54	33.58	60- 70	24.75	109.5	57,57
80	12.13	15.85	14.31	14.99	9.940	29.31	35.03	29.89	70- 80	23.48	133.0	69.2,69.2
90	9.444	13.47	11.90	12.45	7.187	25.43	30.54	25.76	80- 90	20.72	153.7	80,80
100	6.319	7.895	7.152	7.460	4.788	14.39	18.32	14.90	90-100	13.90	167.6	87.3,87.3
110	4.792	5.434	7.444	5.648	3.558	11.29	18.89	11.43	100-110	9.785	177.4	92.4,92.4
120	4.429	3.767	5.116	3.695	3.485	7.380	12.90	7.449	110-120	7.193	184.6	96.1,96.1
130	4.141	2.606	1.679	2.395	2.759	3.388	4.683	3.541	120-130	4.121	188.7	98.2,98.2
140	3.922	1.809	0.7300	1.448	2.685	1.013	1.675	1.230	130-140	2.041	190.7	99.3,99.3
150	2.981	1.665	0	1.086	1.813	0.7925	0	0.4299	140-150	0.9056	191.6	99.8,99.8
160	1.529	0.8710	0	0.5794	0.5072	0.0717	0	0	150-160	0.3674	192.0	100,100
170	0.3630	0.0740	0	0	0	0	0	0	160-170	0.0612	192.1	100,100
180	0	0	0	0	0	0	0	0	170-180	0.0014	192.1	100,100
DEG	LUMINOUS INTENSITY:cd									UNIT:lm		

Conical surface Flux(90deg): 49.593 lm

%lum = 25.8%
%lamp = 25.8%

Conical surface Flux(120deg): 84.748 lm

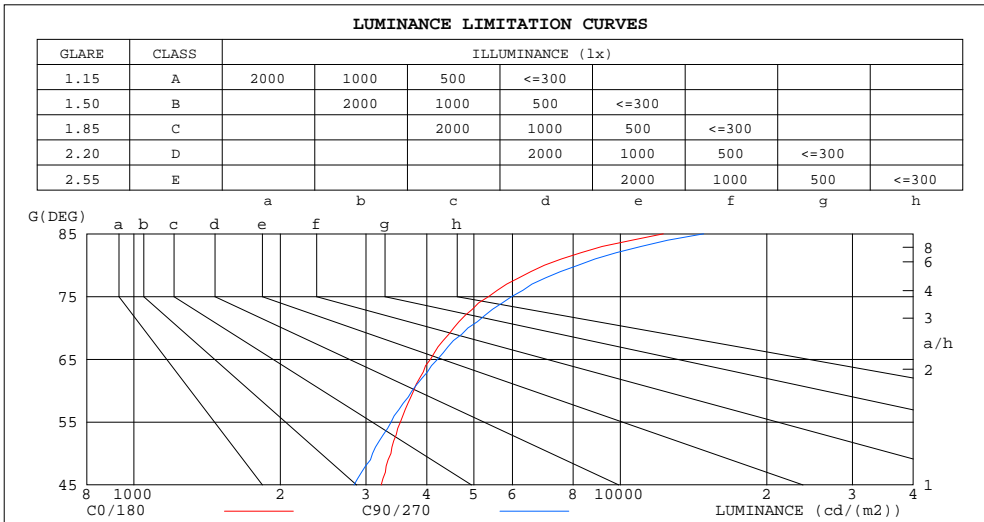
%lum = 44.1%
%lamp = 44.1%

C Range: 0 - 360DEG
C Interval: 22.5DEG
Test Speed: HIGH
Temperature:24.5DEG
Operators:William
Test Date:2018-09-19

γ Range: 0 - 180DEG
γ Interval: 1.0DEG
Test System:EVERFINE GO-R5000_V2 SYSTEM V2.0.366
Humidity:65.7%
Test Distance:26.000m [K=1.3825]
Remarks:

LUMINANCE LIMITATION CURVES

Test:U:0V I:0A P:0W PF:0.0000 Freq:0Hz Lamp Flux:192.066x1 lm		
NAME: Emergency Exit Luminaire	TYPE:LED	WEIGHT:N/A
SPEC.:N/A	DIM.:	SERIAL No.:N/A
MFR.: CETRAM LIMITED	SUR.:	Shielding Angle:N/A



LUMINANCE cd/(m2)		
G(DEG)	C0/180	C90/270
85	12251	14828
80	6982	8194
75	5359	5977
70	4543	4861
65	4071	4208
60	3760	3732
55	3532	3380
50	3377	3095
45	3225	2833

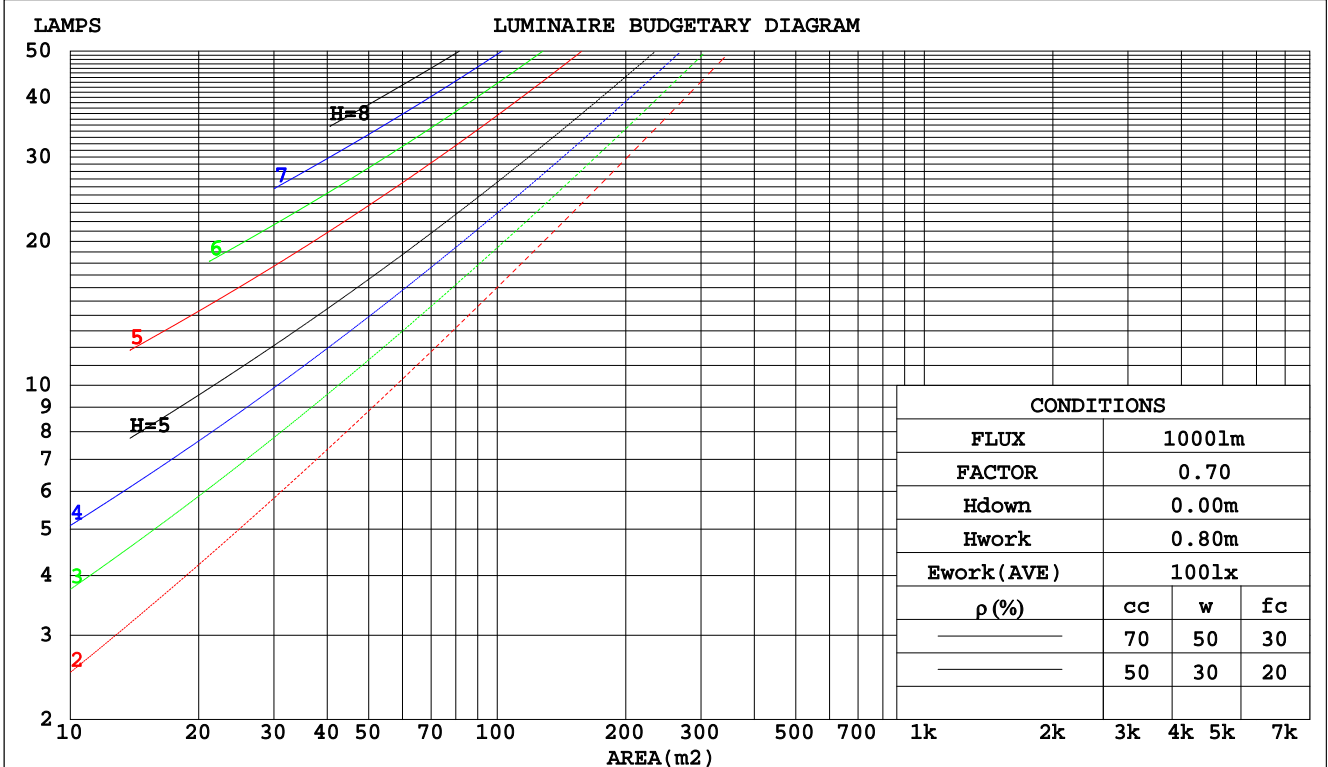
C Range: 0 - 360DEG
 C Interval: 22.5DEG
 Test Speed: HIGH
 Temperature: 24.5DEG
 Operators: William
 Test Date: 2018-09-19

γ Range: 0 - 180DEG
 γ Interval: 1.0DEG
 Test System: EVERFINE GO-R5000_V2 SYSTEM V2.0.366
 Humidity: 65.7%
 Test Distance: 26.000m [K=1.3825]
 Remarks:

CU AND LUMINAIRE BUDGETARY ESTIMATE DIAGRAM

Test:U:0V I:0A P:0W PF:0.0000 Freq:0Hz Lamp Flux:192.066x1 lm		
NAME: Emergency Exit Luminaire	TYPE:LED	WEIGHT:N/A
SPEC.:N/A	DIM.:	SERIAL No.:N/A
MFR.: CETRAM LIMITED	SUR.:	Shielding Angle:N/A

pcc	80%			70%			50%			30%			10%			0
	50%	30%	10%	50%	30%	10%	50%	30%	10%	50%	30%	10%	50%	30%	10%	0
pw																
pfc	20%			20%			20%			20%			20%			0
RCR	RCR:Room Cavity Ratio						Coefficients of Utilization(CU)									
0.0	1.14	1.14	1.14	1.09	1.09	1.09	1.00	1.00	1.00	.92	.92	.92	.84	.84	.84	.80
1.0	.92	.86	.81	.88	.82	.77	.80	.75	.71	.72	.69	.65	.66	.63	.60	.56
2.0	.77	.69	.61	.74	.66	.59	.67	.60	.55	.60	.55	.50	.54	.50	.46	.43
3.0	.66	.57	.49	.63	.54	.47	.57	.50	.44	.52	.45	.40	.46	.41	.37	.34
4.0	.58	.47	.40	.55	.46	.38	.50	.42	.36	.45	.38	.33	.40	.35	.30	.27
5.0	.51	.41	.33	.48	.39	.32	.44	.36	.30	.40	.33	.28	.36	.30	.26	.23
6.0	.45	.35	.28	.43	.34	.27	.39	.31	.25	.35	.29	.24	.32	.26	.22	.19
7.0	.40	.31	.24	.39	.30	.23	.35	.28	.22	.32	.25	.20	.29	.23	.19	.16
8.0	.37	.27	.21	.35	.26	.21	.32	.25	.19	.29	.23	.18	.26	.21	.17	.14
9.0	.33	.25	.19	.32	.24	.18	.29	.22	.17	.27	.20	.16	.24	.19	.15	.13
10.0	.31	.22	.17	.29	.21	.16	.27	.20	.15	.25	.18	.14	.22	.17	.13	.11



C Range: 0 - 360DEG
 C Interval: 22.5DEG
 Test Speed: HIGH
 Temperature:24.5DEG
 Operators:William
 Test Date:2018-09-19

γ Range: 0 - 180DEG
 γ Interval: 1.0DEG
 Test System:EVERFINE GO-R5000_V2 SYSTEM V2.0.366
 Humidity:65.7%
 Test Distance:26.000m [K=1.3825]
 Remarks:

WEC AND CCEC

Test:U:0V I:0A P:0W PF:0.0000 Freq:0Hz Lamp Flux:192.066x1 lm		
NAME: Emergency Exit Luminaire	TYPE:LED	WEIGHT:N/A
SPEC.:N/A	DIM.:	SERIAL No.:N/A
MFR.: CETRAM LIMITED	SUR.:	Shielding Angle:N/A

ρcc	80%			70%			50%			30%			10%			0
ρw	50%	30%	10%	50%	30%	10%	50%	30%	10%	50%	30%	10%	50%	30%	10%	0
ρfc	20%			20%			20%			20%			20%			0
RCR	RCR:Room Cavity Ratio						Wall Exitance Coefficients(WEC)									
0.0																
1.0	.441	.251	.079	.427	.244	.077	.402	.231	.074	.379	.219	.070	.358	.207	.067	
2.0	.370	.203	.062	.358	.197	.061	.335	.186	.058	.313	.176	.055	.294	.166	.052	
3.0	.322	.172	.051	.311	.167	.050	.291	.157	.048	.271	.149	.046	.254	.140	.043	
4.0	.286	.149	.044	.276	.145	.043	.258	.137	.041	.240	.129	.039	.224	.122	.037	
5.0	.258	.131	.038	.249	.128	.037	.232	.121	.035	.216	.114	.034	.201	.107	.032	
6.0	.234	.117	.034	.226	.114	.033	.211	.108	.031	.196	.102	.030	.182	.096	.028	
7.0	.215	.106	.030	.207	.103	.029	.193	.098	.028	.180	.092	.027	.167	.087	.026	
8.0	.198	.097	.027	.191	.094	.027	.178	.089	.025	.166	.084	.024	.154	.079	.023	
9.0	.184	.089	.025	.178	.087	.024	.166	.082	.023	.154	.077	.022	.143	.073	.021	
10.0	.172	.082	.023	.166	.080	.022	.155	.076	.021	.144	.071	.020	.134	.067	.019	

ρcc	80%			70%			50%			30%			10%			0
ρw	50%	30%	10%	50%	30%	10%	50%	30%	10%	50%	30%	10%	50%	30%	10%	0
ρfc	20%			20%			20%			20%			20%			0
RCR	RCR:Room Cavity Ratio						Ceiling Cavity Exitance Coefficients(CCEC)									
0.0	.343	.343	.343	.293	.293	.293	.200	.200	.200	.115	.115	.115	.037	.037	.037	
1.0	.343	.308	.277	.293	.265	.239	.201	.182	.165	.116	.105	.096	.037	.034	.031	
2.0	.337	.286	.243	.289	.246	.210	.198	.170	.147	.114	.099	.086	.037	.032	.028	
3.0	.330	.270	.222	.283	.233	.193	.194	.162	.135	.112	.095	.080	.036	.031	.026	
4.0	.322	.258	.209	.276	.223	.181	.190	.155	.128	.110	.091	.076	.035	.030	.025	
5.0	.314	.248	.200	.270	.215	.174	.186	.150	.123	.108	.088	.073	.035	.029	.024	
6.0	.306	.240	.193	.263	.208	.168	.182	.146	.119	.105	.086	.071	.034	.028	.023	
7.0	.299	.234	.188	.257	.203	.164	.178	.142	.116	.103	.084	.069	.033	.027	.023	
8.0	.292	.228	.185	.251	.198	.161	.174	.139	.114	.101	.082	.068	.033	.027	.023	
9.0	.285	.224	.182	.246	.194	.159	.170	.136	.113	.099	.081	.067	.032	.026	.022	
10.0	.279	.220	.180	.241	.191	.157	.167	.134	.111	.097	.079	.067	.032	.026	.022	

C Range: 0 - 360DEG
 C Interval: 22.5DEG
 Test Speed: HIGH
 Temperature:24.5DEG
 Operators:William
 Test Date:2018-09-19

γ Range: 0 - 180DEG
 γ Interval: 1.0DEG
 Test System:EVERFINE GO-R5000_V2 SYSTEM V2.0.366
 Humidity:65.7%
 Test Distance:26.000m [K=1.3825]
 Remarks:

UGR(Unified Glare Rating) Table

Test:U:0V I:0A P:0W PF:0.0000 Freq:0Hz Lamp Flux:192.066x1 lm										
NAME: Emergency Exit Luminaire					TYPE:LED			WEIGHT:N/A		
SPEC.:N/A					DIM.:			SERIAL No.:N/A		
MFR.: CETRAM LIMITED					SUR.:			Shielding Angle:N/A		
ceiling/cavity	0.7	0.7	0.5	0.5	0.3	0.7	0.7	0.5	0.5	0.3
walls	0.5	0.3	0.5	0.3	0.3	0.5	0.3	0.5	0.3	0.3
working plane	0.2	0.2	0.2	0.2	0.2	0.2	0.2	0.2	0.2	0.2
Room dimensions	Viewed crosswise					Viewed endwise				
x = 2H y = 2H	15.0	16.5	15.6	17.0	17.6	15.3	16.7	15.8	17.3	17.9
3H	17.6	18.9	18.1	19.5	20.2	18.0	19.4	18.6	19.9	20.6
4H	18.9	20.2	19.5	20.8	21.5	19.5	20.8	20.1	21.4	22.0
6H	20.3	21.5	20.9	22.2	22.9	21.0	22.2	21.6	22.9	23.6
8H	21.1	22.3	21.7	22.9	23.6	21.9	23.1	22.5	23.7	24.4
12H	22.0	23.1	22.6	23.7	24.5	22.9	24.0	23.5	24.6	25.4
4H 2H	16.1	17.3	16.7	17.9	18.6	16.3	17.5	16.9	18.1	18.8
3H	18.8	19.9	19.4	20.6	21.3	19.2	20.3	19.8	21.0	21.7
4H	20.3	21.3	20.9	22.0	22.7	20.8	21.9	21.5	22.5	23.3
6H	21.9	22.8	22.5	23.5	24.3	22.6	23.5	23.3	24.2	25.0
8H	22.7	23.6	23.4	24.3	25.1	23.5	24.4	24.2	25.1	25.9
12H	23.7	24.5	24.4	25.2	26.0	24.6	25.4	25.3	26.1	26.9
8H 4H	21.1	22.0	21.8	22.7	23.5	21.5	22.4	22.2	23.1	23.9
6H	23.0	23.7	23.7	24.4	25.3	23.6	24.3	24.3	25.0	25.9
8H	24.0	24.7	24.8	25.4	26.3	24.7	25.4	25.5	26.1	27.0
12H	25.2	25.8	25.9	26.5	27.4	26.0	26.6	26.8	27.4	28.3
12H 4H	21.3	22.1	22.0	22.8	23.6	21.6	22.5	22.3	23.2	24.0
6H	23.3	24.0	24.1	24.7	25.6	23.9	24.5	24.6	25.3	26.1
8H	24.5	25.1	25.3	25.9	26.8	25.1	25.7	25.9	26.5	27.4
Variations with the observer position at spacings:										
S = 1.0H	+ 0.1 / - 0.1					+ 0.1 / - 0.1				
1.5H	+ 0.2 / - 0.2					+ 0.2 / - 0.3				
2.0H	+ 0.3 / - 0.4					+ 0.3 / - 0.4				

CIE Pub.117, 192.1 lm Total Lamp Luminous Flux Corrected (8log(F/F0) = -5.7)

C Range: 0 - 360DEG
 C Interval: 22.5DEG
 Test Speed: HIGH
 Temperature:24.5DEG
 Operators:William
 Test Date:2018-09-19

γ Range: 0 - 180DEG
 γ Interval: 1.0DEG
 Test System:EVERFINE GO-R5000_V2 SYSTEM V2.0.366
 Humidity:65.7%
 Test Distance:26.000m [K=1.3825]
 Remarks:

UTILIZATION FACTORS TABLE

Test:U:0V I:0A P:0W PF:0.0000 Freq:0Hz Lamp Flux:192.066x1 lm		
NAME: Emergency Exit Luminaire	TYPE:LED	WEIGHT:N/A
SPEC.:N/A	DIM.:	SERIAL No.:N/A
MFR.: CETRAM LIMITED	SUR.:	Shielding Angle:N/A

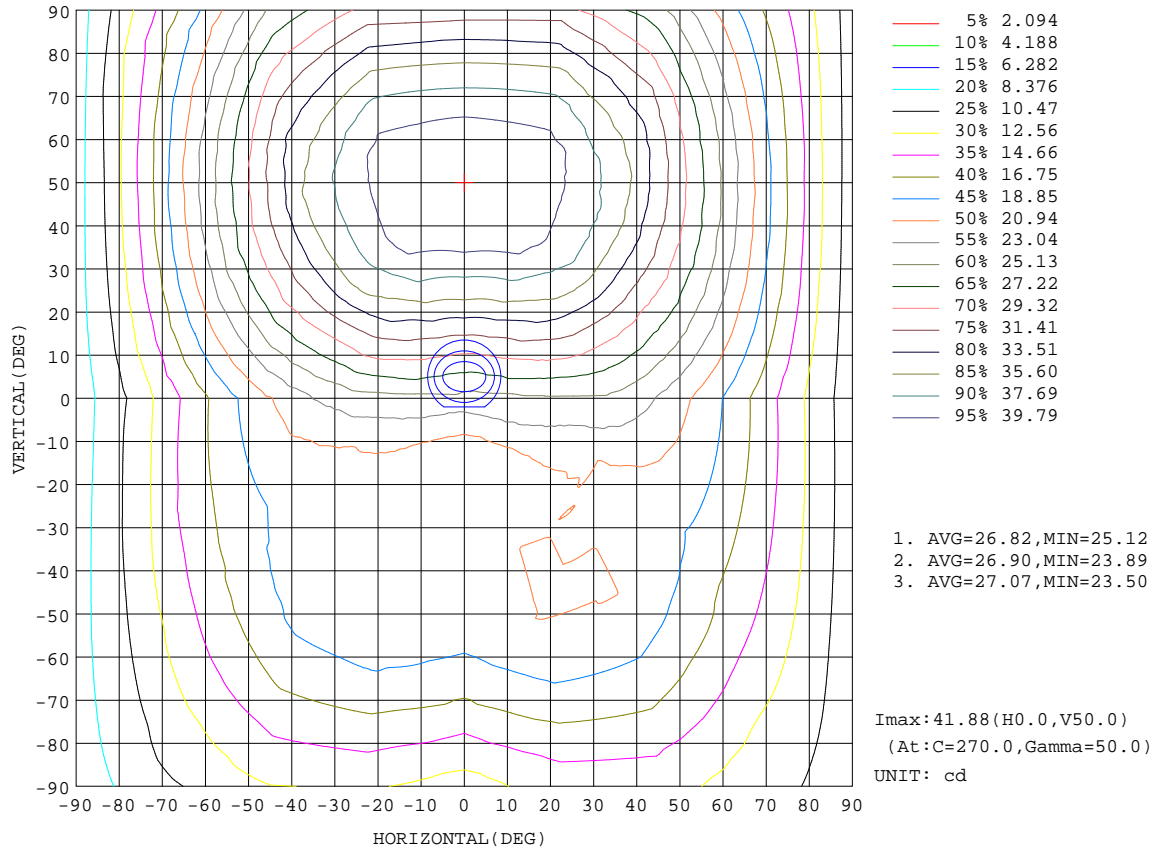
REFLECTANCE										
Ceiling	0.8	0.8	0.8	0.7	0.7	0.7	0.5	0.5	0.5	0
Walls	0.7	0.5	0.3	0.7	0.5	0.3	0.7	0.5	0.3	0
Working plane	0.2	0.2	0.2	0.2	0.2	0.2	0.2	0.2	0.2	0
ROOM INDEX	UTILIZATION FACTORS(PERCENT) k(RI) x RCR = 5									
k = 0.60	43	30	22	42	29	22	40	29	22	15
0.80	52	38	29	50	37	29	47	36	28	20
1.00	59	45	36	57	44	36	54	45	34	25
1.25	66	53	43	64	51	42	60	49	41	30
1.50	72	58	49	69	56	48	64	53	45	34
2.00	79	67	58	76	65	56	70	61	53	41
2.50	84	73	64	81	70	62	74	65	59	45
3.00	88	78	69	85	75	67	78	70	63	49
4.00	94	84	77	89	81	74	82	75	69	54
5.00	97	89	82	93	85	79	85	79	74	58
ROOM INDEX	UF(total)									Direct
According to DIN EN 13032-2 2004			Suspended				SHRNOM = 1.25			

C Range: 0 - 360DEG
 C Interval: 22.5DEG
 Test Speed: HIGH
 Temperature:24.5DEG
 Operators:William
 Test Date:2018-09-19

γ Range: 0 - 180DEG
 γ Interval: 1.0DEG
 Test System:EVERFINE GO-R5000_V2 SYSTEM V2.0.366
 Humidity:65.7%
 Test Distance:26.000m [K=1.3825]
 Remarks:

ISOCANDELA DIAGRAM

Test:U:0V I:0A P:0W PF:0.0000 Freq:0Hz Lamp Flux:192.066x1 lm		
NAME: Emergency Exit Luminaire	TYPE:LED	WEIGHT:N/A
SPEC.:N/A	DIM.:	SERIAL No.:N/A
MFR.: CETRAM LIMITED	SUR.:	Shielding Angle:N/A

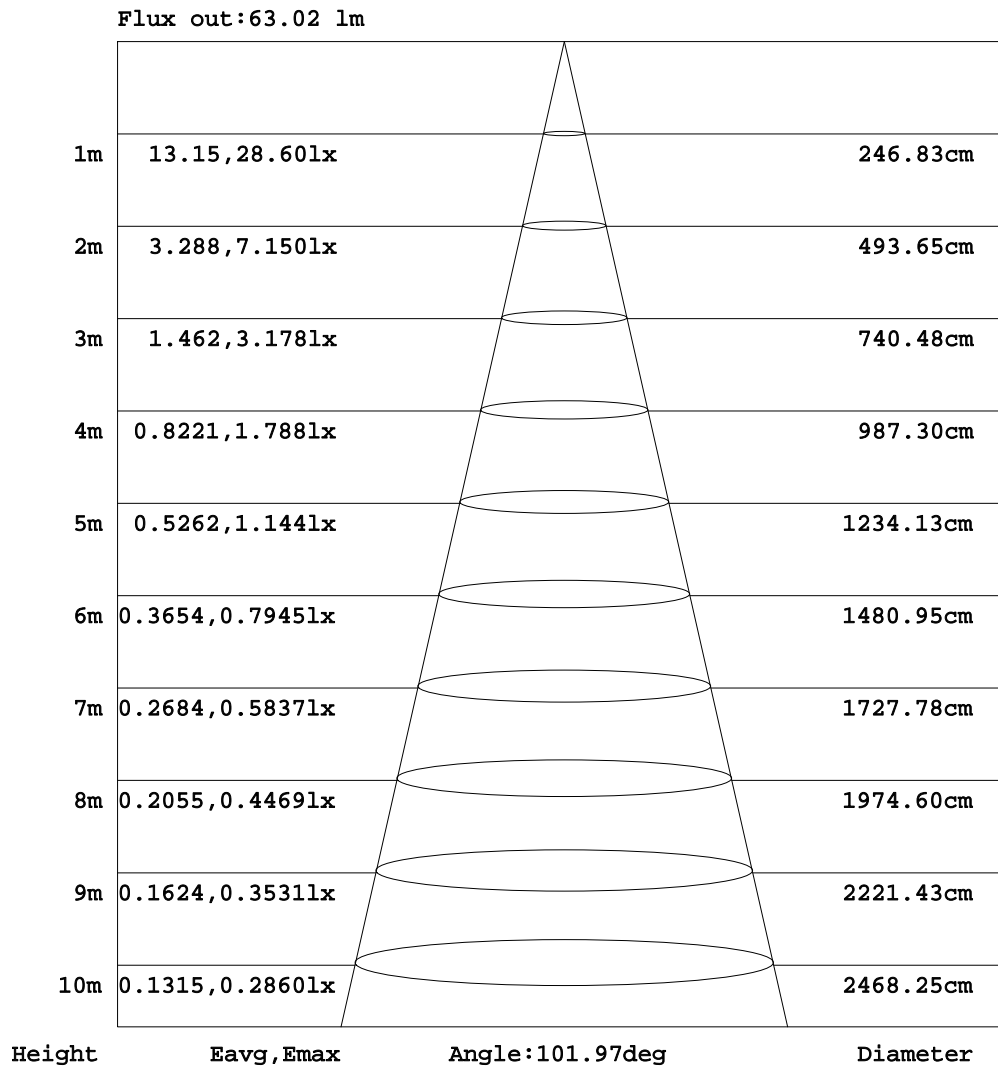


C Range: 0 - 360DEG
 C Interval: 22.5DEG
 Test Speed: HIGH
 Temperature: 24.5DEG
 Operators: William
 Test Date: 2018-09-19

γ Range: 0 - 180DEG
 γ Interval: 1.0DEG
 Test System: EVERFINE GO-R5000_V2 SYSTEM V2.0.366
 Humidity: 65.7%
 Test Distance: 26.000m [K=1.3825]
 Remarks:

AAI Figure

Test:U:0V I:0A P:0W PF:0.0000 Freq:0Hz Lamp Flux:192.066x1 lm		
NAME: Emergency Exit Luminaire	TYPE:LED	WEIGHT:N/A
SPEC.:N/A	DIM.:	SERIAL No.:N/A
MFR.: CETRAM LIMITED	SUR.:	Shielding Angle:N/A



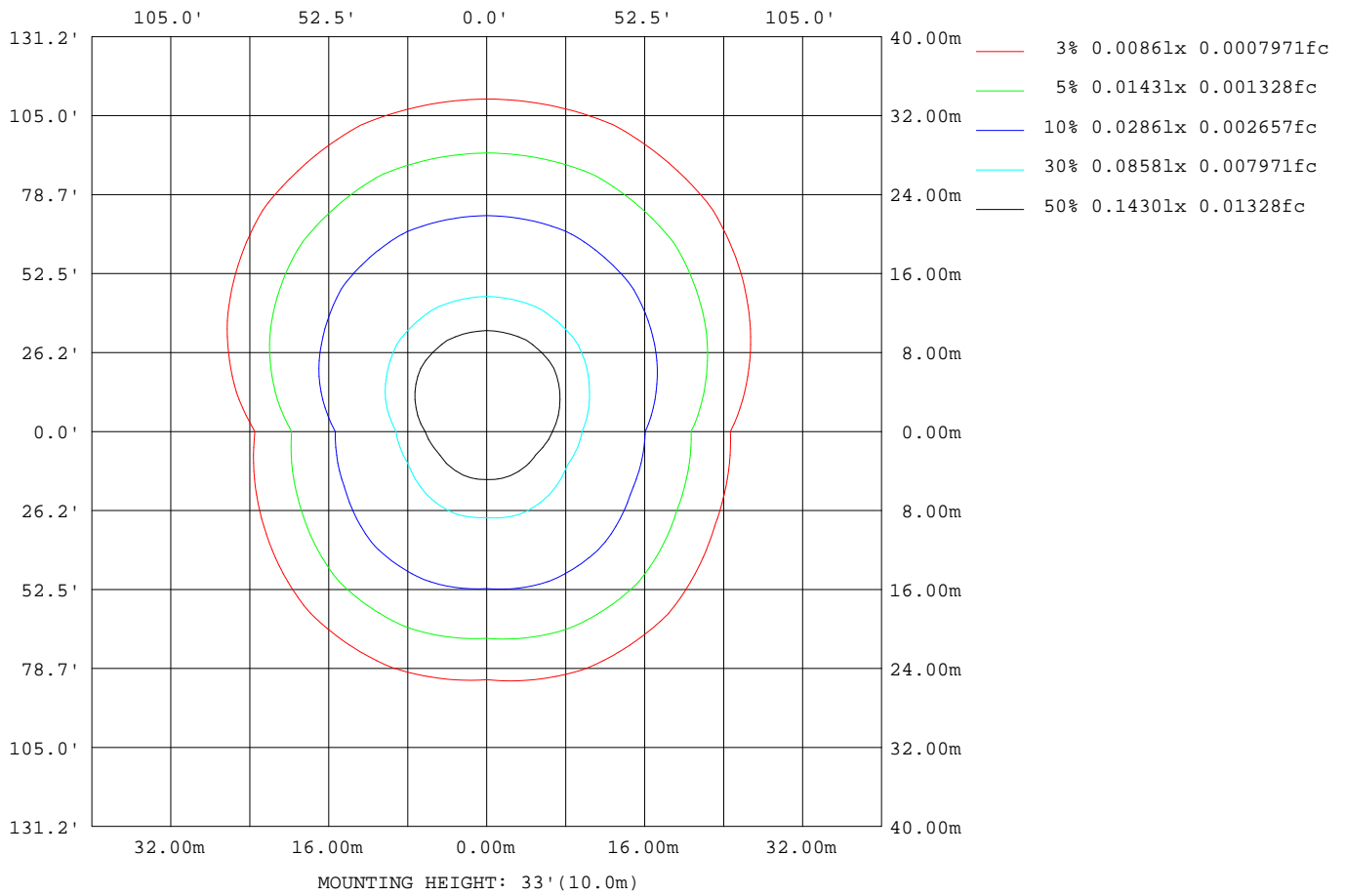
Note:The Curves indicate the illuminated area and the average illumination when the luminaire is at different distance.

C Range: 0 - 360DEG
 C Interval: 22.5DEG
 Test Speed: HIGH
 Temperature:24.5DEG
 Operators:William
 Test Date:2018-09-19

γ Range: 0 - 180DEG
 γ Interval: 1.0DEG
 Test System:EVERFINE GO-R5000_V2 SYSTEM V2.0.366
 Humidity:65.7%
 Test Distance:26.000m [K=1.3825]
 Remarks:

ISOLUX DIAGRAM

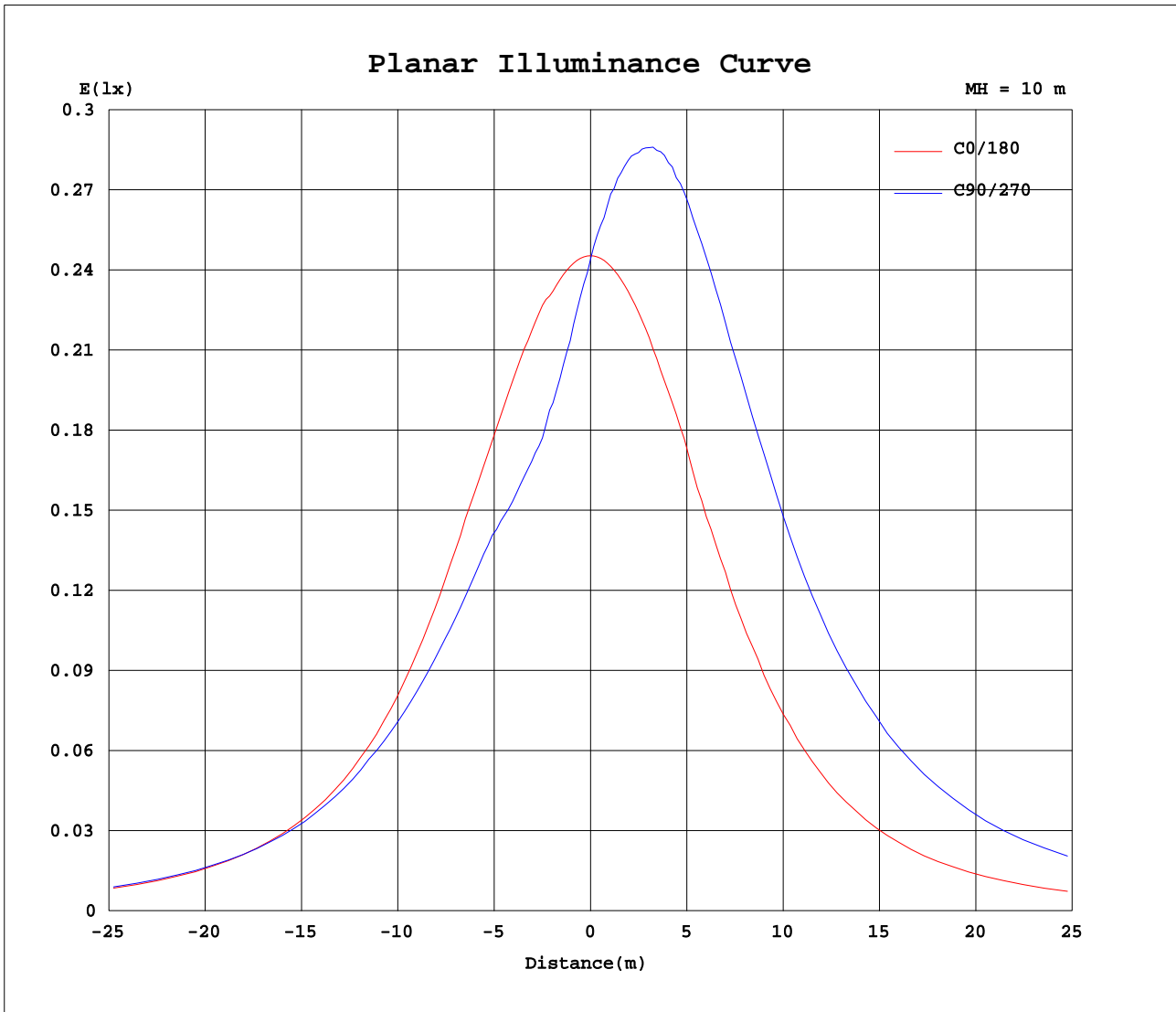
Test:U:0V I:0A P:0W PF:0.0000 Freq:0Hz Lamp Flux:192.066x1 lm		
NAME: Emergency Exit Luminaire	TYPE:LED	WEIGHT:N/A
SPEC.:N/A	DIM.:	SERIAL No.:N/A
MFR.: CETRAM LIMITED	SUR.:	Shielding Angle:N/A



C Range: 0 - 360DEG
 C Interval: 22.5DEG
 Test Speed: HIGH
 Temperature:24.5DEG
 Operators:William
 Test Date:2018-09-19

γ Range: 0 - 180DEG
 γ Interval: 1.0DEG
 Test System:EVERFINE GO-R5000_V2 SYSTEM V2.0.366
 Humidity:65.7%
 Test Distance:26.000m [K=1.3825]
 Remarks:

Planar Illuminance Curve



C Range: 0 - 360DEG
C Interval: 22.5DEG
Test Speed: HIGH
Temperature: 24.5DEG
Operators: William
Test Date: 2018-09-19

γ Range: 0 - 180DEG
 γ Interval: 1.0DEG
Test System: EVERFINE GO-R5000_V2 SYSTEM V2.0.366
Humidity: 65.7%
Test Distance: 26.000m [K=1.3825]
Remarks:

LUMINOUS DISTRIBUTION INTENSITY DATA

Test:U:0V I:0A P:0W PF:0.0000 Freq:0Hz Lamp Flux:192.066x1 lm		
NAME: Emergency Exit Luminaire	TYPE:LED	WEIGHT:N/A
SPEC.:N/A	DIM.:	SERIAL No.:N/A
MFR.: CETRAM LIMITED	SUR.:	Shielding Angle:N/A

Table--1

UNIT: cd

C(DEG) γ (DEG)	0	22.5	45	67.5	90	112.5	135	157.5	180	202.5	225	247.5	270	292.5	315	337.5			
0	24.5	24.5	24.5	24.5	24.5	24.5	24.5	24.5	24.5	24.5	24.5	24.5	24.5	24.5	24.5	24.5			
5	24.5	23.8	23.1	22.5	22.3	22.5	22.9	23.8	24.5	25.7	26.3	26.7	26.9	26.6	26.1	25.4			
10	24.5	23.4	21.9	20.8	20.5	21.0	21.6	23.3	24.5	26.7	28.2	29.1	29.4	29.0	28.1	26.7			
15	24.8	23.0	21.1	20.0	19.4	19.8	20.8	22.7	24.5	27.9	30.1	31.4	31.8	31.5	30.0	28.0			
20	24.9	22.5	20.5	19.7	19.3	19.5	20.3	21.9	24.4	28.7	31.9	33.9	34.5	34.0	31.9	28.9			
25	24.9	21.7	20.5	19.8	19.7	19.9	20.2	21.2	24.3	29.3	33.6	36.1	36.8	36.3	33.7	29.8			
30	24.9	21.3	20.6	20.3	20.1	20.2	20.2	20.6	23.7	29.2	35.0	38.1	38.7	38.3	35.3	30.1			
35	24.6	20.7	20.9	20.8	20.1	20.4	20.2	20.1	23.1	29.2	36.0	39.6	40.3	39.9	36.5	30.1			
40	23.9	20.4	20.8	21.0	20.1	20.7	20.2	19.7	22.1	29.2	36.4	40.8	41.5	41.1	37.1	30.0			
45	22.8	20.1	20.9	21.0	20.1	20.7	20.2	19.3	20.8	28.9	36.4	40.9	42.0	41.3	37.1	29.6			
50	21.7	19.6	20.9	21.0	20.0	20.7	20.2	18.9	19.6	28.1	36.3	40.9	42.1	41.3	37.1	29.2			
55	20.3	18.9	20.9	20.8	19.5	20.6	20.2	18.3	18.1	27.5	36.0	40.8	41.8	41.3	36.5	28.4			
60	18.8	18.3	20.1	20.1	18.8	19.9	19.3	17.4	16.5	26.6	35.2	40.5	41.1	41.1	35.9	27.4			
65	17.2	17.5	19.4	19.3	17.9	19.0	18.6	16.6	15.0	25.0	34.4	39.5	40.1	39.7	34.9	26.1			
70	15.5	16.4	18.3	18.4	16.7	17.9	17.5	15.3	13.1	23.5	32.8	38.1	38.5	38.7	33.6	24.8			
75	13.9	15.1	17.2	17.2	15.6	16.7	16.4	14.2	11.5	22.1	31.2	36.2	36.9	36.7	32.0	23.2			
80	12.1	13.9	15.9	15.8	14.3	15.4	15.0	12.9	9.94	20.0	29.3	34.3	35.0	34.9	29.9	21.3			
85	10.7	12.4	14.6	14.6	13.0	14.1	13.8	11.6	8.57	18.1	27.3	32.2	32.6	32.6	28.0	19.4			
90	9.44	11.3	13.5	13.4	11.9	12.9	12.5	10.2	7.19	16.2	25.4	30.0	30.5	30.3	25.8	17.3			
95	7.91	9.25	9.99	8.29	7.15	7.75	8.69	7.92	6.09	12.0	17.6	18.1	18.3	18.1	18.3	13.3			
100	6.32	6.93	7.89	7.48	7.15	7.38	7.46	6.10	4.79	8.52	14.4	16.5	18.3	16.8	14.9	9.42			
105	5.08	5.27	6.52	7.26	6.86	7.52	6.30	4.94	3.77	6.20	12.8	17.9	20.4	18.3	13.2	6.96			
110	4.79	4.55	5.43	7.33	7.44	7.52	5.65	4.21	3.56	4.62	11.3	16.5	18.9	16.9	11.4	5.15			
115	4.65	4.12	4.64	6.54	6.50	6.57	4.71	3.63	3.56	3.68	9.34	14.3	15.8	14.9	9.48	3.92			
120	4.43	3.54	3.77	5.52	5.12	5.33	3.69	3.05	3.49	2.45	7.38	11.7	12.9	12.0	7.45	2.98			
125	4.28	3.32	3.11	4.22	3.80	3.81	2.97	2.76	3.19	2.38	5.28	8.13	9.42	8.32	5.57	2.69			
130	4.14	3.10	2.61	3.05	1.68	2.63	2.39	2.69	2.76	2.38	3.39	6.01	4.68	6.28	3.54	2.69			
135	4.00	3.10	2.24	1.89	1.61	1.68	1.89	2.69	2.69	2.31	1.66	3.48	3.86	3.72	2.17	2.69			
140	3.92	3.10	1.81	1.02	0.73	0.95	1.45	2.69	2.69	2.31	1.01	1.23	1.68	1.46	1.23	2.54			
145	3.63	3.17	1.74	0.58	0.00	0.29	1.23	2.69	2.40	2.38	0.87	0.00	0.00	0.00	0.80	2.40			
150	2.98	2.67	1.66	0.36	0.00	0.15	1.09	2.11	1.81	1.59	0.79	0.00	0.00	0.00	0.43	1.67			
155	2.26	2.10	1.23	0.29	0.00	0.00	0.87	1.67	1.23	1.30	0.36	0.00	0.00	0.00	0.07	1.09			
160	1.53	1.37	0.87	0.15	0.00	0.00	0.58	0.94	0.51	0.50	0.07	0.00	0.00	0.00	0.00	0.36			
165	0.87	0.65	0.51	0.07	0.00	0.00	0.15	0.44	0.00	0.00	0.00	0.00	0.00	0.00	0.00	0.00			
170	0.36	0.22	0.07	0.00	0.00	0.00	0.00	0.15	0.00	0.00	0.00	0.00	0.00	0.00	0.00	0.00			
175	0.00	0.00	0.00	0.00	0.00	0.00	0.00	0.00	0.00	0.00	0.00	0.00	0.00	0.00	0.00	0.00			
180	0.00	0.00	0.00	0.00	0.00	0.00	0.00	0.00	0.00	0.00	0.00	0.00	0.00	0.00	0.00	0.00			

C Range: 0 - 360DEG
 C Interval: 22.5DEG
 Test Speed: HIGH
 Temperature:24.5DEG
 Operators:William
 Test Date:2018-09-19

γ Range: 0 - 180DEG
 γ Interval: 1.0DEG
 Test System:EVERFINE GO-R5000_V2 SYSTEM V2.0.366
 Humidity:65.7%
 Test Distance:26.000m [K=1.3825]
 Remarks: