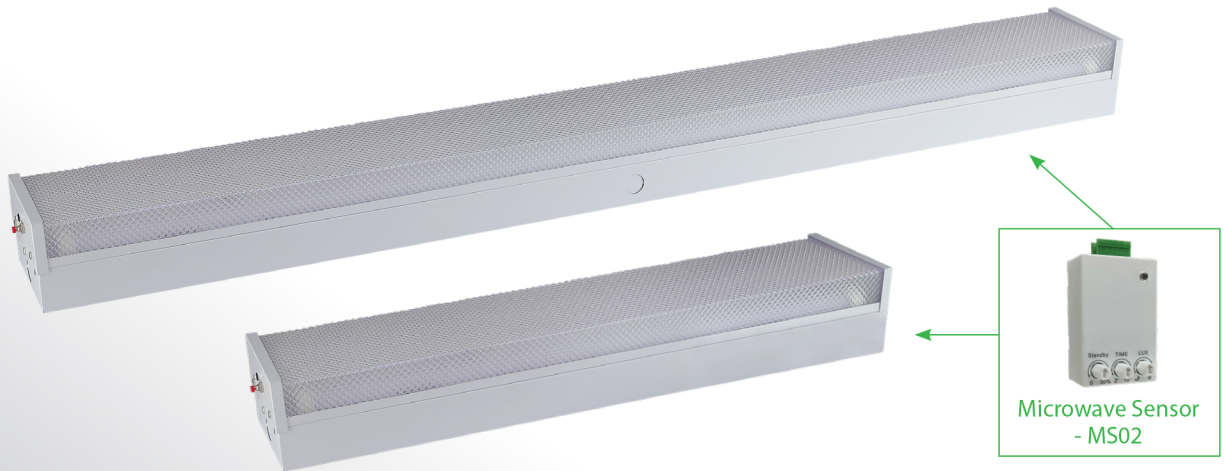


Battens

Premium Widebody Tri-Colour Prismatic Emergency Batten with Sensor Socket



FEATURES

- 20w/40w power selectable (4 foot only)
- Fitted with a large terminal block allowing for fast installation and maintenance
- Wide body to cover junction boxes and provides ample space for heat generating components
- Tri-colour 3000k/4000k/5700k – switchable
- Optional microwave sensor (MS02)
- 1800mAh lithium battery technology
- Designed and manufactured to AS/NZS2293

SPECIFICATIONS

	2ft	4ft
Order Code	B2112PE	B2110PE
Model Number	LWBR2112PE	LWBR2110-PE
Input Voltage	240v	
Lumen Output	1000/2000lm	2000/4000lm
IP Rating	IP20	
Colour Temp	Tri-colour (3000k, 4000k, 5700k)	
Wattage	20W 3.5W (Emergency)	20W/40W Switchable 3.5W (Emergency)
CRI	>80	
Operating Mode	Sustained	
Operating System	Manual Test Switch	
Charging Method	Intelligent current limited constant voltage charge	
Battery	Lithium 1800mAh	
Operating Temp.	1°C to 40°C	
AS 2293 Classification	C0=D63 C90=D32	
Construction	Powder coated steel	
Weight	2.1kg	4kg

DIMENSIONS

