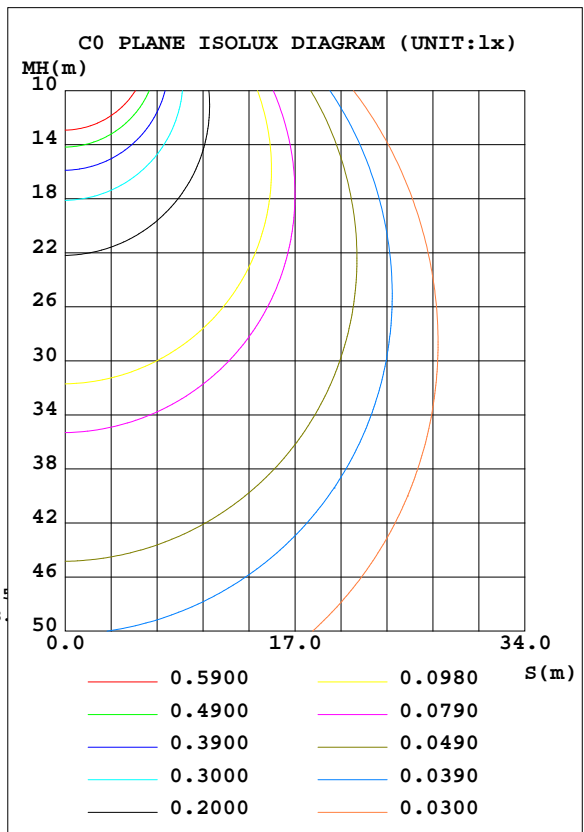
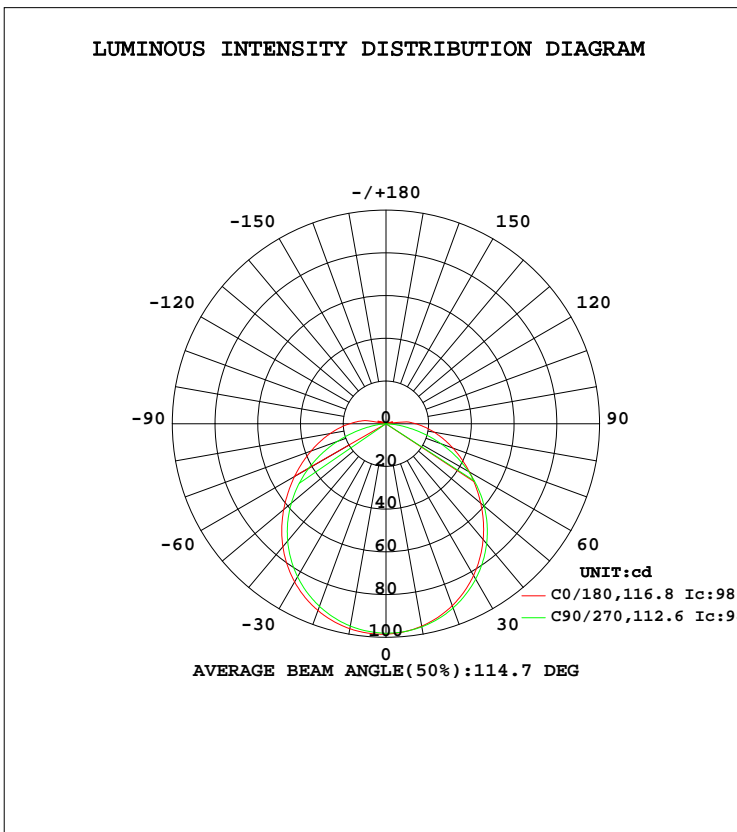


LUMINAIRE PHOTOMETRIC TEST REPORT

Test:U:7.100V I:0.5123A P:3.637W PF:1.000 Freq:0Hz Lamp Flux:308.28lx1 lm		
NAME: 1	TYPE:	WEIGHT:
SPEC.:	DIM.:	SERIAL No.:
MFR.:	SUR.:	Shielding Angle:

DATA OF LAMP		PHOTOMETRIC DATA Eff: 84.75 lm/W			
MODEL	GWB1803-E	Imax(cd)	98.63	S/MH(C0/180)	1.29
NOMINAL POWER(W)	3.6	LOR(%)	100.0	S/MH(C90/270)	1.25
RATED VOLTAGE(V)	7.1	TOTAL FLUX(lm)	308.28	η UP, DN(C0-180)	1.2, 49.4
NOMINAL FLUX(lm)	308.281	CIE CLASS	DIRECT	η UP, DN(C180-360)	1.1, 48.3
LAMPS INSIDE	1	η up(%)	2.4	CIBSE SHR NOM	1.25
TEST VOLTAGE(V)	7.1	η down(%)	97.6	CIBSE SHR MAX	1.35



C Range: 0 - 360DEG
 C Interval: 5.0DEG
 Test Speed: HIGH
 Temperature:25.1DEG
 Operators:Wilson
 Test Date:2019-05-31

γ Range: 0 - 180DEG
 γ Interval: 0.5DEG
 Test System:EVERFINE GO-R5000_V2 SYSTEM V2.0.354
 Humidity:60.5%
 Test Distance:2.718m [K=1.0000]
 Remarks: File No.: WT-F-504-3206-01-A

Checker: Near Gao

Assessor: Akin Xu

ZONAL FLUX DIAGRAM

ZONAL FLUX DIAGRAM:

γ	C0	C45	C90	C135	C180	C225	C270	C315	γ	Φ zone	Φ total	%lum, lamp
5	97.77	98.08	97.73	98.15	98.37	98.37	97.51	97.56	0- 5	2.348	2.348	0.76,0.76
10	96.21	96.66	96.56	97.18	97.44	97.26	96.17	96.04	5- 10	6.965	9.313	3.02,3.02
15	93.84	94.43	94.57	95.39	95.65	95.30	93.98	93.67	10- 15	11.35	20.67	6.7,6.7
20	90.65	91.37	91.80	92.77	93.07	92.55	91.00	90.52	15- 20	15.36	36.03	11.7,11.7
25	86.70	87.57	88.26	89.39	89.69	89.01	87.27	86.60	20- 25	18.86	54.89	17.8,17.8
30	82.01	83.01	83.97	85.25	85.54	84.70	82.75	81.92	25- 30	21.74	76.63	24.9,24.9
35	76.65	77.75	78.98	80.39	80.65	79.65	77.54	76.55	30- 35	23.89	100.5	32.6,32.6
40	70.76	71.85	73.31	74.84	75.13	73.92	71.62	70.53	35- 40	25.25	125.8	40.8,40.8
45	64.43	65.36	66.97	68.68	69.01	67.56	65.06	63.94	40- 45	25.77	151.5	49.2,49.2
50	57.89	58.43	60.05	61.94	62.50	60.64	57.87	56.89	45- 50	25.45	177.0	57.4,57.4
55	51.38	51.15	52.58	54.82	55.91	53.33	50.13	49.59	50- 55	24.33	201.3	65.3,65.3
60	45.08	43.83	44.57	47.41	49.44	45.83	41.85	42.26	55- 60	22.51	223.8	72.6,72.6
65	39.04	36.68	36.16	40.14	43.23	38.50	33.16	35.20	60- 65	20.12	243.9	79.1,79.1
70	33.33	29.99	27.45	33.25	37.33	31.62	24.26	28.60	65- 70	17.31	261.2	84.7,84.7
75	27.94	23.80	18.61	26.89	31.77	25.29	15.44	22.56	70- 75	14.27	275.5	89.4,89.4
80	22.90	18.24	10.33	21.12	26.54	19.62	7.487	17.14	75- 80	11.20	286.7	93,93
85	18.24	13.35	3.598	15.92	21.66	14.55	1.773	12.40	80- 85	8.335	295.0	95.7,95.7
90	13.96	9.164	0.1304	11.50	17.07	10.30	0.0193	8.357	85- 90	5.900	300.9	97.6,97.6
95	10.26	5.743	0.0129	7.537	12.97	6.620	0.0132	0.7317	90- 95	3.967	304.9	98.9,98.9
100	0.0413	0.0310	0.0305	0.0340	6.503	0.0312	0.0307	1.677	95-100	1.610	306.5	99.4,99.4
105	2.148	1.060	0.0383	1.885	0.0340	1.540	0.0317	0.9667	100-105	0.2715	306.8	99.5,99.5
110	2.037	0.3817	0.0440	0.9029	3.316	0.6710	0.0389	0.3212	105-110	0.5809	307.4	99.7,99.7
115	0.9255	0.0877	0.0409	0.3438	1.876	0.2378	0.0444	0.0771	110-115	0.3529	307.7	99.8,99.8
120	0.2971	0.0704	0.0459	0.1171	0.8827	0.0959	0.0498	0.0740	115-120	0.1586	307.9	99.9,99.9
125	0.0731	0.0633	0.0532	0.0773	0.3252	0.0835	0.0563	0.0634	120-125	0.0653	308.0	99.9,99.9
130	0.0712	0.0690	0.0667	0.0886	0.0981	0.0876	0.0693	0.0702	125-130	0.0358	308.0	99.9,99.9
135	0.0775	0.0836	0.0727	0.1036	0.0960	0.0938	0.0750	0.0809	130-135	0.0318	308.0	99.9,99.9
140	0.0925	0.0891	0.0944	0.1173	0.1269	0.1142	0.0862	0.0908	135-140	0.0344	308.1	99.9,99.9
145	0.1269	0.1211	0.1259	0.1356	0.1550	0.1372	0.1098	0.1025	140-145	0.0388	308.1	99.9,99.9
150	0.1341	0.1003	0.1484	0.1636	0.2151	0.1622	0.1248	0.1035	145-150	0.0413	308.1	100,100
155	0.1231	0.1095	0.1723	0.1958	0.2462	0.2109	0.1086	0.1240	150-155	0.0403	308.2	100,100
160	0.1234	0.1584	0.2026	0.2467	0.2288	0.2467	0.1220	0.1342	155-160	0.0356	308.2	100,100
165	0.1249	0.1693	0.2141	0.2424	0.2507	0.2430	0.1285	0.1387	160-165	0.0312	308.2	100,100
170	0.1286	0.1450	0.2159	0.2304	0.2324	0.2174	0.1383	0.1362	165-170	0.0221	308.3	100,100
175	0.1371	0.1347	0.2007	0.1925	0.2006	0.1923	0.1445	0.1423	170-175	0.0125	308.3	100,100
180	0.1821	0.1821	0.1821	0.1821	0.1830	0.1830	0.1830	0.1830	175-180	0.0041	308.3	100,100
DEG	LUMINOUS INTENSITY:cd									UNIT:lm		

Conical surface Flux(90deg): 151.53 lm

%lum = 49.2%
%lamp = 49.2%

Conical surface Flux(120deg): 223.82 lm

%lum = 72.6%
%lamp = 72.6%

C Range: 0 - 360DEG
C Interval: 5.0DEG
Test Speed: HIGH
Temperature:25.1DEG
Operators:Wilson
Test Date:2019-05-31

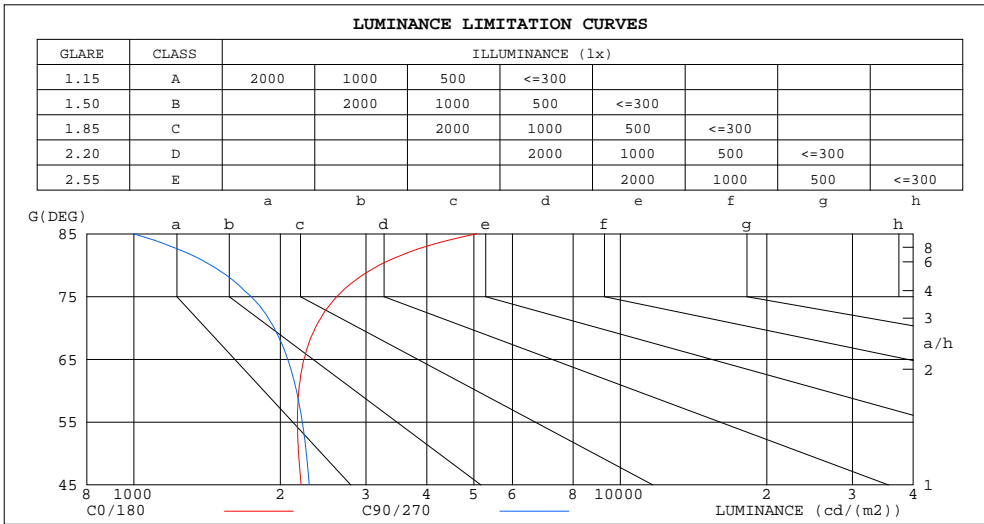
γ Range: 0 - 180DEG
γ Interval: 0.5DEG
Test System:EVERFINE GO-R5000_V2 SYSTEM V2.0.354
Humidity:60.5%
Test Distance:2.718m [K=1.0000]
Remarks: File No.: WT-F-504-3206-01-A

Checker: Near Gao

Assessor: Akin Xu

LUMINANCE LIMITATION CURVES

Test:U:7.100V I:0.5123A P:3.637W PF:1.000 Freq:0Hz Lamp Flux:308.281x1 lm		
NAME: 1	TYPE:	WEIGHT:
SPEC.:	DIM.:	SERIAL No.:
MFR.:	SUR.:	Shielding Angle:



LUMINANCE cd/(m2)		
G(DEG)	C0/180	C90/270
85	5067	1000
80	3193	1440
75	2613	1741
70	2360	1943
65	2237	2072
60	2183	2159
55	2169	2220
50	2181	2262
45	2206	2293

C Range: 0 - 360DEG
 C Interval: 5.0DEG
 Test Speed: HIGH
 Temperature:25.1DEG
 Operators:Wilson
 Test Date:2019-05-31

γ Range: 0 - 180DEG
 γ Interval: 0.5DEG
 Test System:EVERFINE GO-R5000_V2 SYSTEM V2.0.354
 Humidity:60.5%
 Test Distance:2.718m [K=1.0000]
 Remarks: File No.: WT-F-504-3206-01-A

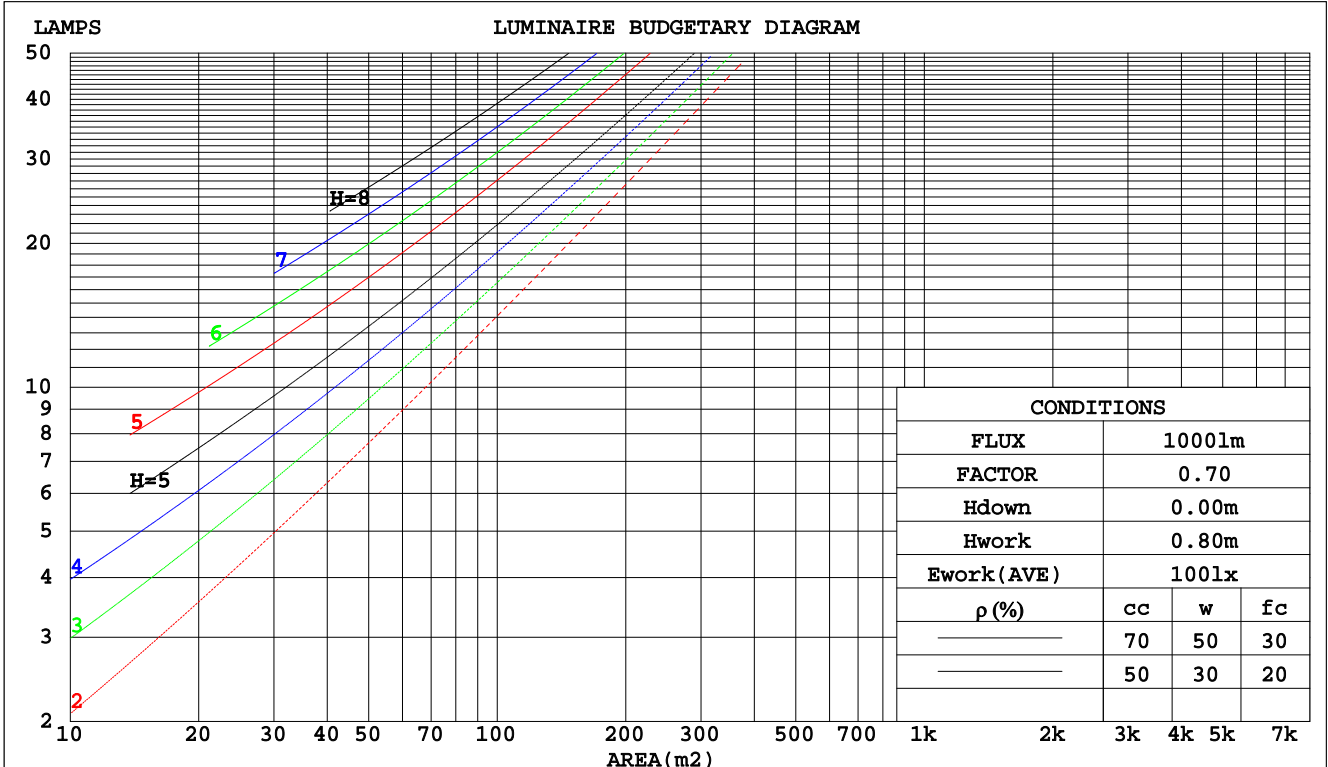
Checker: Near Gao

Assessor: Akin Xu

CU AND LUMINAIRE BUDGETARY ESTIMATE DIAGRAM

Test:U:7.100V I:0.5123A P:3.637W PF:1.000 Freq:0Hz Lamp Flux:308.281x1 lm		
NAME: 1	TYPE:	WEIGHT:
SPEC.:	DIM.:	SERIAL No.:
MFR.:	SUR.:	Shielding Angle:

pcc	80%			70%			50%			30%			10%			0
	50%	30%	10%	50%	30%	10%	50%	30%	10%	50%	30%	10%	50%	30%	10%	0
pw																0
pfc	20%			20%			20%			20%			20%			0
RCR	RCR:Room Cavity Ratio						Coefficients of Utilization(CU)									
0.0	1.18	1.18	1.18	1.15	1.15	1.15	1.10	1.10	1.10	1.05	1.05	1.05	.00	.00	.00	.98
1.0	1.01	.97	.92	.99	.95	.91	.94	.91	.87	.90	.87	.84	.86	.83	.81	.79
2.0	.88	.80	.74	.86	.79	.73	.82	.76	.71	.78	.73	.69	.75	.71	.67	.65
3.0	.77	.68	.61	.75	.67	.61	.72	.65	.59	.69	.63	.58	.66	.61	.57	.54
4.0	.68	.59	.52	.66	.58	.51	.63	.56	.50	.61	.54	.49	.58	.53	.48	.46
5.0	.61	.51	.44	.59	.51	.44	.57	.49	.43	.55	.48	.43	.52	.47	.42	.40
6.0	.54	.45	.39	.53	.45	.38	.51	.44	.38	.49	.42	.37	.47	.41	.37	.35
7.0	.49	.40	.34	.48	.40	.34	.47	.39	.33	.45	.38	.33	.43	.37	.33	.30
8.0	.45	.36	.30	.44	.36	.30	.43	.35	.30	.41	.34	.29	.40	.34	.29	.27
9.0	.41	.33	.27	.41	.33	.27	.39	.32	.27	.38	.31	.27	.37	.31	.26	.24
10.0	.38	.30	.25	.37	.30	.25	.36	.29	.24	.35	.29	.24	.34	.28	.24	.22



C Range: 0 - 360DEG
 C Interval: 5.0DEG
 Test Speed: HIGH
 Temperature:25.1DEG
 Operators:Wilson
 Test Date:2019-05-31

γ Range: 0 - 180DEG
 γ Interval: 0.5DEG
 Test System:EVERFINE GO-R5000_V2 SYSTEM V2.0.354
 Humidity:60.5%
 Test Distance:2.718m [K=1.0000]
 Remarks: File No.: WT-F-504-3206-01-A

Checker: Near Gao

Assessor: Akin Xu

WEC AND CCEC

Test:U:7.100V I:0.5123A P:3.637W PF:1.000 Freq:0Hz Lamp Flux:308.281x1 lm		
NAME: 1	TYPE:	WEIGHT:
SPEC.:	DIM.:	SERIAL No.:
MFR.:	SUR.:	Shielding Angle:

ρ_{cc}	80%			70%			50%			30%			10%			0
ρ_w	50%	30%	10%	50%	30%	10%	50%	30%	10%	50%	30%	10%	50%	30%	10%	0
ρ_{fc}	20%			20%			20%			20%			20%			0
RCR	RCR:Room Cavity Ratio						Wall Exitance Coefficients(WEC)									
0.0																
1.0	.345	.196	.062	.337	.192	.061	.322	.185	.059	.309	.178	.057	.296	.172	.055	
2.0	.311	.171	.052	.304	.168	.052	.291	.162	.050	.279	.157	.049	.268	.152	.048	
3.0	.283	.150	.045	.277	.148	.045	.265	.144	.044	.254	.139	.043	.244	.135	.042	
4.0	.258	.134	.039	.252	.132	.039	.242	.128	.038	.232	.125	.038	.223	.121	.037	
5.0	.237	.121	.035	.232	.119	.035	.223	.116	.034	.214	.113	.034	.206	.110	.033	
6.0	.218	.109	.031	.214	.108	.031	.206	.105	.031	.198	.103	.030	.191	.100	.030	
7.0	.202	.100	.028	.199	.099	.028	.191	.097	.028	.184	.094	.027	.178	.092	.027	
8.0	.189	.092	.026	.185	.091	.026	.178	.089	.025	.172	.087	.025	.166	.085	.025	
9.0	.176	.085	.024	.173	.084	.024	.167	.083	.023	.161	.081	.023	.156	.079	.023	
10.0	.165	.079	.022	.163	.079	.022	.157	.077	.022	.152	.075	.021	.147	.074	.021	

ρ_{cc}	80%			70%			50%			30%			10%			0
ρ_w	50%	30%	10%	50%	30%	10%	50%	30%	10%	50%	30%	10%	50%	30%	10%	0
ρ_{fc}	20%			20%			20%			20%			20%			0
RCR	RCR:Room Cavity Ratio						Ceiling Cavity Exitance Coefficients(CCEC)									
0.0	.209	.209	.209	.178	.178	.178	.122	.122	.122	.070	.070	.070	.022	.022	.022	
1.0	.201	.174	.150	.172	.149	.129	.118	.103	.089	.068	.059	.052	.022	.019	.017	
2.0	.193	.150	.114	.166	.129	.099	.113	.089	.069	.065	.052	.040	.021	.017	.013	
3.0	.185	.133	.091	.159	.115	.079	.109	.080	.055	.063	.047	.033	.020	.015	.011	
4.0	.178	.120	.076	.152	.103	.066	.105	.072	.046	.061	.042	.027	.020	.014	.009	
5.0	.170	.109	.065	.146	.095	.056	.101	.066	.040	.058	.039	.024	.019	.013	.008	
6.0	.163	.101	.057	.140	.088	.050	.096	.061	.035	.056	.036	.021	.018	.012	.007	
7.0	.156	.094	.051	.134	.082	.045	.092	.057	.032	.054	.034	.019	.017	.011	.006	
8.0	.149	.089	.047	.128	.077	.041	.089	.054	.029	.052	.032	.017	.017	.010	.006	
9.0	.143	.084	.044	.123	.073	.038	.085	.051	.027	.050	.030	.016	.016	.010	.005	
10.0	.137	.079	.041	.118	.069	.036	.082	.048	.025	.048	.029	.015	.015	.009	.005	

C Range: 0 - 360DEG
 C Interval: 5.0DEG
 Test Speed: HIGH
 Temperature:25.1DEG
 Operators:Wilson
 Test Date:2019-05-31

γ Range: 0 - 180DEG
 γ Interval: 0.5DEG
 Test System:EVERFINE GO-R5000_V2 SYSTEM V2.0.354
 Humidity:60.5%
 Test Distance:2.718m [K=1.0000]
 Remarks: File No.: WT-F-504-3206-01-A

Checker: Near Gao

Assessor: Akin Xu

UGR(Unified Glare Rating) Table

Test:U:7.100V I:0.5123A P:3.637W PF:1.000 Freq:0Hz Lamp Flux:308.28lx1 lm										
NAME: 1			TYPE:			WEIGHT:				
SPEC.:			DIM.:			SERIAL No.:				
MFR.:			SUR.:			Shielding Angle:				
ceiling/cavity	0.7	0.7	0.5	0.5	0.3	0.7	0.7	0.5	0.5	0.3
walls	0.5	0.3	0.5	0.3	0.3	0.5	0.3	0.5	0.3	0.3
working plane	0.2	0.2	0.2	0.2	0.2	0.2	0.2	0.2	0.2	0.2
Room dimensions	Viewed crosswise					Viewed endwise				
x = 2H y = 2H	19.4	21.0	19.7	21.2	21.5	19.4	20.9	19.7	21.2	21.4
3H	21.4	22.8	21.7	23.1	23.3	20.9	22.3	21.2	22.6	22.9
4H	22.4	23.7	22.7	24.0	24.3	21.5	22.8	21.8	23.1	23.4
6H	23.4	24.7	23.8	25.0	25.3	21.9	23.1	22.2	23.5	23.8
8H	24.0	25.2	24.4	25.5	25.9	22.0	23.2	22.4	23.5	23.9
12H	24.6	25.8	25.0	26.1	26.5	22.0	23.2	22.4	23.5	23.9
4H 2H	20.1	21.4	20.4	21.7	22.0	20.0	21.4	20.4	21.7	22.0
3H	22.2	23.4	22.6	23.7	24.1	21.7	22.9	22.1	23.3	23.6
4H	23.4	24.5	23.8	24.8	25.2	22.4	23.5	22.9	23.9	24.3
6H	24.6	25.6	25.1	26.0	26.4	23.0	24.0	23.4	24.4	24.8
8H	25.3	26.2	25.8	26.6	27.1	23.2	24.1	23.6	24.5	24.9
12H	26.1	26.9	26.5	27.3	27.8	23.3	24.1	23.7	24.5	25.0
8H 4H	23.7	24.6	24.2	25.0	25.5	22.9	23.8	23.4	24.2	24.7
6H	25.2	26.0	25.7	26.4	26.9	23.7	24.4	24.1	24.9	25.4
8H	26.1	26.8	26.6	27.2	27.7	24.0	24.6	24.5	25.1	25.6
12H	27.1	27.7	27.6	28.2	28.7	24.2	24.8	24.7	25.3	25.8
12H 4H	23.7	24.6	24.2	25.0	25.5	23.0	23.9	23.5	24.3	24.7
6H	25.3	26.0	25.8	26.5	27.0	23.9	24.6	24.4	25.0	25.6
8H	26.3	26.9	26.8	27.4	27.9	24.3	24.9	24.8	25.4	25.9
Variations with the observer position at spacings:										
S = 1.0H	+ 0.1 / - 0.1					+ 0.1 / - 0.2				
1.5H	+ 0.2 / - 0.3					+ 0.2 / - 0.3				
2.0H	+ 0.2 / - 0.3					+ 0.1 / - 0.3				

CIE Pub.117, 308.3 lm Total Lamp Luminous Flux Correct (8log(F/F0) = -4.1)

C Range: 0 - 360DEG
 C Interval: 5.0DEG
 Test Speed: HIGH
 Temperature:25.1DEG
 Operators:Wilson
 Test Date:2019-05-31

γ Range: 0 - 180DEG
 γ Interval: 0.5DEG
 Test System:EVERFINE GO-R5000_V2 SYSTEM V2.0.354
 Humidity:60.5%
 Test Distance:2.718m [K=1.0000]
 Remarks: File No.: WT-F-504-3206-01-A

Checker: Near Gao

Assessor: Akin Xu

UTILIZATION FACTORS TABLE

Test:U:7.100V I:0.5123A P:3.637W PF:1.000 Freq:0Hz Lamp Flux:308.281x1 lm		
NAME: 1	TYPE:	WEIGHT:
SPEC.:	DIM.:	SERIAL No.:
MFR.:	SUR.:	Shielding Angle:

REFLECTANCE										
Ceiling	0.8	0.8	0.8	0.7	0.7	0.7	0.5	0.5	0.5	0
Walls	0.7	0.5	0.3	0.7	0.5	0.3	0.7	0.5	0.3	0
Working plane	0.2	0.2	0.2	0.2	0.2	0.2	0.2	0.2	0.2	0
ROOM INDEX	UTILIZATION FACTORS(PERCENT) $k(RI) \times RCR = 5$									
k = 0.60	55	43	36	55	43	36	53	43	36	29
0.80	65	53	45	64	53	45	62	52	45	38
1.00	73	62	54	72	61	54	70	62	53	46
1.25	80	69	61	79	68	61	76	67	60	52
1.50	85	75	67	83	74	66	80	72	65	57
2.00	92	83	76	90	81	75	86	79	73	65
2.50	96	88	81	94	86	80	90	83	78	69
3.00	100	92	86	97	90	85	93	87	82	73
4.00	104	97	92	101	95	90	97	92	88	78
5.00	106	101	96	104	99	94	99	95	91	81
ROOM INDEX	UF(total)									Direct
According to DIN EN 13032-2 2004			Suspended				SHRNOM = 1.25			

C Range: 0 - 360DEG
 C Interval: 5.0DEG
 Test Speed: HIGH
 Temperature:25.1DEG
 Operators:Wilson
 Test Date:2019-05-31

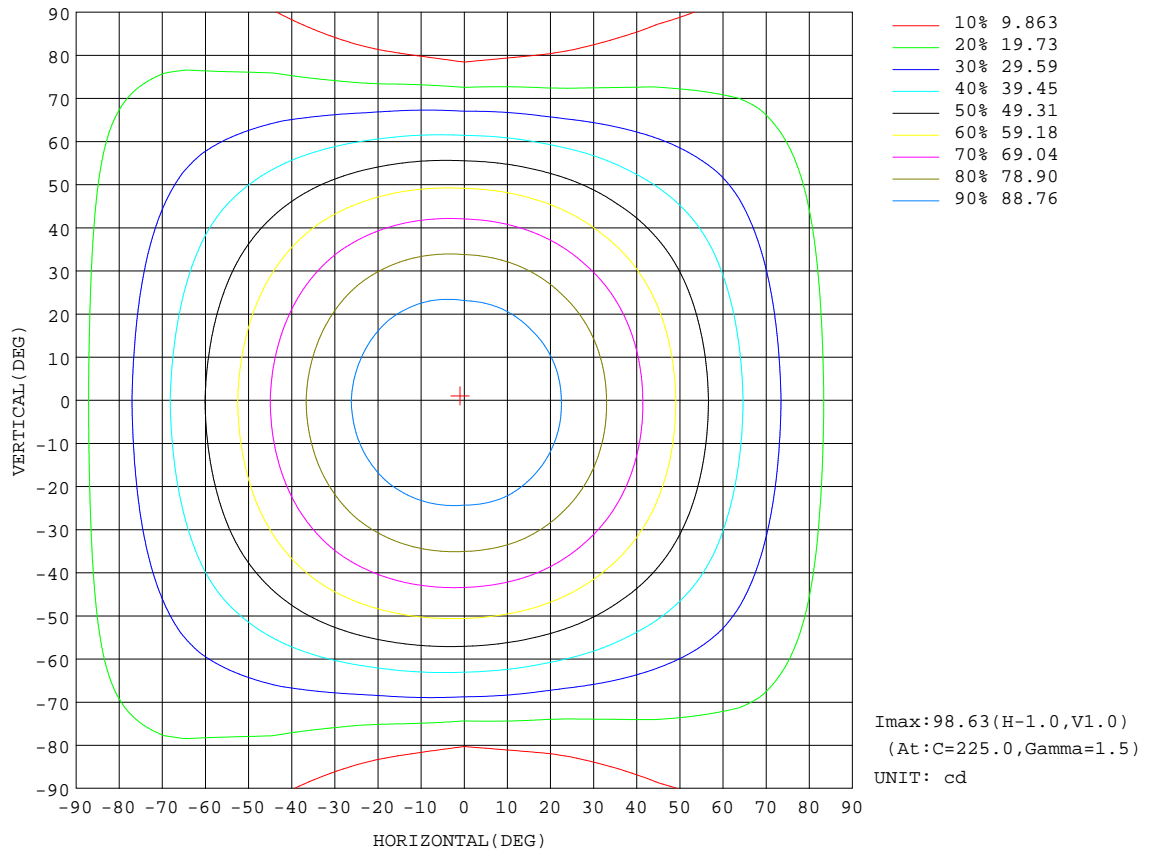
γ Range: 0 - 180DEG
 γ Interval: 0.5DEG
 Test System:EVERFINE GO-R5000_V2 SYSTEM V2.0.354
 Humidity:60.5%
 Test Distance:2.718m [K=1.0000]
 Remarks: File No.: WT-F-504-3206-01-A

Checker: Near Gao

Assessor: Akin Xu

ISOCANDELA DIAGRAM

Test:U:7.100V I:0.5123A P:3.637W PF:1.000 Freq:0Hz Lamp Flux:308.28lx1 lm		
NAME: 1	TYPE:	WEIGHT:
SPEC.:	DIM.:	SERIAL No.:
MFR.:	SUR.:	Shielding Angle:



C Range: 0 - 360DEG
 C Interval: 5.0DEG
 Test Speed: HIGH
 Temperature: 25.1DEG
 Operators: Wilson
 Test Date: 2019-05-31

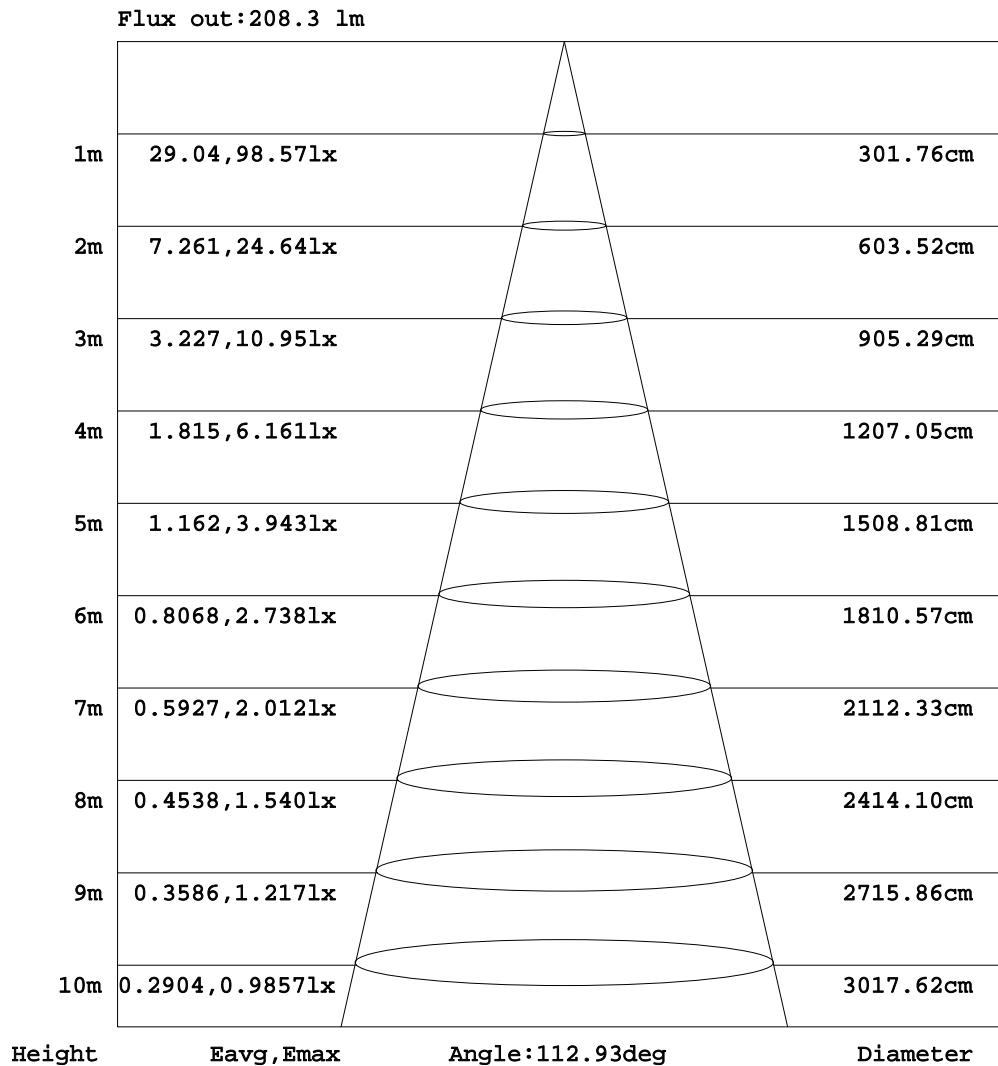
γ Range: 0 - 180DEG
 γ Interval: 0.5DEG
 Test System: EVERFINE GO-R5000_V2 SYSTEM V2.0.354
 Humidity: 60.5%
 Test Distance: 2.718m [K=1.0000]
 Remarks: File No.: WT-F-504-3206-01-A

Checker: Near Gao

Assessor: Akin Xu

AAI Figure

Test:U:7.100V I:0.5123A P:3.637W PF:1.000 Freq:0Hz Lamp Flux:308.28lx1 lm		
NAME: 1	TYPE:	WEIGHT:
SPEC.:	DIM.:	SERIAL No.:
MFR.:	SUR.:	Shielding Angle:



Note:The Curves indicate the illuminated area and the average illumination when the luminaire is at different distance.

C Range: 0 - 360DEG
 C Interval: 5.0DEG
 Test Speed: HIGH
 Temperature:25.1DEG
 Operators:Wilson
 Test Date:2019-05-31

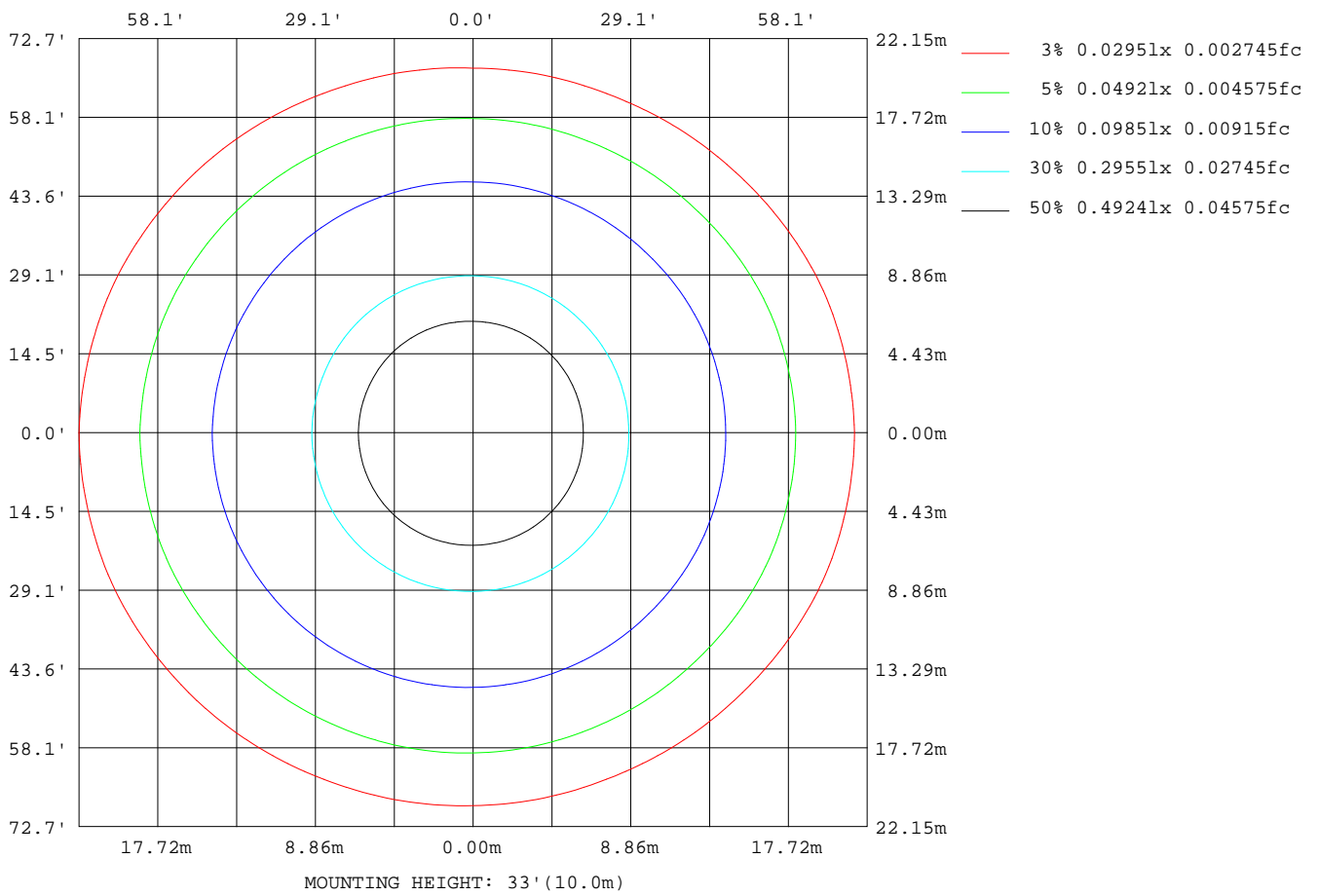
γ Range: 0 - 180DEG
 γ Interval: 0.5DEG
 Test System:EVERFINE GO-R5000_V2 SYSTEM V2.0.354
 Humidity:60.5%
 Test Distance:2.718m [K=1.0000]
 Remarks: File No.: WT-F-504-3206-01-A

Checker: Near Gao

Assessor: Akin Xu

ISOLUX DIAGRAM

Test:U:7.100V I:0.5123A P:3.637W PF:1.000 Freq:0Hz Lamp Flux:308.281x1 lm		
NAME: 1	TYPE:	WEIGHT:
SPEC.:	DIM.:	SERIAL No.:
MFR.:	SUR.:	Shielding Angle:



C Range: 0 - 360DEG
 C Interval: 5.0DEG
 Test Speed: HIGH
 Temperature:25.1DEG
 Operators:Wilson
 Test Date:2019-05-31

γ Range: 0 - 180DEG
 γ Interval: 0.5DEG
 Test System:EVERFINE GO-R5000_V2 SYSTEM V2.0.354
 Humidity:60.5%
 Test Distance:2.718m [K=1.0000]
 Remarks: File No.: WT-F-504-3206-01-A

Checker: Near Gao

Assessor: Akin Xu

LED Avg.L Report

Test:U:7.100V I:0.5123A P:3.637W PF:1.000 Freq:0Hz Lamp Flux:308.28lx1 lm		
NAME: 1	TYPE:	WEIGHT:
SPEC.:	DIM.:	SERIAL No.:
MFR.:	SUR.:	Shielding Angle:

AvgL	cd/m2
L_0~180(65)av	2357
L_0~180(75)av	2793
L_0~180(85)av	5543
L_90~270(65)av	1986
L_90~270(75)av	1593
L_90~270(85)av	746
L_45(65)av	2156
L_45(75)av	2305
L_45(85)av	3905

Standard: GB/T 29293-2012

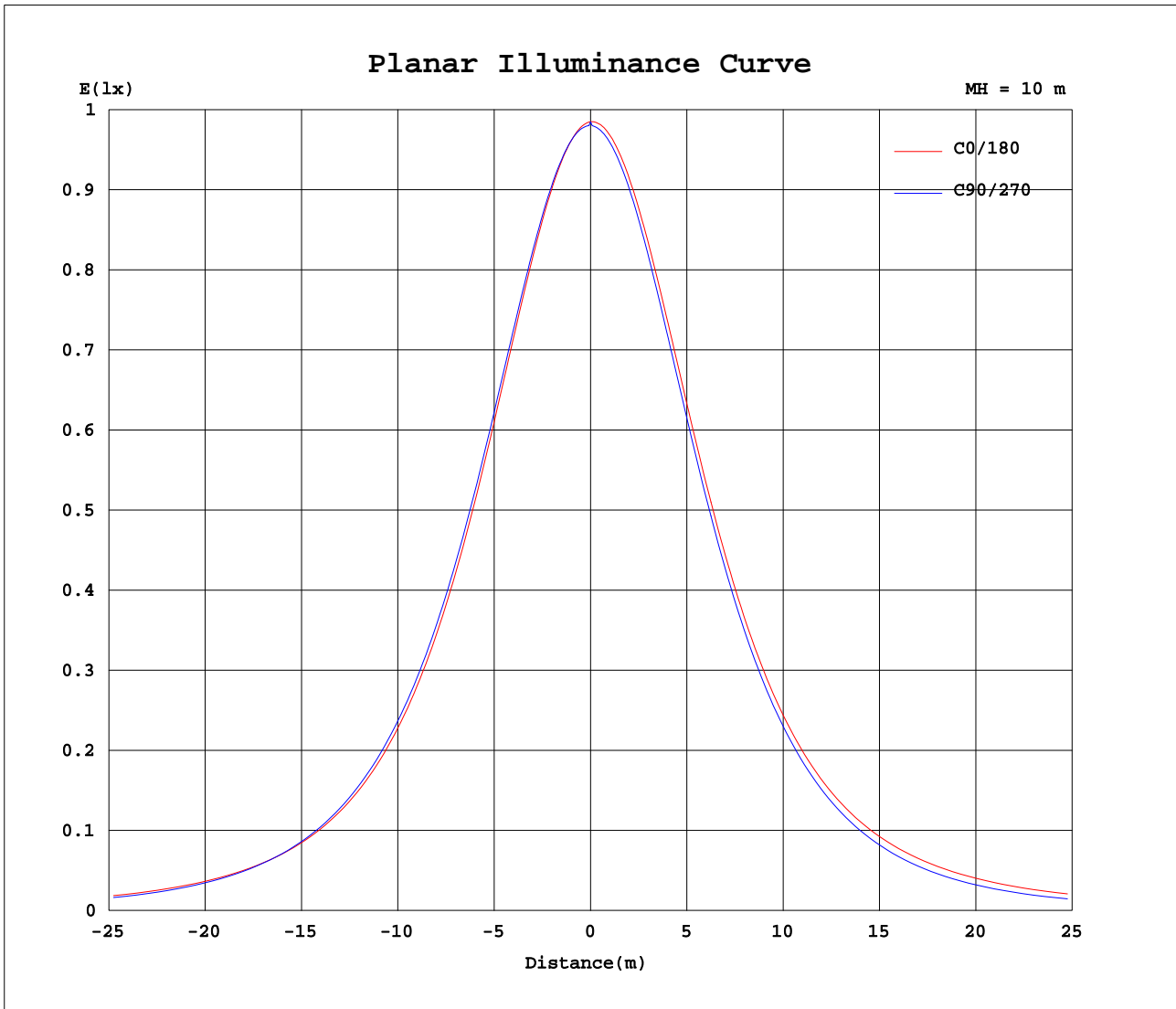
C Range: 0 - 360DEG
 C Interval: 5.0DEG
 Test Speed: HIGH
 Temperature:25.1DEG
 Operators:Wilson
 Test Date:2019-05-31

γ Range: 0 - 180DEG
 γ Interval: 0.5DEG
 Test System:EVERFINE GO-R5000_V2 SYSTEM V2.0.354
 Humidity:60.5%
 Test Distance:2.718m [K=1.0000]
 Remarks: File No.: WT-F-504-3206-01-A

Checker: Near Gao

Assessor: Akin Xu

Planar Illuminance Curve



C Range: 0 - 360DEG
 C Interval: 5.0DEG
 Test Speed: HIGH
 Temperature: 25.1DEG
 Operators: Wilson
 Test Date: 2019-05-31

γ Range: 0 - 180DEG
 γ Interval: 0.5DEG
 Test System: EVERFINE GO-R5000_V2 SYSTEM V2.0.354
 Humidity: 60.5%
 Test Distance: 2.718m [K=1.0000]
 Remarks: File No.: WT-F-504-3206-01-A

Checker: Near Gao

Assessor: Akin Xu

LUMINOUS DISTRIBUTION INTENSITY DATA

Test:U:7.100V I:0.5123A P:3.637W PF:1.000 Freq:0Hz Lamp Flux:308.281x1 lm		
NAME: 1	TYPE:	WEIGHT:
SPEC.:	DIM.:	SERIAL No.:
MFR.:	SUR.:	Shielding Angle:

Table--1

UNIT: cd

C(DEG) γ (DEG)	0	5	10	15	20	25	30	35	40	45	50	55	60	65	70	75	80	85	90
0	98.5	98.5	98.5	98.5	98.5	98.5	98.5	98.5	98.5	98.5	98.5	98.5	98.5	98.5	98.5	98.5	98.5	98.5	98.5
5	97.8	97.8	97.8	97.8	97.9	97.9	97.9	98.0	98.0	98.1	98.1	98.1	98.1	98.2	98.1	98.0	97.9	97.8	97.7
10	96.2	96.2	96.3	96.3	96.4	96.4	96.5	96.5	96.6	96.7	96.7	96.8	96.8	96.9	96.9	96.8	96.7	96.6	96.6
15	93.8	93.9	93.9	94.0	94.0	94.1	94.2	94.3	94.3	94.4	94.5	94.6	94.7	94.8	94.8	94.7	94.7	94.6	94.6
20	90.6	90.7	90.8	90.9	90.9	91.0	91.1	91.2	91.3	91.4	91.5	91.6	91.7	91.8	91.9	91.9	91.8	91.8	91.8
25	86.7	86.8	86.9	86.9	87.0	87.1	87.2	87.4	87.5	87.6	87.7	87.9	88.0	88.1	88.2	88.2	88.2	88.2	88.3
30	82.0	82.1	82.2	82.3	82.4	82.5	82.6	82.8	82.9	83.0	83.2	83.4	83.5	83.7	83.8	83.8	83.9	83.9	84.0
35	76.7	76.8	76.9	77.0	77.1	77.2	77.3	77.5	77.6	77.8	77.9	78.1	78.3	78.5	78.7	78.7	78.8	78.9	79.0
40	70.8	70.9	71.0	71.1	71.2	71.3	71.5	71.6	71.7	71.8	72.1	72.3	72.5	72.7	72.9	73.0	73.1	73.2	73.3
45	64.4	64.5	64.6	64.7	64.8	64.9	65.0	65.1	65.2	65.4	65.6	65.8	66.0	66.3	66.4	66.6	66.7	66.8	67.0
50	57.9	58.0	58.0	58.1	58.2	58.3	58.3	58.3	58.4	58.4	58.6	58.8	59.0	59.2	59.4	59.6	59.7	59.9	60.0
55	51.4	51.4	51.4	51.4	51.5	51.4	51.4	51.3	51.2	51.2	51.3	51.4	51.6	51.7	51.9	52.0	52.2	52.4	52.6
60	45.1	45.0	45.0	45.0	44.9	44.8	44.6	44.3	44.1	43.8	43.8	43.8	43.8	43.8	43.9	44.1	44.2	44.4	44.6
65	39.0	39.0	38.9	38.8	38.7	38.4	38.0	37.5	37.1	36.7	36.4	36.2	36.0	35.7	35.7	35.8	35.9	36.0	36.2
70	33.3	33.2	33.0	32.9	32.7	32.4	31.8	31.2	30.6	30.0	29.4	28.8	28.3	27.7	27.4	27.4	27.4	27.4	27.4
75	27.9	27.8	27.6	27.4	27.2	26.7	26.0	25.3	24.5	23.8	22.9	22.0	21.1	20.2	19.6	19.4	19.1	18.9	18.6
80	22.9	22.7	22.5	22.3	22.0	21.5	20.7	19.9	19.1	18.2	17.1	15.9	14.8	13.6	12.7	12.1	11.5	10.9	10.3
85	18.2	18.0	17.7	17.5	17.2	16.7	15.9	15.0	14.2	13.4	12.1	10.9	9.60	8.34	7.26	6.34	5.43	4.51	3.60
90	14.0	13.7	13.5	13.2	13.0	12.4	11.6	10.8	9.98	9.16	7.99	6.82	5.64	4.47	3.46	2.63	1.80	0.96	0.13
95	10.3	10.0	9.78	9.54	9.30	8.80	8.04	7.28	6.51	5.74	4.56	3.36	2.16	0.96	0.33	0.25	0.17	0.09	0.01
100	0.04	0.04	0.04	0.04	0.03	0.03	0.03	0.03	0.03	0.03	0.09	0.14	0.20	0.26	0.26	0.20	0.14	0.09	0.03
105	2.15	2.05	2.28	2.33	2.39	2.29	1.98	1.68	1.37	1.06	0.84	0.62	0.39	0.17	0.06	0.05	0.05	0.04	0.04
110	2.04	1.90	1.77	1.63	1.50	1.31	1.08	0.85	0.61	0.38	0.31	0.23	0.16	0.09	0.05	0.05	0.05	0.05	0.04
115	0.93	0.86	0.79	0.73	0.66	0.57	0.45	0.33	0.20	0.09	0.08	0.07	0.06	0.06	0.05	0.05	0.05	0.04	0.04
120	0.30	0.27	0.24	0.22	0.19	0.16	0.14	0.12	0.09	0.07	0.07	0.06	0.06	0.06	0.05	0.05	0.05	0.05	0.05
125	0.07	0.07	0.07	0.07	0.07	0.07	0.07	0.07	0.07	0.07	0.06	0.06	0.06	0.06	0.05	0.05	0.05	0.05	0.05
130	0.07	0.07	0.07	0.07	0.07	0.07	0.07	0.07	0.07	0.07	0.07	0.06	0.06	0.06	0.06	0.06	0.06	0.06	0.07
135	0.08	0.08	0.08	0.08	0.09	0.09	0.09	0.08	0.08	0.08	0.08	0.07	0.07	0.06	0.06	0.06	0.07	0.07	0.07
140	0.09	0.10	0.10	0.10	0.10	0.10	0.10	0.10	0.09	0.09	0.09	0.08	0.08	0.08	0.08	0.08	0.09	0.09	0.09
145	0.13	0.12	0.12	0.11	0.11	0.11	0.11	0.11	0.12	0.12	0.12	0.12	0.12	0.11	0.11	0.12	0.12	0.12	0.13
150	0.13	0.13	0.13	0.13	0.12	0.12	0.11	0.11	0.10	0.10	0.11	0.12	0.12	0.13	0.14	0.14	0.14	0.15	0.15
155	0.12	0.12	0.13	0.13	0.13	0.13	0.12	0.12	0.11	0.11	0.11	0.11	0.11	0.11	0.12	0.13	0.15	0.16	0.17
160	0.12	0.12	0.13	0.13	0.13	0.13	0.14	0.14	0.15	0.16	0.15	0.14	0.13	0.12	0.13	0.15	0.17	0.18	0.20
165	0.12	0.13	0.14	0.14	0.15	0.15	0.16	0.16	0.17	0.17	0.16	0.15	0.14	0.14	0.14	0.16	0.18	0.20	0.21
170	0.13	0.13	0.14	0.14	0.15	0.15	0.15	0.15	0.15	0.15	0.14	0.14	0.14	0.13	0.14	0.16	0.18	0.20	0.22
175	0.14	0.14	0.13	0.13	0.13	0.13	0.13	0.13	0.13	0.13	0.14	0.14	0.14	0.14	0.15	0.16	0.18	0.19	0.20
180	0.18	0.18	0.18	0.18	0.18	0.18	0.18	0.18	0.18	0.18	0.18	0.18	0.18	0.18	0.18	0.18	0.18	0.18	0.18

C Range: 0 - 360DEG
 C Interval: 5.0DEG
 Test Speed: HIGH
 Temperature:25.1DEG
 Operators:Wilson
 Test Date:2019-05-31

γ Range: 0 - 180DEG
 γ Interval: 0.5DEG
 Test System:EVERFINE GO-R5000_V2 SYSTEM V2.0.354
 Humidity:60.5%
 Test Distance:2.718m [K=1.0000]
 Remarks: File No.: WT-F-504-3206-01-A

Checker: Near Gao

Assessor: Akin Xu

LUMINOUS DISTRIBUTION INTENSITY DATA

Test:U:7.100V I:0.5123A P:3.637W PF:1.000 Freq:0Hz Lamp Flux:308.281x1 lm		
NAME: 1	TYPE:	WEIGHT:
SPEC.:	DIM.:	SERIAL No.:
MFR.:	SUR.:	Shielding Angle:

Table--2

UNIT: cd

C(DEG) γ (DEG)	95	100	105	110	115	120	125	130	135	140	145	150	155	160	165	170	175	180	185
0	98.5	98.5	98.5	98.5	98.5	98.5	98.5	98.5	98.5	98.5	98.5	98.5	98.5	98.5	98.5	98.5	98.5	98.5	98.5
5	97.8	97.8	97.9	98.0	98.0	98.0	98.1	98.1	98.1	98.2	98.2	98.3	98.3	98.3	98.3	98.3	98.4	98.4	98.4
10	96.6	96.7	96.8	96.9	97.0	97.0	97.1	97.1	97.2	97.2	97.3	97.3	97.3	97.4	97.4	97.4	97.4	97.4	97.4
15	94.7	94.8	94.9	95.0	95.1	95.2	95.2	95.3	95.4	95.4	95.5	95.5	95.6	95.6	95.6	95.6	95.6	95.7	95.6
20	91.9	92.1	92.2	92.3	92.4	92.5	92.6	92.7	92.8	92.8	92.9	92.9	93.0	93.0	93.0	93.0	93.0	93.1	93.0
25	88.4	88.5	88.7	88.8	88.9	89.1	89.2	89.3	89.4	89.4	89.5	89.5	89.6	89.6	89.6	89.7	89.7	89.7	89.6
30	84.1	84.3	84.4	84.6	84.8	84.9	85.0	85.1	85.3	85.3	85.3	85.4	85.4	85.5	85.5	85.5	85.5	85.5	85.4
35	79.1	79.3	79.5	79.7	79.8	80.0	80.1	80.3	80.4	80.4	80.5	80.5	80.6	80.6	80.6	80.6	80.6	80.6	80.5
40	73.5	73.7	73.9	74.0	74.2	74.4	74.5	74.7	74.8	74.9	74.9	75.0	75.0	75.1	75.1	75.1	75.1	75.1	75.0
45	67.2	67.4	67.6	67.8	68.0	68.2	68.3	68.5	68.7	68.7	68.8	68.9	68.9	69.0	69.0	69.0	69.0	69.0	68.8
50	60.3	60.5	60.7	60.9	61.1	61.3	61.5	61.7	61.9	62.0	62.1	62.2	62.3	62.4	62.4	62.4	62.5	62.5	62.3
55	52.8	53.1	53.3	53.5	53.8	54.0	54.3	54.6	54.8	55.0	55.2	55.3	55.5	55.6	55.7	55.8	55.8	55.9	55.7
60	44.8	45.1	45.4	45.6	46.0	46.3	46.7	47.1	47.4	47.7	48.1	48.4	48.7	48.9	49.1	49.2	49.3	49.4	49.1
65	36.5	36.8	37.1	37.5	37.9	38.5	39.0	39.6	40.1	40.6	41.2	41.7	42.2	42.5	42.7	42.9	43.0	43.2	42.9
70	27.9	28.3	28.7	29.2	29.8	30.7	31.5	32.4	33.3	33.9	34.6	35.3	36.0	36.4	36.6	36.9	37.1	37.3	36.9
75	19.3	19.9	20.6	21.2	22.1	23.3	24.5	25.7	26.9	27.7	28.5	29.3	30.2	30.7	31.0	31.2	31.5	31.8	31.3
80	11.3	12.3	13.2	14.2	15.4	16.8	18.3	19.7	21.1	22.0	22.9	23.8	24.8	25.4	25.7	25.9	26.2	26.5	26.1
85	4.83	6.07	7.30	8.53	9.90	11.4	12.9	14.4	15.9	16.9	17.9	18.8	19.8	20.4	20.7	21.1	21.4	21.7	21.2
90	1.21	2.29	3.37	4.45	5.72	7.16	8.61	10.1	11.5	12.5	13.4	14.4	15.3	15.9	16.2	16.5	16.8	17.1	16.6
95	0.12	0.24	0.36	0.48	1.29	2.87	4.43	5.99	7.54	8.47	9.38	10.3	11.2	11.8	12.1	12.4	12.7	13.0	12.6
100	0.17	0.31	0.44	0.58	0.58	0.44	0.30	0.16	0.03	0.34	0.63	0.90	1.23	1.96	3.04	4.17	5.23	6.50	5.03
105	0.07	0.09	0.12	0.15	0.35	0.74	1.12	1.51	1.89	1.51	1.12	0.75	0.37	0.17	0.12	0.07	0.09	0.03	0.16
110	0.05	0.05	0.05	0.06	0.15	0.34	0.52	0.71	0.90	1.24	1.59	1.93	2.28	2.54	2.74	2.93	3.12	3.32	3.05
115	0.04	0.05	0.05	0.05	0.08	0.15	0.21	0.28	0.34	0.57	0.80	1.03	1.26	1.43	1.54	1.65	1.76	1.88	1.72
120	0.05	0.05	0.05	0.06	0.06	0.08	0.09	0.10	0.12	0.22	0.33	0.44	0.54	0.63	0.69	0.76	0.82	0.88	0.80
125	0.06	0.06	0.06	0.06	0.06	0.07	0.07	0.07	0.08	0.10	0.13	0.16	0.19	0.22	0.24	0.27	0.30	0.33	0.29
130	0.07	0.07	0.07	0.07	0.07	0.07	0.08	0.08	0.09	0.09	0.09	0.10	0.10	0.10	0.10	0.10	0.10	0.10	0.10
135	0.07	0.07	0.07	0.07	0.08	0.08	0.09	0.10	0.10	0.10	0.11	0.11	0.11	0.11	0.10	0.10	0.10	0.10	0.10
140	0.10	0.10	0.10	0.10	0.10	0.10	0.11	0.11	0.12	0.12	0.13	0.13	0.14	0.14	0.14	0.13	0.13	0.13	0.13
145	0.13	0.13	0.13	0.14	0.14	0.14	0.14	0.14	0.14	0.14	0.15	0.16	0.16	0.17	0.16	0.16	0.16	0.15	0.16
150	0.15	0.16	0.16	0.17	0.17	0.17	0.17	0.16	0.16	0.17	0.17	0.18	0.18	0.19	0.19	0.20	0.21	0.22	0.22
155	0.18	0.18	0.19	0.19	0.19	0.19	0.19	0.19	0.20	0.20	0.21	0.21	0.22	0.23	0.23	0.24	0.24	0.25	0.24
160	0.20	0.20	0.21	0.21	0.21	0.22	0.23	0.24	0.25	0.24	0.24	0.24	0.24	0.23	0.23	0.23	0.23	0.23	0.23
165	0.22	0.23	0.24	0.25	0.26	0.25	0.25	0.25	0.24	0.25	0.25	0.25	0.26	0.26	0.26	0.25	0.25	0.25	0.25
170	0.22	0.22	0.21	0.21	0.22	0.22	0.22	0.23	0.23	0.23	0.23	0.23	0.24	0.24	0.24	0.23	0.23	0.23	0.23
175	0.20	0.20	0.20	0.20	0.20	0.20	0.20	0.19	0.19	0.19	0.19	0.19	0.19	0.19	0.19	0.20	0.20	0.20	0.20
180	0.18	0.18	0.18	0.18	0.18	0.18	0.18	0.18	0.18	0.18	0.18	0.18	0.18	0.18	0.18	0.18	0.18	0.18	0.18

C Range: 0 - 360DEG
 C Interval: 5.0DEG
 Test Speed: HIGH
 Temperature:25.1DEG
 Operators:Wilson
 Test Date:2019-05-31

γ Range: 0 - 180DEG
 γ Interval: 0.5DEG
 Test System:EVERFINE GO-R5000_V2 SYSTEM V2.0.354
 Humidity:60.5%
 Test Distance:2.718m [K=1.0000]
 Remarks: File No.: WT-F-504-3206-01-A

Checker: Near Gao

Assessor: Akin Xu

LUMINOUS DISTRIBUTION INTENSITY DATA

Test:U:7.100V I:0.5123A P:3.637W PF:1.000 Freq:0Hz Lamp Flux:308.281x1 lm		
NAME: 1	TYPE:	WEIGHT:
SPEC.:	DIM.:	SERIAL No.:
MFR.:	SUR.:	Shielding Angle:

Table--3

UNIT: cd

C(DEG) γ (DEG)	190	195	200	205	210	215	220	225	230	235	240	245	250	255	260	265	270	275	280
0	98.5	98.5	98.5	98.5	98.5	98.5	98.5	98.5	98.5	98.5	98.5	98.5	98.5	98.5	98.5	98.5	98.5	98.5	98.5
5	98.3	98.3	98.3	98.3	98.3	98.4	98.4	98.4	98.3	98.3	98.3	98.2	98.1	98.0	97.8	97.7	97.5	97.5	97.6
10	97.4	97.3	97.3	97.3	97.3	97.3	97.3	97.3	97.2	97.1	97.1	97.0	96.9	96.7	96.5	96.3	96.2	96.2	96.2
15	95.6	95.5	95.5	95.4	95.4	95.4	95.3	95.3	95.2	95.1	95.0	94.9	94.8	94.6	94.4	94.2	94.0	94.0	94.0
20	92.9	92.9	92.8	92.7	92.7	92.6	92.6	92.6	92.4	92.3	92.2	92.1	91.9	91.7	91.4	91.2	91.0	91.0	90.9
25	89.5	89.4	89.3	89.3	89.2	89.1	89.1	89.0	88.9	88.7	88.6	88.4	88.2	88.0	87.7	87.5	87.3	87.2	87.1
30	85.3	85.2	85.1	85.0	84.9	84.9	84.8	84.7	84.5	84.3	84.2	84.0	83.8	83.5	83.3	83.0	82.7	82.7	82.6
35	80.4	80.3	80.2	80.1	80.0	79.9	79.8	79.7	79.5	79.3	79.0	78.8	78.6	78.3	78.1	77.8	77.5	77.4	77.3
40	74.8	74.7	74.5	74.4	74.3	74.2	74.0	73.9	73.7	73.5	73.2	73.0	72.8	72.5	72.2	71.9	71.6	71.5	71.4
45	68.7	68.5	68.3	68.2	68.0	67.9	67.7	67.6	67.3	67.0	66.8	66.5	66.2	66.0	65.7	65.4	65.1	64.9	64.8
50	62.1	61.9	61.7	61.5	61.3	61.1	60.9	60.6	60.3	60.0	59.7	59.4	59.1	58.8	58.5	58.2	57.9	57.7	57.6
55	55.4	55.1	54.9	54.6	54.3	54.0	53.7	53.3	53.0	52.6	52.2	51.8	51.5	51.1	50.8	50.5	50.1	50.0	49.9
60	48.8	48.5	48.2	47.8	47.3	46.8	46.3	45.8	45.3	44.8	44.3	43.8	43.4	43.0	42.6	42.2	41.9	41.8	41.7
65	42.5	42.1	41.7	41.2	40.5	39.9	39.2	38.5	37.8	37.0	36.3	35.6	35.0	34.5	34.1	33.6	33.2	33.2	33.2
70	36.5	36.1	35.7	35.0	34.2	33.3	32.5	31.6	30.6	29.5	28.4	27.4	26.5	26.0	25.4	24.8	24.3	24.4	24.6
75	30.9	30.4	30.0	29.2	28.3	27.3	26.3	25.3	23.9	22.5	21.2	19.8	18.7	17.9	17.1	16.3	15.4	15.9	16.4
80	25.6	25.1	24.7	23.9	22.8	21.8	20.7	19.6	18.0	16.5	14.9	13.3	11.9	10.8	9.71	8.60	7.49	8.34	9.18
85	20.7	20.3	19.8	19.0	17.9	16.8	15.7	14.6	13.0	11.3	9.73	8.12	6.70	5.47	4.24	3.01	1.77	2.82	3.86
90	16.2	15.8	15.3	14.6	13.5	12.4	11.4	10.3	8.83	7.36	5.90	4.43	3.29	2.47	1.65	0.84	0.02	0.69	1.36
95	12.1	11.7	11.3	10.6	9.62	8.62	7.63	6.62	5.23	3.84	2.45	1.03	0.32	0.24	0.16	0.09	0.01	0.11	0.18
100	3.77	2.44	1.16	0.43	0.31	0.23	0.14	0.03	0.09	0.15	0.21	0.27	0.27	0.21	0.15	0.09	0.03	0.06	0.09
105	0.21	0.33	0.45	0.60	0.84	1.07	1.31	1.54	1.22	0.90	0.57	0.24	0.08	0.06	0.05	0.04	0.03	0.04	0.04
110	2.79	2.52	2.26	1.96	1.64	1.32	0.99	0.67	0.53	0.39	0.25	0.11	0.04	0.04	0.04	0.04	0.04	0.04	0.04
115	1.57	1.41	1.25	1.07	0.86	0.65	0.44	0.24	0.19	0.15	0.11	0.07	0.05	0.04	0.04	0.04	0.04	0.04	0.05
120	0.72	0.64	0.56	0.47	0.38	0.28	0.19	0.10	0.08	0.07	0.07	0.06	0.05	0.05	0.05	0.05	0.05	0.05	0.05
125	0.26	0.22	0.18	0.16	0.14	0.12	0.10	0.08	0.08	0.07	0.07	0.06	0.06	0.06	0.06	0.06	0.06	0.06	0.06
130	0.10	0.11	0.11	0.11	0.10	0.10	0.09	0.09	0.08	0.08	0.07	0.07	0.07	0.07	0.07	0.07	0.07	0.07	0.06
135	0.10	0.10	0.10	0.10	0.10	0.10	0.10	0.09	0.09	0.09	0.08	0.08	0.08	0.08	0.07	0.07	0.07	0.07	0.07
140	0.13	0.13	0.13	0.13	0.12	0.12	0.12	0.11	0.11	0.11	0.10	0.10	0.10	0.09	0.09	0.09	0.09	0.09	0.08
145	0.17	0.17	0.18	0.18	0.17	0.16	0.15	0.14	0.13	0.13	0.13	0.13	0.12	0.12	0.12	0.11	0.11	0.11	0.10
150	0.22	0.22	0.22	0.21	0.20	0.19	0.17	0.16	0.16	0.16	0.16	0.16	0.16	0.15	0.14	0.13	0.12	0.13	0.13
155	0.24	0.23	0.23	0.22	0.22	0.22	0.21	0.21	0.21	0.21	0.21	0.21	0.19	0.17	0.15	0.13	0.11	0.12	0.13
160	0.24	0.24	0.25	0.25	0.25	0.25	0.25	0.25	0.24	0.24	0.23	0.23	0.22	0.19	0.17	0.15	0.12	0.13	0.13
165	0.25	0.25	0.25	0.25	0.24	0.24	0.24	0.24	0.24	0.24	0.23	0.23	0.22	0.20	0.17	0.15	0.13	0.13	0.13
170	0.23	0.23	0.23	0.23	0.23	0.22	0.22	0.22	0.22	0.22	0.22	0.21	0.21	0.19	0.17	0.16	0.14	0.14	0.14
175	0.20	0.20	0.20	0.20	0.20	0.20	0.19	0.19	0.19	0.19	0.19	0.19	0.19	0.18	0.17	0.16	0.14	0.15	0.15
180	0.18	0.18	0.18	0.18	0.18	0.18	0.18	0.18	0.18	0.18	0.18	0.18	0.18	0.18	0.18	0.18	0.18	0.18	0.18

C Range: 0 - 360DEG
 C Interval: 5.0DEG
 Test Speed: HIGH
 Temperature:25.1DEG
 Operators:Wilson
 Test Date:2019-05-31

γ Range: 0 - 180DEG
 γ Interval: 0.5DEG
 Test System:EVERFINE GO-R5000_V2 SYSTEM V2.0.354
 Humidity:60.5%
 Test Distance:2.718m [K=1.0000]
 Remarks: File No.: WT-F-504-3206-01-A

Checker: Near Gao

Assessor: Akin Xu

LUMINOUS DISTRIBUTION INTENSITY DATA

Test:U:7.100V I:0.5123A P:3.637W PF:1.000 Freq:0Hz Lamp Flux:308.281x1 lm		
NAME: 1	TYPE:	WEIGHT:
SPEC.:	DIM.:	SERIAL No.:
MFR.:	SUR.:	Shielding Angle:

Table--4

UNIT: cd

C(DEG) γ (DEG)	285	290	295	300	305	310	315	320	325	330	335	340	345	350	355				
0	98.5	98.5	98.5	98.5	98.5	98.5	98.5	98.5	98.5	98.5	98.5	98.5	98.5	98.5	98.5				
5	97.6	97.6	97.6	97.6	97.6	97.6	97.6	97.6	97.6	97.7	97.7	97.7	97.7	97.7	97.8				
10	96.2	96.2	96.2	96.1	96.1	96.1	96.0	96.1	96.1	96.1	96.1	96.2	96.2	96.2	96.2				
15	93.9	93.9	93.9	93.8	93.8	93.7	93.7	93.7	93.7	93.7	93.8	93.8	93.8	93.8	93.8				
20	90.9	90.9	90.8	90.7	90.7	90.6	90.5	90.5	90.6	90.6	90.6	90.6	90.6	90.6	90.6				
25	87.1	87.0	87.0	86.9	86.8	86.7	86.6	86.6	86.6	86.6	86.6	86.6	86.7	86.7	86.7				
30	82.5	82.5	82.4	82.3	82.1	82.0	81.9	81.9	81.9	81.9	82.0	82.0	82.0	82.0	82.0				
35	77.2	77.2	77.0	76.9	76.8	76.7	76.6	76.6	76.6	76.6	76.6	76.6	76.6	76.6	76.6				
40	71.3	71.2	71.0	70.9	70.8	70.7	70.5	70.6	70.6	70.6	70.6	70.7	70.7	70.7	70.7				
45	64.7	64.5	64.4	64.3	64.2	64.1	63.9	64.0	64.1	64.1	64.2	64.2	64.3	64.3	64.4				
50	57.5	57.4	57.2	57.2	57.1	57.0	56.9	57.0	57.2	57.3	57.5	57.6	57.6	57.7	57.8				
55	49.8	49.6	49.6	49.6	49.6	49.6	49.6	49.8	50.1	50.4	50.6	50.8	51.0	51.1	51.2				
60	41.6	41.5	41.6	41.7	41.9	42.1	42.3	42.7	43.1	43.6	44.0	44.3	44.5	44.7	44.9				
65	33.2	33.2	33.4	33.9	34.3	34.7	35.2	35.8	36.4	37.0	37.7	38.1	38.3	38.6	38.8				
70	24.8	25.0	25.5	26.2	27.0	27.8	28.6	29.4	30.1	30.9	31.7	32.2	32.5	32.8	33.0				
75	16.9	17.4	18.2	19.3	20.4	21.5	22.6	23.4	24.3	25.2	26.1	26.7	27.0	27.3	27.6				
80	10.0	10.9	11.9	13.2	14.6	15.8	17.1	18.1	19.0	20.0	20.9	21.6	21.9	22.2	22.6				
85	4.89	5.93	7.11	8.44	9.76	11.1	12.4	13.3	14.3	15.2	16.2	16.8	17.2	17.5	17.9				
90	2.04	2.71	3.64	4.82	6.00	7.18	8.36	9.26	10.2	11.1	12.0	12.6	12.9	13.3	13.6				
95	0.25	0.32	0.43	0.59	0.64	0.56	0.73	2.68	4.40	6.13	7.95	9.00	9.32	9.63	9.95				
100	0.12	0.15	0.34	0.68	0.91	1.33	1.68	1.21	0.91	0.57	0.21	0.03	0.04	0.04	0.04				
105	0.05	0.05	0.16	0.36	0.56	0.76	0.97	1.31	1.66	2.00	2.35	2.47	2.37	2.29	2.09				
110	0.04	0.04	0.07	0.13	0.20	0.26	0.32	0.55	0.79	1.02	1.25	1.44	1.59	1.74	1.89				
115	0.05	0.05	0.05	0.06	0.06	0.07	0.08	0.19	0.30	0.42	0.53	0.62	0.70	0.78	0.85				
120	0.05	0.05	0.05	0.06	0.06	0.07	0.07	0.09	0.11	0.13	0.15	0.17	0.21	0.24	0.27				
125	0.06	0.05	0.06	0.06	0.06	0.06	0.06	0.07	0.07	0.08	0.08	0.08	0.08	0.08	0.08				
130	0.06	0.06	0.06	0.06	0.06	0.07	0.07	0.07	0.07	0.08	0.08	0.08	0.08	0.08	0.07	0.07			
135	0.07	0.07	0.07	0.07	0.08	0.08	0.08	0.08	0.08	0.08	0.08	0.08	0.08	0.08	0.08				
140	0.08	0.08	0.08	0.09	0.09	0.09	0.09	0.09	0.10	0.10	0.10	0.10	0.10	0.10	0.10				
145	0.10	0.10	0.10	0.10	0.10	0.10	0.10	0.10	0.11	0.11	0.11	0.11	0.12	0.12	0.12				
150	0.13	0.13	0.12	0.12	0.11	0.11	0.10	0.11	0.11	0.11	0.12	0.12	0.12	0.13	0.13				
155	0.13	0.14	0.14	0.14	0.13	0.13	0.12	0.12	0.12	0.12	0.12	0.12	0.12	0.12	0.12				
160	0.14	0.14	0.14	0.14	0.14	0.14	0.13	0.13	0.13	0.13	0.13	0.13	0.13	0.12	0.12				
165	0.14	0.14	0.14	0.14	0.14	0.14	0.14	0.14	0.13	0.13	0.13	0.12	0.12	0.13	0.13				
170	0.14	0.14	0.14	0.14	0.14	0.14	0.14	0.14	0.13	0.13	0.13	0.13	0.13	0.13	0.13				
175	0.15	0.15	0.15	0.15	0.14	0.14	0.14	0.14	0.14	0.14	0.14	0.14	0.14	0.14	0.14				
180	0.18	0.18	0.18	0.18	0.18	0.18	0.18	0.18	0.18	0.18	0.18	0.18	0.18	0.18	0.18				

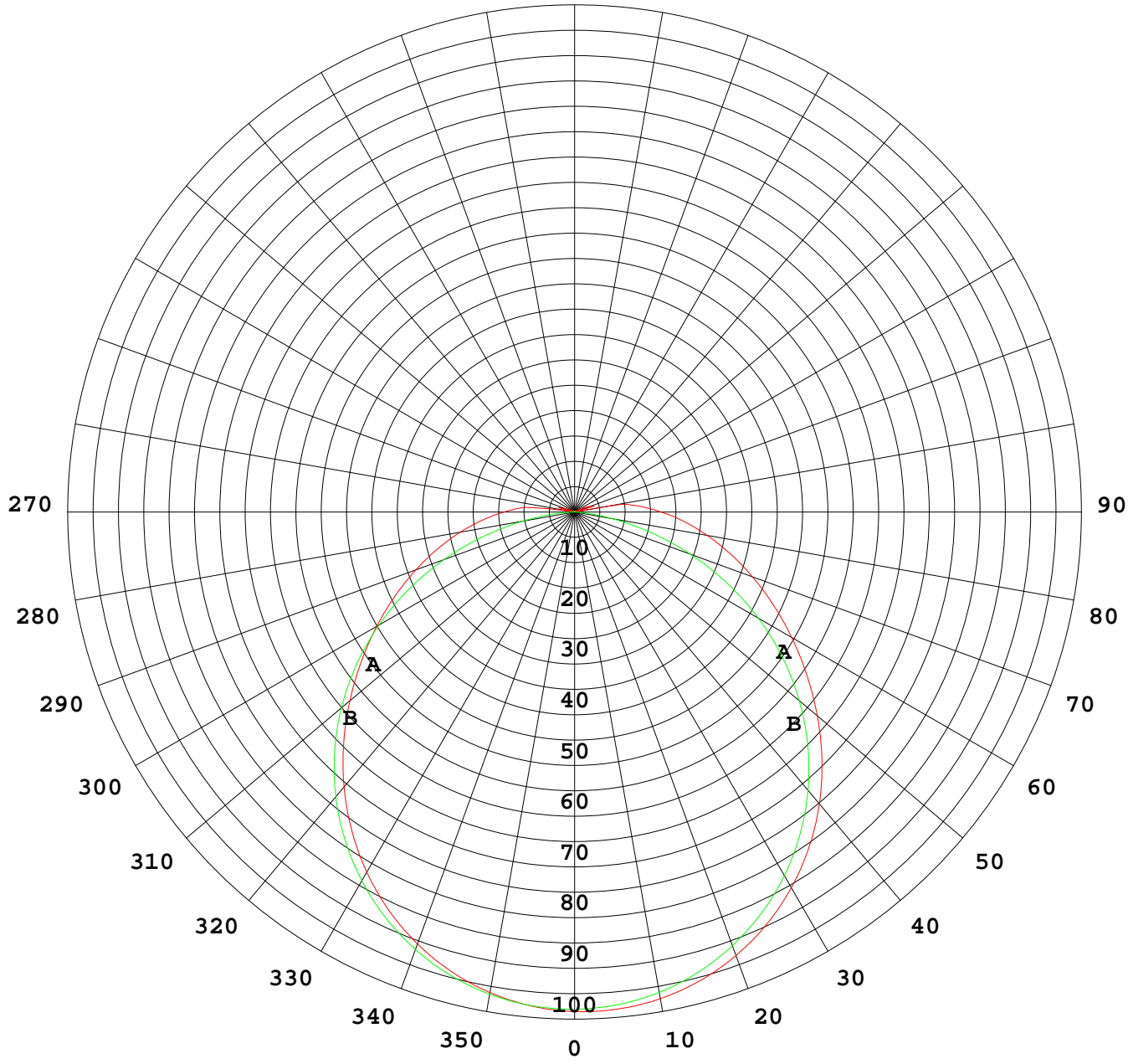
C Range: 0 - 360DEG
 C Interval: 5.0DEG
 Test Speed: HIGH
 Temperature:25.1DEG
 Operators:Wilson
 Test Date:2019-05-31

γ Range: 0 - 180DEG
 γ Interval: 0.5DEG
 Test System:EVERFINE GO-R5000_V2 SYSTEM V2.0.354
 Humidity:60.5%
 Test Distance:2.718m [K=1.0000]
 Remarks: File No.: WT-F-504-3206-01-A

Checker: Near Gao

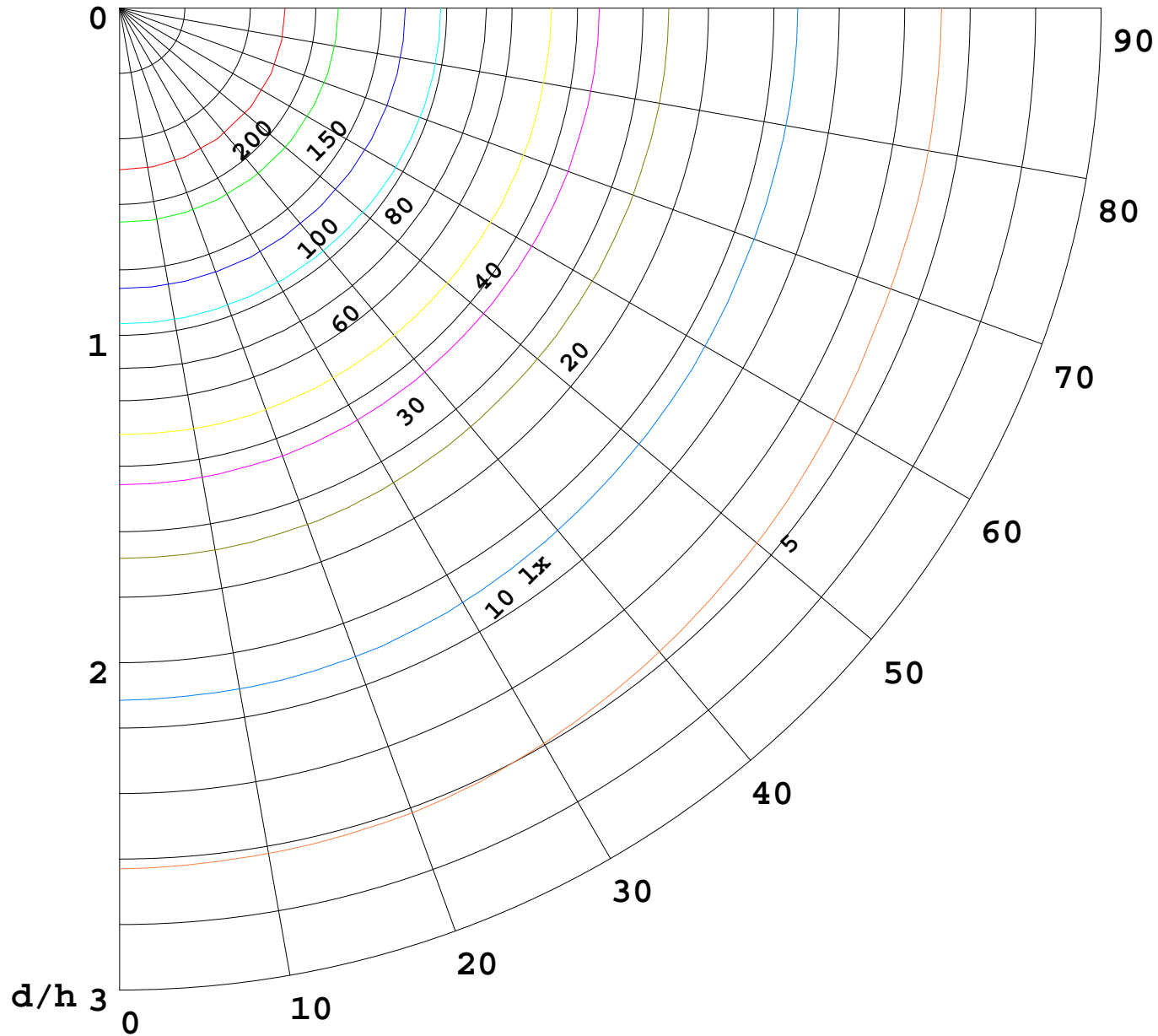
Assessor: Akin Xu

I (cd)



1000 lm

$K = 1$



F = 1000 lm
K = 0.7
Hcc = 0.8 m
Hfc = 0.0 m
Eave = 100 lx

	Pcc	Pw	Pfc
—————	70	50	30
—————	50	30	20

